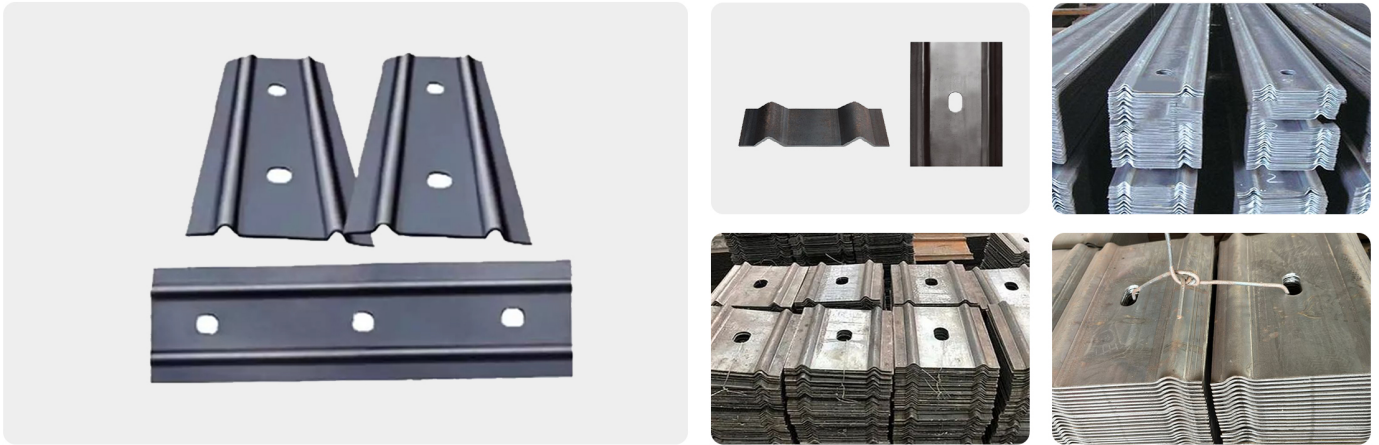


Steel belt

Steel belt ▶▶

XST 鑫昇泰
XINSHENGTAI



Product Information

Mining W steel belt is a kind of support equipment used in mining engineering and underground engineering, mainly used to reinforce and support underground structures to prevent accidents such as rock collapse and ground collapse. It is usually made of high-strength steel belt and has the characteristics of strong bearing capacity, corrosion resistance and easy installation.

Product Introduction

Mining W steel belt is widely used in coal mining engineering, tunnel engineering, basement engineering and other fields. It is an important underground engineering support equipment and plays an important role in reinforcing and supporting underground structures.

Product Introduction-Features

1. High strength: Mining W steel belt is made of high-strength steel, with high tensile strength and impact resistance, and can withstand the weight and external force of underground structures.
2. Corrosion resistance: Since the underground environment is often humid and easily corroded by chemical substances, mining W steel belt is usually made of anti-corrosion treatment or stainless steel material, which has good corrosion resistance.
3. Stable structure: The design structure of mining W steel belt is stable, which can effectively reinforce and support underground structures and ensure their stable operation.
4. Easy installation: Mining W steel belt is easy to install, usually fixed in the underground structure by bolts or welding, without complex tools and equipment.
5. Economical and practical: Mining W steel belt is an economical and practical underground engineering support equipment, which can improve work efficiency and reduce maintenance costs.