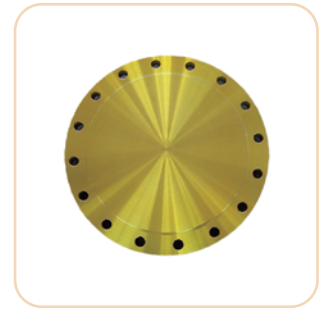
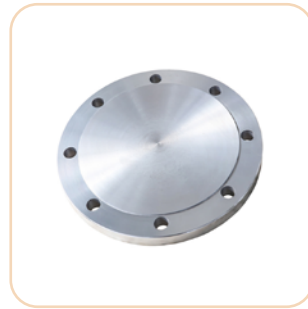
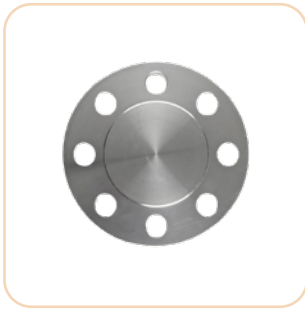


## Blind Plate



### Describe

A blind flange is a solid flange used to seal ports or openings in pipelines, preventing leakage during installation, maintenance, or testing. It is bolted to flange joints to close openings securely and is widely used in industries like petroleum, natural gas, chemicals, and power.

### Product Features

- Strong sealing: The blind flange provides extremely high sealing through the tight connection with the pipe flange, effectively preventing the leakage of fluid, gas or other media.
- Hole-free design: The blind flange does not have any through holes, completely closes the opening of the pipe, and is suitable for the end of the pipe that does not require flowing media.
- High strength: Made of high-strength materials, the blind flange has good pressure resistance and high temperature and corrosion resistance, and is suitable for harsh working environments.
- Easy installation: It is connected to the flange by bolts, which is simple to install and disassemble, and is convenient for long-term use and maintenance.
- Strong adaptability: The blind flange is suitable for pipeline systems of various specifications, and can be customized in different materials and sizes according to customer needs.

### Technical parameters

Material	Carbon steel, stainless steel, alloy steel, cast steel, etc.
Specification	DN15 ~ DN1200 (1/2" ~ 48")
Pressure level	PN6 ~ PN250
standard	Comply with international standards such as GB, ANSI, DIN, JIS, etc.
Surface treatment	Spraying, galvanizing, phosphating, etc.
Connection	Bolted connections
Temperature range	-50°C ~ 450°C
Pipe wall thickness	Suitable for different pipe wall thicknesses, can be customized according to customer requirements

- Packaging: According to the size and quantity of blind flanges, wooden boxes, pallets, bubble films and other packaging methods are usually used to ensure that the products are intact during transportation.