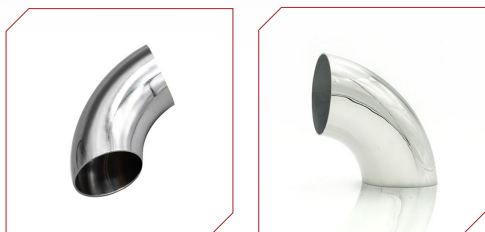


Elbow



*Feel free to contact us with your requirements,
and we will provide you with a detailed quote. -----*

Elbow is a pipe fitting used in piping systems, mainly used to change the direction of the pipe. It is usually installed on the pipe by welding, threaded connection or flange connection. It is used to adjust the direction of the pipe. Common angles are 45° , 90° , 180° , and special angles can be customized (such as 60° , 120°).