

358防攀爬护栏

Anti Climb 358 Fence Panel

Fence & Metal Mesh

Specifications

specification of 358 anti climb fence					
Mesh	Wire Diameter	Panel Width	Panel height	Post Type	
76.2x12.7mm 75.0x12.5mm 75.0x25mm 75.0x50mm	Horizontal Wire: 3.2,3.5,4mm Vertical Wire: 4mm	1m-3m popular: 2.2m/2.5m/3m	1m-6m popular: 2.5m/3m	Square Post(SHS) 60x60x2.0/2.5/3.0mm 80x80x2.0/2.5/3.0mm	Rectangular Post(RHS) 40x60x2.0/2.5/3.0mm 40x80x2.0/2.5/3.0mm 60x80x2.0/2.5/3.0mm
Surface Treatment: hot dipped galvanized , galvanized +powder coated,					
V-top:including angle iron, barbed wire,razor barbed wire					
Connecting Methods:iron bar , hexagonal clamp , screws					
Color:RAL 6005 green, RAL 7016 gray, All RAL color can be customized.					
Product specifications can be customized according to your needs					

A
03

Scene Picture



Email:mark@fencemenu.com

Tel:+86-15127859990

Website:www.fencemenu.com

Anping County Qunli silk screen Manufacturing co.,Ltd

Anping Huantai Metal Products Co.,Ltd.

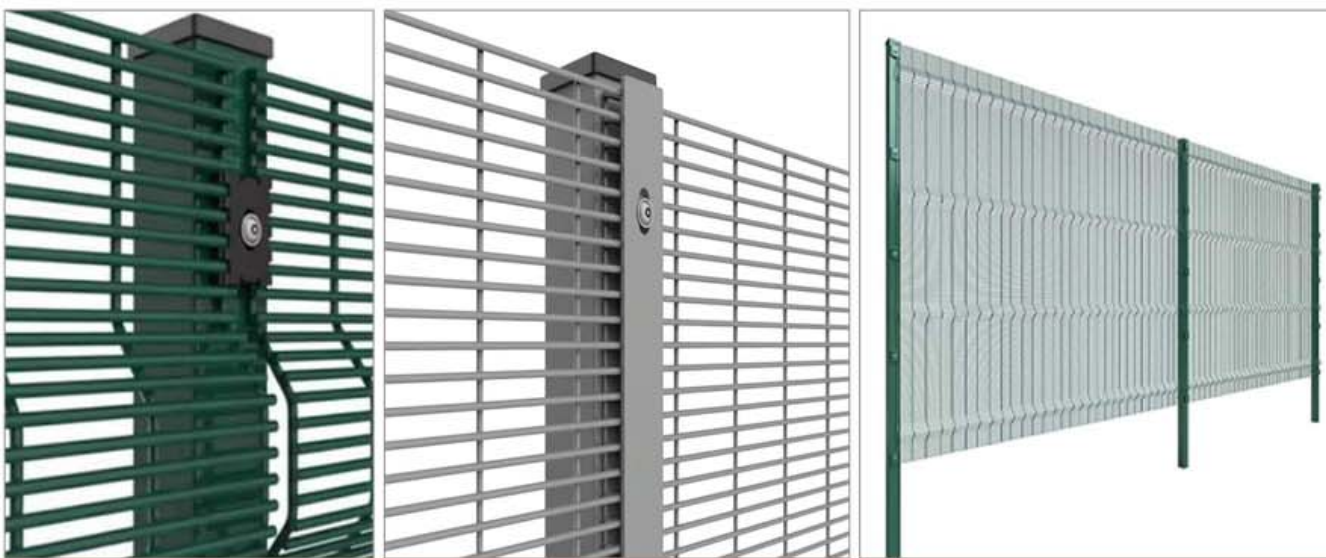
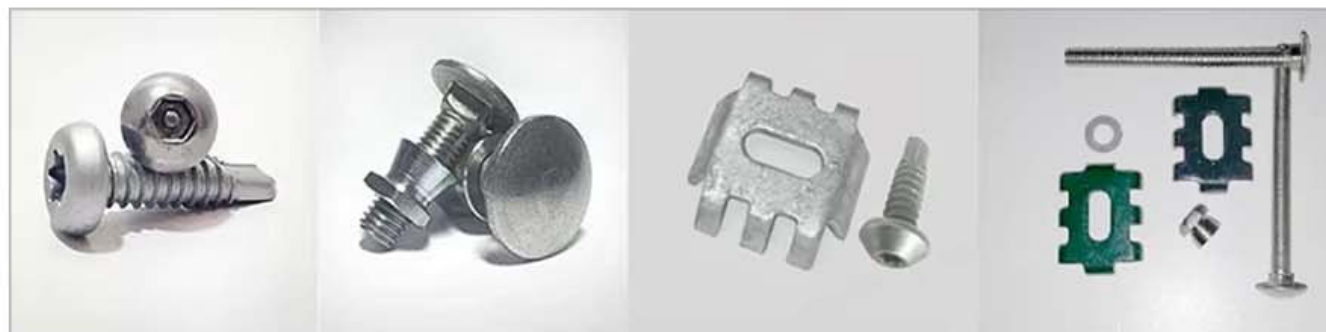
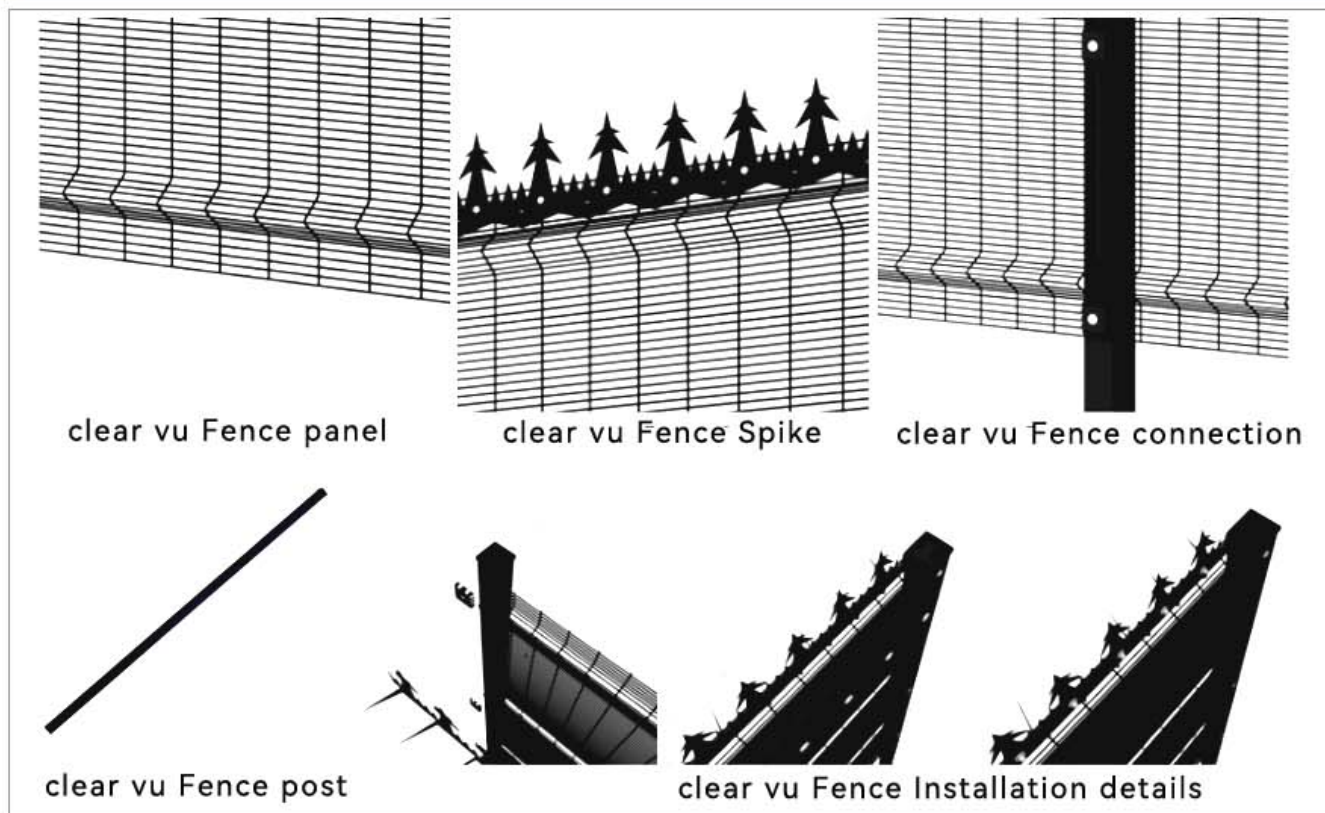
358防攀爬护栏

Anti Climb 358 Fence Panel

Detail drawing

Fence & Metal Mesh

A
04



Email: mark@fencemenu.com

Tel: +86-15127859990

Website: www.fencemenu.com

Anping County Qunli silk screen Manufacturing co.,Ltd

Anping Huantai Metal Products Co.,Ltd.