

WANCHI®

**DEDICATED TO BECOMING A
LEADER IN THE CONSTRUCTION
INDUSTRY.**

MAIL
info@cn-wanchi.com

PHONE / WECHAT
+8615028903273

WHATSAPP
+8615612929416

WEBSITE
www.cn-wanchi.com

ADDRESS
No. 255, Jiajiazhuang Village,
Xingjiawan Town,
Renze District, Xingtai City, Hebei Province

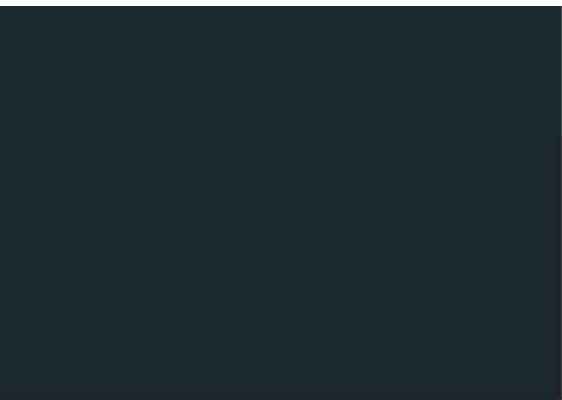


WANCHI®

**HEBEI WANCHI MACHINERY
MANUFACTURING CO., LTD.**

**DEVELOPMENT THROUGH
TECHNOLOGICAL RESEARCH**





01

COMPANY PROFILE

P1

03

APPLICATIONS

P4

02

PRODUCTION

P3

04

COOPERATION

P5-P6

CONTENTS

05

PRODUCTS

P7



COMPANY PROFILE

20^{YEARS}

DEVELOPMENT HISTORY

165⁺

PARTNERS

120

SERVING CITIES AND REGIONS

(2005-2024)

DEVELOPMENT THROUGH TECHNOLOGICAL RESEARCH

Hebei Wanchi Machinery Manufacturing Co., Ltd. founded in 2005, located in Xingtai City, Renze District, Xingjiawan Town, Hebei Province, China. The company focuses on specialized equipment manufacturing and is committed to providing high-quality construction machinery, food machinery, woodworking machinery, machine tools, environmental protection equipment, mining machinery, and material handling equipment. With years of industry experience, Hebei Wanchi has developed into a comprehensive enterprise integrating design, production, sales, and service.

Since its establishment, Hebei Wanchi Machinery Manufacturing Co., Ltd. with rich industry experience and strong technical strength, we have gradually developed into a leader in the mechanical manufacturing field. The company continues to innovate and improve to adapt to market changes, gradually forming a complete product chain and service system.



CORPORATE SPIRIT

Integrity, authenticity, cooperation, win-win



CORPORATE VISION

Dedicated to becoming a leader in the construction industry.



TALENT VIEW

Discover talent, make full use of talent, train talent, and build a learning team

COMPANY PROFILE

• PRODUCTION EQUIPMENT AND WORKSHOPS

The company covers a vast area and is equipped with modern production facilities and standardized workshops. This includes production lines for steel pipe rust removal and painting integrated machines, concrete pumps, and construction lift vehicles. The company is equipped with advanced production equipment and processes to ensure product quality and production efficiency. The workshops are fully functional, including welding, painting, assembly, and testing workshops, achieving comprehensive control and transparent management of the production process.

• PROFESSIONAL TEAM

Hebei Wanchi boasts a high-quality team, including design engineers, technical R&D personnel, quality inspectors, and international trade experts. Our team is dedicated to product innovation and technological advancement, having obtained numerous invention patents and been recognized as a high-tech enterprise. The professional skills and collaborative spirit of the team are the solid foundation for the company's continuous development.

• PRODUCT RANGE

Hebei Wanchi's main products include steel pipe rust removal and painting integrated machines, concrete pumps, and construction lift vehicles. These products are widely used in construction, engineering maintenance, and infrastructure development. The company has earned customer trust and praise with high-quality and efficient products and services.

• MARKET COVERAGE

The company's products have a broad domestic market coverage, selling well in multiple provinces, municipalities, and autonomous regions, and actively expanding into international markets. Hebei Wanchi's products are also exported to Asia, Southeast Asia, Africa, North America, and other regions, establishing extensive international partnerships.

• VISION

Hebei Wanchi Machinery Manufacturing Co., Ltd. We are committed to becoming a leading global enterprise in the machinery manufacturing field. We will continue to uphold the principle of 'Quality First, Innovation as Core,' driving technological innovation and product upgrades to provide excellent solutions for our customers. We are dedicated to sustainable development and social responsibility, contributing to a better future.

PRODUCTION



APPLICATIONS



CONSTRUCTION

CONCRETE DELIVERY PUMP

High delivery efficiency, reduces labor costs.

CONSTRUCTION ELEVATOR

Safe and stable, improves construction efficiency.

PIPE RUST REMOVAL AND PAINTING MACHINE

Used for surface treatment of equipment and pipes to prevent corrosion.



METALLURGY AND MINING

PIPE RUST REMOVAL AND PAINTING MACHINE

Efficient rust removal and corrosion prevention, extends equipment lifespan.

CONSTRUCTION ELEVATOR

Strong stability, adapts to harsh environments, enhances work safety.



URBAN INFRASTRUCTURE MAINTENANCE

PIPE RUST REMOVAL AND PAINTING MACHINE

Effective corrosion prevention, extends facility lifespan.

CONSTRUCTION ELEVATOR

Flexible and safe, convenient for maintenance operations.



INDUSTRIAL MANUFACTURING

PIPE RUST REMOVAL AND PAINTING MACHINE

Improves product surface quality, enhances protection

CONSTRUCTION ELEVATOR

Flexible and efficient, adapts to various industrial environments, ensures high-altitude work safety.

COOPERATION

OUR SERVICE COMMITMENT

QUALITY ASSURANCE

Through comprehensive testing and quality control, we ensure that each product meets high standards. Our stringent quality management system guarantees the quality and stability of our products.

FLEXIBLE SUPPLY

We provide flexible supply strategies to meet different customer needs, ensuring timely delivery. We have the ability to quickly respond to market changes and offer timely supply services to our clients.

INNOVATIVE R&D

We continuously engage in technological innovation and R&D to provide clients with more advanced and efficient machinery and equipment. We invest in R&D to ensure our company remains at the forefront of technology.

COOPERATION

AFTER-SALES SERVICE



MULTILINGUAL ONLINE TECHNICAL SUPPORT



CUSTOMIZED ONLINE TRAINING SERVICES



INTERNATIONAL LOGISTICS AND SPARE PARTS SERVICES



REGULAR CUSTOMER SATISFACTION SURVEYS



REQUIREMENT CONFIRMATION



PROVIDING CUSTOMIZED SOLUTIONS



TECHNICAL COMMUNICATION AND CONFIRMATION



PRODUCTION MANUFACTURING



CONTRACT SIGNING



QUALITY INSPECTION AND ACCEPTANCE



PACKAGING AND SHIPPING



TECHNICAL COMMUNICATION AND CONFIRMATION

COOPERATION PROCESS

PRODUCTS CONTENTS



CONSTRUCTION COMPANY LIFT TRUCK

01 CROSS MOBILE LIFT



P11

02 ARTICULATED BOOM TRUCK



P13

03 MASONRY HYDRAULIC LIFTING PLATFORM (TIRE-TYPE WALKING)



P17

04 MASONRY HYDRAULIC LIFTING PLATFORM (CRAWLER TYPE)



P19

05 SINGLE COLUMN ALUMINUM ALLOY LIFT ELECTRIC AERIAL ENGINEERING WORK LADDER



P21

06 DOUBLE COLUMN ALUMINUM ALLOY LIFT ELECTRIC AERIAL ENGINEERING WORK LADDER



P22

07 SELF-PROPELLED AERIAL PICK-UP MACHINE



P23



INTELLIGENT THREADING MACHINE

01 FULLY AUTOMATIC CNC THREADING MACHINE



P25



CONSTRUCTION COMPANY LIFT TRUCK

01 CROSS MOBILE LIFT



P27



CONCRETE PUMP

01 FINE STONE SECONDARY STRUCTURAL COLUMN PUMP



P26

02 TYPE 20 FINE STONE CONCRETE PUMP



P27

03 TYPE 25 LARGE PARTICLE DELIVERY PUMP



P29

04 TYPE 30 FINE STONE CONCRETE PUMP



P31

05 TYPE 40 FINE STONE CONCRETE PUMP



P33

06 50 TYPE LARGE AGGREGATE CONCRETE PUMP



P35

07 TYPE 60 CONCRETE PUMP



P36

08 DIESEL ENGINE CONCRETE PUMP



P37

09 DIESEL ENGINE CONCRETE PUMP



P39

10 MICRO LARGE PARTICLE CONVEYING PUMP



P41

CONTENTS



FORKLIFT

01 TRUCK MOUNTED FORKLIFT



P45

02 ELECTRIC STACKER



P46

03 THREE-WHEEL FORKLIFT



P48

04 ENGINEERING TRANSPORT VEHICLE



P49

05 ELECTRIC LOADER



P50

06 ELECTRIC PALLET TRUCK



P51

07 ELECTRIC FORKLIFTV



P53

08 ELECTRIC FORKLIFTV



P54

WANCHI®

MAIL
info@cn-wanchi.com

PHONE/WECHAT
+8615028903273

WHATSAPP
+8615612929416

WEBSITE
www.cn-wanchi.com

CROSS MOBILE LIFT



PRODUCT SPECIFICATIONS

Fully self-propelled 6-meter electric drive (steel track) configuration list, fully self-propelled 8-meter electric drive (steel track), fully self-propelled 10-meter electric drive (steel track) configuration list, fully self-propelled 12-meter electric drive (steel track) configuration list, fully self-propelled 14-meter electric drive + one-button leveling + (steel track) configuration list, fully self-propelled 14-meter configuration list, fully self-propelled small 4-meter configuration list, fully self-propelled small 6-meter configuration list, fully self-propelled narrow 0810 configuration list

If you don't understand, please call us.: 1528903273



MATERIAL

Safety guardrail	35mm*35mm square tube
mesa	Anti-slip pattern plate
Support rod	Material: Q345
Base	Q235 steel plate welding
Lifting cylinder	1 piece
Outrigger Cylinder	4 sticks
Power battery	Tianneng
Hydraulic oil	32/46
Electronic control system	HBL
Motor Controller	Trinity
Track chassis	Steel tracks
Motor pump	Guo Rui
Valve Group	Fubo Norma
Surface treatment	Shot blasting, rust removal, plastic spraying

CROSS MOBILE LIFT

PRODUCT CONFIGURATION

Proportional control	Braking system	Oil pipe explosion-proof system	Extended platform
Troubleshooting	Emergency descent	Safety maintenance support	Charging protection system
Emergency stop switch	One-click leveling	Tilt protection system	Folding guardrail
buzzer	trumpet	ECU (three in one)	PCU (nine-button button)

BASIC PARAMETERS OF THE PRODUCT

BASIC PARAMETERS	UNIT	MPZXLD-0608
Safe working load	Kg	320
Extended platform safe working load	Kg	113
Maximum working height	m	8.8
Maximum platform height	m	6
Machine length	mm	2780
Machine width	mm	1570
Overall height (guardrails not folded)	mm	2350
Overall height (guardrail folded)	mm	1780
Working platform size	mm	2270X1130
Platform extension size	mm	900
Minimum ground clearance (folded state)	mm	0
Minimum ground clearance (lifting state)	mm	0
Minimum turning radius	mm	0
Lifting motor	V/Kw	48V/4.5KW
Travel motor	V/Kw	48V/4KW
Equipment travel speed (folded state)	Km/h	1.8
Equipment travel speed (lifting state)	Km/h	0
Ascent/descent speed	sec	80/35
Battery	V/Ah	8x12v/240Ah
charger	V/A	48/30
Maximum climbing ability	%	25
Maximum allowable working angle	°	1.5-3
Machine weight	Kg	2770

ARTICULATED BOOM TRUCK



1, [MAIN PERFORMANCE ADVANTAGES]

Large-scale cross-obstacle operation

360-degree rotation operation

Adopt 48v combined battery pack to provide longer endurance

Full-proportional distributed control, more flexible operation, adaptable to a variety of complex operating environments

Battery/diesel engine dual power options to meet insufficient use environments

Industry-leading turning drive technology, smaller turning radius, flexible maneuverability

Advanced two-wheel/four-wheel drive technology, strong power, high climbing ability

2. MAIN STRUCTURAL ANALYSIS

CHASSIS PART

① Two-wheel drive ② Two-wheel steering ③ Solid rubber tires

④ DC drive motor, equipped with fast and slow speed adjustment to meet the driving speed requirements under different working conditions

⑤ With automatic parking function, parking and parking to ensure operation safety

BOOM PART

① Five-arm combination: 3-section folding arm + telescopic arm + small flying arm

② High-strength boom material, high strength and strong safety

③ Each arm can be controlled independently, simple and convenient to operate

ROTATING PART

① 360-degree rotation to meet multi-directional operation requirements

② High-efficiency and precise slewing support mechanism, more sensitive and stable rotation

WORKBENCH

① Customizable super-large workbench to meet the needs of multiple people

② Standard load 230kg, maximum load capacity can reach 500kg

③ The workbench is equipped with automatic leveling function

HYDRAULIC SYSTEM

① Advanced hydraulic wiring and pipeline technology, low failure rate, easy maintenance

② Equipped with manual emergency power unit to ensure emergency use under power shortage conditions

③ Multi-way hydraulic valve design, clear division of labor, no mutual influence, rapid response

④ Adopt brand anti-wear hydraulic oil to ensure stable operation

ELECTRICAL SYSTEM

① The electrical system is equipped with an operating sound and light alarm device to ensure the safety of the operating range.

② PLC microcomputer control technology, smarter and more accurate

③ Equipped with equipment status display, convenient for viewing the current operating status of the equipment

④ The equipment has a fault self-detection function, and the cause of the fault can be viewed through the display

ARTICULATED BOOM TRUCK

3. MAIN TECHNICAL PARAMETERS

SERIAL NUMBER	DIMENSIONS	
1	Machine length (folded)	5.2m
2	Machine width (folded)	1.65m
3	Overall height (folded)	2.35m
4	Workbench size	1.6*0.8m
5	Number of working arms	5 sections
6	Folding Travel Speed	4km/h
7	Lifting speed	0.8km/h
8	Upper arm swing	≤0.5%
9	Forearm Luffing Angle	130°
10	Minimum turning radius	Outer wheel 4.4m Inner wheel 2.25m
11	Height of workbench from ground after retraction	620mm
12	Wheelbase	1907mm
13	Wheelbase	1440mm
14	Equipment weight	4900kg
15	Control voltage	24v
16	Tire specifications	28X9-15 solid tire
17	Tire size	580mm
18	Device Color	yellow

ARTICULATED BOOM TRUCK

MAIN PERFORMANCE PARAMETERS

19	Maximum operating height	10m
20	Maximum platform height	8m
21	Maximum operating radius	5.3m
22	Maximum span height	5.1m
23	Maximum allowable angle of chassis	1.5°/3°
24	Drive type	4x2x2
25	Maximum climbing grade	25%
26	Workbench load	230kg
27	Maximum load capacity	2 people
28	Workbench rotation angle (optional)	±80° (after installation, the length of the whole machine increases by 200)
29	Wind resistance level	Level 3-4

DRIVE PARAMETERS - DIESEL

30	Turntable rotation angle	360° continuous
31	Power form	Cloud Engine
32	Maximum output power	37kw
33	Starting battery	12v/60A
34	Number of batteries	2 pieces
35	Number of engine cylinders	4 cylinders
36	Engine Type	Non-road environmentally friendly engines
37	Emission standards	Country 2
38	Fuel Type	0# Diesel
39	Hydraulic oil type	46# anti-wear hydraulic oil
40	Engine oil tank capacity	40L
41	Hydraulic oil tank capacity	120L

(Due to product upgrades and technology updates, the above parameters have changed, please refer to actual production)

ARTICULATED BOOM TRUCK

4. REFERENCE PICTURES



The self-propelled articulated boom lift work platform can perform overhang operations, cross certain obstacles, or lift in one place for multi-point operations; it can rotate 360 degrees, has a large platform load capacity, and can accommodate two or more people working at the same time and can carry certain equipment; the equipment has good mobility and is easy to transfer to another location; it has a beautiful appearance and is suitable for large-scale operations such as stations, docks, shopping malls, stadiums, residential properties, factories and mines.

If you have any questions, please call: 1528903273

5. PRODUCT SPECIFICATIONS

Technical parameters of the self-propelled articulated boom 8m diesel lifting work platform, technical parameters of the self-propelled articulated boom 10m diesel lifting work platform, technical parameters of the self-propelled articulated boom 12m diesel lifting work platform,

Technical parameters of the self-propelled articulated boom 14m diesel lifting work platform, technical parameters of the self-propelled articulated boom 8m diesel lifting work platform, technical parameters of the self-propelled articulated boom 16m diesel lifting work platform,

Technical parameters of the self-propelled articulated boom 18m diesel lifting work platform, technical parameters of the self-propelled articulated boom 20m diesel lifting work platform



MASONRY HYDRAULIC LIFTING PLATFORM (TIRE-TYPE WALKING)



Product name: Hydraulic masonry lifting platform Masonry plastering lifting platform Hydraulic lifting platform Mobile masonry lifting platform....

Product use scenarios: construction site Airport Factory Factory area Decoration industry Rental industry Warehouse....

Product accessories: Tire (located at the bottom of the machine walking wheel) Bar part (located on both sides of the keyhole at the front of the machine) Chain (located on the inside of the machine door frame) Cylinder (retractable hydraulic rod located in the center of the door frame)

Remote control (the machine is equipped with two, wireless remote control, wired remote control located on the bottom side of the machine)

If you don't understand, please call us.: 1528903273



MASONRY HYDRAULIC LIFTING PLATFORM (TIRE-TYPE WALKING)

	4M PLATFORM	6M PLATFORM	8M PLATFORM	8M PLATFORM
Platform size	4*1.35*1.85	4*1.35*2.9	4*1.35*2.9	4*1.75*3.4
Platform load	1 ton	1 ton	1 ton	1 ton
Machine weight	1.15 tons	1.35 tons	1.5 tons	1.6 tons
Lifting motor brand	Huasheng	Huasheng	Huasheng	Huasheng
Lifting motor voltage	220v	220v	220v	220v
Lifting motor power	2.2KW	2.2KW	2.2KW	2.2KW
Travel motor brand	Yuhui			
Travel motor power	1200w/48v	1200w/48v	1200w/48v	1200w/48v
Hydraulic cylinder brand	Ludwig			
Battery Brand	Super Power	Super Power	Super Power	Super Power
Battery Specifications	48v20ah	48v20ah	48v20ah	48v20ah
Chassis steel grade	Q235/12 channel steel/10*10 square tube			
Lifting gantry steel grade	Q355/10C type 5.0 thick		Q355/10C type 8.0 thick	
Overall transport dimensions	2.5*1.1*1.86	2.5*1.1*2.9	2.5*1.2*2.9	2.5*1.3*3.4



MASONRY HYDRAULIC LIFTING PLATFORM (CRAWLER TYPE)



Product name: Hydraulic masonry lifting platform Masonry plastering lifting platform Hydraulic lifting platform Mobile masonry lifting platform....

Product use scenarios: construction site Airport Factory Factory area Decoration industry Rental industry Warehouse....

Product accessories: Tire (located at the bottom of the machine walking wheel) Bar part (located on both sides of the keyhole at the front of the machine) Chain (located on the inside of the machine door frame) Cylinder (retractable hydraulic rod located in the center of the door frame)

Remote control (the machine is equipped with two, wireless remote control, wired remote control located on the bottom side of the machine)

If you don't understand, please call us.: 1528903273



MASONRY HYDRAULIC LIFTING PLATFORM (CRAWLER TYPE)

	4M PLATFORM	6M PLATFORM	8M PLATFORM	8M PLATFORM
Platform size	4*1.35*1.85	4*1.35*2.9	4*1.35*2.9	4*1.75*3.4
Platform load	1 ton	1 ton	1 ton	1 ton
Machine weight	1.3 tons	1.55 tons	1.75 tons	2 tons
Lifting motor brand	Huasheng	Huasheng	Huasheng	Huasheng
Lifting motor voltage	220v	220v	220v	220v
Lifting motor power	2.2KW	2.2KW	2.2KW	2.2KW
Travel motor brand	Yuhui			
Travel motor power	1500w/48v*2	1500w/48v*2	1500w/48v*2	1500w/48v*2
Hydraulic cylinder brand	Ludwig			
Battery Brand	Super Power	Super Power	Super Power	Super Power
Battery Specifications	48v32ah*2	48v32ah*2	48v32ah*2	48v32ah*2
Chassis steel grade	Q235/12 channel steel/10*10 square tube			
Lifting gantry steel grade	Q355/10C type 5.0 thick		Q355/10C type 8.0 thick	
Overall transport dimensions	2.5*1.1*1.86	2.5*1.1*2.9	2.5*1.2*2.9	2.5*1.3*3.4



SINGLE COLUMN ALUMINUM ALLOY LIFT ELECTRIC AERIAL ENGINEERING WORK LADDER



MODEL SPECIFICATIONS	LOAD 150KG 4M SINGLE COLUMN	LOAD 150KG 6M SINGLE COLUMN	LOAD 130KG 8M SINGLE COLUMN	LOAD 130KG 10M SINGLE COLUMN
Table size	650*650MM	650*650MM	650*650MM	650*650MM
Rated load	150KG	150KG	130KG	130KG
Maximum height	4.0M	6.0M	8.0M	10M
Dimensions	1420*780*1970MM	1420*780*1970MM	1420*780*1970MM	1420*780*1970MM
Vehicle weight	340KG	360KG	380KG	420KG



DOUBLE COLUMN ALUMINUM ALLOY LIFT ELECTRIC AERIAL ENGINEERING WORK LADDER



MODEL SPECIFICATIONS	300KG LOAD, 6M DOUBLE COLUMN	300KG LOAD 8M DOUBLE COLUMN	250KG LOAD 10M DOUBLE COLUMN
Table size	1200*630MM	1200*630MM	1200*630MM
Rated load	300KG	300KG	250KG
Maximum height	6.0M	8.0M	10.0M
Dimensions	1553*850*2000MM	1553*850*2000MM	1848*850*2000MM
Vehicle weight	510KG	550KG	690KG

SELF-PROPELLED AERIAL PICK-UP MACHINE



Model Specifications	FSEP3-2.7	FSEP3-3.3	FSEP3-4.0
Maximum platform height (H) mm	2700	3300	4000
Maximum machine height (H1) mm	4020	4900	5310
Distance from base to ground (H2) mm	40	40	40
Platform rated load kg	300	300	300
Working platform size mm	600x700	600x700	600x700
Maximum driving speed (platform lowered)	4	4	4
Maximum driving speed (platform angry)	1.6	1.6	1.6
Minimum turning radius mm	1600	15-20	15-20
Maximum climbing ability %	15-20	3300	4000
Driving wheel size mm	230x80	4900	5310
Universal wheel size mm	150X40	40	40
Drive motor v/kw	2x24/0.4	300	300
Lifting motor v/kw	2x12/1.6	600x700	600x700
Maintenance-free battery v/Ah	2X12/100	4	4
Charger v/A	24/15	1.6	1.6
Machine length (A) mm	1530	1600	1600
Machine width (B) mm	760	760	760
Overall height (C) mm	1830	2130	1840
Machine weight kg	430	450	660

FULLY AUTOMATIC CNC THREADING MACHINE



Basic parameters of the product:	
Basic parameters	
Power supply mode	Three-phase AC 380V 50HZ
Rated power	8.6KW
Spindle speed High	medium and low gear 126/87/48 rpm
Equipment weight	870KG
Maximum working hydraulic pressure	12MPA
Equipment model	4-inch-4-inch
Equipment dimensions	1.8x0.6x1.1M



STEEL PIPE RUST REMOVAL AND PAINTING MACHINE



PRODUCT ADVANTAGES

- 1 This machine adopts mechanical transmission, flat pressing and rotating two-way straightening. Reasonable structure, stable performance, easy operation.
- 2 Multifunctional integration (straightening, descaling, rust removal, painting) random combination to meet diversified needs, saving time and efficiency.
- 3 Product functions: dust removal, straightening, rust removal, painting.

In the past	10th Anniversary of the International Monetary Fund	Scope of application	Steel pipe with diameter 45-51cm
Walking speed	18m/min	Straightening the bend	60°
Straightening effect	≤3°	Motor power	5.5kw+4kw+4kw
Voltage	380v	weight	1500kg
Dimensions	3300*960*1200mm	Product Features	Straightening, painting, rust removal

In the past	10th Anniversary of the International Monetary Fund	Scope of application	Steel pipe with diameter 45-51cm
Walking speed	18m/min	Straightening the bend	90°
Straightening effect	≤3°	Motor power	5.5kw+3kw+3kw
Voltage	380v	weight	1200kg
Dimensions	3000*960*1200mm	Product Features	Straightening, painting, rust removal

FINE STONE SECONDARY STRUCTURAL COLUMN PUMP



PRODUCT RELATED ACCESSORIES:



MODEL	UNIT	SPECIFICATION
Motor power	Kw	15
power supply	V	380
Dimensions	mm	1750*700*1200
weight	Kg	600
Vertical Height	m	20-30
Horizontal conveying distance	m	40-50
Transport capacity	h	5 ¹ -6 ³
Maximum particle diameter	cm	≤1.5
Discharge port diameter	mm	80
Cylinder stroke	mm	350
Cylinder diameter	mm	120
Delivery pipe diameter	mm	80

This product is used in high-rise building mortar and fine stone concrete transportation, secondary structural column grouting, various pressure grouting in reservoirs, hydropower stations, ports, docks, foundation treatment, soft foundation, reinforcement grouting, tunnel, subway, mine construction backfill grouting anchor support. This product adopts hydraulic slurry delivery, vibration net filtration and double cylinder reciprocating operation, which can fully transport various mortars, fine stone concrete, etc. in construction applications. This product has the characteristics of large displacement, high pressure, labor and material saving, flexible movement, etc. It is an ideal mortar transportation equipment.

TYPE 20 FINE STONE CONCRETE PUMP



MODEL	UNIT	SPECIFICATION
Motor power	Kw	30
power supply	V	380
Dimensions	mm	4000*1500*1500
weight	Kg	1500
Vertical Height	m	100
Horizontal conveying distance	m	180
Transport capacity	h	5 ³ -7 ³
Maximum particle diameter	cm	≤1.5
Discharge port diameter	mm	125-64
Cylinder stroke	mm	1000
Cylinder diameter	mm	140
Delivery pipe diameter	mm	64

TYPE 20 FINE STONE CONCRETE PUMP

- 1. The advanced S-tube valve reversing is adopted to meet the transportation of fine stone concrete;
- 2. The eyeglass plate and cutting ring are made of high-hardness wear-resistant alloy materials with longer service life;
- 3. The imported main oil pump has high outlet pressure and can meet the transportation requirements of high-rise buildings and long-distance construction;
- 4. The hydraulic oil cooling adopts an air cooling system with good cooling effect and easy use;
- 5. It has a reverse pump function to minimize pipeline blockage when the concrete collapse is not good;
- 6. It is equipped with a centralized lubrication system, and the lubricating oil is distributed to various parts to ensure the service life of the rotating parts;
- 7. The electrical box adopts Mitsubishi electrical components and is equipped with a wireless remote control handle, which is stable and easy to operate.

THE FOLLOWING ARE PRODUCT-RELATED ACCESSORIES:



TYPE 25 LARGE PARTICLE DELIVERY PUMP



MODEL	UNIT	SPECIFICATION
Motor power	Kw	30
power supply	V	380
Dimensions	mm	3500*1600*1600
weight	Kg	1200
Vertical Height	m	70
Horizontal conveying distance	m	150
Transport capacity	h	15³
Maximum particle diameter	cm	≤3
Discharge port diameter	mm	125
Cylinder stroke	mm	750
Cylinder diameter	mm	140
Delivery pipe diameter	mm	80-125

TYPE 25 LARGE PARTICLE DELIVERY PUMP

1. Mixing, pumping and transportation are three-in-one, and the transfer is convenient and fast.
2. High construction efficiency; on-site mixing and continuous pumping, compared with traditional mixer mixing and manual feeding, the efficiency is more than 5 times higher.
3. Save labor and reduce use costs. The mixing and pumping process is operated by one person, with a high degree of automation. Compared with mixer mixing, manual feeding can save 4-5 manpower, and the labor intensity is greatly reduced.
4. Small footprint, easy to move, very suitable for rural and narrow area construction.
5. The quality of the produced concrete is good. After two mixing and pipeline transportation, the concrete is more uniform, has good density, high strength, and better anti-seepage and anti-bending properties.

THE FOLLOWING ARE PRODUCT-RELATED ACCESSORIES:



TYPE 30 FINE STONE CONCRETE PUMP



MODEL	UNIT	SPECIFICATION
Motor power	Kw	37
power supply	V	380
Dimensions	mm	3800*1600*1600
weight	Kg	1600
Vertical Height	m	80
Horizontal conveying distance	m	200
Transport capacity	h	18-22
Maximum particle diameter	cm	≤2
Discharge port diameter	mm	140
Cylinder stroke	mm	1000
Cylinder diameter	mm	140
Delivery pipe diameter	mm	80-100

TYPE 30 FINE STONE CONCRETE PUMP

1. HYDRAULIC SYSTEM:

The application of the new electronic control reversing technology makes the pumping work more reliable and the failure rate of the hydraulic system is lower; the special valve of the hydraulic control system is configured, the large flow rate is low energy consumption and the impact is small, which prolongs the service life.

2. POWER SYSTEM:

The motor fine stone pump adopts Siemens motor, a well-known domestic and foreign brand, and the diesel engine fine stone pump adopts Tianjin Lovol and Yuchai brands with low energy consumption and high efficiency.

3. MAIN OIL PUMP:

The imported Kawasaki main oil pump is adopted. The main oil pump adopts electronic control displacement and the pumping speed is adjustable. It has a long life, strong and powerful work, and can work continuously for 24 hours. It adopts a joint venture brand constant power variable piston pump. The constant power control effectively prevents the motor and diesel engine from overloading, and can withstand higher pressure and load than conventional gear pumps.

4. COOLING SYSTEM:

The air-cooled or water-cooled dual cooling system can ensure the stable operation of the equipment under harsh climatic conditions such as high temperature and severe cold.

5. ELECTRONIC CONTROL SYSTEM:

The main electrical appliances adopt the Japanese Mitsubishi PLC control system, equipped with a wireless remote control, stable operation and easy operation.

THE FOLLOWING ARE PRODUCT-RELATED ACCESSORIES:



TYPE 40 FINE STONE CONCRETE PUMP



MODEL	UNIT	SPECIFICATION
Motor power	Kw	45
power supply	V	380
Dimensions	mm	4200*1700*1700
weight	Kg	2500
Vertical Height	m	150-180
Horizontal conveying distance	m	300
Transport capacity	h	30³-35³
Maximum particle diameter	cm	≤2
Discharge port diameter	mm	150
Cylinder stroke	mm	1180
Cylinder diameter	mm	160-180
Delivery pipe diameter	mm	80-125

TYPE 40 FINE STONE CONCRETE PUMP

The 40-type fine stone concrete delivery pump is a fine stone concrete delivery equipment specially developed for the characteristics of floor heating construction. It is suitable for large-area, high-efficiency construction of fine stone concrete filling layer or mortar filling in floor heating projects. It can be used for the delivery of fine stone concrete pumps or mortar in construction projects, tunnels, mines and other projects. After adding spray accessories, it can also be used as a spraying pump for spraying and throwing concrete, mortar, refractory materials and greening soil.

WANCHI

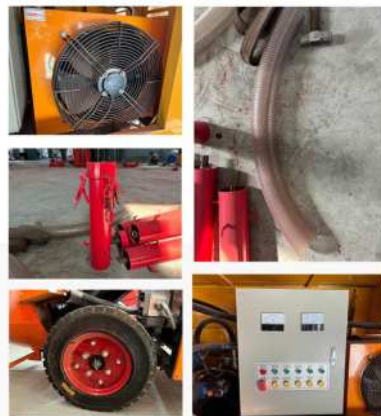
THE FOLLOWING ARE PRODUCT-RELATED ACCESSORIES:



50 TYPE LARGE AGGREGATE CONCRETE PUMP



PRODUCT RELATED ACCESSORIES:



MODEL	UNIT	SPECIFICATION
Motor power	Kw	55
power supply	V	380
Dimensions	mm	4500*1800*1700
weight	Kg	3200
Vertical Height	m	180
Horizontal conveying distance	m	500
Transport capacity	h	30 ³ -40 ³
Maximum particle diameter	cm	≤4
Discharge port diameter	mm	180
Cylinder stroke	mm	1200
Cylinder diameter	mm	200
Delivery pipe diameter	mm	80-125

TYPE 60 CONCRETE PUMP



PRODUCT RELATED ACCESSORIES:



MODEL	UNIT	SPECIFICATION
Motor power	Kw	90
Maximum pressure	Mpa	38
weight	Kg	4000
Vertical Height	m	220
Horizontal conveying distance	m	700
Transport capacity	h	40-60
Maximum particle diameter	cm	5
Discharge port diameter	mm	180
Cylinder stroke	mm	1600
Cylinder diameter	mm	200
Delivery pipe diameter	mm	100-125

DIESEL ENGINE CONCRETE PUMP



MODEL	UNIT	SPECIFICATION
Motor power	Kw	30-85
power supply	V	Diesel Power
Dimensions	mm	25
weight	Kg	2000-5000
Vertical Height	m	30-150
Horizontal conveying distance	m	70-300
Transport capacity	h	15 ³ -60 ³
Maximum particle diameter	cm	≤1-4
Discharge port diameter	mm	100-150
Cylinder stroke	mm	650-1500
Cylinder diameter	mm	140-200
Delivery pipe diameter	mm	100-150

DIESEL ENGINE CONCRETE PUMP

1. MAIN OIL PUMP:

constant power variable piston pump is adopted, constant power control effectively prevents diesel engine overload, and can withstand higher pressure and load than conventional gear pumps.

2. POWER SYSTEM:

diesel engine concrete pump has low energy consumption and high efficiency.

3. HOPPER DEVICE:

increase the hopper volume and equip the shed with a vibration motor to meet the requirements of pumping concrete.

4. ELECTRONIC CONTROL SYSTEM:

the main electrical appliances are Schneider, LS brand, and Chint.

5. COOLING SYSTEM:

air cooling or water cooling dual cooling system is adopted, which is not only suitable for high temperature weather, but also suitable for severe cold weather, controlling the oil temperature of the hydraulic system, and ensuring the safety and reliability of equipment operation.

6. CENTRALIZED LUBRICATION SYSTEM:

A plunger pump injects lubricant into the main line "point-to-point interlude protection", and the lubricant is distributed to the interlude slip points through the distributor. Protect key components from wear.

7. SPIPE VALVE:

It is made of high manganese steel as a whole casting, and the vulnerable surface is welded with anti-wear materials. It has the advantages of high pressure resistance and wear resistance: the inner cavity transition is smooth, the concrete flows smoothly inside, and the pumping performance is further improved; the spline shaft is made of alloy material for special surface treatment, which improves the wear resistance and fatigue strength.

8. GLASSES PLATE, CUTTING RING GLASSES PLATE, CUTTING RING ARE MADE OF HARD TRIBUTE ALLOY INLAY AND DURABLE.

9. HYDRAULIC PIPE JOINT:

The hose is provided by Alfa Gama of Italy or Gates of the United States.

10. WIRELESS REMOTE CONTROL:

THE FOLLOWING ARE PRODUCT-RELATED ACCESSORIES:



DIESEL ENGINE CONCRETE PUMP



MODEL	UNIT	SPECIFICATION
Motor power	Kw	30
power supply	V	380
Dimensions	mm	4000*1600*1600
weight	Kg	1500
Vertical Height	m	100
Horizontal conveying distance	m	180
Transport capacity	h	5 ³ -7 ³
Maximum particle diameter	cm	≤1.5
Discharge port diameter	mm	125-64
Cylinder stroke	mm	1000
Cylinder diameter	mm	140
Delivery pipe diameter	mm	64

DIESEL ENGINE CONCRETE PUMP

1. HIGH WORKING EFFICIENCY

It adopts hydraulic pumping, with high system reliability and stable delivery volume.

2. THE INJECTION VOLUME IS CONTINUOUSLY ADJUSTABLE:

The main oil pump adopts a variable plunger pump, and the injection speed can be freely adjusted.

3. THE AMOUNT OF ACCELERATOR ADDED IS CONTINUOUSLY ADJUSTABLE:

It can be infinitely adjusted according to the amount of spraying.

4. LONG LIFE OF VULNERABLE PARTS:

The service life of the host vulnerable parts is not less than 4000M3 of injection.

5. EQUIPPED WITH AUTOMATIC LUBRICATION SYSTEM:

Automatic lubrication is adopted for the main sealing parts, and the grease filling amount and filling time are automatically controlled, which greatly extends the life of vulnerable parts,

6. HUMANIZED PRODUCT DESIGN:

It is more convenient to operate.

THE FOLLOWING ARE PRODUCT-RELATED ACCESSORIES:



MICRO LARGE PARTICLE CONVEYING PUMP



MODEL	UNIT	SPECIFICATION
Motor power	Kw	15
power supply	V	380
Dimensions	mm	2000*700*1200
weight	Kg	600
Vertical Height	m	30
Horizontal conveying distance	m	60-70
Transport capacity	h	5 ³ -8 ³
Maximum particle diameter	cm	≤3
Discharge port diameter	mm	125
Cylinder stroke	mm	550
Cylinder diameter	mm	120
Delivery pipe diameter	mm	100

MICRO LARGE PARTICLE CONVEYING PUMP

This machine adopts mature hydraulic propulsion technology, pump truck principle, and revolutionary italic lifting layout template components. It not only completely solves the shortcomings of the previous secondary structural column pump, such as bulky volume, fast wear, easy pipe blocking, and difficult maintenance, but also has powerful effects and excellent performance. Once launched on the market, it has won the favor of customers. The motor power of this machine is only 15 kilowatts, the head is up to 15 meters, the volume is only the size of a bucket truck, and the weight is only more than 600 kilograms. It is not only flexible and convenient to move, but also has no dead angle coverage of beams and columns within a radius of 30 to 40 meters every time it moves. It is fully hose-transported and has a flow rate of up to 8 cubic meters per hour. This machine has a back-suction function, which can suck back the liquid when moving the pipe, and it is easier to move the empty pipe. The machine is more convenient to operate. All switch buttons use 24V safe voltage, remote control and manual dual control operation. People next to the machine and people holding the pipe can accurately start and stop the machine as needed, and there is no residual material spilling during the working process. The lifting hopper rises when moving, and the hopper is placed on the ground when working. The bucket truck can directly pour the material into the hopper to save labor for loading. Imported motor oil pump control system, simulates phase loss, prevents reverse rotation, prevents leakage, and prevents machine burnout.

WANCHI

THE FOLLOWING ARE PRODUCT-RELATED ACCESSORIES:



MICRO LARGE PARTICLE CONVEYING PUMP



MODEL	UNIT	SPECIFICATION
Motor power	Kw	15
power supply	V	380
Dimensions	mm	2000*700*1200
weight	Kg	600
Vertical Height	m	30
Horizontal conveying distance	m	60-70
Transport capacity	h	5 ³ -8 ³
Maximum particle diameter	cm	≤3
Discharge port diameter	mm	125
Cylinder stroke	mm	550
Cylinder diameter	mm	120
Delivery pipe diameter	mm	100

MICRO LARGE PARTICLE CONVEYING PUMP

This machine adopts mature hydraulic propulsion technology, pump truck principle, and revolutionary italic lifting layout template components. It not only completely solves the shortcomings of the previous secondary structural column pump, such as bulky volume, fast wear, easy pipe blocking, and difficult maintenance, but also has powerful effects and excellent performance. Once launched on the market, it has won the favor of customers. The motor power of this machine is only 15 kilowatts, the head is up to 15 meters, the volume is only the size of a bucket truck, and the weight is only more than 600 kilograms. It is not only flexible and convenient to move, but also has no dead angle coverage of beams and columns within a radius of 30 to 40 meters every time it moves. It is fully hose-transported and has a flow rate of up to 8 cubic meters per hour. This machine has a back-suction function, which can suck back the liquid when moving the pipe, and it is easier to move the empty pipe. The machine is more convenient to operate. All switch buttons use 24V safe voltage, remote control and manual dual control operation. People next to the machine and people holding the pipe can accurately start and stop the machine as needed, and there is no residual material spilling during the working process. The lifting hopper rises when moving, and the hopper is placed on the ground when working. The bucket truck can directly pour the material into the hopper to save labor for loading. Imported motor oil pump control system, simulates phase loss, prevents reverse rotation, prevents leakage, and prevents machine burnout.

WANCHI

THE FOLLOWING ARE PRODUCT-RELATED ACCESSORIES:



TRUCK MOUNTED FORKLIFT



SIZE	1.6METERS	1.2 METERS
	12V Electric Winch 6000 lbs	12V Electric Winch 6000 lbs
	With battery 12V20A	With battery 12V20A
	With charger	With charger
Accessories	Wireless remote control	Wireless remote control
	With limiter	With limiter
Dimensions	Length 92 Width 65 Height 124	Length 92 Width 65 Height 105
Deadweight	66 kg	60 kg
Load	300 kg	300 kg



ELECTRIC STACKER



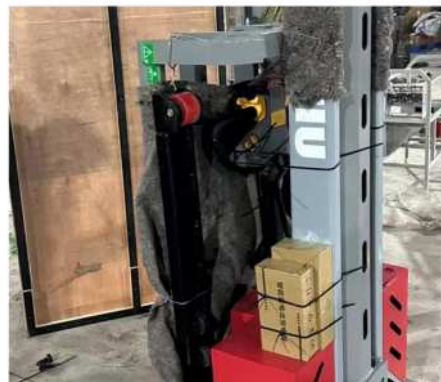
Smart & Customizable Lifting Solutions As a professional manufacturer, we offer high-efficiency Electric Stackers with various models (1.0T-3.5T) and lifting heights (1.6m-6m) to fit different warehouse needs. Why Choose Us? Compact & maneuverable design for narrow aisles Lithium/lead-acid battery options available Fully customizable (fork size, mast type, control system) OEM/ODM services available to meet your specific requirements. Upgrade your material handling with our electric stackers today!

PRODUCT	1.5M- 1T (LIFTING HEIGHT 1.5 METERS/LOAD 1 TON)	1.3M-1T (LIFTING HEIGHT1.3 METERS/LOAD CAPACITY 1 TON)	1.1M-1T (LIFTING HEIGHT 1.1M/LOAD 1 TON)
Lifting height	1500mm	1500mm	1500mm
Maximum lifting weight	1000kg	1000kg	1000kg
Load base	500mm	500mm	500mm
gross weight	460kg	460kg	460kg
Driving Mode	Multifunctional handle	Multifunctional handle	Multifunctional handle
Lifting Type	Hydraulic drive	Hydraulic drive	Hydraulic drive
Height (bottom floor)	1850mm	1650mm	1450mm
High (top floor)	3280mm	3080mm	2880mm
Overall length	1670mm	1670mm	1670mm
Overall width	900mm	900mm	900mm
Fork length	1190mm	1190mm	1190mm
Fork thickness	1500mm	1300mm	1100mm
Fork total width	615mm	615mm	615mm
Fork inner width	225mm	225mm	225mm

ELECTRIC STACKER

PRODUCT	1.5M-1T (LIFTING HEIGHT 1.5 METERS/LOAD 1 TON)	1.3M-1T (LIFTING HEIGHT 1.3 METERS/LOAD CAPACITY 1 TON)	1.1M-1T (LIFTING HEIGHT 1.1M/LOAD 1 TON)
Fork thickness	70mm	70mm	70mm
Electric Motor	0.75kw	0.75kw	0.75kw
Lifting motor	1.2kw	1.2kw	1.2kw
Turning Radius	1510mm	1510mm	1510mm
Battery capacity	55Ah	55Ah	55Ah
Battery voltage	24V	24V	24V
Charging voltage	1 10V-220V	1 10V-220V	1 10V-220V
Fast charge voltage	Continuously variable transmission	Continuously variable transmission	Continuously variable transmission
Brake Mode	Electromagnetic brake	Electromagnetic brake	Electromagnetic brake

WANCHI



THREE-WHEEL FORKLIFT



WEIGHT(KG)	800
Body width	1.2M
Travel motor	1500W
Maintenance-free battery	32A*5
Rear tire	450-12
Forks	1.22M
Body length	2.85M
Ride height	1.98M
Oil pump motor	1500W
Front tire	400-12
Elevated	1.4M

ENGINEERING TRANSPORT VEHICLE



Engineering transport vehicles are heavy-duty transport vehicles designed for complex working conditions such as construction, mining, and tunnel construction. Common types include dump trucks, off-road mining vehicles, tunnel transport vehicles, and all-terrain vehicles. They have strong power, high load-bearing capacity, superior off-road performance, and strong durability, and can adapt to heavy-duty transportation needs in harsh environments. They are widely used in earthwork engineering, mineral transportation, water conservancy construction, and infrastructure construction. When purchasing, you should focus on load capacity, driving environment, power system, safety, and after-sales guarantee to ensure efficient and stable operation.



ELECTRIC DUMP CAVALRY	
Vehicle dimensions	230*80*120cm
Hopper size	1500W
Battery capacity	32A*5
Gear	450-12
Vehicle load	1.22M
Motor power	2.85M

ELECTRIC LOADER



Efficient & Customizable Material Handling As a trusted manufacturer, we provide high-performance Electric Loaders designed for heavy-duty lifting and transport. Our range includes multiple models with varying capacities (1T-5T) to meet diverse industrial needs. Key Features: ☒ Powerful electric motor for smooth operation ☒ Robust construction for long-lasting durability ☒ Customizable options (load capacity, lift height, attachments) Ideal for warehouses, construction sites, and logistics hubs. OEM/ODM supported – tailor the loader to your exact requirements!

PRODUCT NAME	ELECTRIC FORKLIFT	18 HP ENHANCED FORKLIFT	8018 HP FORKLIFT0
Diesel Power	18/22/25/32 optional	18/22 HP	18/22 HP
Loading weight	500kg		
Gear setting	3 forwards and 1 backwards + high and low gears		
Lifting height	2700M	2200mm	2200mm
Bucket width	1200M	1000mm	1000mm
Loading and unloading height	2100M	1550mm	1550mm
Tire specifications	23×8.5-12 widened tubeless tire		1.98M
Machine weight	1000kg	650kg	650kg
Starter battery		12V	12V
Rated load		400kg	400kg
Lifting method		Hydraulic	Hydraulic
Lifting method		Four-wheel drive single cylinder	Four-wheel drive single cylinder

ELECTRIC PALLET TRUCK



Reliable & Customizable Material Handling Solutions As a leading manufacturer, we offer high-quality Electric Pallet Trucks designed for efficiency and durability. Our range includes multiple models with varying load capacities (1.5T~3T) and lift heights to suit diverse logistics needs. Key features: Long-lasting battery for extended operation Ergonomic design for operator comfort and safety Customizable options (fork length, control panels, accessories) Ideal for warehouses, factories, and distribution centers. OEM/ODM supported – tailor the truck to your requirements!

WANCHI



ELECTRIC PALLET TRUCK

MODEL: SEMI-ELECTRIC	CONTROLLER MODEL: 1500W WIRELESS STRUCTURE
Loading capacity: 3 tons	Motor model: Permanent magnet synchronous 1000W
Lifting method: hand pressure	Brake type: Electronic brake
Battery capacity	Drive gear: 20CrMnTi
Battery installation method: hidden	Drive wheel model: 320mm
Charger: Built-in test	Cylinder effective length: 120mm
Battery Model: Lead-acid 48V20A	Oil cylinder size: 40mm/integrated
Driving speed: <5KM/H	Minimum ground clearance: 80mm
Turtle speed: <3KM/H	Maximum height: 200mm
Climbing slope: 45° when unloaded, 20° when fully loaded	Fork length: 1180mm
	Fork length: 1180mm



ELECTRIC FORKLIFTV



As a leading manufacturer in the material handling industry, Powered by advanced battery systems, our forklifts deliver zero emissions, ultra-low noise, and exceptional energy efficiency. Wide Range of Models – From compact to heavy-duty, we provide diverse configurations to meet every need. Fully Customizable – Tailored solutions for specialized handling requirements. Ideal for warehousing, logistics, and manufacturing, our electric forklifts ensure smooth, eco-friendly, and high-productivity material handling. Contact us today for a customized solution.

Fork thickness	70mm	70mm	70mm
Electric Motor	0.75kw	0.75kw	0.75kw
Lifting motor	1.2kw	1.2kw	1.2kw
Turning Radius	1510mm	1510mm	1510mm
Battery capacity	55Ah	55Ah	55Ah
Battery voltage	24V	24V	24V
Charging voltage	1 10V-220V	1 10V-220V	1 10V-220V
Fast charge voltage	Continuously variable transmission	Continuously variable transmission	Continuously variable transmission
Brake Mode	Electromagnetic brake	Electromagnetic brake	Electromagnetic brake

WANCHI

ELECTRIC PALLET TRUCK



As a leading manufacturer in the material handling industry, Zero emissions, ultra-low noise, and high energy efficiency. Versatile Models – Lightweight to high-capacity options. Customizable – Tailored for your needs. Perfect for warehouses, logistics, and manufacturing. Contact us for a customized solution!

PRODUCT MODEL	1 TON THREE-POINT FORKLIFT
Product Battery	Motor model: Permanent magnet synchronous 1000W
Lifting method: hand pressure	4 maintenance-free batteries 48V/45A
Travel motor	2500W brushless motor
Oil pump motor	2200W
Product size	1.8*1*1.7M (without fork)
Front tire	Front wheel 400-8
Rear tire	Rear double wheels 300*100
Forged Forks	920MM
Lifting height	2M(customizable)
Product size	(without fork)1.8*1*1.7M
Product weight	1300kg