

FOREIGN TRADE BROCHURE

Hebei Honglian Metal Wire Mesh Co., Ltd.



Committed to providing
More environmentally friendly, more efficient and more advanced
Wire mesh products



WeChat: +8613373483555
Telephone: +8613373483555
Website: hl-metalmesh.com

Email: info@hl-metalmesh.com
WhatsApp: +8619932376137
Address: No. 9-1, Shuguang Street, West District, Raoyang County
Economic Development Zone, Hengshui City, Hebei Province

CONTENTS

COMPANY PROFILE

◆ Hebei Honglian Metal Wire Mesh Co., Ltd.

Located at the junction of Raoyang County and Anping County, Hebei Province, China, it is known as the "Hometown of Wire Mesh in China" by the Hardware Association. With our rich local screen manufacturing experience, we provide professional screen solutions for global users.

Established

30⁺ Year

Supporting
machinery

50⁺ tower

Technical team

60⁺ people

Cooperating
countries

20⁺ country

1 ABOUT US

Company Profile	01
Development path	02
Honor	04
Cooperation services	05

2 PRODUCT

Fence net series	06
Steel Mesh series	44
Steel grating series	66
Animal Cage Series	76
Filter series	82
Window Screen Series	96
Sound barrier series	114
Gabion net series	130
Net rope series	140
Wire series	152

Table of contents

Company's History

With more than 30 years of experience in wire mesh design and production, the company has gradually developed into a comprehensive enterprise integrating product design, production, installation, construction and trade.

Product range

The company's products cover many fields, including but not limited to steel mesh, fence mesh, gabion mesh, guardrails, pet cages, mesh ropes, sound barriers and other products. These products are widely used in many fields such as construction engineering, transportation infrastructure, environmental protection, and daily life.

Equipment and workshops

The company covers an area of more than 60,000 square meters, has more than 50 wire mesh supporting machines, more than ten wire mesh production lines, and more than 10 standardized workshops, including hot-dip galvanizing workshop, dipping workshop, spraying workshop, fluorocarbon The spraying workshop, metal mesh workshop, welding workshop, steel column workshop, stamping and shearing workshop, assembly workshop and finished product warehouse have achieved transparent management of the entire process. Ensure product quality and production efficiency.

Market coverage

At present, our products sell well in more than 30 provinces, cities and autonomous regions in China, and we have established friendly cooperative relationships in more than 20 countries and regions in Asia, Southeast Asia, Africa and North America. The company is committed to continuously expanding its international market share, looking for more partners around the world, and providing broader and more professional wire mesh solutions to the world.

Professional team

The company has established multiple mature teams, including a design team of more than 10 people, a technical R&D team of more than 20 people, a product testing team of more than 10 people, an international trade team of more than 20 people, and a team of hundreds of operating workers. Through teamwork, we have won a number of domestic production invention patents, and have been rated as high-tech enterprises and specialized new enterprises.



DEVELOPMENT PATH



International market expansion

The company's products sell well in more than 30 provinces, municipalities, and autonomous regions in China, and it has established solid and long-term cooperative relationships with more than 20 countries and regions in Asia, Southeast Asia, Africa, and North America. The company continues to expand its international market share, looks for more partners, and provides broader and more professional wire mesh solutions.

Future outlook

Hebei Honglian Metal Wire Mesh Co., Ltd. will continue to be committed to technological innovation, product quality improvement, broadening market channels, strengthening cooperation with customers, and further consolidating its leading position in the wire mesh industry. The company is willing to develop together with its partners and provide better quality wire mesh products and services for construction and life around the world.



Establish trading department

The company established a trading department to develop international markets. Began to provide wire mesh solutions to global users, and gradually established a solid and long-term international cooperative relationship.



Technological innovation and patent honors

Through the team's superb technology and collaborative cooperation, the company team has won a number of production invention patents in the country, and has been rated as a high-tech enterprise and a specialized and special new enterprise.



Early days of company establishment

Hebei Honglian Metal Wire Mesh Co., Ltd. was established at the junction of Raoyang County and Anping County, Hebei Province, China. In the early days, it focused on traditional wire mesh manufacturing business.



Product line expansion

After accumulating many years of experience in the field of wire mesh manufacturing, the company gradually expanded its product line and began to provide more types of wire mesh products, including reinforced mesh, fence mesh, etc.



Transparent management of the whole process

The company has set up a production base of more than 60,000 square meters in Anping, including more than 10 standardized workshops such as hot-dip galvanizing workshop, dipping workshop, plastic spraying workshop, fluorocarbon spraying workshop, and metal mesh workshop, achieving transparent management of the entire process.



Honor



COOPERATION SERVICES

Provide more comprehensive and in-depth excellent screen solutions

◆ Brand business services

Diversified choices: Provide a wide range of product choices, covering different materials, specifications and coatings, to meet the diverse needs of buyers.

Customized orders: According to the special needs of buyers, we provide customized wire mesh products to ensure that personalized requirements are met.

◆ Buyer services

Customized design: Provide professional screen customization design services to brand owners to ensure that products are highly consistent with the brand image.

Exclusive cooperation: Establish long-term cooperative relationships with brands, provide exclusive product lines, and protect brand uniqueness.

◆ End user services

Professional consulting: Provide professional product consulting services to end users and recommend the most suitable wire mesh solutions according to needs.

Installation services: Provide on-site installation services to ensure that products are installed properly and achieve the best results.

After-sales guarantee: Provide comprehensive after-sales guarantee services to solve problems during use and ensure long-lasting and stable operation of the product.

◆ Government services

Government project support: Provide professional wire mesh solutions for government municipal projects, including landscape guardrails, road guardrails, etc.

Compliance production: Strictly abide by national regulations and government standards to ensure that products meet government procurement standards.

Timely delivery: Commitment to deliver government projects on time to ensure the project progresses as planned.





Fence net series

Including 358 guardrail, triangular bending guardrail, steel fence, temporary guardrail, sports field guardrail, workshop guardrail...

Welcome to communicate with us at any time!

◆ 01. 358 Fence

08-09



◆ 02. 3D Fence

10-11



◆ 03. Steel fence

12-13



◆ 04. Temporary fence

14-15



◆ 05. Chain link fence

16-17



◆ 06. 2D double wire fence

18-19



◆ 07. Workshop Fence net

20-21



◆ 08. Barbed wire Fence net

22-23



◆ 09. Road landscape Fence net

24-25



◆ 10. Anti-throw net

26-27



◆ 11. Anti-Fence net

28-29



◆ 12. Engineering construction Fence net

30-31



◆ 13. Highway Fence net

32-33



◆ 14. Airport Fence net

34-35



◆ 15. Prison Fence net

36-37



◆ 16. Municipal Fence

38-39



◆ 17. Railway Fence net

40-41



◆ 18. Iron horse

42-43



WeChat:+8613373483555

Telephone:+8613373483555

Address:No. 9-1, Shuguang Street, West District, Raoyang County Economic Development Zone, Hengshui City, Hebei Province

Email:info@hl-metalmesh.com

WhatsApp:+8619932376137

Website:hl-metalmesh.com

◆ 358 fence



358 fence is a metal fence product designed for high security needs. It is named after its mesh hole size of 3 inches x 0.5 inches x 8, which is approximately 76.2mm x 12.7mm x 4mm. This unique mesh design provides visual transparency while maintaining a high degree of security to prevent intrusion by criminals.

◆ Specification

Material

Made of high-strength steel, usually hot-dip galvanized steel or coated steel to improve corrosion resistance.

Diameter data

Mainly composed of 4mm diameter steel wire to ensure durability.

◆ Dimensions

Grid size

3 inches x 0.5 inches (about 76.2mm x 12.7mm) rectangular grid.

Fence height

Customized as needed, common heights include 2 meters, 2.4 meters, etc.

Surface treatment

Hot-dip galvanizing or coating processes are used to enhance the corrosion resistance of the product, and a variety of color options are available, such as green, black, etc.

Fence height

Customized as needed, common heights include 2 meters, 2.4 meters, etc.

Customization

Materials, sizes, and surface treatments can be customized according to specific needs to meet the requirements of different scenarios.

◆ Quality Control

Material quality

Strict material testing is performed on the steel used in the fence to ensure that it meets relevant standards and has sufficient strength and corrosion resistance.

Welding process

Control the welding process of the fence to ensure that the weld is firm and uniform, and improve the overall structural strength and stability.

Surface treatment

358 fence usually use hot-dip galvanizing or electro-galvanizing surface treatment to improve the product's corrosion resistance and ensure that it will not rust after long-term use.

Dimensional accuracy

Accurately test the size of the fence to ensure that the product meets the requirements of the design and specifications to ensure accuracy during installation.

Anti-corrosion testing

Test the anti-corrosion coating on the surface to ensure its quality and increase the service life of the product.

◆ Applicable scene

358 fence is widely used in places that require high security, such as prisons, military areas, airports, etc. Its special grid design and high-strength steel make it an ideal choice for security protection.

◆ Installation

The 358 fence is flexible to install and can be fixed by welding or connecting parts, suitable for various terrains and environments.

◆ Precautions

Storage

Store in a dry and ventilated place, avoid long-term moisture to ensure the service life of the product.

Protection

Regularly inspect the fence to ensure that the fence is intact and repair damaged parts in time to maintain the function of the fence.

Packaging materials: Use waterproof and anti-corrosion packaging materials, such as plastic film, cardboard, etc., to protect the product from the external environment.

Fixing method: Use binding tape or packaging tape to fix the fence to prevent displacement or collision during transportation.

◆ 3D fence



The triangular bending Fence is a uniquely designed metal Fence with a triangular bending structure, which provides higher strength and stability. It is suitable for a variety of scenarios, such as parks, construction sites, roads, etc. It is both practical and aesthetically pleasing.

◆ Specification

Material

Made of high-quality galvanized steel pipe or aluminum alloy, with good corrosion resistance and strength.

Diameter data

The diameter of steel pipe or aluminum alloy pipe is usually standard size, such as 48mm, 60mm, etc., which can be customized according to needs.

◆ Dimensions

Dimensional data

According to the needs of specific application scenarios, guardrail nets of different heights and lengths can be customized.

Surface treatment

Steel pipes are usually hot-dip galvanized, and aluminum alloys can be anodized.

Color

Aluminum alloy can be customized in a variety of colors, and steel pipes are usually in silver or other standard colors.

Customization

Materials, sizes and surface treatments can be personalized according to the customer's specific needs.

◆ Quality Control

Material selection

Choose high-quality metal materials that are weather-resistant and corrosion-resistant, such as galvanized steel, to ensure that the product has good durability when used outdoors.

Welding process

High-standard welding process is adopted to ensure that the solder joints are firm and the overall structure is strong and able to withstand external pressure. The structure of the mobile guardrail network should be reasonably designed and easy to disassemble and install quickly.

Surface treatment

Carry out anti-corrosion and anti-rust treatment, such as plastic spraying, electroplating, etc., to improve the weather resistance of the guardrail and slow down metal corrosion.

Dimensional accuracy

Produced in strict accordance with design requirements to ensure dimensional consistency of each guardrail unit for coordination and beauty during assembly.

Mobile performance

Ensure that the mobile guardrail network has a reasonable structural design, is easy to move and build, and can adapt to different sites and environments.

Safety design

Comply with national construction and safety standards to ensure that the guardrail net can not only enclose but also ensure safety during use.

◆ Applicable scene

It is suitable for temporary construction site isolation, safe isolation of large-scale event venues, and emergency site enclosure.

◆ Installation method

It is easy to install and is usually fixed by connectors or brackets, allowing for quick disassembly and assembly. Suitable for different floors, such as cement floor, land, etc.

◆ Precautions

Storage

It is recommended to store in a dry and ventilated place to avoid prolonged moisture.

Protection

Pay attention to prevent collision and damage during use, and perform timely maintenance.

Packaging materials: Use sturdy packaging materials, usually wooden boxes or plastic films, to prevent crushing or damage during transportation.

Packaging method: Use professional packaging method to reasonably layer and fix the mobile guardrail net to ensure stability during transportation.

◆ Steel fence



Steel fence is a sturdy and durable safety protection facility, usually used in traffic roads, parks, construction sites and other places. Its unique design and solid structure not only provide effective protection, but also have good visual transparency without affecting the overall beauty of the site.

◆ Specification

Material

High-quality hot-dip galvanized steel pipe with corrosion resistance.

Diameter data

Steel pipe diameters are usually standard sizes, such as 48mm, 60mm, etc., and can be customized according to needs.

◆ Dimensions

Dimensional data

The standard size is 2.5m × 1.2m, which can also be customized according to customer needs.

Surface treatment

Hot-dip galvanizing to enhance the corrosion resistance of the product.

Color

The iron horse guardrail is usually silver, and can also be painted according to customer needs.

Customization

Provide personalized customization services in materials, sizes, and surface treatments to meet the needs of different customers.

◆ Quality Control

Material selection

Choose high-strength, corrosion-resistant steel or aluminum to ensure the product has good structural strength and durability.

Welding process

Adopt advanced welding process to ensure that the solder joints are firm, the overall structure is stable, and can withstand external impact.

Surface treatment

Carry out anti-corrosion and anti-rust treatment, using plastic spraying, hot-dip galvanizing and other methods to improve the corrosion resistance of the product.

Dimensional accuracy

Production is carried out strictly in accordance with the design dimensions to ensure the dimensional consistency of each iron horse guardrail unit to facilitate construction and installation.

Safety standards

Comply with relevant national and transportation industry safety standards to ensure that the iron horse guardrail meets safety requirements during use.

◆ Applicable scene

It is suitable for scenes that require protection such as traffic roads, parks, construction sites, and public places.

◆ Installation method

Easy to install, usually via bolts, the fence can be set up quickly.

It can be fixed through anchor bolts or concrete foundation to improve overall stability.

◆ Precautions

Storage

It is recommended to store in a dry and ventilated place to avoid long-term exposure of the product to moisture.

Protection

During use, pay attention to prevent collision and damage, and perform timely maintenance.

Packaging materials: Use sturdy packaging materials, usually wooden boxes or plastic films, to prevent crushing or damage during transportation.

Packaging method: Use professional packaging method to reasonably layer and fix the mobile guardrail net to ensure stability during transportation.

◆ Temporary fence



Temporary fence is a flexible and portable protective facility designed to provide temporary safe isolation in different situations. Its characteristics are that it is easy to transport and install, can flexibly respond to different space requirements, and is suitable for temporary construction, activities, events and other scenarios.

◆ Specification

Material

Made of high-quality galvanized steel pipe or aluminum alloy, with good corrosion resistance and strength.

Diameter data

The diameter of steel pipe or aluminum alloy pipe is usually standard size, such as 48mm, 60mm, etc., which can be customized according to needs.

◆ Dimensions

Dimensional data

According to the needs of specific application scenarios, guardrail nets of different heights and lengths can be customized.

Surface treatment

Steel pipes are usually hot-dip galvanized, and aluminum alloys can be anodized.

Color

Aluminum alloy can be customized in a variety of colors, and steel pipes are usually in silver or other standard colors.

Customization

Materials, sizes and surface treatments can be personalized according to the customer's specific needs.

◆ Quality Control

Material selection

Choose high-quality metal materials that are weather-resistant and corrosion-resistant, such as galvanized steel, to ensure that the product has good durability when used outdoors.

Welding process

High-standard welding process is adopted to ensure that the solder joints are firm and the overall structure is strong and able to withstand external pressure. The structure of the mobile guardrail network should be reasonably designed and easy to disassemble and install quickly.

Surface treatment

Carry out anti-corrosion and anti-rust treatment, such as plastic spraying, electroplating, etc., to improve the weather resistance of the guardrail and slow down metal corrosion.

Dimensional accuracy

Produced in strict accordance with design requirements to ensure dimensional consistency of each guardrail unit for coordination and beauty during assembly.

Mobile performance

Ensure that the mobile guardrail network has a reasonable structural design, is easy to move and build, and can adapt to different sites and environments.

Safety design

Comply with national construction and safety standards to ensure that the guardrail net can not only enclose but also ensure safety during use.

◆ Applicable scene

It is suitable for temporary construction site isolation, safe isolation of large-scale event venues, and emergency site enclosure.

◆ Installation method

It is easy to install and is usually fixed by connectors or brackets, allowing for quick disassembly and assembly. Suitable for different floors, such as cement floor, land, etc.

◆ Precautions

Storage

It is recommended to store in a dry and ventilated place to avoid prolonged moisture.

Protection

Pay attention to prevent collision and damage during use, and perform timely maintenance.

Packaging materials: Use sturdy packaging materials, usually wooden boxes or plastic films, to prevent crushing or damage during transportation.

Packaging method: Use professional packaging method to reasonably layer and fix the mobile guardrail net to ensure stability during transportation.

◆ Chain link fence



Sports field fencing is a fencing system specially designed for stadiums and sports venues. Designed with safety, durability and aesthetics in mind, it is suitable for all types of sports venues. This fence net is usually made of high-quality materials and undergoes precision processing and surface treatment to ensure long-term use in different climate conditions.

◆ Specification

Material

Commonly used materials include galvanized wire, steel wire, etc., which have good corrosion resistance and strength.

Diameter data

The diameter can be customized according to different models and requirements. Common diameters are 3–8mm, etc.

◆ Dimensions

Dimensional data

The height and length of the fence can be customized according to the specific needs of the site, ensuring that the coverage and height of the fence meet relevant standards.

Surface treatment

Generally hot-dip galvanizing is used to protect the fence from corrosion. At the same time, you can also choose surface treatments such as anodizing to increase the aesthetics and durability of the fence.

Color

There are many colors to choose from.

Customization

Materials, sizes and surface treatments can be customized according to customers' specific needs to meet different site and design requirements.

◆ Quality Control

Material selection

Use high-quality weather-resistant and corrosion-resistant metal materials such as galvanized steel or steel wire to ensure that the product has good durability when used outdoors.

Surface treatment

Anti-corrosion and anti-rust treatment, such as plastic spraying, electroplating, anodizing, etc., to improve the weather resistance of the fence and slow down metal corrosion.

Structural design

The fence structure should be reasonably designed, stable and durable, comply with safety standards, and be able to withstand the pressure of the sports venue.

Dimensional accuracy

Production is carried out in strict accordance with the design requirements to ensure that each fence unit has consistent dimensions, and the construction is coordinated and beautiful.

Color selection

According to the design and style of the sports venue, there are a variety of colors to choose from, making the fence better blend into the venue environment.

Safety design

Comply with national construction and safety standards to ensure that the fence can not only enclose but also protect people's safety during use.

◆ Applicable scene

Mainly suitable for gardens, roads, construction sites, farms, etc., to provide safe isolation and protection for people.

◆ Installation method

Guardrails are flexible to install and versatile. You can choose underground burial, anchor bolts or other customized methods for reasonable installation according to different sites and design requirements.

◆ Precautions

Storage

Store in a dry and ventilated place to avoid long-term moisture to maintain the quality and appearance of the fence.

Protection

Regular inspections are required during use to ensure that the fence structure is stable and damaged parts are repaired or replaced in a timely manner.

Packaging materials: Use sturdy packaging materials, usually wooden boxes or plastic films, to prevent crushing or damage during transportation.

Packaging method: Use professional packaging methods and rationally layer and fix the fence to ensure stability during transportation.

◆ 2D double wire fence



Double wire mesh fence are also named as double rod fence panel or double rod grid fencing. It has refining deign, plain panel and installs convenient. Double wire mesh fence material:low carbon steel wire and galvanized wire. Double wire mesh fence surface treatment:hot galvanized,plastic spraying or plastic dipping.

◆ Specification

Material

Made of high-quality galvanized steel pipe or aluminum alloy, with good corrosion resistance and strength.

Diameter data

The diameter of steel pipe or aluminum alloy pipe is usually standard size, such as 48mm, 60mm, etc., which can be customized according to needs.

◆ Dimensions

Dimensional data

According to the needs of specific application scenarios, guardrail nets of different heights and lengths can be customized.

Surface treatment

Steel pipes are usually hot-dip galvanized, and aluminum alloys can be anodized.

Color

Aluminum alloy can be customized in a variety of colors, and steel pipes are usually in silver or other standard colors.

Customization

Materials, sizes and surface treatments can be personalized according to the customer's specific needs.

◆ Quality Control

Material selection

Choose high-quality metal materials that are weather-resistant and corrosion-resistant, such as galvanized steel, to ensure that the product has good durability when used outdoors.

Welding process

High-standard welding process is adopted to ensure that the solder joints are firm and the overall structure is strong and able to withstand external pressure. The structure of the mobile guardrail network should be reasonably designed and easy to disassemble and install quickly.

Surface treatment

Carry out anti-corrosion and anti-rust treatment, such as plastic spraying, electroplating, etc., to improve the weather resistance of the guardrail and slow down metal corrosion.

Dimensional accuracy

Produced in strict accordance with design requirements to ensure dimensional consistency of each guardrail unit for coordination and beauty during assembly.

Mobile performance

Ensure that the mobile guardrail network has a reasonable structural design, is easy to move and build, and can adapt to different sites and environments.

Safety design

Comply with national construction and safety standards to ensure that the fence can not only enclose but also protect people's safety during use.

◆ Applicable scene

It is suitable for temporary construction site isolation, safe isolation of large-scale event venues, and emergency site enclosure.

◆ Installation method

It is easy to install and is usually fixed by connectors or brackets, allowing for quick disassembly and assembly. Suitable for different floors, such as cement floor, land, etc.

◆ Precautions

Storage

It is recommended to store in a dry and ventilated place to avoid prolonged moisture.

Protection

Pay attention to prevent collision and damage during use, and perform timely maintenance.

Packaging materials: Use sturdy packaging materials, usually wooden boxes or plastic films, to prevent crushing or damage during transportation.

Packaging method: Use professional packaging method to reasonably layer and fix the mobile guardrail net to ensure stability during transportation.

◆ Workshop Fence net



Workshop Fence is a metal Fence product specially designed for safety protection in workshops and industrial areas. Its sturdy construction and customizable features make it ideal for safety management inside the workshop. Workshop Fence not only provide safety protection, but also effectively divide work areas to ensure orderly production and operations.

◆ Specification

Material

Typically high-strength steel, such as hot-dip galvanized steel or coated steel, for improved corrosion resistance.

Diameter data

Mainly composed of thicker diameter steel wire to ensure the solidity of the guardrail.

◆ Dimensional data

Grid size

Customized according to workshop needs, usually square or rectangular grid.

Guardrail height

It can be customized according to specific site conditions and safety requirements. Common heights include 1.5 meters, 2 meters, etc.

Surface treatment

Use processes such as hot-dip galvanizing or coating to enhance the anti-corrosion properties of the product, while providing a variety of color options, such as yellow, orange, etc.

Customization

Materials, sizes, and surface treatments can be customized according to the specific needs of the workshop to meet different safety standards and style requirements.

◆ Quality Control

Material quality

Strict material testing is conducted on the steel used in guardrails to ensure that it meets relevant standards and has sufficient strength and corrosion resistance.

Welding process

Control the welding process of the guardrail to ensure that the welds are firm and uniform, and improve the overall structural strength and stability.

Surface treatment

Workshop guardrails usually use hot-dip galvanizing or plastic spray surface treatment to improve the corrosion resistance of the product and ensure that it will not rust for a long time.

Dimensional accuracy

Carry out accurate detection of guardrail dimensions to ensure that the product meets the design and specification requirements to ensure accuracy during installation.

Anti-corrosion testing

Test the anti-corrosion coating on the surface to ensure its quality and improve the service life of the product.

◆ Applicable scene

Workshop guardrail nets are widely used in industrial workshops, production lines, equipment areas and other places that require safe isolation. Its high strength and stability make it suitable for safety protection and space division inside the workshop.

◆ Installation method

The installation method of workshop guardrail net is flexible and can be fixed by welding or connecting parts. Choose the appropriate method according to specific needs.

◆ Precautions

Storage

Store in a dry and ventilated place to avoid prolonged moisture.

Protection

During use, the integrity of the guardrail must be checked regularly to ensure the safety protection effect.

Packaging materials: Use waterproof and anti-corrosion packaging materials, such as plastic films, cartons, etc., to protect products from the external environment.

Fixing method: Use binding tape or packaging tape to fix the guardrail to prevent displacement or collision during transportation.

◆ Barbed wire Fence net



Barbed wire Fence is a product designed to provide efficient safety protection. It is made of sturdy material and has a special surface treatment that makes it anti-corrosion and durable. Barbed wire Fence can not only provide physical barriers to effectively block intruders, but also act as a deterrent and are suitable for security protection needs in a variety of scenarios.

◆ Specification

Material

Usually high-strength steel is used to ensure the sturdiness and durability of the barbed wire guardrail.

Diameter data

Mainly depends on the selected barbed wire material to ensure sufficient strength.

◆ Dimensional data

Guardrail height

It can be customized according to the specific site safety requirements, usually ranging from 1.5 meters to 3 meters.

Barbed wire length

Can be customized according to site size and needs.

Surface treatment

Use anti-corrosion treatment, such as hot-dip galvanizing, plastic spraying, etc., to increase the service life of the guardrail.

Color

Provides a variety of color options to suit different scenarios and customer needs.

Customization

Materials, sizes and surface treatments can be personalized according to customer specific needs to meet different safety standards and style requirements.

◆ Quality Control

Material quality

Conduct quality inspections on the steel and barbed wire used in barbed wire guardrails to ensure that they meet relevant standards and have sufficient strength and corrosion resistance.

Barbed wire production process

Control the barbed wire production process to ensure the production quality of each barbed wire section and firmly connect it to the guardrail structure to prevent falling off and deformation.

Welding process

Quality control the welding process of the guardrail to ensure that the welds are firm and uniform, and improve the overall structural strength and stability.

Surface treatment

Barbed wire guardrails usually use hot-dip galvanizing or plastic spray surface treatment to improve the corrosion resistance of the product and ensure that it will not rust for long-term use.

Dimensional accuracy

Accurately detect the dimensions of guardrails and barbed wires to ensure that the products meet the design and specification requirements to ensure accuracy during installation.

Anti-corrosion testing

Test the anti-corrosion coating on the surface to ensure its quality and improve the service life of the product.

◆ Applicable scene

Barbed wire guardrails are suitable for places that require enhanced security protection, such as prisons, military bases, airports, borders, etc. Its unique design can effectively block potential intruders and provide efficient security.

◆ Installation method

The installation method of barbed wire guardrails can be selected according to specific needs. Welding or connectors are usually used to ensure that the guardrails are stable and reliable.

◆ Precautions

Storage

Store in a dry and ventilated place to avoid prolonged moisture.

Protection

During use, pay attention to your own safety and avoid touching the barbed wire to ensure safe use.

Packaging materials: Use waterproof and anti-corrosion packaging materials, such as plastic films, cartons, etc., to protect products from the external environment.

Fixing method: Use binding tape or packaging tape to fix the guardrail to prevent displacement or collision during transportation.

◆ Road landscape Fence net



Road landscape Fence is a Fence product designed to beautify road landscape and improve traffic safety. Its unique shape not only meets the traffic function, but also has good decorative properties. It is suitable for urban roads, parks, squares and other places, providing people with safety protection while also improving the aesthetics of the environment.

◆ Specification

Material

Usually high-strength steel or aluminum alloy is used to ensure the solidity and durability of the guardrail.

Diameter data

Mainly depends on the material selected to ensure sufficient strength.

◆ Dimensional data

Guardrail height

Can be customized according to specific landscape design and safety requirements, usually ranging from 1 meter to 2.5 meters.

Guardrail length

Customized according to the length of the road or site to ensure overall integrated beauty.

Surface treatment

Use anti-corrosion treatment, such as hot-dip galvanizing, plastic spraying, etc., to increase the service life of the guardrail.

Color

A variety of color options are available to suit different landscapes and customer needs, and can also be customized according to the colors specified by road standards.

Customization

Materials, sizes and surface treatments can be customized according to customer specific needs to meet different design requirements.

◆ Quality Control

Material quality

Conduct quality inspections on the metal materials used to ensure that they meet relevant standards and have sufficient strength and weather resistance.

Production process

Control the production process of the guardrail net to ensure that each solder joint is firm and the overall structure is uniform, improving the stability and durability of the guardrail.

Welding process

Quality control the welding process of the guardrail net to ensure that the welds are firm and uniform to improve the overall structural strength.

Anti-corrosion treatment

Road landscape guardrails usually undergo anti-corrosion treatment such as hot-dip galvanizing or plastic spraying to increase the corrosion resistance of the product and ensure that it will not rust easily when used outdoors.

Dimensional accuracy

Accurately detect the size of the guardrail net to ensure that the product meets the design and specification requirements for installation and use on the road.

◆ Applicable scene

Road landscape guardrail network is suitable for urban main roads, secondary roads, parks, squares, scenic spots and other places to provide traffic guidance, safety protection, and beautify the environment.

◆ Installation method

The installation method of road landscape guardrail network can be selected according to specific needs. Bolt connection or other connection methods are usually used to ensure that the guardrail is strong and reliable.

◆ Precautions

Storage

Store in a dry and ventilated place to avoid prolonged moisture.

Protection

During use, pay attention to your own safety and avoid touching the guardrail to ensure safe use.

Packaging materials: Use waterproof and anti-corrosion packaging materials, such as plastic films, cartons, etc., to protect products from the external environment.

Fixing method: Use binding tape or packaging tape to fix the guardrail net to prevent displacement or collision during transportation.

◆ Anti-throw net



Anti-throw net is a safety protection product specially designed to prevent thrown objects. Its main function is to effectively prevent falling objects from heights, objects thrown from construction sites, and objects thrown from road traffic, thereby reducing the risk of injury. Anti-throw nets are widely used in construction sites, road construction, bridge maintenance and other occasions, providing additional safety protection for workers and surrounding people.

◆ Specification

Material

Generally, high-strength and durable polypropylene or polyester materials are used to ensure the firmness and tensile strength of the anti-throw net.

Diameter data

The appropriate diameter is usually selected according to specific needs to ensure the stability of the anti-throw net.

◆ Dimensional data

Mesh size

Moderate mesh size can provide effective protection without affecting permeability.

Mesh size

Can be customized according to specific uses and engineering needs to ensure coverage.

Surface treatment

Use waterproof, sun-resistant and other treatments to increase the service life of the anti-throw net.

Color

A variety of color options are available to suit different scenarios and customer needs, and can also be customized according to safety standards.

Customization

Materials, sizes and surface treatments can be customized according to the specific needs of customers to meet the requirements of different projects.

◆ Quality Control

Material selection

Use high-strength, corrosion-resistant materials, such as stainless steel, galvanized steel wire, etc., to ensure the stability and durability of the anti-throw net.

Mesh size

Control the size of the mesh so that it can effectively prevent the penetration of thrown objects and ensure the safety of the anti-throw net.

Structural design

A well-designed grid structure gives the anti-throw net sufficient strength and stability to withstand external impact.

Production process

Adopt advanced production technology to ensure that each connection point is firm and the overall structure is uniform, improving the wind pressure resistance of the anti-throw net.

Anti-corrosion treatment

For outdoor use environment, anti-corrosion treatment, such as hot-dip galvanizing or plastic spraying, can extend the service life of the anti-throw net.

◆ Applicable scene

Anti-throw nets are suitable for construction sites, road construction, bridge maintenance and other occasions where falling and thrown objects need to be prevented from high altitude, providing additional safety protection for workers and surrounding people.

◆ Installation method

The installation method of the anti-throw net is flexible and can be fixed according to specific project requirements. Ropes or fixed frames are usually used to ensure firmness and reliability.

◆ Precautions

Storage

Store in a dry and ventilated place to avoid prolonged moisture.

Protection

During use, pay attention to your own safety and avoid touching the anti-throw net to ensure safe use.

Packaging materials: Use waterproof and anti-corrosion packaging materials, such as plastic films, woven bags, etc., to prevent the anti-throw net from being affected by moisture and corrosion during transportation.

Fixing method: Use binding tape or packaging tape to fix the anti-throw net to prevent shifting or deformation during transportation.

◆ Anti-Fence net



Anti-sickness net is a safety protection product specially designed to prevent fainting at high altitudes. Its main function is to effectively prevent injuries caused by fainting or accidentally falling when working at high altitudes, and to provide additional safety protection for high-altitude workers. Anti-sickness nets are widely used in high-altitude working places such as construction, decoration projects, and bridge maintenance.

◆ Specification

Material

Made of high-strength and durable polypropylene or polyester to ensure the firmness and tensile strength of the anti-halation net.

Diameter data

Usually the appropriate diameter is selected according to specific needs to ensure the stability of the anti-sickness net.

◆ Dimensional data

Mesh size

Moderate mesh size can provide effective protection without affecting permeability.

Mesh size

Can be customized according to specific uses and engineering needs to ensure coverage.

Surface treatment

Waterproof, sunfast and other treatments are used to increase the service life of the anti-halation net.

Color

A variety of color options are available to suit different scenarios and customer needs, and can also be customized according to safety standards.

Customization

Materials, sizes and surface treatments can be customized according to the specific needs of customers to meet the requirements of different projects.

◆ Quality Control

Material selection

Choose materials with excellent weather resistance and aging resistance, such as high-density polyethylene (HDPE), etc., to ensure that the anti-glare net will not be damaged after long-term use in outdoor environments.

Color fastness

Conduct a fastness test on the color of the anti-glare mesh to ensure that it does not fade under natural conditions such as sunlight and rain, and maintains good visual effects.

Light transmittance

Control the light transmittance of the anti-glare net so that it can block sunlight while maintaining appropriate lighting effects to ensure sufficient indoor light.

Fire resistance

For outdoor environments, anti-glare nets need to have certain flame retardant properties to reduce the risk of fire.

Tensile strength

Test the tensile strength of the anti-glare net to ensure that it is not easily torn or damaged under extreme weather conditions such as wind and rain.

◆ Applicable scene

Anti-sickness nets are suitable for various high-altitude working places, such as construction, decoration projects, bridge maintenance, etc., to provide safety protection for high-altitude workers.

◆ Installation method

The installation method of the anti-sickness net is flexible and can be fixed according to specific project requirements. Ropes or fixed frames are usually used to ensure firmness and reliability.

◆ Precautions

Storage

Store in a dry and ventilated place to avoid prolonged moisture.

Protection

During use, pay attention to your own safety and avoid touching the anti-sickness net to ensure safe use.

Packaging materials: Use waterproof and dustproof packaging materials, such as plastic films, woven bags, etc., to protect the anti-glare net from the external environment.

Fixing method: Use binding tape or packaging tape to fix the anti-glare net to prevent shifting or damage during transportation.

◆ Engineering construction Fence net



Engineering construction Fence is a metal mesh product specially designed for the enclosure and protection of engineering sites such as construction and road construction. Made of high-strength and durable materials, it has a solid structure and flexible installation, providing effective isolation and safety protection for the construction site.

◆ Specification

Material

Galvanized steel pipe is used to ensure that the guardrail network has excellent corrosion resistance.

Diameter data

The diameter of steel pipe is generally 20mm to ensure sufficient strength.

◆ Dimensional data

Dimensional data

The standard height is 1.8 meters, the length can be customized according to needs, usually ranging from 2.5 meters to 3.5 meters.

Surface treatment

The steel pipe is hot-dip galvanized to increase the anti-corrosion performance of the product.

Color

Generally eye-catching yellow or orange is used to improve visibility.

Customization

Materials, sizes and surface treatments can be customized according to customer specific needs.

◆ Quality Control

Material selection

Use high-strength, corrosion-resistant materials, such as hot-dip galvanized steel pipes, etc., to ensure that the

guardrail network has a long service life in harsh outdoor environments.

Welding quality

Carry out quality control on the welded parts of guardrail nets to ensure that the welds are firm and uniform, and improve the stability of the overall structure.

Surface treatment

Carry out anti-corrosion surface treatment, such as hot-dip galvanizing, plastic spraying, etc., to increase the weather resistance and corrosion resistance of the guardrail net.

Dimensional accuracy

Control the dimensional accuracy of the guardrail network to ensure that the production of each component meets the design requirements to ensure the accuracy of the overall installation.

Quality of connectors

If the guardrail is assembled with connectors, the quality of the connectors should be tested to ensure the strength and durability of the connectors.

◆ Applicable scene

Engineering construction guardrail nets are widely used in construction sites, road construction, temporary engineering fencing and other scenarios to protect, isolate and guide traffic.

◆ Installation method

The guardrail network is easy to connect and can be assembled through connectors to form an integral guardrail wall. The bracket design is flexible and adapts to different terrains and sites.

◆ Precautions

Storage

Store in a dry and ventilated place to avoid prolonged moisture to ensure the service life of the product.

Protection

During use, attention should be paid to protective measures to ensure the safety of workers and passers-by at the construction site.

Packaging materials: Use waterproof and dustproof packaging materials, such as plastic films, woven bags, etc., to protect the guardrail net from the external environment.

Fixing method: Use binding tape or packaging tape to fix the guardrail net to prevent shifting or damage during transportation.

◆ Highway Fence net



Highway Fence mesh is a metal mesh product specially designed for highway traffic safety. It is used to isolate roads, guide traffic, and improve driving safety. Made of high-strength, durable materials with solid structure, good corrosion resistance and visibility, it is an effective tool for highway traffic management.

◆ Specification

Material

Galvanized steel pipe is used to ensure that the guardrail network has excellent corrosion resistance.

Diameter data

The diameter of steel pipe is generally 25mm to ensure sufficient strength and stability.

◆ Dimensional

Dimensional data

The standard height is 1.2 meters, the length can be customized according to needs, usually ranging from 2.5 meters to 4.0 meters.

Surface treatment

The steel pipe is hot-dip galvanized to increase the anti-corrosion performance of the product.

Color

Available in eye-catching blue or white for increased visibility at night.

Customization

Materials, sizes and surface treatments can be customized according to customer specific needs.

◆ Quality Control

Material selection

Select high-strength, corrosion-resistant materials that comply with relevant standards, such as hot-dip galvanized steel pipes, to ensure that the guardrail network has good corrosion resistance and durability in harsh outdoor environments.

Welding quality

Carry out quality control on the welded parts of guardrail nets to ensure that the welds are firm and uniform, and improve the stability and safety of the overall structure.

Surface treatment

Carry out effective surface anti-corrosion treatment, such as hot-dip galvanizing, plastic spraying, etc., to extend the service life of the guardrail net and reduce maintenance costs.

Dimensional accuracy

Strictly control the dimensional accuracy of the guardrail net to ensure the accuracy of each component so that it can meet the design requirements during installation.

Quality of connectors

Conduct quality inspection on connectors to ensure their strength and durability to prevent loosening or damage during use.

◆ Applicable scene

Highway guardrail nets are widely used in highways, urban roads and other scenarios to separate lanes, guide traffic and protect pedestrians.

◆ Installation method

The guardrail net is connected with connectors to form an overall guardrail system. The bracket design is flexible and adapts to different terrains and sites.

◆ Precautions

Storage

Store in a dry and ventilated place to avoid prolonged moisture to ensure the service life of the product.

Protection

During use, attention should be paid to protective measures to ensure the integrity of the highway guardrail network and ensure traffic safety.

Packaging materials: Use weather-resistant and anti-corrosion packaging materials, such as plastic films, woven bags, etc., to protect the guardrail net from the external environment.

Fixing method: Use binding tape or packaging tape to fix the guardrail net to prevent shifting or damage during transportation.

◆ Airport Fence net



Airport Fence net is a high-security metal net product specially designed for airport sites to ensure the safety and order of the airport. Made of high-strength, anti-corrosion materials with a solid structure, it can effectively isolate the airport area and prevent unauthorized personnel and vehicles from entering.

◆ Specification

Material

Stainless steel or galvanized steel is used to ensure that the guardrail net has good corrosion resistance under harsh weather conditions.

Diameter data

Steel pipe diameter is usually between 32mm and 48mm to ensure sufficient strength and stability.

◆ Dimensional

Dimensional data

The standard height is generally 2.0 meters to 3.0 meters, and the length can be customized according to the specific needs of the airport.

Surface treatment

The steel pipe is hot-dip galvanized to improve the anti-corrosion performance of the product.

Color

Usually silver or other eye-catching colors to improve visibility at night and during the day.

Customization

According to the actual needs of the airport, materials, sizes and surface treatments can be personalized.

◆ Quality Control

Material selection

Use materials with high strength, corrosion resistance, and good weather resistance, such as stainless steel, galvanized steel, etc.

Welding process

Adopt advanced welding process to ensure strong welds and stable structure.

Surface treatment

Carry out anti-corrosion and anti-rust treatment to increase the service life of the product.

Dimensional accuracy

Production is carried out strictly in accordance with the design dimensions to ensure the consistency of each guardrail unit.

Weather resistance test

Carry out weather resistance test to ensure that the product can maintain stability under different climate conditions.

Quality inspection standards

Comply with national and industry-related quality standards, such as airport safety protection standards, etc.

◆ Applicable scene

Airport guardrail nets are widely used for fencing and safety isolation at airport sites to restrict and guide the movement of people and vehicles.

◆ Installation method

Connecting pieces are used to ensure that the airport guardrail network forms an integral and stable guardrail system. The bracket design is flexible and adapts to the complex terrain of the airport site.

◆ Precautions

Storage

Store in a dry and ventilated place to avoid prolonged moisture to ensure the service life of the product.

Protection

Airport guardrails are part of airport security. During use, inspections should be strengthened to ensure that the guardrails are intact and damaged parts should be repaired in a timely manner.

Packaging materials: Use appropriate packaging materials, such as plastic film, foam board, etc., to protect the guardrail from damage.

Fixing method: Usually pallet packaging or wooden box packaging is used to ensure that the guardrail net is not squeezed and deformed during transportation.

◆ Prison Fence



Prison Fence net is a high-security metal net product specially designed for prison facilities to prevent jailbreaks and illegal intrusions. Made of high-strength, anti-corrosion materials, it has a solid structure and is anti-climbing and anti-vandal to ensure the safety and order of the prison.

◆ Specification

Material

Use high-strength stainless steel or galvanized steel to ensure the product has excellent corrosion resistance in harsh environments.

Diameter data

The diameter of the steel pipe is usually larger to increase the damage resistance of the guardrail.

◆ Dimensional

Dimensional data

The standard height is generally above 3.0 meters and can be customized according to the actual needs of the prison site.

Surface treatment

Hot-dip galvanizing process is used to improve the anti-corrosion performance of the guardrail.

Color

Typically silver or other dark colors to increase visibility at night and during the day and enhance deterrent effect.

Customization

Materials, dimensions and surface treatments can be customized according to the special requirements of the prison site.

◆ Quality Control

Material selection

Choose high-strength, anti-corrosion and corrosion-resistant materials, usually hot-dip galvanized steel or stainless steel, to ensure long-term use without rust or corrosion.

Welding process

Use high-quality welding process to ensure strong welds and stable overall structure.

Surface treatment

For anti-corrosion and anti-rust treatment to increase the service life of the product, you can choose spraying or coating.

Dimensional accuracy

Produced in strict accordance with the design dimensions to ensure the consistency of each guardrail unit to meet prison safety requirements.

Quality inspection standards

Comply with national and prison system-related quality standards to ensure that the guardrail network meets safety standards.

Anti-escape design

For prison environments, guardrails may need to have an anti-escape design to ensure that prisoners cannot escape through the guardrails.

◆ Applicable scene

Prison guardrail nets are widely used in prison walls and safety isolation to restrict and prevent prisoners from escaping.

◆ Installation method

Use professional connectors to connect to ensure that the prison guardrail network forms an overall stable fence system. The bracket is reasonably designed to adapt to various terrains of the prison site.

◆ Precautions

Storage

Store in a dry and ventilated place to avoid prolonged moisture to ensure the service life of the product.

Protection

Prison guardrails are part of prison security. During use, inspections should be strengthened to ensure that the guardrails are intact and damaged parts should be repaired in a timely manner.

Packaging materials: Use sturdy packaging materials, such as wooden boxes or metal pallets, to protect the guardrail from damage.

Fixing method: Professional packaging is usually used to ensure that the product is not squeezed, deformed or scratched during transportation.

◆ Municipal Fence



Municipal Fence is a protective facility used in urban roads, public places and other places. By using high-quality metal materials and advanced manufacturing processes, it is strong, stable and beautiful, providing effective protection for urban traffic and people flow.

◆ Specification

Material

Galvanized steel is often used, which has good anti-corrosion properties.

Diameter data

Generally, metal materials of different diameters can be customized according to design requirements.

◆ Dimensional

Dimensional data

Common dimensions include height, length, etc., which can also be customized according to actual needs.

Surface treatment

Usually anti-corrosion treatment, such as galvanizing or hot-dip galvanizing.

Color

Common colors include silver, black, etc., which can also be customized according to customer needs.

Customization

Different materials, sizes and surface treatments can be customized according to specific needs to meet the use requirements of different scenarios.

◆ Quality Control

Material selection

Choose high-quality materials that comply with relevant national standards, usually galvanized steel or stainless steel, to ensure that the product has good corrosion resistance and strength.

Welding process

Use high-quality welding process to ensure firm solder joints and stable overall structure.

Surface treatment

Anti-corrosion and anti-rust treatment, usually hot-dip galvanizing, plastic spraying, etc., to increase the service life of the product.

Dimensional accuracy

Produced in strict accordance with the design dimensions to ensure the dimensional consistency of each guardrail unit.

Safety standards

Comply with national and related safety standards for guardrail products to ensure that municipal guardrails meet safety requirements during use.

◆ Applicable scene

Municipal guardrails are suitable for urban roads, sidewalks, squares and other public places to delineate areas, guide traffic, and protect pedestrian safety.

◆ Installation method

Municipal guardrails are flexible to install and can be fixed or combined according to specific site and design requirements to ensure a stable and solid structure.

◆ Precautions

Storage

Store in a dry and ventilated place to avoid prolonged moisture.

Protection

Avoid collision or external impact, and perform regular inspection and maintenance.

Packaging materials: Use sturdy packaging materials, usually wooden boxes or metal pallets, to ensure that the municipal guardrail is not damaged during transportation.

Fixing method: Use professional packaging method to ensure that the product will not be squeezed, deformed or scratched during transportation.

◆ Railway Fence net



Railway Fence is an important facility used to protect the safety of railway lines. Made from high quality hot-dip galvanized steel for superior corrosion resistance and durability. The guardrail is reasonably designed and has a solid structure, which can effectively isolate railway lines and ensure safe and smooth train operation.

◆ Specification

Material

Hot-dip galvanized steel.

Diameter data

Standard diameter, such as 8mm, 10mm, can also be customized according to design requirements.

◆ Dimensional data

Height

Usually between 1.2m and 2.5m, can be customized according to railway line requirements.

Length

The standard length is generally between 2m and 4m, and can also be customized according to needs.

Surface treatment

Hot-dip galvanizing process is used to improve the anti-corrosion performance of the product.

Color

Usually silver, it can also be customized according to customer needs.

Customization

Different materials, sizes and surface treatments can be customized according to specific needs.

◆ Quality Control

Material selection

Choose high-strength, corrosion-resistant materials that comply with relevant national standards, usually hot-dip galvanized steel, to ensure a long service life of the product.

Welding process

Use high-quality welding process to ensure that the solder joints are firm, the overall structure is stable, and can withstand external impacts.

Surface treatment

Carry out anti-corrosion and anti-rust treatment. Common surface treatment methods include hot-dip galvanizing, plastic spraying, etc. to improve the corrosion resistance of the product.

Dimensional accuracy

Produced in strict accordance with the design dimensions to ensure the dimensional consistency of each guardrail unit to facilitate construction and installation.

Safety standards

Comply with relevant national and railway industry safety standards to ensure that railway guardrails meet safety requirements during use.

◆ Applicable scene

Railway guardrails are suitable for all types of railway lines, including high-speed railways, normal-speed railways, etc., and play the role of effective isolation and protection to ensure the normal operation of railway traffic.

◆ Installation method

Railway guardrails are easy to install, and fixed bolts or other fixing methods can be used according to specific requirements to ensure firmness and reliability.

◆ Precautions

Storage

Store in a dry and ventilated place to avoid prolonged moisture.

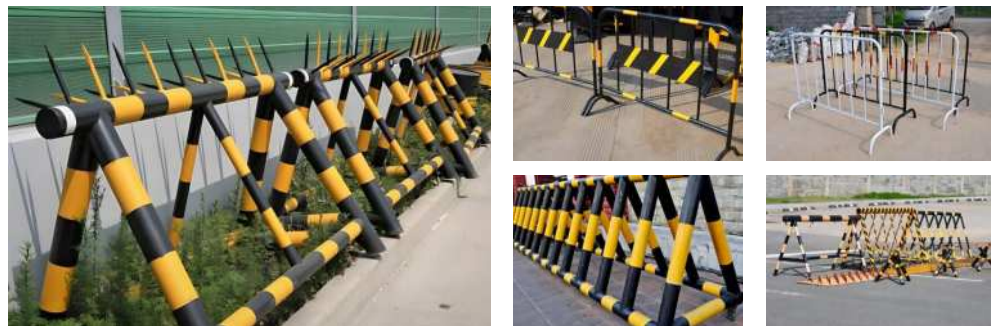
Protection

During use, prevent external collisions and ensure that the guardrails are intact.

Packaging materials: Use sturdy packaging materials, usually wooden boxes or metal pallets, to prevent crushing or damage during transportation.

Fixing method: Use professional packaging methods to reasonably layer and fix the railway guardrails to ensure stability during transportation.

◆ Iron horse



Iron horse Fence is a sturdy and durable safety protection facility, usually used in traffic roads, parks, construction sites and other places. Its unique design and solid structure not only provide effective protection, but also have good visual transparency without affecting the overall beauty of the site.

◆ Specification

Material

High-quality hot-dip galvanized steel pipe with corrosion resistance.

Diameter data

Steel pipe diameters are usually standard sizes, such as 48mm, 60mm, etc., and can be customized according to needs.

◆ Dimensional

Dimensional data

The standard size is 2.5m × 1.2m, which can also be customized according to customer needs.

Surface treatment

Hot-dip galvanizing to enhance the corrosion resistance of the product.

Color

The iron horse guardrail is usually silver, and can also be painted according to customer needs.

Customization

Provide personalized customization services in materials, sizes, and surface treatments to meet the needs of different customers.

◆ Quality Control

Material selection

Choose high-strength, corrosion-resistant steel or aluminum to ensure the product has good structural strength and durability.

Welding process

Adopt advanced welding process to ensure that the solder joints are firm, the overall structure is stable, and can withstand external impact.

Surface treatment

Carry out anti-corrosion and anti-rust treatment, using plastic spraying, hot-dip galvanizing and other methods to improve the corrosion resistance of the product.

Dimensional accuracy

Production is carried out strictly in accordance with the design dimensions to ensure the dimensional consistency of each iron horse guardrail unit to facilitate construction and installation.

Safety standards

Comply with relevant national and transportation industry safety standards to ensure that the iron horse guardrail meets safety requirements during use.

◆ Applicable scene

It is suitable for scenes that require protection such as traffic roads, parks, construction sites, and public places.

◆ Installation method

Easy to install, usually via bolts, the fence can be set up quickly.

It can be fixed through anchor bolts or concrete foundation to improve overall stability.

◆ Precautions

Storage

It is recommended to store in a dry and ventilated place to avoid long-term exposure of the product to moisture.

Protection

During use, pay attention to prevent collision and damage, and perform timely maintenance.

Packaging materials: Use sturdy packaging materials, usually wooden boxes or metal pallets, to prevent crushing or damage during transportation.

Fixing method: Use professional packaging method to reasonably layer and fix the iron horse guardrail to ensure stability during transportation.



Steel Mesh series

Including Hardware cloth, Welded mesh, Construction steel mesh, Cold rolled ribbed steel mesh, Mining steel mesh...

Welcome to communicate with us at any time!

◆ 01. Hardware cloth

46—47



◆ 02. Welded mesh

48—49



◆ 03. Construction steel mesh

50—51



◆ 04. Cold rolled ribbed steel mesh

52—53



◆ 05. Mining steel mesh

54—55



◆ 06. Threaded steel mesh

56—57



◆ 07. Bridge deck steel mesh

58—59



◆ 08. Hot rolled ribbed steel mesh

60—61



◆ 09. Reinforced mesh for tunnels

62—63



◆ 10. Brick belt net

64—65



WeChat:+8613373483555

Telephone:+8613373483555

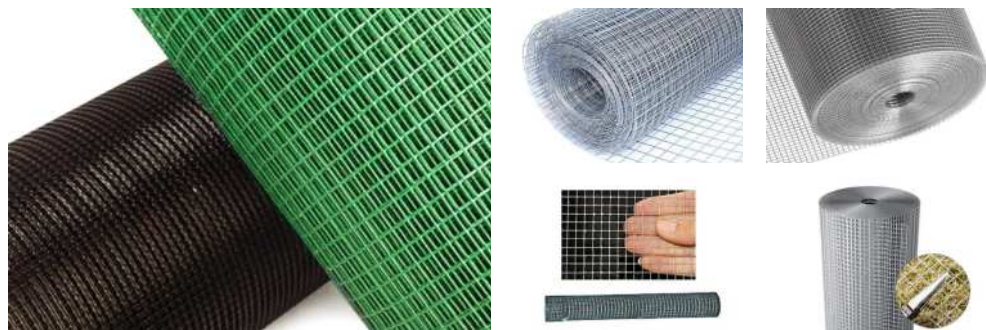
Address:No. 9—1, Shuguang Street, West District, Raoyang County Economic Development Zone, Hengshui City, Hebei Province

Email:info@hl-metalmesh.com

WhatsApp:+8619932376137

Website:hl-metalmesh.com

◆ Hardware cloth



Hardware cloth is also called welded wire mesh, which has a flat and uniform surface, a solid structure and good integrity. Welded wire mesh has the best corrosion resistance among all wire mesh products, and is also the most widely used wire mesh, widely used in different fields. Welded wire mesh can be galvanized, PVC coated or stainless steel welded wire mesh.

◆ Specification

Material

Materials such as low carbon steel wire (Q195, Q235) or hot rolled steel (HPB300, HRB400) are often used.

Diameter

Diameter size range is 2mm–12mm.

◆ Dimensional

Grid size

Customized according to customer needs, square or rectangular grids can be selected. Common sizes are 30*30mm, 50mm x 50mm, etc.

Grid thickness

Customizable according to needs, usually in millimeters, such as 1mm, 1.5mm, 2mm, 3mm, etc.

Surface treatment

Galvanizing, PVC and other processes to improve the anti-corrosion performance of the product.

Color

Silver, black, etc., can also be customized according to customer needs.

Customization

Hardware cloths of different specifications and shapes can be customized according to customer needs.

◆ Quality Control

Material testing

Quality inspection of the welding materials used to ensure compliance with relevant standards and ensure the strength and durability of the hardware cloth.

Welding process control

Strictly control the welding process, including welding temperature, welding time, welding pressure and other parameters to ensure firm and uniform welding and avoid welding defects.

Dimension accuracy

Inspect the size of the welding mesh to ensure that the size is accurate and meets the design requirements.

Surface treatment

Depending on the purpose of the hardware cloth, surface treatment such as rust prevention or anti-corrosion treatment may be required to ensure that the product has good durability in different environments.

◆ Applicable scene

Hardware cloth is widely used in construction projects, garden fences, agricultural breeding, industrial equipment protection and other fields. Its firmness and breathability make it an ideal screening, isolation and protection material.

◆ Installation method

Hardware cloth is easy to install and can be easily installed according to specific uses and scenarios.

◆ Precautions

Storage

Store in a dry and ventilated place to avoid long-term moisture.

Installation

Please install correctly according to the installation instructions to ensure stability.

Use environment

Choose the appropriate hardware cloth specifications and materials according to the actual use environment.

Packaging materials: Use sturdy packaging materials such as wooden boxes or steel frames on the outer layer to prevent the hardware cloth from being deformed and damaged due to extrusion and collision during transportation.

Protection measures: Wrap the product with plastic wrap to reduce the impact during transportation and ensure that the product is intact.

◆ Welded mesh



Welded mesh is a multi-purpose metal mesh product made from high-quality anti-corrosion and durable materials through an electric welding process. It has a solid structure and neat mesh, and is widely used in construction, agriculture, industry and other fields. Welded mesh has superior corrosion resistance and strength and is suitable for various environments.

◆ Specification

Material

Materials such as low carbon steel wire (Q195, Q235) or hot rolled steel (HPB300, HRB400) are often used.

Diameter

Diameter size range is 2mm–12mm.

◆ Dimensional

Grid size

Customized according to customer needs, you can choose square grid or rectangular grid. Common sizes include 50mm x 50mm, 100mm x 100mm, etc.

Mesh thickness

Can be customized according to requirements, usually in millimeters, such as 2mm, 3mm, etc.

Surface treatment

Galvanizing, hot-dip galvanizing and other processes to improve the anti-corrosion performance of the product.

Color

Silver, black, etc., can also be customized according to customer needs.

Customization

Welded mesh of different specifications and shapes can be customized according to customer needs.

◆ Quality Control

Material testing

Conduct quality testing on the welding materials used to ensure compliance with relevant standards and ensure the strength and durability of the welded mesh.

Welding process control

Strictly control the welding process, including parameters such as welding temperature, welding time and welding pressure, to ensure firm and uniform welding and avoid welding defects.

Dimension accuracy

The size of the welded mesh is inspected to ensure that the size is accurate and meets the design requirements.

Surface treatment

Depending on the use of welded mesh, surface treatment may be required, such as anti-rust treatment or anti-corrosion treatment, to ensure that the product has good durability in different environments.

◆ Applicable scene

Welded mesh is widely used in construction projects, garden fences, agricultural breeding, industrial equipment protection and other fields. Its robustness and permeability make it an ideal material for screening, isolation and protection.

◆ Installation method

Welded mesh is easy to install and can be fixed with brackets, welded, suspended or other customized methods according to specific uses and scene needs.

◆ Precautions

Storage

Store in a dry and ventilated place to avoid prolonged moisture.

Installation

Please install correctly according to the installation instructions to ensure stability.

Use environment

Choose appropriate welded mesh specifications and materials according to the actual usage environment.

Packaging materials: Use sturdy packaging materials, such as wooden boxes or steel frames, to prevent the welded mesh from being deformed or damaged by extrusion or collision during transportation.

Protection measures: Add an appropriate amount of cushioning materials, such as foam, air bags, etc., to the packaging to reduce the impact during transportation and ensure that the product is intact.

◆ Construction steel mesh



Construction steel mesh is a metal mesh product made of high-strength, corrosion-resistant metal materials and advanced electric welding technology. It has the characteristics of solid structure and neat mesh, and is widely used in the field of construction engineering. The main uses include reinforcing concrete structures, protective walls, etc., to provide effective support and protection for construction projects.

◆ Specification

Material

Materials such as low carbon steel wire (Q195, Q235) or hot rolled steel (HPB300, HRB400) are often used.

Diameter

Diameter size range is 2mm–12mm.

◆ Dimensional

Grid size

Customized according to customer needs, you can choose square grid or rectangular grid. Common sizes include 50mm x 50mm, 100mm x 100mm, etc.

Mesh thickness

Can be customized according to requirements, usually in millimeters, such as 2mm, 3mm, etc.

Surface treatment

Galvanizing, hot-dip galvanizing and other processes to improve the anti-corrosion performance of the product.

Color

Silver, black, etc., can also be customized according to customer needs.

Customization

Welded mesh of different specifications and shapes can be customized according to customer needs.

◆ Quality Control

Material testing

Conduct quality testing on the welding materials used to ensure compliance with relevant standards and ensure the strength and durability of the welded mesh.

Welding process control

Strictly control the welding process, including parameters such as welding temperature, welding time and welding pressure, to ensure firm and uniform welding and avoid welding defects.

Dimension accuracy

The size of the welded mesh is inspected to ensure that the size is accurate and meets the design requirements.

Surface treatment

Depending on the use of welded mesh, surface treatment may be required, such as anti-rust treatment or anti-corrosion treatment, to ensure that the product has good durability in different environments.

◆ Applicable scene

Welded mesh is widely used in construction projects, garden fences, agricultural breeding, industrial equipment protection and other fields. Its robustness and permeability make it an ideal material for screening, isolation and protection.

◆ Installation method

Welded mesh is easy to install and can be fixed with brackets, welded, suspended or other customized methods according to specific uses and scene needs.

◆ Precautions

Storage

Store in a dry and ventilated place to avoid prolonged moisture.

Installation

Please install correctly according to the installation instructions to ensure stability.

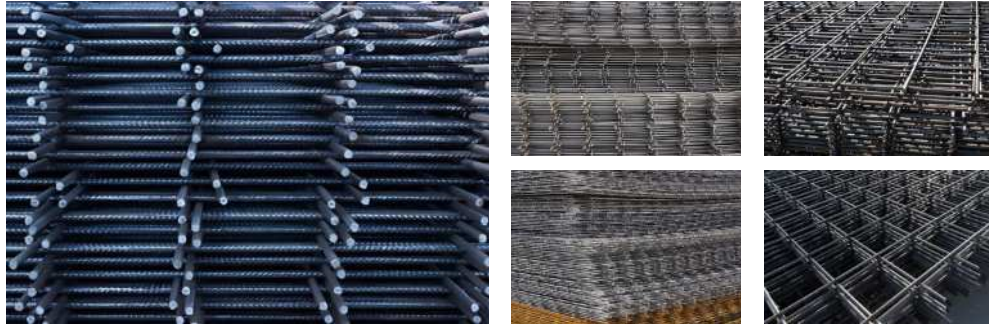
Use environment

Choose appropriate welded mesh specifications and materials according to the actual usage environment.

Packaging materials: Use sturdy packaging materials, such as wooden boxes or steel frames, to prevent the welded mesh from being deformed or damaged by extrusion or collision during transportation.

Protection measures: Add an appropriate amount of cushioning materials, such as foam, air bags, etc., to the packaging to reduce the impact during transportation and ensure that the product is intact.

◆ Cold rolled ribbed steel mesh



Cold-rolled ribbed steel mesh is a high-strength metal mesh product specially designed for building concrete reinforcement. It adopts cold rolling process and has ribbed design, which can provide better adhesion and enhance the bonding force between concrete and steel mesh. Its structure is strong and suitable for a variety of construction projects, providing strong support for concrete structures.

◆ Specification

Material

Materials such as low carbon steel wire (Q195, Q235) or hot rolled steel (HPB300, HRB400) are often used.

Diameter

Diameter size range is 2mm–12mm.

◆ Dimensional

Size

Can be customized according to specific needs, including square grid or rectangular grid, typical sizes are 50mm x 50mm, 100mm x 100mm, etc.

Surface treatment

Use galvanizing, hot-dip galvanizing and other processes to improve the anti-corrosion performance of the product.

Color

Supports a variety of color options and can be customized according to customer needs.

Customization

Materials, sizes, and surface treatments can be customized according to specific needs.

◆ Quality Control

Material testing

Strict quality testing is conducted on the steel used to ensure that it meets relevant standards and has sufficient strength and corrosion resistance to adapt to the complex working environment of the mine.

Welding process control

Use advanced welding processes to ensure firm and uniform welding, and improve overall strength and stability to adapt to possible impacts and vibrations in mines.

Dimension accuracy

Conduct dimensional inspection of mining steel mesh to ensure that the grid spacing, grid size, etc. comply with the design specifications to meet the needs of mining equipment.

Surface treatment

Anti-corrosion treatment is carried out to improve the corrosion resistance of the steel mesh and extend its service life in humid and corrosive mining environments.

Bending performance

Test the bending performance of the mining steel mesh to ensure that it has sufficient flexibility to adapt to the complex terrain that may exist in the mine.

◆ Applicable scene

Mining steel mesh is widely used in coal mine tunnel support, mine surrounding rock reinforcement, equipment protection and other scenarios. Its high strength and wear resistance make it an indispensable support material in mining projects.

◆ Installation method

Mining steel mesh is flexible to install and can be welded, tied or bracketed according to specific project needs to ensure that the structure remains strong under various conditions.

◆ Precautions

Storage

Please store in a dry and ventilated place to avoid prolonged moisture.

Protection

According to the characteristics of the mining environment, take corresponding protective measures to ensure the service life of the product.

Packaging materials: Use sturdy packaging materials, such as wooden pallets or steel frames, to protect the steel mesh from extrusion, collision, etc. during transportation.

Protection measures: Add an appropriate amount of cushioning materials, such as foam, air bags, etc., to the packaging to reduce the impact during transportation and ensure that the product is intact.

◆ Mining steel mesh



Mining steel mesh is a high-strength, wear-resistant metal mesh product specially designed for the mining industry. It is made of high-quality anti-corrosion and durable materials and refined through electric welding process. Its solid structure and neat mesh provide excellent support and protection for mine tunnel support and equipment protection.

◆ Specification

Material

Materials such as low carbon steel wire (Q195, Q235) or hot rolled steel (HPB300, HRB400) are often used.

Diameter

Diameter size range is 2mm-12mm.

◆ Dimensional

Size

Can be customized according to specific needs, including square grid or rectangular grid, typical sizes are 50mm x 50mm, 100mm x 100mm, etc.

Surface treatment

Use galvanizing, hot-dip galvanizing and other processes to improve the anti-corrosion performance of the product.

Color

Supports a variety of color options and can be customized according to customer needs.

Customization

Materials, sizes, and surface treatments can be customized according to specific needs.

◆ Quality Control

Material testing

Strict quality testing is conducted on the steel used to ensure that it meets relevant standards and has sufficient strength and corrosion resistance to adapt to the complex working environment of the mine.

Welding process control

Use advanced welding processes to ensure firm and uniform welding, and improve overall strength and stability to adapt to possible impacts and vibrations in mines.

Dimension accuracy

Conduct dimensional inspection of mining steel mesh to ensure that the grid spacing, grid size, etc. comply with the design specifications to meet the needs of mining equipment.

Surface treatment

Anti-corrosion treatment is carried out to improve the corrosion resistance of the steel mesh and extend its service life in humid and corrosive mining environments.

Bending performance

Test the bending performance of the mining steel mesh to ensure that it has sufficient flexibility to adapt to the complex terrain that may exist in the mine.

◆ Applicable scene

Mining steel mesh is widely used in coal mine tunnel support, mine surrounding rock reinforcement, equipment protection and other scenarios. Its high strength and wear resistance make it an indispensable support material in mining projects.

◆ Installation method

Mining steel mesh is flexible to install and can be welded, tied or bracketed according to specific project needs to ensure that the structure remains strong under various conditions.

◆ Precautions

Storage

Please store in a dry and ventilated place to avoid prolonged moisture.moisture.

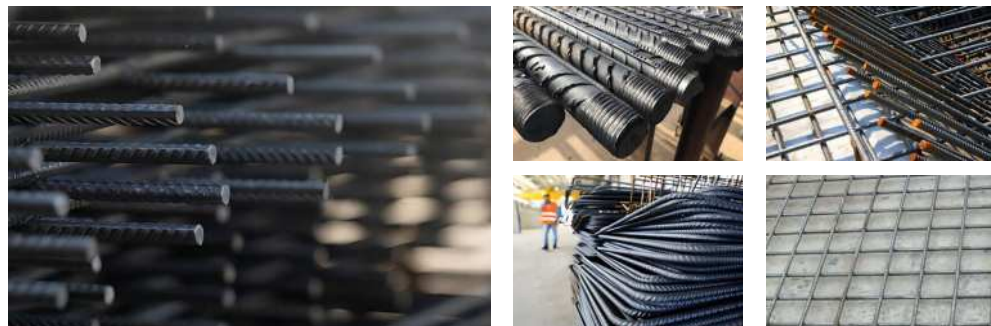
Protection

According to the characteristics of the mining environment, take corresponding protective measures to ensure the service life of the product.

Packaging materials: Use sturdy packaging materials, such as wooden pallets or steel frames, to protect the steel mesh from extrusion, collision, etc. during transportation.

Protection measures: Add an appropriate amount of cushioning materials, such as foam, air bags, etc., to the packaging to reduce the impact during transportation and ensure that the product is intact.

◆ Threaded steel mesh



Threaded steel mesh is a high-strength, durable metal mesh product made of high-quality threaded steel bars through advanced welding processes. It has a solid structure and uniform mesh, and is widely used in construction projects, infrastructure and other fields. Threaded steel mesh has superior tensile strength and corrosion resistance and is suitable for various harsh environmental conditions.

◆ Specification

Material

Materials such as low carbon steel wire (Q195, Q235) or hot rolled steel (HPB300, HRB400) are often used.

Diameter

Diameter size range is 2mm–12mm.

◆ Dimensional

Size

Threaded steel mesh of different specifications and sizes can be customized according to project needs.

Surface treatment

Common surface treatments include galvanizing, hot-dip galvanizing, etc. to improve the corrosion resistance of the product.

Color

Usually silver, but can also be customized according to customer needs.

Customization

Materials, sizes and surface treatments can be personalized to meet specific needs.

◆ Quality Control

Material testing

Conduct quality testing on the rebar used to ensure that it meets relevant standards and has sufficient strength and corrosion resistance.

Thread processing

Control the shape and size of threads to ensure they comply with design specifications and improve the tensile properties and bonding properties of the steel mesh.

Welding process control

Use high-quality welding process to ensure that the solder joints are firm and uniform, and improve the overall strength and stability.

Dimension accuracy

Conduct dimensional inspection of the threaded steel mesh to ensure that the grid spacing, grid size, etc. comply with the design specifications.

Surface treatment

Carry out anti-corrosion treatment to improve the corrosion resistance of the threaded steel mesh and extend its service life.

◆ Applicable scene

Threaded steel mesh is widely used in engineering fields such as concrete structure reinforcement, foundation reinforcement, road and bridge construction, etc. Its high strength and durability make it ideal for structural reinforcement of buildings.

◆ Installation method

Threaded steel mesh is flexible to install and can be welded, tied or bracketed according to specific project requirements to ensure a stable and reliable structure.

◆ Precautions

Storage

Store in a dry and ventilated place to avoid prolonged moisture.

Protection

During use, pay attention to protective measures to avoid damage.

Packaging materials: Use sturdy packaging materials, such as wooden pallets or steel frames, to protect the rebar mesh from extrusion, collision, etc. during transportation.

Protection measures: Add an appropriate amount of cushioning materials, such as foam, air bags, etc., to the packaging to reduce the impact during transportation and ensure that the product is intact.

◆ Bridge deck steel mesh



Bridge deck steel mesh is a high-strength metal mesh product specially designed for bridge engineering. It is made of high-quality steel and made through exquisite welding technology. It has reasonable design and solid structure. It is mainly used to strengthen and support the bridge structure and improve the load-bearing capacity and durability of the bridge deck.

◆ Specification

Material

Materials such as low carbon steel wire (Q195, Q235) or hot rolled steel (HPB300, HRB400) are often used.

Diameter

Diameter size range is 2mm–12mm.

◆ Dimensional

Dimensions

Can be customized to the bridge's specifications and design requirements to ensure a perfect fit.

Surface treatment

Common surface treatment methods include galvanizing, hot-dip galvanizing, etc. to improve the corrosion resistance of the product.

Color

Usually silver, but can also be customized according to customer needs.

Customization

Materials, sizes and surface treatments can be customized according to specific needs to meet the requirements of different projects.

◆ Quality Control

Material testing

Conduct quality testing on the steel used to ensure that it meets relevant standards and has sufficient strength and corrosion resistance.

Grid welding

Control the welding quality of the grid to ensure firm and uniform welding and improve overall strength and stability.

Dimensional accuracy

Conduct dimensional inspection of the bridge deck steel mesh to ensure that the grid spacing, grid size, etc. comply with the design specifications.

Surface treatment

Anti-corrosion treatment is carried out to improve the corrosion resistance of the bridge deck steel mesh and extend its service life.

Curvature detection

Detect the curvature of the bridge deck steel mesh to ensure that it meets the design requirements to adapt to the shape and needs of the bridge structure.

◆ Applicable scene

Bridge deck steel mesh is widely used in various bridge projects, including highway bridges, urban road bridges, etc. Its high strength and stability make it ideal for structural reinforcement and support of bridges.

◆ Installation method

The bridge deck steel mesh is easy to install and can be closely connected to the bridge structure through welding or other fixing methods to ensure the overall solidity.

◆ Precautions

Storage

Store in a dry and ventilated place to avoid prolonged moisture.

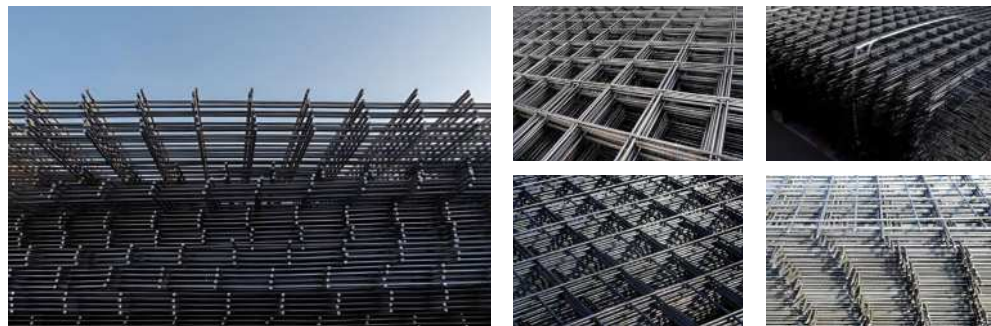
Protection

During construction and use, pay attention to the protection of the bridge deck steel mesh to avoid damage.

Packaging materials: Use sturdy packaging materials, such as wooden pallets or steel frames, to protect the bridge deck steel mesh from extrusion, collision, etc. during transportation.

Protection measures: Add an appropriate amount of cushioning materials, such as foam, air bags, etc., to the packaging to reduce the impact during transportation and ensure that the product is intact.

◆ Hot rolled ribbed steel mesh



Hot-rolled ribbed steel mesh is a metal mesh product made of high-strength hot-rolled steel bars. Its characteristic is that the surface of the steel bars maintains a natural metallic luster and is processed through advanced hot rolling technology. This mesh structure has good tensile strength and corrosion resistance and is suitable for a variety of construction and foundation projects.

◆ Specification

Material

Materials such as low carbon steel wire (Q195, Q235) or hot rolled steel (HPB300, HRB400) are often used.

Diameter

Diameter size range is 2mm-12mm.

◆ Dimensional

Size

Can be customized according to the specifications and design requirements of the building structure.

Square grid

50mm x 50mm, 100mm x 100mm, etc.

Rectangular grid

50mm x 100mm, 75mm x 150mm, etc.

Surface treatment

Hot rolling process is used to maintain the natural metallic luster on the surface of the steel bars.

Color

Silver natural metallic luster, no additional coloring required.

Customization

Materials, sizes and surface treatments can be customized according to specific needs to meet the requirements of different projects.

◆ Quality Control

Raw material inspection

Strict raw material inspection is carried out on the steel used to ensure that it meets relevant standards and has sufficient strength and toughness.

Production process control

Control the production process of hot-rolled ribbed steel mesh to ensure the stability of the forming process, heating temperature, rolling pressure and other parameters to ensure the consistency of product quality.

Dimensional accuracy

Carry out dimensional testing to ensure that the size of the hot-rolled ribbed steel mesh meets the design requirements and ensure the accuracy and reliability of the product.

Rib processing

Process the ribs of the steel mesh to ensure the consistency of the shape and size of the ribs and improve the tensile performance and bonding performance of the steel mesh.

Surface quality

Inspect the surface of the hot-rolled ribbed steel mesh to ensure that the surface is smooth, free of cracks, rust and other defects, and ensure the beauty and service life of the product.

◆ Applicable scene

Hot-rolled ribbed steel mesh is widely used in construction and basic engineering fields, such as concrete structure reinforcement, wall protection, etc. Its high strength and customizability make it ideal for structural reinforcement in buildings.

◆ Installation method

Hot-rolled ribbed steel mesh is flexible to install and can be welded, tied or bracketed according to specific project requirements to ensure a strong and reliable structure.

◆ Precautions

Storage

Storage: Store in a dry and ventilated place to avoid prolonged moisture.

Installation

Please install it correctly according to the project requirements to ensure structural stability.

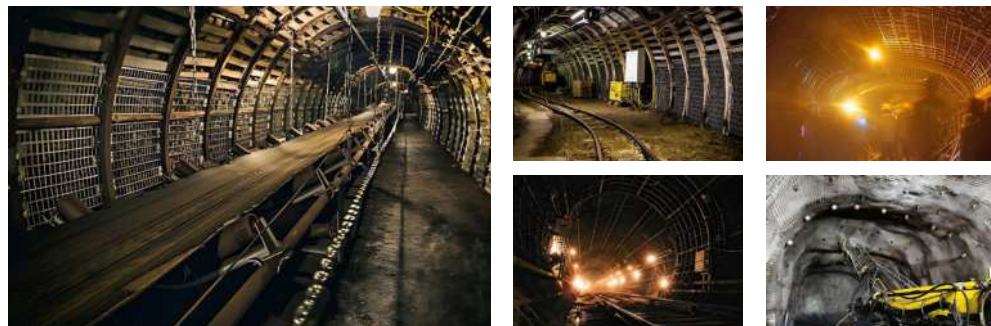
Usage environment

Choose the appropriate specifications and materials of hot-rolled ribbed steel mesh according to the actual usage environment.

Packaging materials: Use waterproof and rust-proof packaging materials, such as wooden pallets, plastic films, etc., to protect the steel mesh from the external environment during transportation.

Protection measures: During the packaging process, use appropriate fixing methods, such as bundling with steel straps, to prevent the product from moving and being damaged during transportation.

◆ Reinforced mesh for tunnels



Tunnel steel mesh is a metal mesh product specially designed for tunnel projects. It is made of high-strength, corrosion-resistant steel materials. Its unique mesh structure provides excellent tensile strength and durability and is suitable for tunnel support, protection and other projects.

◆ Specification

Material

Materials such as low carbon steel wire (Q195, Q235) or hot rolled steel (HPB300, HRB400) are often used.

Diameter

Diameter size range is 2mm–12mm.

◆ Dimensional

Dimensional data

Customized according to the specifications and design requirements of the tunnel structure, which can include square grids (such as 50mm x 50mm, 100mm x 100mm, etc.) and rectangular grids (such as 50mm x 100mm, 75mm x 150mm, etc.).

Surface treatment

Anti-corrosion treatment is used to enhance the corrosion resistance of the product.

Color

In most cases, natural metallic color after anti-corrosion treatment is used.

Customization

Materials, sizes and surface treatments can be customized according to specific needs to meet the requirements of different tunnel projects.

◆ Quality Control

Raw material inspection

Conduct a comprehensive inspection of the raw materials used to manufacture the steel mesh for tunnels to ensure that the steel meets relevant standards and has sufficient strength and corrosion resistance.

Production process control

Control the production process of steel mesh for tunnels, including welding process, cold galvanizing process, etc., to ensure the stability and durability of the product.

Dimensional inspection

Carry out accurate inspection of the dimensions of the steel mesh used in tunnels to ensure that the product meets the design and specification requirements to meet the special needs of tunnel projects.

Surface treatment quality

Tunnel steel mesh usually requires anti-corrosion treatment to ensure uniform surface coating and firm adhesion to improve the anti-corrosion performance of the product.

Solder joint quality

Test the solder joints to ensure that the solder joints are firm and uniform, not prone to cracks and breaks, and improve the overall strength of the product.

◆ Applicable scene

Tunnel steel mesh is widely used in tunnel projects, mainly for support, protection and other projects. Its high strength and mesh structure make it an important support material in tunnel projects.

◆ Installation method

The tunnel steel mesh is flexible to install and can be welded, tied or bracketed according to specific project requirements to ensure a strong and reliable structure.

◆ Precautions

Storage

Store in a dry and ventilated place to avoid prolonged moisture.

Protection

Pay attention to the protection of the product during use and installation to prevent damage that affects the service life.

Packaging materials: Use waterproof and anti-corrosion packaging materials, such as plastic films, wooden pallets, etc., to prevent products from moisture and corrosion during transportation.

Fixing method: Use appropriate fixing methods, such as bundling the product with steel straps or binding straps, to ensure that the product does not shift or be damaged during transportation.

◆ Brick belt net



Brick belt mesh is a high-strength metal mesh product specially designed for construction projects. Made of high-quality high-strength anti-corrosion materials, such as galvanized steel wire or stainless steel wire, and made through advanced electric welding technology. Its features include a sturdy structure and neat mesh, making it suitable for a variety of construction applications and providing a reliable solution for wall reinforcement and support.

◆ Specification

Material

Materials such as low carbon steel wire (Q195, Q235) or hot rolled steel (HPB300, HRB400) are often used.

Diameter

Diameter size range is 2mm-12mm.

◆ size

Grid size

square grid (such as 50mm x 50mm, 100mm x 100mm, etc.) and rectangular grid (such as 50mm x 100mm, 75mm x 150mm, etc.).

Mesh thickness

Can be customized according to project requirements, usually in millimeters, such as 2mm, 3mm, etc.

Surface treatment

Use galvanizing, hot-dip galvanizing and other processes for surface treatment to improve the anti-corrosion performance of the product.

Color

Generally, it is a natural metallic color after anti-corrosion treatment. It can also be customized according to customer needs.

Customization

Materials, sizes, and surface treatments can be customized according to specific needs to meet the requirements of different projects.

◆ Quality Control

Raw material inspection

Conduct a comprehensive inspection of the raw materials used to manufacture brick belt nets to ensure that the materials of the brick belt nets meet relevant standards and have sufficient strength and corrosion resistance.

Production process control

Control the production process of brick belt mesh, including welding process, hot-dip galvanizing process, etc., to ensure the stability and durability of the product.

Dimensional inspection

Carry out accurate inspection of the dimensions of the brick belt mesh to ensure that the product meets the design and specification requirements to adapt to the special needs of the masonry project.

Solder joint quality

Test the solder joints to ensure that the solder joints are firm and uniform, not prone to cracks and breaks, and improve the overall strength of the product.

Solder joint quality

Test the solder joints to ensure that the solder joints are firm and uniform, not prone to cracks and breaks, and improve the overall strength of the product.

Surface treatment quality

Brick belt mesh usually requires anti-corrosion treatment to ensure uniform surface coating and firm adhesion, and improve the anti-corrosion performance of the product.

◆ Applicable scene

Brick belt mesh is widely used in construction projects, especially for wall reinforcement and support. Its high strength and corrosion resistance make it ideal for structural strengthening of buildings.

◆ Installation method

The installation of brick belt mesh is flexible and can be welded, fixed or otherwise customized according to specific project requirements to ensure a strong and reliable structure.

◆ Precautions

Storage

Store in a dry and ventilated place to avoid prolonged moisture.

Protection

Pay attention to protection during use to avoid damage.

Packaging materials: Use waterproof and anti-corrosion packaging materials, such as plastic films, wooden pallets, etc., to prevent products from moisture and corrosion during transportation.

Fixing method: Use appropriate fixing methods, such as bundling the product with steel straps or binding straps, to ensure that the product does not shift or be damaged during transportation.



Steel grating series

Including Stainless steel grating, Composite steel grating, Steel grating, Municipal steel grating.

Welcome to communicate with us at any time!

◆ 01. Stainless steel grating

68-69



◆ 02. Composite steel grating

70-71



◆ 03. Steel grating

72-73



◆ 04. Municipal steel grating

74-75



WeChat:+8613373483555



Telephone:+8613373483555



Address:No. 9-1, Shuguang Street, West District, Raoyang County Economic Development Zone, Hengshui City, Hebei Province



Email:info@hl-metalmesh.com



WhatsApp:+8619932376137



Website:hl-metalmesh.com

◆ Stainless steel grating



Stainless steel grating is a multi-functional building material, usually made of stainless steel, with corrosion resistance, pressure resistance, anti-slip and other characteristics. It is widely used in industry, construction, chemical industry and other fields. It can be used on stairs, platforms, passages and other places to provide a stable walking surface.

◆ Specification

Material

Made of stainless steel with excellent corrosion resistance.

Diameter data

None applicable, can be customized according to actual needs.

◆ Dimensional

Dimensional data

The common size is 1000mm × 6000mm, which can also be customized according to customer requirements.

Surface treatment

You can choose different surface treatments such as natural bright, sandblasting, and pickling.

Color

Original color of stainless steel, bright surface is silvery white.

Customization

Materials, sizes, and surface treatments can be customized according to specific needs.

◆ Quality Control

Material selection

Stainless steel is strictly selected to ensure its corrosion resistance and weather resistance

Manufacturing process

Adopt advanced manufacturing processes, such as precise welding and cutting technology, to ensure the quality and stability of each steel grating.

Dimensional accuracy

Conduct dimensional accuracy testing to ensure that each steel grating meets the specifications and adapts to the needs of different scenarios.

Surface treatment

Surface treatment, usually a bright surface of stainless steel, to improve its corrosion resistance.

Durability test

Conduct durability tests to ensure that the stainless steel grating can still maintain stability and performance when used in different environments.

◆ Applicable scene

Mainly used in industrial plants, chemical plant areas, stairs, platforms, passages and other places where corrosion resistance, pressure resistance and anti-slip are required.

◆ Installation method

Stainless steel grating is easy to install and can be fixed in the required position by bolts or welding.

◆ Precautions

Storage

It needs to be stored in a dry and ventilated place before installation to avoid prolonged moisture.

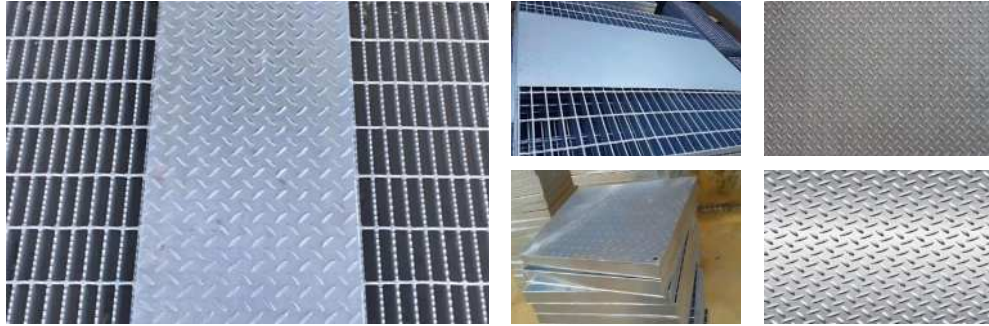
Protection

Pay attention to protecting the product surface during installation to prevent scratches and damage.

Packaging materials: Use waterproof and anti-corrosion packaging materials, such as plastic films, woven bags, etc., to protect the products from the external environment.

Fixing method: Stack the stainless steel gratings neatly to avoid extrusion and deformation. Strengthen support at key locations to reduce damage during transportation.

◆ Composite steel grating



Composite steel grating is a building material with a unique structure, usually made of a combination of stainless steel and fiberglass. It has the characteristics of high strength, light weight, and anti-corrosion. It is widely used in industry, chemical industry, shipbuilding and other fields. It can be used on platforms, stairs, trestles and other places to provide a reliable walking surface.

◆ Specification

Material

A composite of high-strength materials such as stainless steel and fiberglass.

Diameter data

Dimensional data: The common size is 1000mm × 6000mm, which can also be customized according to customer requirements.

◆ Dimensional

Dimensional data

The common size is 1000mm × 6000mm, which can also be customized according to customer requirements.

Surface treatment

Different surface treatment methods can be selected, such as brightening, sandblasting, pickling, etc.

Color

Original color of stainless steel, the bright surface is silvery white, fiberglass is usually translucent or gray.

Customization

Materials, sizes, and surface treatments can be customized according to specific needs.

◆ Quality Control

Material selection

Use high-strength, corrosion-resistant materials to ensure that the composite steel grating has excellent performance in different environments.

Manufacturing process

Adopt advanced composite technology to ensure strong bonding between different material layers and improve overall stability.

Dimensional accuracy

Conduct dimensional accuracy testing to ensure that each composite steel grating meets specifications and is adaptable to various usage scenarios.

Interlayer bonding strength

Test the bonding strength between composite layers to ensure that the bonding between different layers of materials is strong and not easy to delaminate.

Surface treatment

Carry out anti-corrosion, anti-rust and other surface treatments to improve the durability and stability of the product.

◆ Applicable scene

Mainly used in places that require high strength, light weight, and anti-corrosion, such as industrial plants, chemical plant areas, ship platforms, etc.

◆ Installation method

Composite steel grating is easy to install and can be fixed in the required position by bolts or welding.

◆ Precautions

Storage

It needs to be stored in a dry and ventilated place before installation to avoid prolonged moisture.

Protection

Pay attention to protecting the product surface during installation to prevent scratches and damage.

Packaging materials: Use waterproof and anti-corrosion packaging materials, such as plastic films, woven bags, etc., to protect products from the external environment.

Packaging method: Stack the composite steel grating neatly to avoid extrusion and deformation. Strengthen support at key locations to reduce damage during transportation.

◆ Steel grating



Steel grating is a plate with a metal grid structure, usually welded by flat steel or round steel at a certain spacing and intersection. Its characteristics include light weight, high strength, ventilation and light transmission, and excellent drainage performance. It is widely used in industrial, civil construction and other fields.

◆ Specification

Material

Common materials include carbon steel, stainless steel, etc.

Diameter data

Diameter data is variable according to different specifications and requirements.

◆ Dimensional

Dimensional data

Common sizes include 1000mm × 6000mm, 1250mm × 6000mm, etc., which can also be customized according to customer needs.

Surface treatment

You can choose surface treatment methods such as hot-dip galvanizing and spray painting to improve the anti-corrosion performance of the product.

Color

Generally silver gray is used, other colors can also be selected according to customer needs.

Customization

Materials, sizes, and surface treatments can be customized according to specific needs.

◆ Quality Control

Material selection

Strictly select high-quality steel to ensure its strength and corrosion resistance to cope with various working environments.

Manufacturing process

Adopt advanced welding or plugging process to ensure that the steel grating is firmly connected and not easy to loosen, improving the overall stability.

Dimensional accuracy

Conduct dimensional accuracy testing to ensure that each steel grating meets specifications and is suitable for various construction and industrial scenarios.

Surface treatment

Carry out anti-corrosion, anti-rust and other surface treatments to improve the durability and corrosion resistance of the product.

Soldering joint quality

Conduct quality inspection on soldering joints to ensure that the welding is firm and not prone to cracks or breaks.

◆ Applicable scene

Mainly used in industrial plants, walking paths, stairs, platforms, trestles, stair treads and other places that require ventilation, drainage and anti-slip.

◆ Installation method

The steel grating is flexible to install and can be fixed in the required position by bolts or welding.

◆ Precautions

Storage

It needs to be stored in a dry and ventilated place before installation to avoid prolonged moisture.

Protection

Pay attention to protecting the product surface during installation to prevent scratches and damage.

Packaging materials: Use sturdy packaging materials, such as wooden boxes or pallets, to protect the steel grating from extrusion and collision.

Packaging method: Stack the steel grating neatly to avoid extrusion and deformation. Strengthen support at key locations to reduce damage during transportation.

◆ Municipal steel grating



Municipal steel grating is a multifunctional building material, usually made of high-strength steel, with the characteristics of lightness, ventilation, and lighting. It is widely used in municipal projects such as roads, bridges, sidewalks, drainage ditches, etc. to provide a stable walking surface and drainage function.

◆ Specification

Material

Made of stainless steel with excellent corrosion resistance.

Diameter data

None applicable, can be customized according to actual needs.

◆ Dimensional

Dimensional data

The common size is 1000mm × 6000mm, which can also be customized according to customer requirements.

Surface treatment

You can choose different surface treatments such as natural bright, sandblasting, and pickling.

Color

Original color of stainless steel, bright surface is silvery white.

Customization

Materials, sizes, and surface treatments can be customized according to specific needs.

◆ Quality Control

Material selection

Stainless steel is strictly selected to ensure its corrosion resistance and weather resistance.

Manufacturing process

Adopt advanced manufacturing processes, such as precise welding and cutting technology, to ensure the quality and stability of each steel grating.

Dimensional accuracy

Conduct dimensional accuracy testing to ensure that each steel grating meets the specifications and adapts to the needs of different scenarios.

Surface treatment

Surface treatment, usually a bright surface of stainless steel, to improve its corrosion resistance.

Durability test

Conduct durability tests to ensure that the stainless steel grating can still maintain stability and performance when used in different environments.

◆ Applicable scene

Mainly used in industrial plants, chemical plant areas, stairs, platforms, passages and other places where corrosion resistance, pressure resistance and anti-slip are required.

◆ Installation method

Stainless steel grating is easy to install and can be fixed in the required position by bolts or welding.

◆ Precautions

Storage

It needs to be stored in a dry and ventilated place before installation to avoid prolonged moisture.

Protection

Pay attention to protecting the product surface during installation to prevent scratches and damage.

Packaging materials: Use waterproof and anti-corrosion packaging materials, such as plastic films, woven bags, etc., to protect the products from the external environment.

Packaging method: Stack the stainless steel gratings neatly to avoid extrusion and deformation. Strengthen support at key locations to reduce damage during transportation.



◆ 01. Pet cage

78-79



◆ 02. Breeding cage

80-81



Animal Cage Series

Including Pet cage, Breeding cage.

Welcome to communicate with us at any time!



WeChat: +8613373483555

Email: info@hl-metalmesh.com

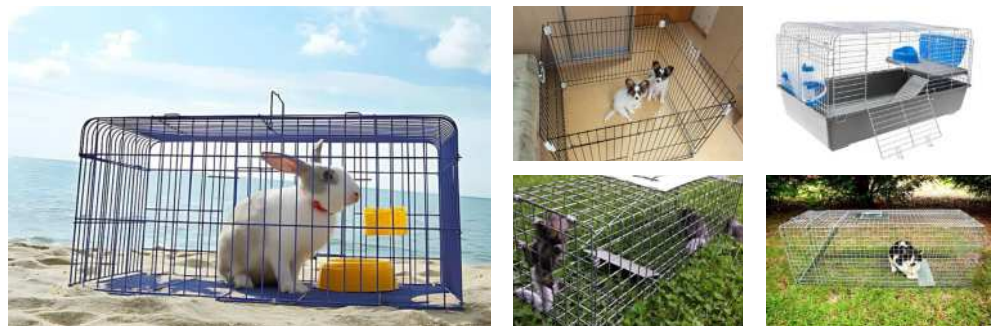
Website: hl-metalmesh.com

Telephone: +8613373483555

WhatsApp: +8619932376137

Address: No. 9-1, Shuguang Street, West District, Raoyang County Economic Development Zone, Hengshui City, Hebei Province

◆ Pet cage



A pet cage is a device designed to provide a comfortable and safe space for pets. Made of high-quality anti-corrosion and durable materials, with solid structure and reasonable design, it provides a safe and comfortable living environment for pets. Pet cages are not only convenient for management, but also help protect pets and cultivate living habits.

◆ Specification

Material

Use high-strength, anti-corrosion materials to ensure product durability.

Diameter data

Customized according to different pet types and sizes. Common diameters include 6mm, 8mm, etc.

◆ Dimensional

Size

Pet cages of different specifications and shapes can be customized according to the type and number of pets, etc.

Surface treatment

Usually anti-corrosion treatment is used to ensure that it will not rust for a long time.

Color

Can be customized according to customer needs, providing a variety of color options.

Customization

Materials, sizes, and surface treatments can be customized according to specific needs.

◆ Quality Control

Material selection

Strictly test the pet cage materials used to ensure that the materials are non-toxic, harmless, not easily deformed, easy to clean, and comply with relevant safety standards.

Structural stability

The door lock of the pet cage is a key part and needs to be tested repeatedly to ensure that the pet cannot open it easily to prevent escape or other accidents.

Door lock design

The door lock of the pet cage is a key part and needs to be tested repeatedly to ensure that the pet cannot open it easily to prevent escape or other accidents.

Ventilation performance

The pet cage needs to have good ventilation performance. Through the design and location of the ventilation holes, ensure that the pet has enough fresh air in the cage.

Surface treatment

The surface of the pet cage may require anti-rust, anti-corrosion and other treatments to enhance the durability of the product.

◆ Applicable scene

Pet cages are suitable for various pet places, such as homes, pet shops, pet hospitals, etc., to provide pets with a safe and comfortable living space.

◆ Installation method

The pet cage is easy to install. You can choose hanging, bracket or combined installation according to the needs of the pet and the space arrangement of the owner.

◆ Precautions

Storage

Clean the pet cage regularly, maintain a sanitary environment, and store it in a dry and ventilated place to avoid prolonged moisture.

Protection

Take corresponding protective measures according to the type and characteristics of pets to ensure the safety of pets.

Packaging materials: Use waterproof and anti-corrosion packaging materials, such as plastic films, woven bags, etc., to protect the products from the external environment.

Fixing method: Stack the stainless steel gratings neatly to avoid extrusion and deformation. Strengthen support at key locations to reduce damage during transportation.

◆ Breeding cage



The breeding cage is an efficient and environmentally friendly breeding equipment specially designed for the agricultural breeding industry. Made of high-quality anti-corrosion and durable materials, it has a solid structure and reasonable design, providing a safe and healthy breeding environment. Breeding cages can not only improve breeding efficiency, but also help manage and protect farmed animals.

◆ Specification

Material

High-strength anti-corrosion material

◆ Dimensional

Size

Customized according to different breeding needs

Structure

Solid cage structure, reasonable ventilation design

Color

Customized according to customer needs

Customization

Breeding cages of different specifications and shapes can be customized according to the type and quantity of cultured animals.

◆ Quality Control

Material selection

Test the breeding cage materials used to ensure that they are corrosion-resistant, weather-resistant, non-toxic and harmless to ensure the safety of animals during the breeding process.

Structural stability

Conduct stability testing on the structure of the breeding cage to ensure that it is not easily deformed or damaged during use and improve the service life of the product.

Ventilation performance

Breeding cages need to have good ventilation performance. Through testing, ensure that the ventilation holes are properly designed to ensure air circulation in the breeding environment.

Safety inspection

Conduct safety inspection on the cage edges, connecting parts, etc. to prevent animals from being injured or escaping during use.

Surface treatment

The cage may require surface treatment, such as spraying anti-corrosion coating, etc., to ensure that the product has good corrosion resistance.

◆ Applicable scene

Breeding cages are suitable for all types of poultry, aquatic and other breeding places, such as poultry houses, fisheries, etc., to provide efficient management and animal protection for the breeding industry.

◆ Installation method

The breeding cage is easy to install. You can choose hanging or bracket installation according to actual needs, which is flexible and convenient.

◆ Precautions

Cleanliness

Clean the breeding cage regularly to maintain a sanitary environment.

Protective measures

According to the characteristics of farmed animals, take corresponding protective measures.

Packaging materials: Use sturdy packaging materials, such as wooden boxes or cartons, to protect the breeding cages from damage during transportation.

Filling: Add an appropriate amount of filling to the packaging to slow down the impact and prevent the breeding cage from being collided or squeezed during transportation.



Filter series

Including Punching mesh, Dust filter, Filter basket, Sheet filter, Sintered filter, Cylindrical filter.

Welcome to communicate with us at any time!

◆ 01. Punching mesh

84-85



◆ 02. Dust filter

86-87



◆ 03. Filter basket

88-89



◆ 04. Sheet filter

90-91



◆ 05. Sintered filter

92-93



◆ 06. Cylindrical filter

94-95



WeChat: +8613373483555

Email: info@hl-metalmesh.com

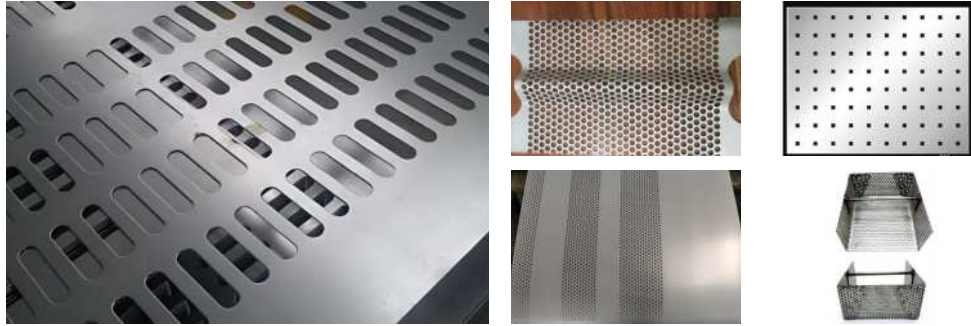
Website: hl-metalmesh.com

Telephone: +8613373483555

WhatsApp: +8619932376137

Address: No. 9-1, Shuguang Street, West District, Raoyang County Economic Development Zone, Hengshui City, Hebei Province

◆ Punching mesh



Perforated mesh, also known as perforated plate, is a metal plate made by punching. It has the characteristics of neat openings, ventilation and light transmission, beauty and durability. It is widely used in architectural decoration, screens, filters, protective nets and other fields to meet the special needs of different scenarios.

◆ Specification

Material

A variety of metal materials are available, such as stainless steel, aluminum alloy, galvanized steel plate, etc.

Diameter data

There are many options for the aperture diameter of the punching mesh, which can be customized according to needs.

◆ Dimensional

Dimensional data

Plate dimensions can be cut and customized according to customer needs.

Surface treatment

You can choose electro-galvanizing, plastic spraying, anodizing, etc. to improve corrosion resistance and aesthetics.

Color

Common colors include silver, black, etc., which can also be customized according to customer needs.

Customization

Materials, sizes, and surface treatments can be customized according to specific needs.

◆ Quality Control

Material selection

Use high-quality metal materials, such as stainless steel, iron plates, etc., to ensure that the perforated mesh has good mechanical properties and corrosion resistance.

Punching process

Adopt advanced punching process to ensure regular aperture and reasonable layout, ensuring the permeability and beauty of the punching net.

Dimensional accuracy

Through precision production equipment and strict quality inspection, the dimensional accuracy of the punching mesh is guaranteed to meet the design and customer requirements.

Surface treatment

Anti-rust, anti-corrosion and other surface treatments can be carried out to improve the weather resistance of the punching mesh and adapt to different environmental conditions.

Tensile strength

Conduct a tensile strength test to ensure that the perforated mesh is not easily deformed or broken when exposed to external stress.

◆ Applicable scene

Perforated mesh is suitable for building facades, ceilings, decorative mesh, protective mesh, screens and other fields to meet the decoration and functional needs of different scenes.

◆ Installation method

The installation methods of punched mesh are flexible and diverse, and can be fixed on different structures through bolts, welding, etc. The specific installation method depends on the usage scenario.

◆ Precautions

Storage

During storage, it is recommended to place it in a ventilated and dry place to avoid prolonged moisture.

Protection

Pay attention to protective measures during transportation and installation to avoid scratches and damage.

Packaging materials: Use packaging materials suitable for punched mesh, such as wooden boxes, plastic films, etc., to prevent damage or deformation during transportation.

Packaging method: Use reasonable packaging methods to ensure that the punching mesh is stacked neatly to avoid extrusion and collision and reduce damage during transportation.

◆ Dust filter



A dust filter is a filter specially designed to remove dust, particles and other impurities from the air. It is widely used in industrial production, air conditioning systems, workshop purification and other fields to improve air quality and ensure the cleanliness of the production environment.

◆ Specification

Material

Common materials include glass fiber, synthetic fiber, activated carbon fiber, etc., which can be selected according to needs.

Diameter data

The pore size of the filter is determined by the specific filtration requirements and is usually measured in microns.

◆ Dimensional

Dimensional data

Different sizes can be customized to suit different air conditioning systems or industrial equipment.

Surface treatment

Waterproof, anti-static, mildew-proof and other surface treatment methods can be selected according to the use environment.

Color

Usually white or gray to comply with cleaning and hygiene requirements.

Customization

Materials, sizes, and surface treatments can be customized according to specific needs.

◆ Quality Control

Material selection

Use high-quality filter materials, such as glass fiber, synthetic fiber, etc., to ensure good high temperature resistance, chemical corrosion resistance and other properties.

Filtration efficiency

Conduct a filtration efficiency test to ensure that the dust filter can achieve the designed filtration effect when filtering particles in the air.

Pressure resistance

Test the pressure resistance of the dust filter to ensure that it is not easily deformed or damaged during use.

Waterproof performance

For humid environments, the waterproof performance of the dust removal filter is tested to ensure that it can work normally under humid conditions.

Wear resistance

Test the wear resistance of the filter material to ensure that the dust filter is not easy to wear during long-term use and maintains stable filtration performance.

◆ Applicable scene

Perforated mesh is suitable for building facades, ceilings, decorative mesh, protective mesh, screens and other fields to meet the decoration and functional needs of different scenes.

◆ Installation method

The installation methods of punched mesh are flexible and diverse, and can be fixed on different structures through bolts, welding, etc. The specific installation method depends on the usage scenario.

◆ Precautions

Storage

During storage, it is recommended to place it in a dry and ventilated place to avoid prolonged moisture.

Protection

Care must be taken during installation to avoid scratches and damage.

Packaging materials: Use waterproof and moisture-proof packaging materials, such as plastic bags, moisture-proof cartons, etc., to protect the dust filter from moisture.

Packaging method: Stack the dust removal filters neatly to avoid squeezing and bending, and use reasonable packaging methods to ensure that the product is not damaged during transportation.

◆ Filter basket



The filter basket is a device used to filter particles and impurities in liquids or gases. It is made of specific materials and has good filtration effect and durability. Filter baskets are often used in liquid filtration systems, air purification systems and other scenarios to effectively improve system operation efficiency.

◆ Specification

Material

Choose corrosion-resistant, high-strength materials, such as stainless steel, plastic, etc., to adapt to different working environments.

Diameter data

According to different filtration requirements, filter baskets of different diameters can be selected.

◆ Dimensional

Size data

According to the requirements of specific application scenarios, filter baskets of various sizes are provided to ensure adaptability.

Surface treatment

The surface can be treated with anti-corrosion and anti-rust treatment to improve the durability and stability of the product.

Color

Common colors include silver, black, etc., which can be customized according to customer needs.

Customization

According to the specific needs of customers, materials, sizes and surface treatments can be personalized.

◆ Quality Control

Material selection

Use high-quality filter materials, such as stainless steel, plastic, etc., to ensure corrosion resistance, high temperature resistance, and chemical resistance.

Mesh size

Strictly control the mesh size to ensure that the filter basket can effectively filter target particles and adapt to different filtration requirements.

Structural stability

Ensure that the structure of the filter basket is stable, the welding points are firm, and it is not easily deformed, thus increasing the service life of the product.

Surface treatment

Carry out surface treatment, such as electroplating, plastic spraying, etc., to increase the corrosion resistance and aesthetics of the product.

Pressure resistance

Test the pressure resistance of the filter basket to ensure that it is not easily deformed during use and maintains the filtering effect.

◆ Applicable scene

Mainly used in liquid filtration systems, air purification systems, water treatment systems, etc., suitable for filtering particulate matter in liquids or gases.

◆ Installation method

The filter basket can be installed in various ways according to the needs of the system design, such as hanging installation, fixed installation, etc.

◆ Precautions

Storage

It is recommended to avoid the filter basket from being squeezed during storage to prevent deformation from affecting the use effect.

Protection

Care must be taken during installation to avoid scratches and damage.

Packaging materials: Use sturdy packaging materials, such as cartons and wooden boxes, to prevent damage during transportation.

Packaging method: Take appropriate protective measures for the filter basket to avoid collision and extrusion, and adopt reasonable packaging methods to ensure that the product arrives in good condition.

◆ Sheet filter



The sheet filter is a type of filter used to filter impurities in liquids or gases. Its structure is sheet-shaped and has a large filtering area. It can effectively capture particulate matter and ensure the cleanliness of liquids or gases. Suitable for liquid filtration systems, air purification systems and other fields.

◆ Specification

Material

Use high-quality, corrosion-resistant materials, such as stainless steel, plastic, etc., to ensure the stability of the product in different working environments.

Diameter data

Sheet filters of different diameters are provided according to filtration requirements and application scenarios.

◆ Dimensional

Size data

Various size options are available to accommodate different sized filtration systems.

Surface treatment

The surface can be treated with anti-corrosion and anti-rust treatment to improve the durability and stability of the product.

Color

It can be customized according to customer needs. Common colors include silver, black, etc.

Customization

According to specific needs, materials, sizes and surface treatments can be customized to meet the special needs of different customers.

◆ Quality Control

Material selection

Use high-quality, corrosion-resistant materials, such as stainless steel, to ensure the stability and durability of the product in different working environments.

Diameter data

Strictly control the diameter data of the filter to ensure filtration accuracy and stability and adapt to different filtration requirements.

Size data

A variety of size options are available to accommodate different sizes of filtration systems to meet customers' individual needs.

Surface treatment

Carry out anti-corrosion and anti-rust surface treatment to improve the durability and stability of the product.

Color

Can be customized according to customer needs, common colors include silver, black, etc.

Customization options

According to the specific needs of customers, materials, sizes and surface treatments can be customized to meet the special needs of different application scenarios.

◆ Applicable scene

Sheet filters are mainly used in liquid filtration systems, air purification systems, etc., and are suitable for occasions requiring large-area filtration.

◆ Installation method

Depending on the needs of the system design, the sheet filter can be installed in a variety of ways, such as hanging installation, fixed installation, etc.

◆ Precautions

Storage

It is recommended to avoid the filter from being squeezed during storage to prevent deformation from affecting the use effect.

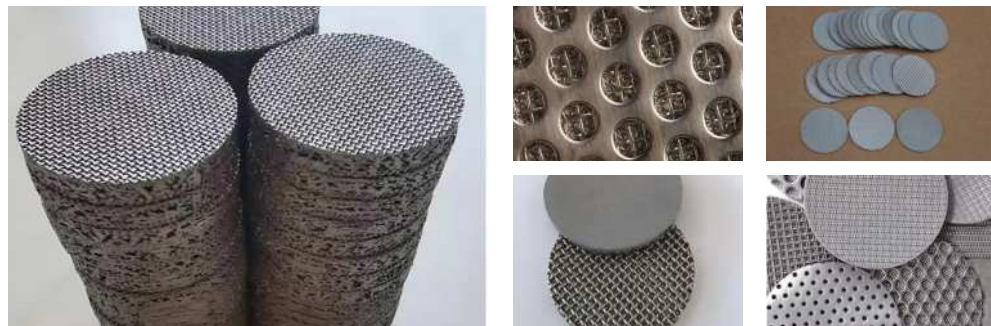
Protection

Care must be taken during installation to avoid scratches and damage.

Packaging materials: Use waterproof and anti-corrosion packaging materials, such as plastic films, woven bags, etc., to ensure that the products are not damaged during transportation.

Packaging method: Stack the sheet filters neatly to avoid extrusion and deformation, strengthen the support of key parts, and reduce damage during transportation.

◆ Sintered filter



Sintered filter mesh is a high-efficiency filter material that uses a special manufacturing process to form a sheet-like network structure with a unique pore structure. It has excellent filtration performance in liquid or gas filtration and can be widely used in industrial filtration fields to ensure that particulate matter in the fluid is effectively removed and improve the purification effect of the system.

◆ Specification

Material

Use high-quality sintered materials, such as stainless steel, alloy, etc., to ensure high temperature resistance, corrosion resistance and other properties.

Diameter data

According to filtration requirements and application scenarios, sintered filters of different diameters are provided to meet filtration needs of different sizes.

◆ Dimensional

Size data

A variety of size options can be provided according to the specific needs of customers to adapt to the filtration requirements of different systems.

Surface treatment

After a special sintering process, a uniform pore structure is formed on the surface to improve filtration efficiency.

Color

Since it is mainly made of metal materials, it usually keeps its original color, but it can be surface treated or painted according to customer requirements.

Customization

Materials, sizes, surface treatments, etc. can be customized according to specific needs to meet the special needs of different customers.

◆ Quality Control

Material selection

Use high-quality raw materials, such as sintered stainless steel wire, to ensure that the product has excellent corrosion resistance and high temperature resistance.

Sintering process

Advanced sintering process is adopted to ensure that the pore structure of the sintered filter is uniform and the filtration effect is stable and reliable.

Specification requirements

Surface treatment is performed on the sintered filter to enhance its corrosion resistance and mechanical strength and extend its service life.

High temperature resistance test

Conduct high temperature resistance performance test to ensure that the product can still maintain stable filtration performance in high temperature environment.

Quality inspection process

Implement a strict quality inspection process, including appearance inspection, dimensional measurement, porosity testing, etc., to ensure that the quality of each sintered filter screen meets the standard.

◆ Applicable scene

Sintered filters are suitable for industrial fields that require high-efficiency filtration, such as petrochemical, electric power, metallurgy, etc., and are widely used in filtration and purification systems for liquids and gases.

◆ Installation method

Sintered filters can be installed in different ways according to the needs of system design, such as fixed, suspended, etc., to ensure effective operation in different working environments.

◆ Precautions

Storage

It is recommended to avoid extrusion and collision during storage to avoid affecting the pore structure and service life of the product.

Protection

Use caution during installation and maintenance to avoid scratching or damaging surfaces.

Packaging materials: Use corrosion-resistant and moisture-proof packaging materials, usually plastic films, wooden boxes, etc., to ensure that the product is not damaged during transportation.

Packaging method: The sintered filter adopts a reasonable packaging method to avoid extrusion and collision and reduce deformation and damage during transportation.

◆ Cylindrical filter



The cylindrical filter is a device used for liquid or gas filtration. It has a cylindrical structure and a large filtration area. It can effectively capture particles and impurities and ensure the cleanliness of the fluid. This product is widely used in industrial fields to improve the filtration effect of the system.

◆ Specification

Material

Use high-quality, corrosion-resistant materials, such as stainless steel, plastic, etc., to ensure the stability of the product in different working environments.

Diameter data

According to the filtration requirements and application scenarios, cylindrical filters of different diameters are provided to meet the filtration needs of different sizes.

◆ Dimensional

Size Data

Various size options are available to accommodate different sized filtration systems.

Surface treatment

The surface can be treated with anti-corrosion and anti-rust treatment to improve the durability and stability of the product.

Color

It can be customized according to customer needs. Common colors include silver, black, etc.

Customization

According to specific needs, materials, sizes and surface treatments can be customized to meet the special needs of different customers.

◆ Quality Control

Material selection

The cylindrical filter uses high-quality filter materials, usually stainless steel, nickel alloy, etc., to ensure that the product has excellent corrosion resistance and high temperature resistance.

Filtration precision control

Through strict production process control, we ensure that the filtration precision of the cylindrical filter reaches the design requirements and meets the filtration needs of different application scenarios.

Specification and size inspection

Carry out accurate inspection of specifications and dimensions to ensure that the appearance size and pore size of the cylindrical filter mesh meet the design standards and provide stable filtration performance.

Pressure resistance test

Conduct a pressure resistance test on the cylindrical filter to ensure that under normal use, the product can withstand the design pressure without rupture or deformation.

Welding process control

Adopt high-level welding process to ensure that the solder joints are firm, not prone to desoldering or cracks, and improve the structural strength of the product.

◆ Applicable scene

Cylindrical filters are mainly used in liquid and gas filtration systems and are suitable for occasions requiring large-area filtration, such as water treatment, chemical industry, food and other industries.

◆ Installation method

According to the needs of system design, the cylindrical filter can be installed in a variety of ways, such as suspended installation, fixed installation, etc., to ensure effective operation in different working environments.

◆ Precautions

Storage

It is recommended to avoid the filter from being squeezed during storage to prevent deformation from affecting the use effect.

Protection

During the installation process, attention should be paid to protecting the product surface to prevent scratches and damage.

Packaging materials: Use waterproof and anti-corrosion packaging materials, usually plastic films, foam boards, etc., to protect the cylindrical filter from the external environment during transportation

Packaging method: Reasonably package the cylindrical filter to avoid extrusion and collision to ensure that the product is not deformed or damaged during transportation.



Window Screen series

Including PVC Window Screen, Stainless steel window screen, Anti-theft King Kong Network, Aluminum alloy window screen

Welcome to communicate with us at any time!

◆ 01. PVC Window Screen

98-99



◆ 02. Stainless steel window screen

100-101



◆ 03. Anti-theft King Kong Network

102-103



◆ 04. Aluminum alloy window screen

104-105



WeChat: +8613373483555

Email: info@hl-metalmesh.com

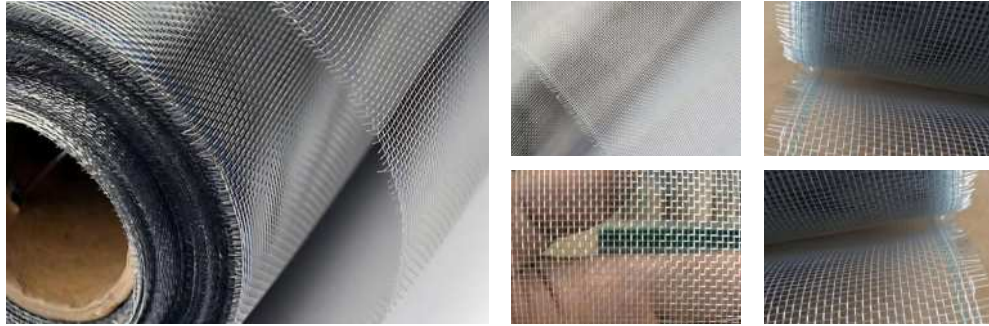
Website: hl-metalmesh.com

Telephone: +8613373483555

WhatsApp: +8619932376137

Address: No. 9-1, Shuguang Street, West District, Raoyang County Economic Development Zone, Hengshui City, Hebei Province

◆ PVC Window Screen



PVC window screens are high-quality, lightweight, and durable window decoration and protection products. Made of high-quality PVC materials, they have excellent weather resistance and anti-aging properties. With a fine mesh design, PVC window screens can effectively block mosquitoes and dust while maintaining good transparency, providing fresh air indoors.

◆ Specification

Material

PVC

Diameter

Customized according to specifications.

◆ Dimensional

Size

Customized according to window size.

Surface treatment

Smooth treatment.

Color

Transparent (can be customized according to customer needs)

Customization

Materials, sizes and surface treatments can be customized according to specific needs.

◆ Quality Control

Material testing

The PVC materials used are strictly tested to ensure that they are uniform in texture, flawless, and comply with relevant quality standards.

Mesh diameter measurement

The mesh diameter of each window screen is measured to ensure it meets product specifications and customer requirements.

Dimensional accuracy testing

Perform accuracy testing on the size of the window screen to ensure that it can be accurately installed on various window sizes and provide effective insect protection.

Surface treatment inspection

PVC window screens usually do not undergo surface treatment, but it is necessary to check whether the surface is smooth and burr-free to ensure that the window frame will not be damaged during installation.

Weather resistance test

Conduct a weather resistance test on PVC window screens to ensure that they are not prone to aging, deformation or fading under different climate conditions and maintain a long service life.

◆ Applicable scene

PVC window screens are suitable for all types of homes, apartments, offices, etc. They are an ideal indoor ventilation solution that can maintain air circulation while effectively blocking the invasion of pests.

◆ Installation method

PVC window screens are easy to install and can be optionally fixed to the window frame, making it easy for users to install and remove at any time.

◆ Precautions

Storage

Please store in a dry and ventilated place to avoid prolonged moisture.

Protection

When not in use for a long time, appropriate protection is recommended to avoid surface scratches.

Packaging materials: Use wear-resistant and waterproof packaging materials, such as plastic bags or foam boxes, to prevent damage from moisture or collision during transportation.

Packaging method: Neatly stack the PVC window screen inside the packaging material, and add an appropriate amount of filler to prevent collisions and scratches during transportation.

◆ Stainless steel window screen



Stainless steel window screen is a high-quality, durable window decoration and protection product. Made of high-quality stainless steel material with a detailed mesh design, it can effectively block mosquitoes and dust while maintaining good light transmittance. Window screens not only provide fresh air indoors, but also play a protective role, providing more convenience and safety for your home life.

◆ Specification

Material

Stainless steel

Diameter

Customized according to specifications.

◆ Dimensional

Size

Customized according to window size.

Surface treatment

Polished

Color

Silver (can be customized according to customer needs)

Customization

Materials, sizes and surface treatments can be customized according to specific needs.

◆ Quality Control

Material testing

Conduct quality testing on the stainless steel materials used to ensure that they meet relevant standards and have good corrosion resistance.

Mesh diameter measurement

Measure the mesh diameter of each window screen to ensure it meets customer needs and product specifications.

Dimensional accuracy testing

Perform accuracy testing on the size of the window screen to ensure that it can accurately fit various window sizes.

Surface treatment inspection

If polishing is performed, inspect the product surface to ensure that the polishing effect is good.

Confirmation of customization requirements

Confirm the customer's customization requirements, including material, mesh diameter, size, etc., to ensure the accuracy of customized products.

◆ Applicable scene

Stainless steel window screens are suitable for all types of residences, apartments, offices, etc. They are an ideal indoor ventilation solution that can maintain air circulation while effectively blocking the invasion of pests.

◆ Installation method

Easy to install, you can choose to fix it to the window frame or use magnetic adsorption, making it easy for users to install and disassemble at any time.

◆ Precautions

Storage

Please store in a dry and ventilated place to avoid prolonged moisture.

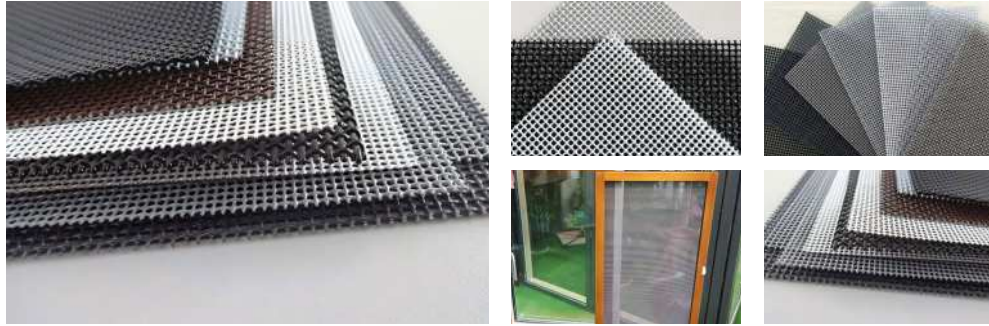
Protection

When not in use for a long time, appropriate protection is recommended to avoid surface scratches.

Packaging materials: Use strong cartons as the main packaging materials to ensure that they are not susceptible to external impacts during transportation.

Packaging: Neatly stack the window screens in cartons with appropriate fillers to prevent collision and deformation during transportation.

◆ Anti-theft King Kong Network



Anti-theft diamond mesh is a high-strength, anti-theft protection window decoration product. Made of high-quality metal materials, such as stainless steel or alloy, and made through special processes, it has a solid structure and excellent anti-theft performance. King Kong mesh not only effectively prevents break-ins, but also maintains good light transmittance, providing a safe and reliable home environment.

◆ Specification

Material

Stainless steel or alloy.

Diameter

Customized according to specifications.

◆ Dimensional

Size

Customized according to window size.

Surface treatment

Anti-rust treatment.

Color

Metallic color (can be customized according to customer needs)

Customization

Materials, sizes and surface treatments can be customized according to specific needs.

◆ Quality Control

Material testing

The diamond mesh materials used are strictly tested to ensure that they have high strength, corrosion resistance,

anti-aging and other properties to cope with various harsh weather conditions.

Mesh density testing

Test the mesh density of the diamond mesh to ensure it is small enough to effectively prevent small animals and insects from entering.

Surface treatment

Diamond mesh may be surface sprayed or electroplated to ensure a smooth and uniform surface and improve the corrosion resistance and appearance of the product.

Welding point inspection

If the diamond mesh adopts welding technology, the welding points need to be inspected to ensure that the welding is firm and not easy to be pried open.

Durability test

Conduct a durability test on the anti-theft diamond mesh to simulate its performance after long-term use to ensure its durability and stability.

◆ Applicable scene

Anti-theft diamond mesh is suitable for all types of residences, villas, commercial places, etc. It is an ideal window protection solution and provides comprehensive security protection for your home.

◆ Installation method

It is easy to install and can be firmly connected to the window frame to ensure that the anti-theft diamond mesh is stable and reliable. Professional installation team provides one-stop service.

◆ Precautions

Storage

Please store in a dry and ventilated place to avoid prolonged moisture.

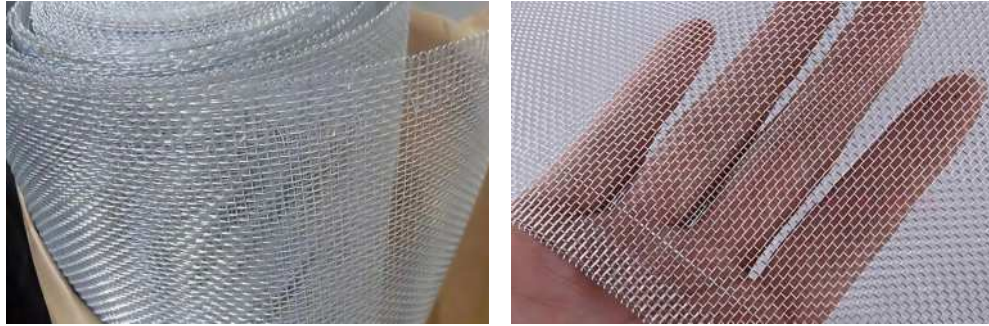
Protection

Regularly clean the surface of the anti-theft diamond mesh to maintain good anti-rust performance.

Packaging materials: Use sturdy packaging materials such as wooden boxes or cartons to ensure they are not damaged during transportation.

Filling: Add an appropriate amount of filler to the package to prevent the diamond mesh from being bumped or scratched during transportation.

◆ Aluminum alloy window screenNetwork



Aluminum alloy window screen is a high-quality, lightweight and durable window decoration and protection product. Made of high-quality aluminum alloy material, it has excellent corrosion resistance and strength. Through the fine mesh design, it can not only maintain good ventilation, but also effectively block pests and dust, providing fresh air indoors.

◆ Specification

Material

aluminum alloy.

Diameter

Customized according to specifications.

◆ Dimensional

Size

Customized according to window size.

Surface treatment

Anti-oxidation treatment.

Color

Aluminum color (can be customized according to customer needs)

Customization

Materials, sizes and surface treatments can be customized according to specific needs.

◆ Quality Control

Material testing

Conduct quality testing on the aluminum alloy materials used to ensure that they meet relevant standards and

have good strength and corrosion resistance.

Mesh diameter measurement

Measure the mesh diameter of each window screen to ensure it meets customer needs and product specifications.

Dimensional accuracy testing

Perform accuracy testing on the size of the window screen to ensure that it can accurately fit various window sizes.

Surface treatment inspection

If surface treatment, such as anodizing, etc., is performed, inspect the product surface to ensure that the treatment effect is good.

Confirmation of customization requirements

Confirm the customer's customization requirements, including material, mesh diameter, size, etc., to ensure the accuracy of customized products.

◆ Applicable scene

Aluminum alloy window screens are suitable for all types of homes, apartments, offices, etc. They are an ideal indoor ventilation solution that can maintain air circulation while effectively blocking the invasion of pests.

◆ Installation method

Easy to install, you can choose to fix it to the window frame or use magnetic adsorption, making it easy for users to install and disassemble at any time.

◆ Precautions

Storage

Please store in a dry and ventilated place to avoid prolonged moisture.

Protection

When not in use for a long time, appropriate protection is recommended to avoid surface scratches.

Packaging materials: Use strong and lightweight packaging materials, such as cartons or plastic bags, to ensure that they are not susceptible to external damage during transportation.

Packaging method: Neatly stack the window screen inside the packaging material, and add an appropriate amount of filler to prevent collisions and scratches during transportation.



Sound barrier series

Including Fiberglass sound barrier, Factory sound barrier, Highway sound barrier, Rail transit sound barrier, Bridge sound barrier...

Welcome to communicate with us at any time!

◆ 01. Fiberglass sound barrier

108-109



◆ 02. Factory sound barrier

110-111



◆ 03. Highway sound barrier

112-113



◆ 04. Rail transit sound barrier

114-115



◆ 05. Bridge sound barrier

116-117



◆ 06. Equipment noise reduction barrier

118-119



◆ 07. Municipal sound barrier

120-121



◆ 08. Railway sound barrier

122-123



WeChat:+8613373483555



Telephone:+8613373483555



Address:No. 9-1, Shuguang Street, West District, Raoyang County Economic Development Zone, Hengshui City, Hebei Province



Email:info@hl-metalmesh.com



WhatsApp:+8619932376137



Website:hl-metalmesh.com

◆ Fiberglass sound barrier



Fiberglass sound barrier is a professional acoustic barrier used to reduce noise transmission, made of fiberglass material. Its unique structure and material make it have excellent sound insulation effect, and it is widely used in places with serious noise environments such as highways, railways, and urban traffic.

◆ Specification

Material

Galvanized steel plate and H-beam and accessories.

◆ Dimensional

Dimensional data

Common dimensions include height and length, which can be customized as needed.

Surface treatment

Smooth surface with good weather resistance.

Color

Usually neutral tones, such as gray, white, etc.

Customization

Materials, sizes and surface treatments can be customized according to the customer's specific needs.

◆ Quality Control

Material selection

Use high-quality fiberglass materials to ensure they have sufficient strength, weather resistance and corrosion resistance to adapt to various environmental conditions.

Surface treatment

Carry out adequate surface treatment, such as spraying, coating, etc., to improve the durability and stability of the fiberglass sound barrier and prevent aging problems caused by long-term exposure.

Structural design

Design a reasonable acoustic structure to ensure that the fiberglass sound barrier reduces noise without affecting normal ventilation and lighting.

Dimensional accuracy

High dimensional accuracy is required during the production process to ensure the dimensional consistency of each sound barrier unit to facilitate installation and maintenance.

Color selection

A variety of color options are available to adapt to different scenes and environments, while making the sound barrier better integrate into the surrounding buildings.

Fire protection performance

Comply with national building fire protection standards to ensure that it will not cause additional safety hazards to the surrounding environment in an emergency.

◆ Applicable scene

Fiberglass sound barriers are widely used in the following scenarios: Next to highways and city roads, used to reduce traffic noise. On both sides of the railway line, reduce the noise generated by trains. Industrial areas and urban construction projects to reduce construction and mechanical equipment noise.

◆ Installation method

Fiberglass sound barriers are usually installed on brackets, which can be selected according to specific site conditions.

◆ Precautions

Storage

Store in a dry and ventilated place to avoid prolonged moisture.

Protection

During use, pay attention to preventing external collisions to ensure the integrity of the barrier.

Packaging materials: Use sturdy packaging materials, usually in wooden boxes or wooden pallets, to prevent damage from extrusion or collision during transportation.

Packaging method: Use professional packaging method to reasonably layer and fix the fiberglass sound barrier to ensure it remains stable during transportation.

◆ Factory sound barrier



Factory sound barriers are acoustic barriers specially designed for industrial factories. They are designed to effectively reduce the noise generated by mechanical equipment, production operations, etc. in the factory area, and provide a quiet working and living environment for the surrounding environment. Made of high quality materials with good sound insulation and durability.

◆ Specification

Material

Galvanized steel plate and H-beam and accessories.

Diameter data

Support columns of different diameters can be customized according to design and requirements.

◆ Dimensional

Dimensional data

Usually includes height and length, which can be customized according to specific factory conditions.

Surface treatment

Smooth surface treatment to improve the durability of the material.

Color

Color can be selected according to customer preference and environmental harmony.

Customization

Materials, sizes and surface treatments can be customized according to the actual needs of customers.

Structural design

Carry out reasonable structural design to ensure that the sound barrier reduces noise while not affecting the normal operation and ventilation of the factory area.

◆ Quality Control

Material selection

Choose high-quality materials, usually metal, fiberglass, etc., to ensure that the sound barrier has sufficient strength and weather resistance to be used outdoors for a long time.

Anti-corrosion treatment

Anti-corrosion treatment is carried out on the metal parts to improve its corrosion resistance and adapt to various harsh climate conditions.

Sound insulation performance

Ensure that the sound barrier has good sound insulation performance and effectively reduce noise transmission through appropriate sound insulation materials and structural design.

Fire protection performance

Comply with national building fire protection standards to ensure that no additional risks will be caused to the safety of the factory in an emergency.

Dimensional accuracy

High dimensional accuracy is required during the production process to ensure the dimensional consistency of each sound barrier unit to facilitate installation and maintenance.

◆ Applicable scene

Factory sound barriers are suitable for all types of industrial factories, including but not limited to: industrial production workshops, mechanical equipment operating areas, and warehousing and logistics areas.

◆ Installation method

Measurement and design: Before installing the sound barrier, you first need to measure the factory area to determine the installation location and size of the sound barrier. Design an appropriate sound barrier layout to minimize noise transmission.

Foundation Preparation: Excavate a foundation pit where the sound barrier will be installed to prepare a solid foundation for the sound barrier's pillars. Make sure the depth and dimensions of the foundation pit meet design requirements.

Column installation: Fix the columns of the sound barrier to the foundation according to the design drawings, and use bolts or other connectors to connect the columns to the foundation to ensure the stability of the columns.

Beam connections: Install beams between columns to connect the main structure of the sound barrier. The number and position of the beams are installed according to the design requirements.

Install sound insulation materials: Install sound insulation materials, such as sound-absorbing cotton or sound insulation panels, in the main structure of the sound barrier to improve the sound insulation effect of the sound barrier.

Install sound barrier panels: Install the sound barrier's soundproof panels or other soundproofing materials on the main structure to ensure complete enclosure of the sound source and reduce the spread of noise.

Inspection and adjustment: After installation is complete, conduct a comprehensive inspection to ensure that all parts of the sound barrier are tightly connected and not loose or damaged. Make adjustments as necessary to ensure the sound barrier works as expected.

Cleaning and Maintenance: After completing the installation, clean the construction site and ensure that the surrounding environment is clean and tidy. Perform regular maintenance on the sound barrier to check whether the connections are loose and whether the sound insulation materials are intact.

◆ Precautions

Storage

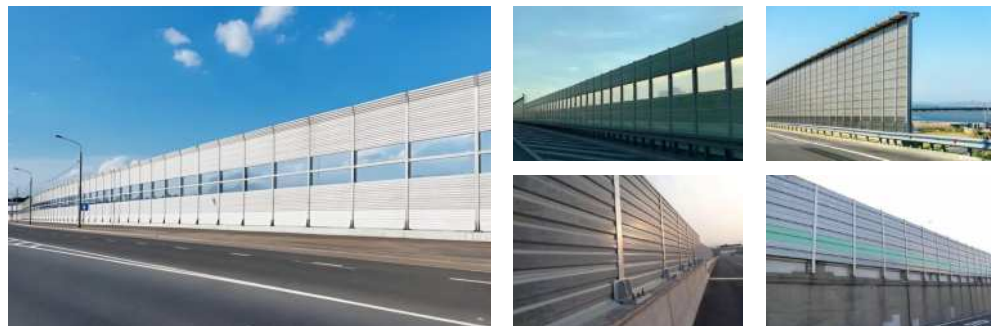
Store in a dry and ventilated place to avoid prolonged moisture.

Protection

During use, pay attention to preventing external collisions and ensuring the integrity of the sound barrier.

Packaging materials: Use sturdy packaging materials, usually in wooden boxes or wooden pallets, to prevent damage from extrusion or collision during transportation.

◆ Highway sound barrier



Highway sound barrier is a structure specially designed to reduce traffic noise. It aims to effectively block the noise generated by vehicles and protect the tranquility of surrounding residents and the environment. It has excellent sound insulation effect and can effectively reduce the impact of traffic noise on surrounding communities and the environment.

◆ Specification

Material

Galvanized steel plate and H-beam and accessories.

◆ Dimensional

Height range

Standard 2.5 meters to 5.0 meters, can be customized according to actual needs.

Width range

Standard 1.0 meters to 3.0 meters, adjustable according to design requirements.

Surface treatment

Smooth surface, sun protection and anti-corrosion treatment to improve the durability of the product.

Color

Can be customized according to customer needs, common colors include gray, green, etc.

Customization

Materials, height, width, etc. can be customized according to specific needs.

◆ Quality Control

Material selection

Choose high-quality noise-proof materials, usually fiberglass, aluminum alloy, steel, etc., to ensure that the sound barrier has sufficient strength and weather resistance and can be used outdoors for a long time.

Structural design

Carry out reasonable structural design to ensure that the sound barrier reduces noise while not affecting the normal flow of traffic and complying with relevant safety standards.

Sound insulation performance

Ensure that the sound barrier has good sound insulation performance and effectively reduce the noise generated by the highway through appropriate sound insulation materials and structural design.

Wind resistance

Consider wind resistance in the structural design to ensure that the sound barrier is stable in high-speed traffic and does not affect driving safety.

Anti-corrosion treatment

Anti-corrosion treatment is carried out on the metal parts to improve its corrosion resistance and adapt to various harsh climate conditions.

Dimensional accuracy

High dimensional accuracy is required during the production process to ensure the dimensional consistency of each sound barrier unit to facilitate installation and maintenance.

◆ Applicable scene

It is mainly used on both sides of traffic arteries such as highways and expressways, as well as in nearby residential areas, schools and other areas that are sensitive to traffic noise.

◆ Installation method

It can be fixed on both sides of the road to ensure it is perpendicular to the road surface, or it can be specially designed and installed according to actual needs.

◆ Precautions

Storage

It needs to be stored in a dry and ventilated place before installation to avoid prolonged moisture.

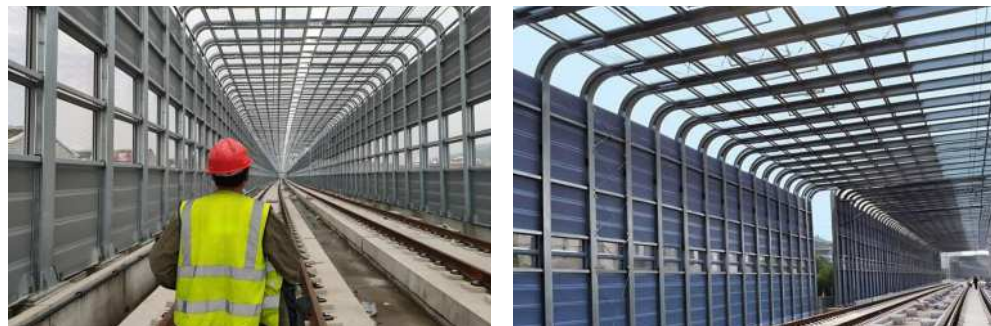
Protection

Pay attention to protecting the product surface during installation to prevent scratches and damage.

Packaging materials: Use sturdy packaging materials, usually in wooden boxes or wooden pallets, to prevent damage from extrusion or collision during transportation.

Packaging method: Use professional packaging method to reasonably layer and fix the sound barrier to ensure it remains stable during transportation.

◆ Rail transit sound barrier



Highway sound barrier is a structure specially designed to reduce traffic noise. It aims to effectively block the noise generated by vehicles and protect the tranquility of surrounding residents and the environment. It has excellent sound insulation effect and can effectively reduce the impact of traffic noise on surrounding communities and the environment.

◆ Specification

Material

Galvanized steel plate and H-beam and accessories.

◆ Dimensional

Height range

Standard 2.5 meters to 5.0 meters, can be customized according to actual needs.

Width range

Standard 1.0 meters to 3.0 meters, adjustable according to design requirements.

Surface treatment

Smooth surface, sun protection and anti-corrosion treatment to improve the durability of the product.

Color

Can be customized according to customer needs, common colors include gray, green, etc.

Customization

Materials, height, width, etc. can be customized according to specific needs.

◆ Quality Control

Material selection

Choose high-quality materials with good noise-proof properties, such as fiberglass, aluminum alloy, high-strength concrete, etc., to ensure the stability and noise reduction effect of the sound barrier.

Sound insulation performance

Ensure that the sound barrier has excellent sound insulation performance and effectively reduce the noise generated by rail transit through appropriate sound insulation materials and structural design.

Structural design

Carry out reasonable structural design to ensure that the sound barrier reduces noise while not affecting the normal operation of rail transit and complying with relevant safety standards.

Weather resistance

Considering the special environment used outdoors, ensure that the sound barrier has good weather resistance, UV resistance, high temperature resistance and other properties.

Anti-corrosion treatment

Anti-corrosion treatment is carried out on the metal parts to improve its corrosion resistance and adapt to various harsh climate conditions.

Dimensional accuracy

High dimensional accuracy is required during the production process to ensure the dimensional consistency of each sound barrier unit to facilitate installation and maintenance.

◆ Applicable scene

Mainly used on both sides of rail transit lines, especially suitable for rail transit systems such as urban subways and light rails, to effectively isolate the noise generated by trains.

◆ Installation method

It can be fixed on both sides of the rail transit line to ensure it is parallel to the track, or it can be specially designed and installed according to actual needs to greatly reduce noise transmission.

◆ Precautions

Storage

Store in a dry and ventilated place before installation to avoid prolonged moisture.

Protection

Pay attention to protecting the product surface during installation to prevent scratches and damage.

Packaging materials: Use sturdy packaging materials, usually in wooden boxes or wooden pallets, to prevent damage from extrusion or collision during transportation.

Packaging method: Use professional packaging method to reasonably layer and fix the sound barrier to ensure it remains stable during transportation.

◆ Bridge sound barrier



The bridge sound barrier is a structure specially designed to reduce bridge traffic noise. It aims to effectively block the noise generated by vehicles and protect the tranquility of surrounding residents and the environment. It has excellent sound insulation effect and can effectively reduce the impact of bridge traffic noise on surrounding communities and the environment.

◆ Specification

Material

Galvanized steel plate and H-beam and accessories.

◆ Dimensional

Height range

Standard 2.5 meters to 5.0 meters, can be customized according to actual needs.

Width range

Standard 1.0 meters to 3.0 meters, adjustable according to design requirements.

Surface treatment

Smooth surface, sun protection and anti-corrosion treatment to improve the durability of the product.

Color

Can be customized according to customer needs, common colors include gray, green, etc.

Customization

Materials, height, width, etc. can be customized according to specific needs.

◆ Quality Control

Material selection

Choose high-quality materials with good noise-proof properties, such as fiberglass, aluminum alloy, high-strength concrete, etc., to ensure the stability and noise reduction effect of the sound barrier.

Sound insulation performance

Ensure that the sound barrier has excellent sound insulation performance and effectively reduce the noise generated by bridge traffic through appropriate sound insulation materials and structural design.

Structural design

Carry out reasonable structural design to ensure that the sound barrier reduces noise while not affecting the normal operation of bridge traffic and complying with relevant safety standards.

Weather resistance

Considering the special environment used outdoors, ensure that the sound barrier has good weather resistance, UV resistance, high temperature resistance and other properties.

Anti-corrosion treatment

Anti-corrosion treatment is carried out on the metal parts to improve its corrosion resistance and adapt to various harsh climate conditions.

Dimensional accuracy

High dimensional accuracy is required during the production process to ensure the dimensional consistency of each sound barrier unit to facilitate installation and maintenance.

◆ Applicable scene

Mainly used in bridges and surrounding areas to reduce bridge traffic noise and improve the quality of life of surrounding residents.

◆ Installation method

It can be fixed on both sides of the bridge to ensure compatibility with the bridge structure, or it can be specially designed and installed according to actual needs.

◆ Precautions

Storage

It needs to be stored in a dry and ventilated place before installation to avoid prolonged moisture.

Protection

Pay attention to protecting the product surface during installation to prevent scratches and damage.

Packaging materials: Use sturdy packaging materials, usually in wooden boxes or wooden pallets, to prevent damage from extrusion or collision during transportation.

Packaging method: Use professional packaging method to reasonably layer and fix the sound barrier to ensure it remains stable during transportation.

◆ Equipment noise reduction barrier



The equipment noise reduction barrier is a sound insulation structure specially designed to reduce the noise generated by the equipment. It is designed to effectively reduce the noise generated when the equipment is running and provide a quiet working environment. By using efficient sound insulation materials and scientific structural design, noise transmission is effectively reduced and the surrounding environment and personnel health are protected.

◆ Specification

Material

Galvanized steel plate and H-beam and accessories.

◆ Dimensional

Height range

standard 2.5 meters to 5.0 meters, can be customized according to actual needs.

Width range

Standard 1.0 meters to 3.0 meters, adjustable according to design requirements.

Surface treatment

smooth surface, sun protection and anti-corrosion treatment to improve the durability of the product.

Color

Can be customized according to customer needs, common colors include gray, green, etc.

Customization

Materials, height, width, etc. can be customized according to specific needs.

◆ Quality Control

Material selection

Choose high-quality materials with good noise-proof properties, such as fiberglass, aluminum alloy, high-strength concrete, etc., to ensure the stability and noise reduction effect of the sound barrier.

Sound insulation performance

Ensure that the sound barrier has excellent sound insulation performance and effectively reduce the noise generated by bridge traffic through appropriate sound insulation materials and structural design.

Structural design

Carry out reasonable structural design to ensure that the sound barrier reduces noise while not affecting the normal operation of bridge traffic and complying with relevant safety standards.

Weather resistance

Considering the special environment used outdoors, ensure that the sound barrier has good weather resistance, UV resistance, high temperature resistance and other properties.

Anti-corrosion treatment

Anti-corrosion treatment is carried out on the metal parts to improve its corrosion resistance and adapt to various harsh climate conditions.

Dimensional accuracy

High dimensional accuracy is required during the production process to ensure the dimensional consistency of each sound barrier unit to facilitate installation and maintenance.

◆ Applicable scene

Mainly used in bridges and surrounding areas to reduce bridge traffic noise and improve the quality of life of surrounding residents.

◆ Installation method

It can be fixed on both sides of the bridge to ensure compatibility with the bridge structure, or it can be specially designed and installed according to actual needs.

◆ Precautions

Storage

It needs to be stored in a dry and ventilated place before installation to avoid prolonged moisture.

Protection

Pay attention to protecting the product surface during installation to prevent scratches and damage.

Packaging materials: Use sturdy packaging materials, usually in wooden boxes or wooden pallets, to prevent damage from extrusion or collision during transportation.

Packaging method: Use professional packaging method to reasonably layer and fix the sound barrier to ensure it remains stable during transportation.

◆ Municipal sound barrier



Municipal sound barriers are soundproofing devices used in urban environments to slow down the impact of traffic noise on surrounding residents and the environment. By using efficient sound insulation materials and rationally designed structures, municipal sound barriers effectively reduce noise generated by urban traffic and construction activities, providing a quieter urban environment.

◆ Specification

Material

Galvanized steel plate and H-beam and accessories.

◆ Dimensional

Height range

Standard 2.0 meters to 4.0 meters, can be customized according to actual needs.

Width range

Standard 1.0 meters to 3.0 meters, adjustable according to design requirements.

Surface treatment

The surface is treated with smoothness, sun protection and corrosion resistance to improve the durability of the product.

Color

Can be customized according to customer needs, usually choose a color that coordinates with the surrounding environment.

Customization

Materials, height, width, etc. can be customized according to specific needs.

◆ Quality Control

Material selection

Use efficient sound insulation materials, such as sound-absorbing cotton, fiberglass, etc., to ensure good sound insulation effect.

Structural design

Carry out reasonable structural design, including plate thickness, structural form, etc., to greatly reduce the transmission of various types of noise.

Sound insulation performance

Conduct strict sound insulation performance testing to ensure that the sound barrier can effectively reduce noise at different frequencies.

Wind pressure resistance

For outdoor environments, ensure that the sound barrier has good wind pressure resistance and can withstand strong winds and other natural conditions.

Weather resistance

Ensure that the sound barrier has good weather resistance and can adapt to the changing climate conditions of the city.

Visual effect

On the premise of meeting the sound insulation requirements, the design appearance is beautiful and meets the requirements of urban environment beautification.

Dimensional accuracy

Control the dimensional accuracy during the production process to ensure the dimensional consistency of each sound barrier unit for easy installation and maintenance.

◆ Applicable scene

It is mainly used in urban main roads, highways, bridges and other traffic arteries and around urban construction projects to provide residents with a relatively quiet living environment.

◆ Installation method

It can be fixed on both sides of traffic arteries or around urban construction sites to ensure coordination with surrounding building structures. It can also be specially designed and installed according to actual needs.

◆ Precautions

Storage

It needs to be stored in a dry and ventilated place before installation to avoid prolonged moisture.

Protection

Pay attention to protecting the product surface during installation to prevent scratches and damage.

Packaging materials: Use sturdy packaging materials, usually in wooden boxes or wooden pallets, to prevent damage from squeezing or collision during transportation.

Packaging method: Use professional packaging method to reasonably layer and fix the sound barrier to ensure it remains stable during transportation.

◆ Railway sound barrier



Railway sound barrier is an acoustic sound insulation facility specially designed to reduce railway transportation noise. It is designed to effectively isolate the noise generated during train movement and mitigate the impact on surrounding residents and the environment. With excellent sound insulation, railway sound barriers help improve the quality of life in areas surrounding railways.

◆ Specification

Material

Galvanized steel plate and H-beam and accessories.

◆ Dimensional

Height range

Standard 2.0 meters to 5.0 meters, can be customized according to actual needs.

Width range

Standard 1.0 meters to 3.0 meters, adjustable according to design requirements.

Surface treatment

The surface is treated with smoothness, sun protection and corrosion resistance to improve the durability of the product.

Color

Can be customized according to customer needs, usually choose a color that coordinates with the surrounding environment.

Customization

Materials, height, width, etc. can be customized according to specific needs.

◆ Quality Control

Material selection

Choose materials with excellent sound insulation properties, such as sound-absorbing cotton, fiberglass, metal materials, etc., to ensure effective sound insulation.

Structural design

Carry out reasonable structural design, including the thickness and shape of the plates, to greatly reduce the transmission of noise caused by railway traffic.

Sound insulation performance test

Strict sound insulation performance testing is conducted to ensure that the sound barrier performs well within the railway traffic noise frequency range.

Weather resistance

Ensure that the sound barrier has good weather resistance and can withstand wind and rain erosion in the railway environment.

Visual effect

On the premise of meeting the sound insulation requirements, the design has a beautiful appearance and is consistent with the surrounding railway environment.

Dimensional accuracy

Control the dimensional accuracy during the production process to ensure the dimensional consistency of each sound barrier unit for easy installation and maintenance.

Anti-corrosion treatment

According to the characteristics of moisture and corrosion in the railway transportation environment, anti-corrosion treatment is carried out to extend the service life of the sound barrier.

◆ Applicable scene

It is mainly used in locations along railway lines, station entrances and exits, etc., to provide a relatively quiet environment for surrounding residents and office areas.

◆ Installation method

It can be fixed along the railway line to ensure coordination with the railway structure, or it can be specially designed and installed according to actual needs.

◆ Precautions

Storage

It needs to be stored in a dry and ventilated place before installation to avoid prolonged moisture.

Protection

Pay attention to protecting the product surface during installation to prevent scratches and damage.

Packaging materials: Use sturdy packaging materials, usually wooden boxes or wooden pallets, to protect the sound barrier from damage during transportation.

Packaging method: Use professional packaging method to layer and fix the sound barrier, and add buffering materials to ensure it remains stable during transportation.



Gabion net series

Including Plastic coated gabion net, Slope protection net, Welded gabion mesh, Galvanized gabion mesh, Renault, Gabion...

Welcome to communicate with us at any time!

◆ 01. Plastic coated gabion net

126-127



◆ 02. Slope protection net

128-129



◆ 03. Welded gabion mesh

130-131



◆ 04. Galvanized gabion mesh

132-133



◆ 05. Renault

134-135



◆ 06. Gabion

136-137



◆ 07. Gabion cage

138-139



WeChat:+8613373483555



Email:info@hl-metalmesh.com



Website:hl-metalmesh.com



Telephone:+8613373483555



WhatsApp:+8619932376137



Address:No. 9-1, Shuguang Street, West District, Raoyang County Economic Development Zone, Hengshui City, Hebei Province

◆ Plastic coated gabion net



Plastic-coated gabion mesh is a decorative mesh with a strong structure. It adopts a gabion structure and is covered with a plastic-coated layer. Gabion mesh is usually constructed from galvanized or plastic-coated wire mesh, while the plastic coating is plastic or PVC material, designed to provide a strong and durable structure and increase aesthetics. This design makes the plastic-coated gabion net widely used in earth and rock engineering, protective engineering and garden landscaping.

◆ Specification

Material

Low carbon steel wire.

Diameter data

Common diameters are 3.0mm to 5.0mm, which can be customized according to actual needs.

◆ Dimensional

Dimensional data

Common grid sizes are 50mm × 50mm to 100mm × 100mm, which can be customized according to project requirements.

Surface treatment

The wire mesh is galvanized or plastic-coated, and the plastic coating layer is made of plastic or PVC material.

Color

The plastic coating layer is usually green, gray, etc., and can also be customized according to customer requirements.

Customization

Materials, sizes, and surface treatments can be customized according to specific needs.

◆ Quality Control

Material selection

Choose high-quality galvanized steel wire or other materials with corrosion resistance and superior tensile strength to ensure the corrosion resistance and durability of the product.

Wire diameter control

Control the wire diameter of the gabion mesh to ensure that it meets the design requirements and provides sufficient strength and stability.

Mesh size

The mesh size of the gabion mesh is controlled strictly in accordance with the design requirements to meet the needs of different projects.

Welding quality

If it is a welded plastic-coated gabion mesh, it is necessary to ensure that the welding is firm and the welding points are uniform to improve the stability of the overall structure.

Plastic Coating

Carry out sampling inspection, including tensile test, zinc coating thickness inspection, etc., to ensure that the product meets relevant standards and design requirements.

Quality inspection

The plastic coating needs to be uniform and strong to ensure it does not peel off over time and provides additional corrosion protection.

◆ Applicable scene

Mainly suitable for earth and stone engineering, river management, protection engineering, garden landscape and other fields.

◆ Installation method

Plastic coated gabion mesh can be assembled through connectors or steel wires, stacked and fixed according to actual needs.

◆ Precautions

Storage

It needs to be stored in a dry and ventilated place before installation to avoid prolonged moisture.

Protection

Pay attention to protect the plastic coating during installation to prevent scratches and damage.

Packaging materials: Use pressure-resistant and waterproof packaging materials, usually plastic films, woven bags, etc., to protect the gabion net from external damage during transportation.

Packaging method: Stack the plastic-coated gabions neatly to avoid extrusion and deformation, and strengthen support in important parts to prevent vibration damage during transportation.

◆ Slope protection net



Slope protection net is a protective structure used to prevent natural disasters such as slope landslides and landslides. It is made of materials with excellent weather resistance and corrosion resistance, which can effectively fix soil and rocks, prevent soil erosion, and protect the stability of slopes. Slope protection nets are widely used in roads, railways, water conservancy, mining and other projects, playing an important protective role.

◆ Specification

Material

Low carbon steel wire.

Diameter data

usually 2.0mm to 4.0mm, specific specifications can be customized according to project requirements.

◆ Dimensional

Dimensional data

Common grid sizes are 50mm × 50mm to 200mm × 200mm, which can be customized according to actual needs.

Surface treatment

The material itself is weather-resistant and corrosion-resistant, no additional surface treatment is required.

Color

Common colors include black, green, etc., which can also be customized according to customer requirements.

Customization

Materials, sizes, and colors can be customized according to specific needs.

◆ Quality Control

Material selection

Choose materials with strong weather resistance and corrosion resistance. Common ones include galvanized steel wire, high-strength polyester mesh, etc. to ensure stability in different environments.

Mesh size

Control the mesh size according to the specific needs of protection to ensure that the slope protection net plays a protective role without affecting the natural flow of soil and water.

Wire diameter and tension

The wire diameter and tension of the mesh are strictly controlled to ensure sufficient strength to cope with the pressure and challenges of slope protection.

Coating quality

If there is an anti-corrosion coating, it must be ensured that the coating is even and firmly adhered to provide additional anti-corrosion protection.

Installation structure

For different slope types and slopes, corresponding installation structure designs are provided to ensure that the slope protection net can be effectively fixed on the ground surface.

Weather resistance test

Carry out weather resistance test to ensure that the slope protection net can maintain long-term stability under different climate conditions.

◆ Applicable scene

Slope protection nets are mainly suitable for areas with unstable terrain such as slopes and mountains, and can be used for slope protection in roads, railways, water conservancy and other projects.

◆ Installation method

The slope protection net can be fixed through connectors or steel wires, and can be stacked and installed according to actual needs.

◆ Precautions

Storage

It needs to be stored in a dry and ventilated place before installation to avoid prolonged moisture.

Protection

Pay attention to protecting the slope protection net during installation to prevent scratches and damage.

Packaging materials: Use pressure-resistant and waterproof packaging materials, usually plastic films, woven bags, etc., to prevent external damage during transportation.

Packaging method: Stack the slope protection net neatly to avoid extrusion and deformation, and strengthen support at key parts to prevent vibration damage during transportation.

◆ Welded gabion mesh



Welded gabion mesh is a welded gabion structure that uses electric welding technology to weld metal wires into a grid and fill it with stones or other fillers to form a solid structure. It has good impact resistance, stability and water permeability, and is widely used in protection, river regulation, environmental beautification and other projects.

◆ Specification

Material

Low carbon steel wire.

Diameter data

Usually 2.0mm to 4.0mm, specific specifications can be customized according to project requirements.

◆ Dimensional

Dimensional data

The grid size is usually 50mm × 50mm to 100mm × 100mm, and can also be customized according to actual needs.

Surface treatment

Common surface treatment is galvanizing or galvanizing and plastic coating to improve the corrosion resistance of the product.

Color

Generally silver white, can be customized according to customer requirements.

Customization

Materials, sizes, and surface treatments can be customized according to specific needs.

◆ Quality Control

Welding process

Use advanced electric welding technology to ensure that each solder joint is firm and uniform, ensuring the strength and stability of the overall structure.

Material quality

Choose high-quality steel wire materials, usually galvanized or plastic-coated, to increase the corrosion resistance of the gabion net and extend its service life.

Mesh size

Control the mesh size of the gabion net to adapt to different engineering needs and ensure the stability of the stones in the gabion.

Specification requirements

According to the engineering design and requirements, ensure that the specifications of the welded gabion mesh comply with relevant standards.

Surface treatment

Anti-corrosion treatment, such as galvanizing, plastic coating, etc., to improve the weather resistance and corrosion resistance of the product.

Tensile strength

Test the tensile strength of the welded gabion mesh to ensure that it has sufficient strength under various external forces.

Appearance inspection

Inspect the appearance of the product to ensure that the solder joints are firm and have no obvious defects to improve the overall aesthetics.

Installation structure

Provide clear installation structure drawings to ensure that the welded gabion mesh can be installed correctly during construction and achieve the design effect.

◆ Applicable scene

Welded gabion mesh is widely used in river management, protection projects, landscaping, transportation infrastructure construction and other scenarios. It is especially suitable for engineering projects that require strength and stability.

◆ Installation method

Welded gabion mesh can be fixed through connectors or support frames, and the specific installation method is designed according to actual needs and engineering conditions.

◆ Precautions

Storage

It needs to be stored in a dry and ventilated place before installation to avoid prolonged moisture.

Protection

Pay attention to protect the product surface during transportation and installation to prevent scratches and damage.

Packaging materials: Use waterproof and anti-corrosion packaging materials, usually plastic films, woven bags, etc., to protect products from the external environment.

Packaging method: Stack the welded gabion mesh neatly to avoid extrusion and deformation, and appropriately strengthen the support of key parts to reduce damage during transportation.

◆ Galvanized gabion mesh



Galvanized gabion mesh is a mesh structure made of galvanized metal wires, formed by welding or weaving, and filled with stones or other fillers. It is used for protection, soil stabilization, river regulation and other applications in various projects. It has good corrosion resistance and impact resistance and is suitable for different environmental and climatic conditions.

◆ Specification

Material

Low carbon steel wire.

Diameter data

Usually 2.0mm to 4.0mm, specific specifications can be customized according to project requirements.

◆ Dimensional

Dimensional data

The grid size is usually 50mm × 50mm to 100mm × 100mm, and can also be customized according to actual needs.

Surface treatment

The entire product is hot-dip galvanized to improve its corrosion resistance.

Color

Generally silvery white, depends on the appearance of galvanizing treatment.

Customization

Materials, sizes, and surface treatments can be customized according to specific needs.

◆ Quality Control

Welding process

Use advanced electric welding technology to ensure that each welding point is strong and reliable, ensuring the stability of the entire gabion structure.

Material quality

Choose high-quality steel wire materials and perform galvanizing treatment to improve corrosion resistance and extend service life.

Mesh size

Strictly control the mesh size of the gabion net to adapt to the needs of different projects and ensure the stability of the filled stones.

Specification requirements

According to the engineering design and requirements, ensure that the specifications of galvanized gabion mesh meet relevant standards.

Surface treatment

Galvanized to improve the corrosion resistance of the product and adapt to different environmental conditions.

Tensile strength

Test the tensile strength of the product to ensure that it can maintain sufficient strength under the action of external forces.

Appearance inspection

Inspect the appearance of the product to ensure that the solder joints are uniform and have no obvious defects to improve the overall aesthetics.

Installation structure

Provide clear installation structure drawings to ensure correct installation during construction and achieve the design effect.

◆ Applicable scene

Galvanized gabion mesh is widely used in river regulation, environmental landscaping, transportation infrastructure and other fields, and is used in engineering projects such as slope protection, protection and soil stabilization.

◆ Installation method

It can be fixed through connectors or support frames. The specific installation method will be designed according to actual needs and engineering conditions.

◆ Precautions

Storage

It needs to be stored in a dry and ventilated place before installation to avoid prolonged moisture.

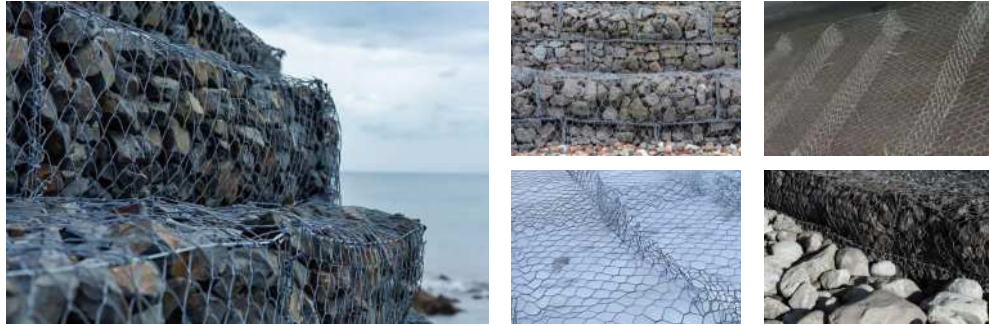
Protection

Pay attention to protect the product surface during transportation and installation to prevent scratches and damage.

Packaging materials: Use waterproof and anti-corrosion packaging materials, usually plastic films, woven bags, etc., to protect products from the external environment.

Packaging method: Stack the galvanized gabions neatly to avoid extrusion and deformation, and appropriately strengthen the support of key parts to reduce damage during transportation.

◆ Renault



Renault net, also known as "reinforced ground net" or "impact protection net", is a special grid structure used for slope protection, soil and rock collapse prevention and reinforcement projects. It is made of high-strength, low-deformation steel wires that are mechanically woven or welded. It has high tensile strength and corrosion resistance and is widely used in geotechnical, transportation, water conservancy and other engineering fields.

◆ Specification

Material

Low carbon steel wire.

Diameter data

Common diameter range is 2.0mm to 4.0mm, which can be customized according to project requirements.

◆ Dimensional

Dimensional data

Common grid sizes are 50mm × 50mm to 200mm × 200mm. The specific size can be customized according to project requirements.

Surface treatment

Hot-dip galvanizing, electro-galvanizing, PVC coating, etc. can be selected to improve corrosion resistance.

Color

Silver white, green, etc. Different colors can be customized according to customer needs.

Customization

Materials, sizes, and surface treatments can be customized according to specific needs.

◆ Quality Control

Welding process

We use advanced electric welding technology to ensure that each welding point is strong and reliable to ensure the structural stability of the entire Reno network.

Material quality

We select high-quality steel wire materials and galvanize them to improve corrosion resistance and extend service life.

Mesh size

Strictly control the mesh size of the Reno mesh to meet the needs of different projects and ensure the stability of the filling material.

Specification requirements

According to engineering design and standards, ensure that the specifications of Renault Network meet relevant requirements to ensure product quality.

Surface treatment

Galvanizing treatment to improve the corrosion resistance of the product, adapt to different environmental conditions, and ensure long-term use is not affected.

Tensile strength

Test the tensile strength of the product to ensure that it can maintain sufficient strength under the action of external forces.

Appearance inspection

Check the appearance of the product to ensure that the solder joints are uniform and have no obvious defects to improve the overall aesthetics.

Installation structure

Provide clear installation structure drawings to ensure correct installation during construction and achieve the design effect.

◆ Applicable scene

It is mainly used in mountain engineering, soil and water conservation, road protection, tunnel support, landscaping and other fields to play a role in reinforcement and protection.

◆ Installation method

Mechanical weaving or welding installation can be selected according to specific project needs to ensure that the Reno mesh is stable and reliable.

◆ Precautions

Storage

It needs to be stored in a dry and ventilated place before installation to avoid prolonged moisture.

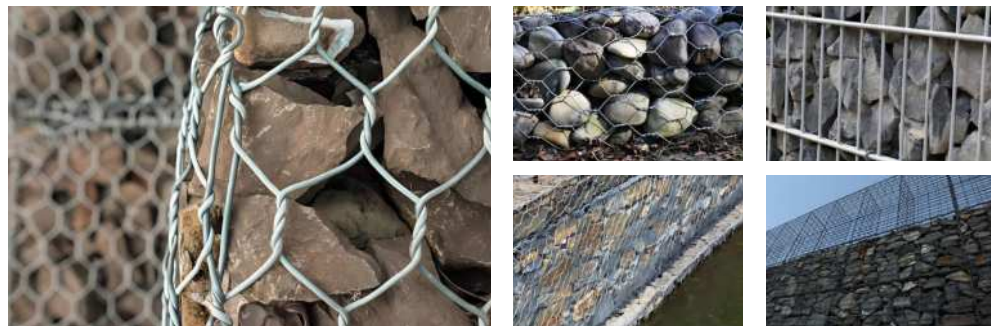
Protection

Pay attention to protecting the product surface during installation to prevent scratches and damage.

Packaging materials: Use waterproof and anti-corrosion packaging materials, such as plastic films, woven bags, etc., to protect the Reno mesh from the external environment.

Packaging method: Stack the Reno mesh neatly to avoid extrusion and deformation, strengthen the support of key parts, and reduce damage during transportation.

◆ Gabion



Gabion mesh is a mesh structure woven from galvanized or PVC galvanized steel wire. It is usually used in earth and rock engineering, river protection, environmental management and other fields. It has a simple structure and is easy to install. It can effectively prevent soil and rock collapse, bank protection, and slope protection. It has good water permeability and is widely used in various civil engineering projects.

◆ Specification

Material

Low carbon steel wire.

Diameter data

Usually the diameter range is 2.0mm to 4.0mm, the specific diameter can be customized according to engineering requirements.

◆ Dimensional

Dimensional data

Common grid sizes are 50mm × 50mm to 200mm × 200mm, which can also be customized according to project needs.

Surface treatment

Hot-dip galvanizing, electro-galvanizing, PVC coating, etc. can be selected to improve the corrosion resistance of the product.

Color

Silver white, green, etc. Different colors can be customized according to customer needs.

Customization

Materials, sizes, and surface treatments can be customized according to specific needs.

◆ Quality Control

Welding process

Use advanced electric welding technology to ensure that each welding point is strong and reliable to ensure the structural stability of the entire gabion net.

Material quality

Choose high-quality steel wire materials and perform galvanizing treatment to improve corrosion resistance and extend service life.

Mesh size

Strictly control the mesh size of the gabion net to meet the needs of different projects and ensure the stability of the filled stones.

Specification requirements

According to the engineering design and requirements, ensure that the specifications of the gabion mesh comply with relevant standards to ensure product quality.

Surface treatment

Galvanizing treatment to improve the corrosion resistance of the product and adapt to different environmental conditions.

Tensile strength

Test the tensile strength of the product to ensure that it can maintain sufficient strength under the action of external forces.

Appearance inspection

Inspect the appearance of the product to ensure that the solder joints are uniform and have no obvious defects to improve the overall aesthetics.

Installation structure

Provide clear installation structure drawings to ensure correct installation during construction and achieve the design effect.

◆ Applicable scene

It is mainly used in river protection, earth and rock engineering, slope and bank protection, environmental management and other fields to provide a stable earth and rock structure for projects.

◆ Installation method

Gabion mesh is easy to install. The gabion cage can be fixed at the location that needs protection through connectors. It can also be specially designed and installed according to project needs.

◆ Precautions

Storage

It needs to be stored in a dry and ventilated place before installation to avoid prolonged moisture.

Protection

Pay attention to protecting the product surface during installation to prevent scratches and damage.

Packaging materials: Use waterproof and anti-corrosion packaging materials, usually plastic films, woven bags, etc., to protect products from the external environment.

Packaging method: Stack the gabions neatly to avoid extrusion and deformation, and appropriately strengthen the support of key parts to reduce damage during transportation.

◆ Gabion cage



Gabion cage is a box-like structure woven from galvanized or PVC galvanized steel wire. It is usually used in earth and rock engineering, river protection, environmental management and other fields. It adopts an open design and has good water permeability, which can effectively prevent earth and rock collapse, protect banks, and protect slopes, and plays an important role in water conservancy, transportation, environmental protection and other projects.

◆ Specification

Material

Low carbon steel wire.

Diameter data

Usually the diameter range is 2.0mm to 4.0mm, the specific diameter can be customized according to engineering requirements.

◆ Dimensional

Dimensional data

Common grid sizes are 50mm × 50mm to 200mm × 200mm, which can also be customized according to project needs.

Surface treatment

Hot-dip galvanizing, electro-galvanizing, PVC coating, etc. can be selected to improve the corrosion resistance of the product.

Color

Silver white, green, etc. Different colors can be customized according to customer needs.

Customization

Materials, sizes, and surface treatments can be customized according to specific needs.

◆ Quality Control

Welding process

Use advanced electric welding technology to ensure that each welding point is strong and reliable to ensure the structural stability of the entire gabion cage.

Material quality

Choose high-quality steel wire materials and perform galvanizing treatment to improve corrosion resistance and extend service life.

Mesh size

Strictly control the mesh size of the gabion cage to meet the needs of different projects and ensure the stability of the filled stones.

Specification requirements

According to the engineering design and requirements, ensure that the specifications of the gabion cage meet relevant standards to ensure product quality.

Surface treatment

Galvanizing treatment to improve the corrosion resistance of the product and adapt to different environmental conditions.

Tensile strength

Test the tensile strength of the product to ensure that it can maintain sufficient strength under the action of external forces.

Appearance inspection

Inspect the appearance of the product to ensure that the solder joints are uniform and have no obvious defects to improve the overall aesthetics.

Installation structure

Provide clear installation structure drawings to ensure correct installation during construction and achieve the design effect.

◆ Applicable scene

It is mainly used in river protection, earth and rock engineering, slope and bank protection, environmental management and other fields to provide a stable earth and rock structure for projects.

◆ Installation method

Gabion cages are easy to install. The gabion cages can be fixed at the location that needs protection through connectors. They can also be specially designed and installed according to project needs.

◆ Precautions

Storage

It needs to be stored in a dry and ventilated place before installation to avoid prolonged moisture.

Protection

Pay attention to protecting the product surface during installation to prevent scratches and damage.

Packaging materials: Use waterproof and anti-corrosion packaging materials, usually plastic films, woven bags, etc., to protect products from the external environment.

Packaging method: Stack the gabion cages neatly to avoid extrusion and deformation, and appropriately strengthen the support of key parts to reduce damage during transportation.



Net rope series

Including Stainless steel braided mesh rope, Stainless steel aluminum buckle mesh rope, Stainless steel aluminum buckle mesh rope, Metal chain door curtain

Welcome to communicate with us at any time!

◆ 01. Stainless steel braided mesh rope

142-143



◆ 02. Stainless steel braided mesh rope

144-145



◆ 03. Stainless steel aluminum buckle mesh rope

146-147



◆ 04. Stainless steel aluminum buckle mesh rope

148-149



◆ 05. Metal chain door curtain

150-151



WeChat:+8613373483555



Telephone:+8613373483555



Address:No. 9-1, Shuguang Street, West District, Raoyang County Economic Development Zone, Hengshui City, Hebei Province



Email:info@hl-metalmesh.com

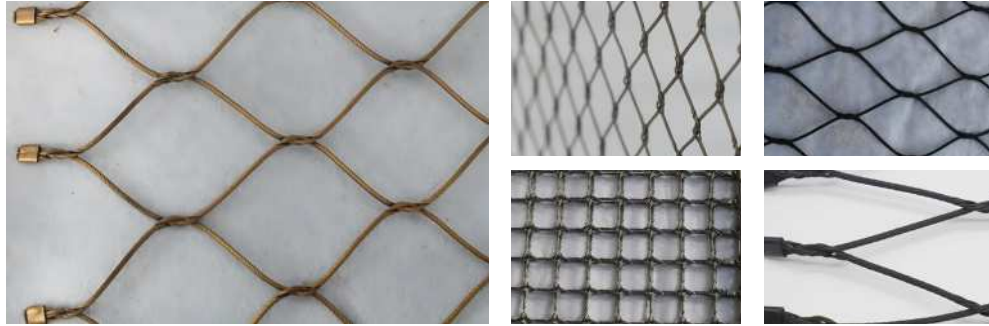


WhatsApp:+8619932376137



Website:hl-metalmesh.com

◆ Stainless steel braided mesh rope



Stainless steel braided mesh rope is a soft and strong rope woven from stainless steel wire. It has the characteristics of corrosion resistance, high temperature resistance and high tensile strength. It is widely used in navigation, construction, decoration and other fields, and can be customized according to customer needs.

◆ Specification

Material

Made of high-quality stainless steel wire to ensure the product has excellent weather resistance and corrosion resistance.

Diameter data

Provides a variety of diameter options to meet the needs of different application scenarios.

◆ Dimensional

Dimensional data

Stainless steel braided mesh ropes of different sizes can be provided according to customers' specific requirements.

Surface treatment

Surface treatment makes the product smoother, stronger and improves durability.

Color

Common colors include silver, which can also be customized according to customer needs.

Customization

Materials, sizes, surface treatments, etc. can be customized according to the specific needs of customers.

◆ Quality Control

Packaging materials

Use waterproof and anti-corrosion packaging materials, usually plastic films, foam boards, etc., to protect the

cylindrical filter from the external environment during transportation.

Packaging method

Reasonably package the cylindrical filter to avoid extrusion and collision to ensure that the product is not deformed or damaged during transportation.

Clear labeling

Clearly mark the specifications, quantity, material and other information of the product on the packaging to facilitate users to check when receiving the goods.

Transportation method

Choose the appropriate transportation method according to the size and weight of the cylindrical filter, such as land transportation, sea transportation or air transportation, to ensure that the product reaches its destination safely.

Protective measures

Add appropriate cushioning materials to the packaging to reduce vibration and impact during transportation and improve the safety of the product during transportation.

◆ Applicable scene

Stainless steel braided mesh rope is suitable for hoisting, ship rigging, architectural decoration, protective netting and other fields, especially in scenes with high requirements for corrosion resistance and high strength.

◆ Installation method

During installation, you can choose the appropriate ligation method according to specific needs, such as rope connection, hanging, etc., to ensure safety and reliability.

◆ Precautions

Storage

Avoid moisture during storage, maintain ventilation, and prevent corrosion on the surface of the stainless steel braided mesh rope.

Protection

Friction and impact must be avoided during use to prevent damage to the rope surface.

Packaging materials: Use waterproof and anti-corrosion packaging materials, usually plastic films, woven bags, etc., to protect the products from the external environment.

Packaging method: Coil or stack the woven mesh rope neatly to avoid excessive squeezing and bending to prevent product deformation or damage.

◆ Stainless steel braided mesh rope



Stainless steel braided mesh rope is a soft and strong rope woven from stainless steel wire. It has the characteristics of corrosion resistance, high temperature resistance and high tensile strength. It is widely used in navigation, construction, decoration and other fields, and can be customized according to customer needs.

◆ Specification

Material

Made of high-quality stainless steel wire to ensure the product has excellent weather resistance and corrosion resistance.

Diameter data

Provides a variety of diameter options to meet the needs of different application scenarios.

◆ Dimensional

Dimensional data

Stainless steel buckle mesh ropes of different sizes can be provided according to the specific requirements of customers.

Surface treatment

Surface treatment makes the product smoother, stronger and improves durability.

Color

Common colors include silver, which can also be customized according to customer needs.

Customization

Materials, sizes, surface treatments, etc. can be customized according to the specific needs of customers.

◆ Quality Control

Packaging materials

Use high-quality stainless steel wire to ensure its corrosion resistance and tensile strength to adapt to use in

different environments and improve the durability of the product.

Buckling technology

Advanced buckling technology is used to ensure the firmness and reliability of each buckle and improve the stability of the overall mesh rope structure.

Diameter data control

Precisely control the diameter of stainless steel wire to ensure the strength and stability of the buckle mesh rope and meet product design and use requirements.

Surface treatment

Surface treatment, such as galvanizing or other anti-corrosion treatments, improves the corrosion resistance of the product and adapts to use under different environmental conditions.

Customized services

Provide services that can be customized according to customer needs, including the selection of different materials, diameters and buckle styles to meet the needs of special scenarios.

◆ Applicable scene

Stainless steel buckle mesh ropes are suitable for construction hoisting, decorative rigging, protective nets and other fields, especially in scenes that require high corrosion resistance and high strength.

◆ Installation method

The snap-on connection method is used during installation to ensure safety and reliability. Choose the appropriate ligation method according to specific needs, such as rope connection, hanging, etc.

◆ Precautions

Storage

Avoid moisture during storage, maintain ventilation, and prevent corrosion on the surface of the stainless steel buckle mesh rope.

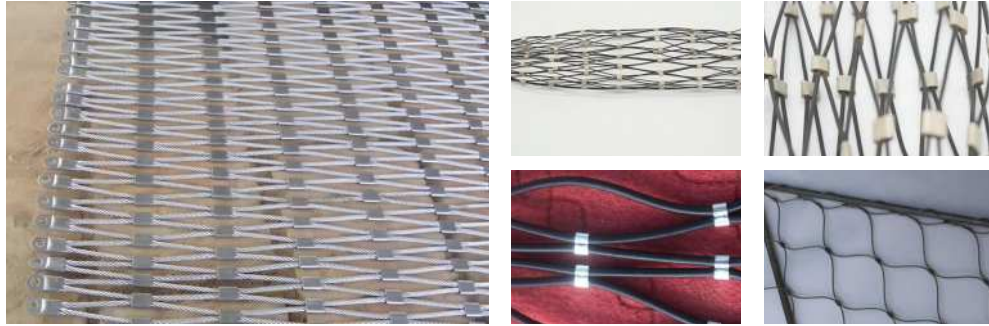
Protection

Friction and impact must be avoided during use to prevent damage to the surface of the mesh rope.

Packaging materials: Use waterproof and anti-corrosion packaging materials, usually plastic films, woven bags, etc., to prevent the product from being affected by the external environment.

Packaging method: Coil or stack the buckle mesh rope neatly to avoid excessive extrusion and bending to prevent product deformation or damage.

◆ Stainless steel aluminum buckle mesh rope



Stainless steel aluminum buckle mesh rope is a rope product used in specific scenarios. It combines materials such as stainless steel and aluminum buckles and has the characteristics of corrosion resistance, high strength and lightweight. The rope is widely used in hoisting, fixing, decoration and other fields, aiming to provide reliable support and connection solutions.

◆ Specification

Material

Made of high-quality stainless steel and aluminum buckles to ensure the durability and stability of the product.

Diameter data

Ropes of different diameters can be provided according to customer needs to adapt to the use requirements of different scenarios.

◆ Dimensional

Dimensional data

The length and width of the rope can be adjusted according to specific needs when customizing.

Surface treatment

The surface has been specially treated to have good corrosion resistance and increase the service life of the product.

Color

Provides a variety of color options to meet the aesthetic needs of different customers.

Customization

Materials, sizes, surface treatments, etc. can be customized according to specific needs to ensure that the product fully meets customer requirements.

◆ Quality Control

Material selection

Use high-quality stainless steel wire and aluminum buckles to ensure its corrosion resistance, tensile strength and lightweight properties to adapt to use in different environments and improve the durability of the product.

Aluminum buckle technology

Advanced aluminum buckle technology is used to ensure the firmness and reliability of each aluminum buckle, improve the stability of the overall mesh rope structure, and ensure that the connection is firm and not easy to fall off.

Diameter data control

Precisely control the diameter of stainless steel wire to ensure the strength and stability of the aluminum buckle mesh rope and meet product design and use requirements.

Surface treatment

Carry out surface treatment, such as galvanizing stainless steel wire or other anti-corrosion treatments, to improve the corrosion resistance of the product and adapt to use under different environmental conditions.

Lightweight design

Aluminum buckle mesh ropes focus on lightweight design to ensure the convenience of the product in hanging or application scenarios while maintaining sufficient strength.

Customized services

Aluminum buckle mesh ropes focus on lightweight design to ensure the convenience of the product in hanging or application scenarios while maintaining sufficient strength.

◆ Applicable scene

Stainless steel aluminum buckle mesh ropes are suitable for various scenarios, including but not limited to: hoisting operations, fixtures, decorative hangings, and other applications that require firm connections.

◆ Installation method

According to actual needs, simple and reliable connection can be made through aluminum buckles. The flexible installation method makes it suitable for a variety of scenarios, ensuring convenient and quick use.

◆ Precautions

Storage

It is recommended to store in a cool, dry environment, away from direct sunlight and moisture.

Protection

During use, be careful to avoid friction between the rope and sharp objects to prevent damage.

Pay attention to safety

Please ensure the safety of the product when using it and follow the correct usage methods and regulations.

Packaging materials: Use lightweight, waterproof, and anti-corrosion packaging materials, usually plastic films, woven bags, etc., to prevent the product from being affected by the external environment.

Packaging method: Wind or stack the aluminum buckle mesh rope neatly to avoid excessive extrusion and bending to prevent product deformation or damage.

◆ Stainless steel seamless buckle mesh rope



Stainless steel seamless mesh rope is a high-strength, corrosion-resistant connecting rope made of stainless steel and has the characteristics of seamless connection. Suitable for various fields, such as hoisting, fixing, ropeway, etc., aiming to provide reliable support and connection solutions.

◆ Specification

Material

Use high-quality stainless steel to ensure the product has excellent corrosion resistance and high strength.

Diameter data

Seamless mesh ropes of different diameters can be provided according to customer needs to adapt to the use requirements of different scenarios.

◆ Dimensional

Dimensional data

The length and width of the rope can be adjusted according to specific needs when customizing.

Surface treatment

The surface is specially treated to increase the wear resistance of the product and extend its service life.

Color

Common colors include silver, black, etc., which can be customized according to customer needs.

Customization

Materials, sizes and surface treatments can be customized according to specific needs to meet the special needs of different customers.

◆ Quality Control

Material selection

Use high-quality stainless steel wire to ensure its corrosion resistance and tensile strength to adapt to use in different environments and extend the service life of the product.

Seamless technology

Advanced seamless technology is adopted to ensure the uniformity and tightness of the overall mesh rope structure and improve the stability and safety of the product.

Diameter data control

Precisely control the diameter of the stainless steel wire to ensure the strength and stability of the seamless mesh rope and meet product design and use requirements.

Surface treatment

Carry out surface treatment, such as galvanizing stainless steel wire or other anti-corrosion treatments, to improve the corrosion resistance of the product and adapt to use under different environmental conditions.

Wear resistance testing

Test the wear resistance of the product to ensure that it is not easily damaged during use and maintains good long-term use.

Tensile strength test

Conduct a tensile strength test to ensure that the product can withstand external forces and maintain sufficient strength.

Customized services

Provide services that can be customized according to customer needs, including the selection of different materials, diameters, and lengths to meet the needs of special scenes.

◆ Applicable scene

Stainless steel seamless mesh ropes are suitable for various scenarios, including but not limited to: hoisting operations, fixtures, ropeway transportation, and other applications that require firm connections.

◆ Installation method

According to the needs of system design, seamless mesh ropes can be connected through lifting rings, bolts, etc. to ensure a strong and reliable connection.

◆ Precautions

Storage

It is recommended to avoid being squeezed during storage to prevent deformation from affecting the use effect.

Protection

Care must be taken during use to avoid scratches and damage.

Pay attention to safety

Please ensure the safety of the product when using it and follow the correct usage methods and regulations.

Packaging materials: Use lightweight, waterproof, and anti-corrosion packaging materials, usually plastic films, woven bags, etc., to prevent the product from being affected by the external environment.

Packaging method: Coil or stack the seamless mesh rope neatly to avoid excessive extrusion and bending to prevent product deformation or damage.

◆ Metal chain door curtain



Metal chain door curtain is a highly decorative, breathable and durable door and window decoration product. Made of high-quality stainless steel or aluminum alloy, with a unique hanging chain design, it has a fashionable and modern feel and is suitable for commercial stores, home doors and windows, etc. Its unique hanging chain structure not only gives the door curtain a good decorative effect, but also maintains ventilation. It is a functional and beautiful decoration.

◆ Specification

Material

Use high-quality stainless steel to ensure the product has excellent corrosion resistance and high strength.

Diameter data

Seamless mesh ropes of different diameters can be provided according to customer needs to adapt to the use requirements of different scenarios.

◆ Dimensional

Dimensional data

The length and width of the rope can be adjusted according to specific needs when customizing.

Surface treatment

The surface is specially treated to increase the wear resistance of the product and extend its service life.

Color

Common colors include silver, black, etc., which can be customized according to customer needs.

Customization

Materials, sizes and surface treatments can be customized according to specific needs to meet the special needs of different customers.

◆ Quality Control

Material selection

Use high-quality stainless steel wire to ensure its corrosion resistance and tensile strength to adapt to use in different environments and extend the service life of the product.

Seamless technology

Advanced seamless technology is adopted to ensure the uniformity and tightness of the overall mesh rope structure and improve the stability and safety of the product.

Diameter data control

Precisely control the diameter of the stainless steel wire to ensure the strength and stability of the seamless mesh rope and meet product design and use requirements.

Surface treatment

Carry out surface treatment, such as galvanizing stainless steel wire or other anti-corrosion treatments, to improve the corrosion resistance of the product and adapt to use under different environmental conditions.

Wear resistance testing

Test the wear resistance of the product to ensure that it is not easily damaged during use and maintains good long-term use.

Tensile strength test

Conduct a tensile strength test to ensure that the product can withstand external forces and maintain sufficient strength.

Customized services

Provide services that can be customized according to customer needs, including the selection of different materials, diameters, and lengths to meet the needs of special scenes.

◆ Applicable scene

Stainless steel seamless mesh ropes are suitable for various scenarios, including but not limited to: hoisting operations, fixtures, ropeway transportation, and other applications that require firm connections.

◆ Installation method

According to the needs of system design, seamless mesh ropes can be connected through lifting rings, bolts, etc. to ensure a strong and reliable connection.

◆ Precautions

Storage

It is recommended to avoid being squeezed during storage to prevent deformation from affecting the use effect.

Protection

Care must be taken during use to avoid scratches and damage.

Pay attention to safety

Please ensure the safety of the product when using it and follow the correct usage methods and regulations.

Packaging method: Coil or stack the seamless mesh rope neatly to avoid excessive extrusion and bending to prevent product deformation or damage.



Wire series

Including Tying wire, Galvanized wire, Black annealed wire, Plastic coated wire, Oval silk

Welcome to communicate with us at any time!

◆ 01. Tying wire

154-155



◆ 02. Galvanized wire

156-157



◆ 03. Black annealed wire

158-159



◆ 04. Plastic coated wire

160-161



◆ 05. Oval silk

162-163



WeChat: +8613373483555

Email: info@hl-metalmesh.com

Website: hl-metalmesh.com

Telephone: +8613373483555

WhatsApp: +8619932376137

Address: No. 9-1, Shuguang Street, West District, Raoyang County Economic Development Zone, Hengshui City, Hebei Province

◆ Tying wire



Tying wire is a metal wire product used in construction, gardening, transportation and other fields. It is mainly used for binding, fixing, connecting and other operations. Its high-quality materials and exquisite craftsmanship enable it to perform well in various application scenarios.

◆ Specification

Material

Low carbon steel wire.

Diameter data

Provides a variety of diameter options to meet the needs of different application scenarios.

◆ Dimensional

Dimensional data

Stainless steel buckle mesh ropes of different sizes can be provided according to the specific requirements of customers.

Surface treatment

Surface treatment makes the product smoother, stronger and improves durability.

Color

Common colors include silver, which can also be customized according to customer needs.

Customization

Materials, sizes, surface treatments, etc. can be customized according to the specific needs of customers.

◆ Quality Control

Material selection

Use high-quality stainless steel wire to ensure its corrosion resistance and tensile strength to adapt to use in different environments and improve the durability of the product.

Buckling technology

Advanced buckling technology is used to ensure the firmness and reliability of each buckle and improve the stability of the overall mesh rope structure.

Surface treatment

Surface treatment, such as galvanizing or other anti-corrosion treatments, improves the corrosion resistance of the product and adapts to use under different environmental conditions.

Customized services

Provide services that can be customized according to customer needs, including the selection of different materials, diameters and buckle styles to meet the needs of special scenarios.

◆ Applicable scene

Stainless steel buckle mesh ropes are suitable for construction hoisting, decorative rigging, protective nets and other fields, especially in scenes that require high corrosion resistance and high strength.

◆ Installation method

The snap-on connection method is used during installation to ensure safety and reliability. Choose the appropriate ligation method according to specific needs, such as rope connection, hanging, etc.

◆ Precautions

Storage

Avoid moisture during storage, maintain ventilation, and prevent corrosion on the surface of the stainless steel buckle mesh rope.

Protection

Friction and impact must be avoided during use to prevent damage to the surface of the mesh rope.

Packaging materials: Use waterproof and anti-corrosion packaging materials, usually plastic films, woven bags, etc., to prevent the product from being affected by the external environment.

Packaging method: Coil or stack the buckle mesh rope neatly to avoid excessive extrusion and bending to prevent product deformation or damage.

◆ Galvanized wire



Galvanized wire is a product that is coated with a layer of zinc on the surface of the wire through an electroplating process. The purpose of galvanizing is to improve the corrosion resistance of the iron wire and increase its service life. Galvanized wire is widely used in construction, agriculture, animal husbandry, transportation, furniture and other fields.

◆ Specification

Material

Low carbon steel wire.

Diameter data

Common diameters range from 0.5mm to 4.0mm, which can be customized according to customer needs.

◆ Dimensional

Dimensional data

Generally divided into two forms: reel and straight strip. The length and weight of the reel can be customized.

Surface treatment

Electro-galvanized

Color

silver white.

Customization

Can be customized according to the specific needs of customers, such as special materials, sizes and surface treatments, etc.

◆ Quality Control

Material selection

Use high-quality steel as raw material to ensure the strength and corrosion resistance of galvanized wire.

Galvanizing process

The advanced hot-dip galvanizing process is used to ensure that the surface of the wire is evenly covered with a zinc layer and improve corrosion resistance.

Diameter accuracy

Conduct diameter accuracy testing to ensure that the galvanized wire meets the specified diameter standards and meets customer needs.

Tensile Strength

The galvanized wire is tested for tensile strength to ensure it has sufficient strength for various applications.

Surface finish

Carry out surface finish testing to ensure that the surface of the wire material is smooth and without obvious defects, thereby improving the aesthetics of the product.

◆ Applicable scene

Galvanized wire is suitable for bundling, weaving, fence making and other fields in construction, agriculture, and animal husbandry.

◆ Installation method

Different installation methods can be selected according to specific uses, such as bundling, weaving, welding, etc.

◆ Precautions

Storage

Store in a dry and ventilated environment to avoid prolonged moisture.

Protection

During transportation and use, pay attention to prevent scratches and damage.

Packaging materials: Use packaging materials that meet transportation standards, such as plastic bags, cartons, etc., to protect the galvanized wire from the external environment.

Packaging method: Bundle or roll the galvanized wire neatly to avoid being scattered during transportation and reduce the possibility of damage.

◆ Black annealed wire



Black annealed wire is a wire that has been heated and cooled to give it a black appearance. It has certain toughness and corrosion resistance and is suitable for various industrial and construction fields.

◆ Specification

Material

Low carbon steel wire.

Diameter data

Common diameter ranges from 0.2mm to 5.0mm, which can be customized according to customer needs.

◆ Dimensional

Dimensional data

Customized according to diameter and length requirements.

Surface treatment

Black annealing treatment is used to improve surface hardness and durability.

Color

Black.

Customization

Can be customized according to the specific needs of customers, such as special materials, sizes and surface treatments, etc. surface treatments, etc.

◆ Quality Control

Material selection

Use high-quality raw materials to ensure that the black annealed wire is pure and has good electrical conductivity and mechanical properties.

Diameter data control

Through precise production technology, the diameter of the black annealed wire is controlled to ensure that the product meets the design and standard requirements.

Dimensional data detection

Detection of dimensional data, including wire diameter, length, etc., to ensure that the dimensions of the product are accurate and meet the specific needs of customers.

Surface treatment

Carry out surface treatment with black annealing line to ensure that the product surface is smooth and free of oxide layer, improving corrosion resistance.

Color consistency

Through strict process control, the color of the black annealed wire is guaranteed to be consistent and meet the aesthetic requirements of customers.

◆ Applicable scene

Black annealed wire is commonly used in construction, electrical equipment, gardening weaving and other fields, and is suitable for occasions where a black appearance and a certain strength are required.

◆ Installation method

The installation method depends on the specific use, and you can choose weaving, fixing, etc.

◆ Precautions

Storage

Store in a dry and ventilated environment to avoid prolonged moisture.

Protection

During transportation and use, pay attention to prevent scratches and damage.

Packaging materials: Choose packaging materials suitable for black annealing lines, such as plastic rolls, cartons, etc., to ensure that the product is not damaged during the packaging process.

Packaging method: Coil or bundle the black annealed wire neatly to avoid mess and deformation during transportation.

◆ Plastic coated wire



Plastic-coated wire is a wire with a plastic-coated surface. Its corrosion resistance and weather resistance are improved by coating the surface of the wire with plastic. It has excellent weather resistance and anti-corrosion properties and is widely used in construction, gardens, fences and other fields.

◆ Specification

Material

Low carbon steel wire.

Diameter data

Common diameter ranges from 0.5mm to 5.0mm, which can be customized according to customer needs.

◆ Dimensional

Dimensional data

Customized according to diameter and length requirements.

Surface treatment

Plastic coating is used to improve the corrosion resistance and weather resistance of the wire.

Color

A variety of colors are available, common colors include green, blue, red, etc.

Customization

Can be customized according to the specific needs of customers, such as special materials, sizes and surface treatments, etc.

◆ Quality Control

Material selection

Choose high-quality metal wire materials, such as galvanized wire, to ensure it has good corrosion resistance and mechanical strength.

Diameter data control

Through strict production processes, the diameter of the plastic-coated wire is controlled to ensure that the product meets the design and standard requirements.

Coating uniformity

During the plastic coating process, it is necessary to ensure that the coating is uniform and firmly adhered to improve the anti-corrosion performance and aesthetics of the product.

Surface treatment

After plastic coating, surface treatment is performed to ensure that the product surface is smooth, thorn-free, and burr-free to improve safety.

Color consistency

By controlling the paint ratio and uniform coating, the color of the plastic-coated wire is guaranteed to be consistent and meet the aesthetic requirements of customers.

◆ Applicable scene

Plastic-coated wire is widely used in construction, gardening, agriculture, fences and other fields, and is suitable for occasions that require a certain degree of corrosion resistance and aesthetics.

◆ Installation method

The installation method depends on the specific use, and you can choose weaving, fixing, etc.

◆ Precautions

Storage

Store in a dry and ventilated environment to avoid prolonged moisture.

Protection

During transportation and use, pay attention to prevent scratches and damage.

Packaging materials: Use packaging materials suitable for plastic-coated wire, such as plastic rolls, cartons, etc., to ensure that the product is not damaged during the packaging process.

Packaging method: Wrap or bundle the plastic-coated wire neatly to avoid mess and deformation during transportation.

◆ Oval silk



Plastic-coated wire is a wire with a plastic-coated surface. Its corrosion resistance and weather resistance are improved by coating the surface of the wire with plastic. It has excellent weather resistance and anti-corrosion properties and is widely used in construction, gardens, fences and other fields.

◆ Specification

Material

Low carbon steel wire.

Diameter data

Common diameter ranges from 1.0mm to 6.0mm, which can be customized according to customer needs

◆ Dimensional

Dimensional data

The size of the elliptical wire depends on the major and minor axes of the elliptical shape and can be customized according to customer needs

Surface treatment

You can choose different surface treatment methods, such as galvanizing, spraying, coating, etc.

Color

Color can be customized according to surface treatment.

Customization

Can be customized according to the specific needs of customers, such as special materials, sizes and surface treatments, etc. surface treatments, etc.

◆ Quality Control

Material selection

Use high-quality raw materials, such as high-quality steel, to ensure that the material of the elliptical wire is stable and has sufficient strength and corrosion resistance.

Galvanizing process

Precision manufacturing process is adopted to ensure that the shape of the elliptical wire is regular and the size is accurate, meeting the design requirements.

Diameter and cross-sectional size control

Precise detection of diameter and cross-sectional size is carried out to ensure that the elliptical wire meets the standard requirements to meet the customer's specific application needs.

Surface treatment

Surface treatment of elliptical wire, such as galvanizing, plastic spraying, etc., to improve its corrosion resistance and adapt to different environmental conditions.

Tensile strength test

Conduct a tensile strength test to ensure that the elliptical wire has sufficient strength to withstand the corresponding load.

◆ Applicable scene

Elliptical wire is widely used in construction, transportation, machinery manufacturing and other fields, and can be used to make various components, parts, fences, etc.

◆ Installation method

The installation method depends on the specific use, and you can choose welding, weaving, bundling, etc.

◆ Precautions

Storage

Store in a dry and ventilated environment to avoid prolonged moisture.

Protection

During transportation and use, pay attention to prevent scratches and damage.

Packaging materials: Use packaging materials that meet transportation standards, such as plastic films, cartons, etc., to protect the elliptical yarn from the external environment.

Packaging method: Bundle or roll the oval wire neatly to avoid being scattered during transportation and reduce the possibility of damage.