


# PRODUCT BROCHURE

 +86-19801998222

 [rockli@sunlikee.com](mailto:rockli@sunlikee.com)

 +86-19801998222

 Anxin County High tech Industrial Park,  
Xiong'an New Area, Hebei Province

 +19801998222



## Our Company



SUNLIKE is a manufacturer specializing in the production of slurry pumps, sewage pumps, filter press feed pumps and environmentally friendly greening equipment, including two major factories. Shijiazhuang Sunlike Environmental Protection Technology Co., Ltd. covers an area of 33,000 square meters and is located in Shijiazhuang City, the capital of Hebei Province, China. Baoding Sunlike Pump Manufacturing Co., Ltd. covers an area of 15,000 square meters and is located in Xiongan New District, Baoding City, Hebei Province, China. At present, SUNLIKE has won the titles of National Science and Technology Enterprise, Provincial Science and Technology Enterprise, Specialized and New Enterprise, High-tech Enterprise and Integrity Taxpaying Enterprise.

## Our Culture



### Corporate values

Quality first, reputation first



### Corporate policy

Powered by technology and driven by customers



### Service philosophy

Committed to providing customers with high-quality and high-standard services



## Our Honor





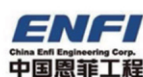
## Our patent





## INDUSTRY SOLUTIONS

Our products are widely used in mine dressing, river dredging, coal and sand washing, sewage treatment, food and pharmaceuticals, chemicals and other





## INTO SUNLIKE



**CNPC**  
中国石油



**MCC**  
中国中冶



**中国华能**  
CHINA HUANENG



中国华电集团有限公司  
CHINA HUADIAN CORPORATION LTD.



**ALLIANCE STEEL**



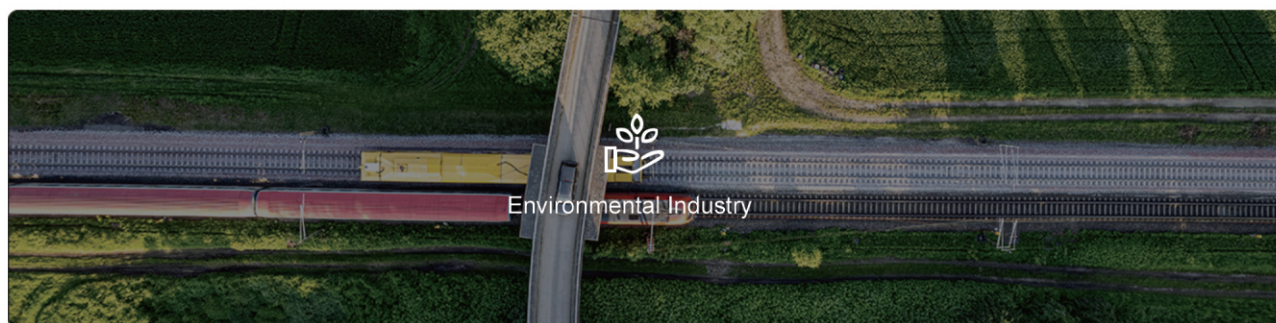
**GSM CHEMICAL**  
GENERIC SMART MATERIAL



**QS GROUP**  
EXPERIENCE BASED



**НОВЫЕ ГИДРОСИСТЕМЫ**



**中国节能**  
CHINA ENERGY CONSERVATION  
INVESTMENT CORPORATION



**ЭЛЕКТРОПРОМ**  
Электротехническая промышленная компания



**PAN AFRICAN**  
RESOURCES



**FLOW**  
TECHNOLOGIES



**Rusmine**  
Engineering



## FACTORY SHOW



Factory aerial photo



Factory aerial photo



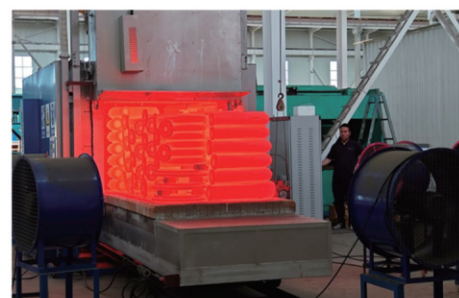
Factory aerial photo



Casting production line



Pouring



heat treatment



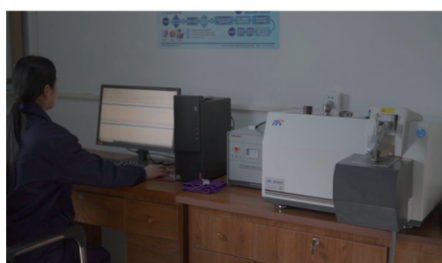
Machining workshop



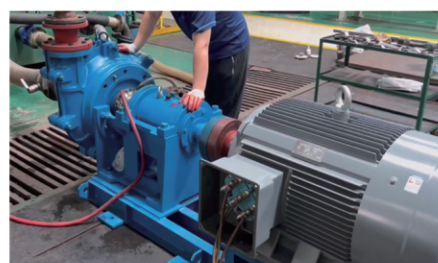
machining



assemble



Hyperspectral quality inspection



pump test



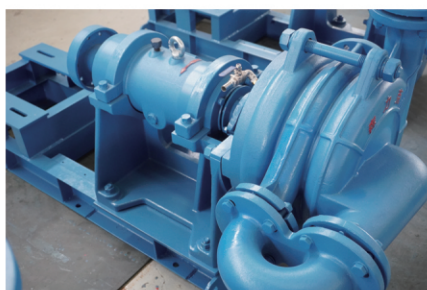
finish product

## SYAX double impeller filter press feed pump

SYAX filter press feed pump is a special feed pump for filter press designed and developed by using advanced fluid theory and combining the feed condition of each filter press. After a variety of coal washing, environmental protection, aluminum plant, smelting and other occasions to try, its performance has reached China's leading level, its filter effect, filtration time, sewage blocking, no leakage and the stability of the whole machine have been praised by users. It has played a positive role in promoting the efficiency of various users. The pump adopts double main impeller for positive and negative installation, and the resistance changes in the filter press during operation to achieve the purpose of large flow, low pressure feeding and small flow and high pressure filtration. Its special hydraulic performance coincides with the progressive process of the filter press from cavity to filling and then to filtration. At the beginning of feeding, no valve is used to control motor overload caused by excessive flow. When the pump is working under high pressure, the unique installation mode of impeller and the function of auxiliary impeller ensure that the shaft seal has no leakage. According to the requirements of the medium, you can choose packing seal, single end pack mechanical seal and double end pack mechanical seal (with water tank).



- ★ Flow: 10-370m<sup>3</sup>/h
- ★ Head: 20-160m
- ★ Power: 5.5-132kw
- ★ size: 12.5/25/50/65/80/100/120/125/160/150 mm
- ★ Provide metal parts



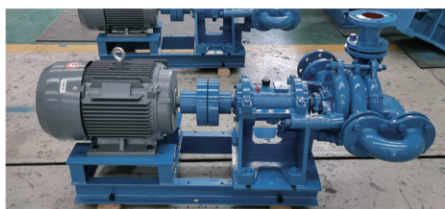


## SYB type filter press feed pump

SYB filter press feed pump is a new generation of filter press pump designed and developed by our company according to the working conditions of each filter press. Using negative pressure technology, two-stage semi-open impeller structure design, the maximum pressure of the pump can reach 1.6Mpa, suitable for high pressure filter press feed. It can transport a variety of materials with weak corrosion, hard particles and poor filterability for a long time, and other occasions that require high pressure and no plugging and no leakage. Widely used in pharmaceutical, sewage treatment, papermaking and other industries.



- ★ Flow: 12.5-50m<sup>3</sup>/h
- ★ Head: 65-160m
- ★ Power: 11-55kw
- ★ Size: 50/65/80



## SYQ type submersible filter press feed pump

SYQ special pump for submersible filter press is a new type of filter press feed pump developed according to the suction condition of underground tank, which solves the following problems: the operation failure of horizontal filter press feed pump due to cavitation damage, the low head of traditional submersible slurry pump, easy to overpower and the insertion depth of long-axis underwater slurry pump is insufficient. It is mainly used for sand and stone separation in cement mixing station, river dredging, steel mill sewage treatment, sand washing, mineral processing and other industries.

- ★ Flow: 20-125m<sup>3</sup>/h
- ★ Head: 25-75m
- ★ Lift: 18.5-45kw
- ★ Size: 65/80





### SZJG filter press feed pump

SZJG series slurry pump is a single stage, single suction, centrifugal slurry pump, according to the structure type is divided into horizontal (SZJ type) and vertical (SZJL type), product technical conditions in line with JB/T8096-1998 "centrifugal slurry pump" standard. This series of slurry pump has innovation in hydraulic design and structural design, and the flow parts are made of high chromium anti-wear white cast iron. It has the advantages of high efficiency, energy saving, long service life, light weight, reasonable structure, reliable operation, low vibration, low noise, easy maintenance and so on. It is suitable for conveying abrasive and corrosive slurry containing solid particles in electric power, metallurgy, coal, building materials and other industries.

- ★ Flow rate: 4-1826m<sup>3</sup>/h
- ★ Head: 2-128m
- ★ Power: 1.1-800kw
- ★ Size: 40-300 mm
- ★ Provide metal parts





## ZJR type filter press feed pump

ZJR type filter press special slurry pump is the second generation filter press special slurry pump designed and developed by our company for the leakage, noise and low efficiency of ordinary slurry pump in the process of use. The product is widely used in all kinds of impurities containing solid particles, especially suitable for coal washing, smelting, aluminum plant, mine tailings and other occasions of filter press feed. It overcomes the shortcomings of holding the pump, leakage and low efficiency when the ordinary slurry pump is pressing and filtering, and ensures that the pump is not overloaded in the full flow range. Sealing form is standard for packing combination seal and optional mechanical seal two forms. The special slurry pump for the filter press is mechanically sealed in the form of a unique double-end packed water tank. The overall structure of the pump is single, convenient installation and disassembly, which completely solves the inconvenience of using the traditional mechanical seal external high pressure water, ensures the safe operation of the pump, and can be applied to a variety of occasions.



- ★ Flow rate: 15-800m<sup>3</sup>/h
- ★ Head: 20-80m
- ★ Power: 22-200kw
- ★ Size: 50/65/80/100/150 mm
- ★ Provide metal parts



### SZJF foam pump

SZJF series foam slurry pump, based on ZJ, is designed to optimize the transportation of flotation foam in flotation operation. In order to improve the ability of conveying foam, the impeller and front protection plate are greatly improved, which has obvious advantages compared with the ordinary horizontal slurry pump in conveying the slurry containing foam. This series of products solves the problem of difficult conveying of foam pulp that has always existed in the mineral processing industry.



#### peculiarity

- 1, excellent foam mixing effect: SZJF foam pump is well designed, can effectively mix air and liquid, produce stable and uniform foam.
- 2, simple and durable structure: foam pump structure is simple, easy to operate and maintain, with a long service life.
- 3, high efficiency and energy saving: the use of advanced pump technology and materials, can save energy under high efficiency.
- 4, strong adaptability: suitable for a variety of different sizes and needs of foam application scenarios, such as fire, mining, chemical industry, sewage treatment, etc.
- 5, safe and reliable: the design meets the safety standards, the operation is stable and reliable, suitable for long time and high intensity use.

#### Product parameter

★ Flow: 32-480m<sup>3</sup>/h   ★ Lift: 12-24m   ★ Efficiency: 46-59%   ★ Size: 50/75/100/150/200mm

#### Application scenario

**Fire fighting:** In the field of fire fighting, SZJF foam pumps can be used in conjunction with fire pump systems for the injection and distribution of fire fighting foam to effectively extinguish fires.

**Mining industry:** In the mining and mining industry, foam pumps are often used to treat pulp containing solid particles, such as treating tailings and mine water.

**Chemical industry:** In chemical production, it can be used for foam separation, reaction mixing and material transportation, etc., to improve production efficiency and safety.

**Wastewater treatment:** In wastewater treatment plants, foam pumps can be used to mix and transport additives to help improve wastewater treatment and degradation efficiency.

**Other industrial applications:** In fields such as oilfield exploitation, Marine engineering and environmental engineering, foam pumps are also commonly used for a variety of specific liquid-solid separation and mixing processes.

In summary, SZJF foam pumps have a wide range of applications and market demand in a variety of industrial and emergency application scenarios because of their excellent mixing effect, durable structure, high efficiency and energy saving.





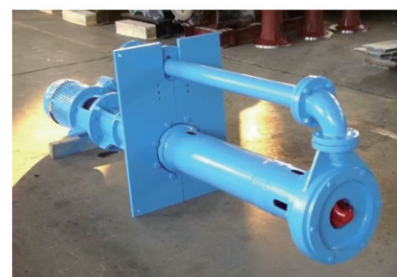
## SSP (R) Vertical slurry pump

Single shell structure, with light weight, small volume, easy to install and other advantages; Anti-wear parts made of high chromium alloy; The transmission shaft and suction pipe can be selected according to the liquid level of the slurry pool; Slurry pump agitator can be installed to improve conveying efficiency; Able to run smoothly at all speeds.

Suitable for conveying abrasive or corrosive slurry, the pump is generally immersed in the pool or pit work. Widely used in steel, metallurgy, petroleum, chemical, electric power, environmental protection, municipal, construction and other industries.



- ★ Flow rate: 17-1200m<sup>3</sup>/h
- ★ Head: 4-40m
- ★ Lift: 15-200kw
- ★ Caliber: 40-300mm
- ★ Material: high chromium alloy
- ★ Size: 40•65•100•150•200•250•300
- ★ Provide metal parts and rubber parts



## SSG gravel pump

SSG gravel pump is single stage, single suction, cantilever, horizontal structure. The pump body, the pump cover and the joint plate are connected by the clamp belt. The lubrication form is grease lubrication. It is mainly used for conveying strong abrasive materials whose particles are too large to be transported by general slurry pumps. Widely used in coal, electricity, transportation, river dredging, municipal engineering and other fields. This type of pump is suitable for conveying sand, mud and solid slurry with large particles, and is also used for river sand mining and mining vessels.

Pump and drive machine can choose direct transmission, triangular belt transmission, hydraulic coupling transmission, reducer transmission. The pump outlet direction can be in any position of 360°, with easy installation, good cavitation, abrasion resistance and other advantages. The inlet of each type of pump is horizontal, and the pump rotates according to the direction of transmission, and can also rotate counterclockwise according to the need.

- ★ Flow rate: 36-4320m<sup>3</sup>/h
- ★ Head: 5-80m
- ★ Power: 60-1200kw
- ★ Size: 100-400mm
- ★ Size: 6/4•8/6•10/8•12/10•14  
/12•16/14•18/16•20/18
- ★ Provide metal parts.





### SH(R)\_SM(R)\_SAH (R)\_SHH (R)\_SL (R) slurry pump

SH(R)\_SM(R)\_SAH(R) SHH (R)\_SL (R)) slurry pump, also known as heavy-duty slurry pump. Because the pump type has a thick bearing and heavy duty bracket, it is suitable for conveying strong corrosion, high concentration slurry or low concentration and high lift slurry, and can be used in series for multiple stages within the maximum allowable working pressure range of the pump. SHH type pump is suitable for conveying low concentration and high lift slurry or high concentration and low corrosion. The above several forms of pumps also have corrosion resistant slurry pumps, large particle slurry pumps or wear-resistant slurry pumps.



#### Product characteristics

- 1.The shaft seal of the SAH/SHH/SSM/SL type pump can be packed or centrifugal seal. The pump outlet position can be rotated at 45° intervals at eight different angles as required.
- 2.The pump has replaceable parts of different materials, replaceable materials are high chromium alloy, rubber, ceramic, polyurethane, etc., suitable for different working conditions.

- ★ Flow rate: 10-5400m<sup>3</sup>/h
- ★ Head: 5-100m
- ★ Power: 15-1200kw
- ★ Size: 1½/1•2/1½•3/2•4/3•6/4•8/6



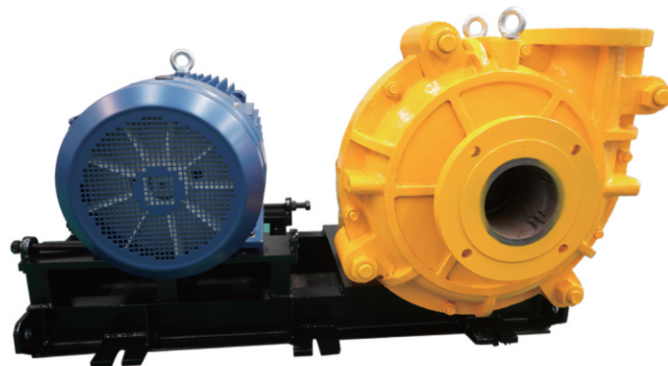


## SZJC ceramic slurry pump

SSZJC ceramic slurry pump is a new generation of corrosion-resistant and wear-resistant slurry pump independently developed by our company using modern composite ceramic technology and non-metallic casting technology. The pump is a horizontal single-stage single-suction centrifugal slurry pump, axial suction, radial discharge, bracket support, bearing grease lubrication or thin oil lubrication two ways.

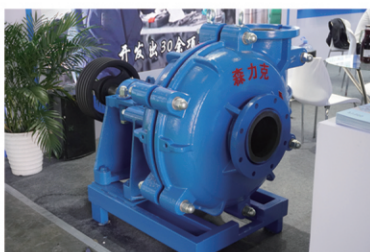
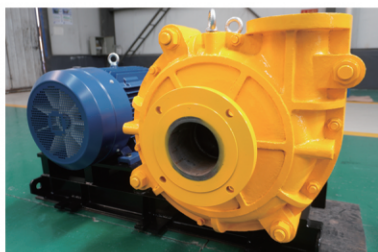
The shaft seal has three sealing forms: auxiliary impeller seal, packing seal and mechanical seal.

The pump has high efficiency, stable operation, high reliability, long service life, in the mine abrasion condition, the service life of the ceramic pump is 4-6 times that of the metal, to meet the needs of the whole process of mineral processing pump. It is widely used in mining washing, non-ferrous metal wet smelting, iron and steel smelting, alkali chemical industry, phosphorus chemical industry and other industries.



### Product characteristics

- ★Flow rate: 17-950m<sup>3</sup>/h
- ★Head: 7-128m
- ★Power: 4-560kw
- ★Size: 50/80/100/150/300/200/250 (mm)



## SZJH ceramic slurry pump

SZJH ceramic slurry pump is a new generation of corrosion-resistant and wear-resistant slurry pump independently developed by our company using modern composite ceramic technology and non-metallic casting technology. The pump is a horizontal single-stage single-suction centrifugal slurry pump, axial suction, radial discharge, bracket support, bearing grease lubrication or thin oil lubrication two ways.

The shaft seal has three sealing forms: auxiliary impeller seal, packing seal and mechanical seal.

It is widely used in mining washing, non-ferrous metal wet smelting, iron and steel smelting, alkali chemical industry, phosphorus chemical industry and other industries.



- ★Flow rate: 3.6-3528m<sup>3</sup>/h
- ★Head: 5-69m
- ★Power: 2.2-710kw
- ★Size: 25/32/50/80/100/150/250/300/350 (mm)



