

WANCHI®

**DEDICATED TO BECOMING A
LEADER IN THE CONSTRUCTION
INDUSTRY.**

MAIL
info@cn-wanchi.com

PHONE / WECHAT
+8615028903273

WHATSAPP
+8615612929416

WEBSITE
www.cn-wanchi.com

ADDRESS
No. 255, Jiajiazhuang Village,
Xingjiawan Town,
Renze District, Xingtai City, Hebei Province



WANCHI®

**HEBEI WANCHI MACHINERY
MANUFACTURING CO., LTD.**

**DEVELOPMENT THROUGH
TECHNOLOGICAL RESEARCH**





01

COMPANY PROFILE

P1

03

APPLICATIONS

P4

02

PRODUCTION

P3

04

COOPERATION

P5-P6

CONTENTS

05

PRODUCTS

P7



COMPANY PROFILE

20

YEARS

DEVELOPMENT HISTORY

165

PARTNERS

120

SERVING CITIES AND REGIONS

(2005-2024)

DEVELOPMENT THROUGH TECHNOLOGICAL RESEARCH

Hebei Wanchi Machinery Manufacturing Co., Ltd. founded in 2005, located in Xingtai City, Renze District, Xingjiawan Town, Hebei Province, China. The company focuses on specialized equipment manufacturing and is committed to providing high-quality construction machinery, food machinery, woodworking machinery, machine tools, environmental protection equipment, mining machinery, and material handling equipment. With years of industry experience, Hebei Wanchi has developed into a comprehensive enterprise integrating design, production, sales, and service.

Since its establishment, Hebei Wanchi Machinery Manufacturing Co., Ltd. with rich industry experience and strong technical strength, we have gradually developed into a leader in the mechanical manufacturing field. The company continues to innovate and improve to adapt to market changes, gradually forming a complete product chain and service system.



CORPORATE SPIRIT

Integrity, authenticity, cooperation, win-win



CORPORATE VISION

Dedicated to becoming a leader in the construction industry.



TALENT VIEW

Discover talent, make full use of talent, train talent, and build a learning team

COMPANY PROFILE

● PRODUCTION EQUIPMENT AND WORKSHOPS

The company covers a vast area and is equipped with modern production facilities and standardized workshops. This includes production lines for steel pipe rust removal and painting integrated machines, concrete pumps, and construction lift vehicles. The company is equipped with advanced production equipment and processes to ensure product quality and production efficiency. The workshops are fully functional, including welding, painting, assembly, and testing workshops, achieving comprehensive control and transparent management of the production process.

● PROFESSIONAL TEAM

Hebei Wanchi boasts a high-quality team, including design engineers, technical R&D personnel, quality inspectors, and international trade experts. Our team is dedicated to product innovation and technological advancement, having obtained numerous invention patents and been recognized as a high-tech enterprise. The professional skills and collaborative spirit of the team are the solid foundation for the company's continuous development.

● PRODUCT RANGE

Hebei Wanchi's main products include steel pipe rust removal and painting integrated machines, concrete pumps, and construction lift vehicles. These products are widely used in construction, engineering maintenance, and infrastructure development. The company has earned customer trust and praise with high-quality and efficient products and services.

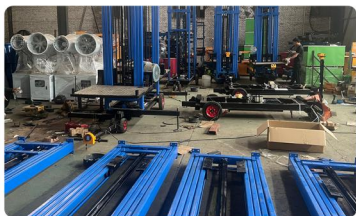
● MARKET COVERAGE

The company's products have a broad domestic market coverage, selling well in multiple provinces, municipalities, and autonomous regions, and actively expanding into international markets. Hebei Wanchi's products are also exported to Asia, Southeast Asia, Africa, North America, and other regions, establishing extensive international partnerships.

● VISION

Hebei Wanchi Machinery Manufacturing Co., Ltd. We are committed to becoming a leading global enterprise in the machinery manufacturing field. We will continue to uphold the principle of 'Quality First, Innovation as Core,' driving technological innovation and product upgrades to provide excellent solutions for our customers. We are dedicated to sustainable development and social responsibility, contributing to a better future.

PRODUCTION



APPLICATIONS



CONSTRUCTION

CONCRETE DELIVERY PUMP

High delivery efficiency, reduces labor costs.

CONSTRUCTION ELEVATOR

Safe and stable, improves construction efficiency.

PIPE RUST REMOVAL AND PAINTING MACHINE

Used for surface treatment of equipment and pipes to prevent corrosion.



METALLURGY AND MINING

PIPE RUST REMOVAL AND PAINTING MACHINE

Efficient rust removal and corrosion prevention, extends equipment lifespan.

CONSTRUCTION ELEVATOR

Strong stability, adapts to harsh environments, enhances work safety.



URBAN INFRASTRUCTURE MAINTENANCE

PIPE RUST REMOVAL AND PAINTING MACHINE

Effective corrosion prevention, extends facility lifespan.

CONSTRUCTION ELEVATOR

Flexible and safe, convenient for maintenance operations.



INDUSTRIAL MANUFACTURING

PIPE RUST REMOVAL AND PAINTING MACHINE

Improves product surface quality, enhances protection

CONSTRUCTION ELEVATOR

Flexible and efficient, adapts to various industrial environments, ensures high-altitude work safety.

COOPERATION

OUR SERVICE COMMITMENT

QUALITY ASSURANCE

Through comprehensive testing and quality control, we ensure that each product meets high standards. Our stringent quality management system guarantees the quality and stability of our products.

FLEXIBLE SUPPLY

We provide flexible supply strategies to meet different customer needs, ensuring timely delivery. We have the ability to quickly respond to market changes and offer timely supply services to our clients.

INNOVATIVE R&D

We continuously engage in technological innovation and R&D to provide clients with more advanced and efficient machinery and equipment. We invest in R&D to ensure our company remains at the forefront of technology.

AFTER-SALES SERVICE



MULTILINGUAL ONLINE TECHNICAL SUPPORT



CUSTOMIZED ONLINE TRAINING SERVICES



INTERNATIONAL LOGISTICS AND SPARE PARTS SERVICES



REGULAR CUSTOMER SATISFACTION SURVEYS

COOPERATION



REQUIREMENT CONFIRMATION



PROVIDING CUSTOMIZED SOLUTIONS



TECHNICAL COMMUNICATION AND CONFIRMATION



PRODUCTION MANUFACTURING



CONTRACT SIGNING



QUALITY INSPECTION AND ACCEPTANCE



PACKAGING AND SHIPPING



TECHNICAL COMMUNICATION AND CONFIRMATION

COOPERATION PROCESS

PRODUCTS CONTENTS



CONSTRUCTION COMPANY LIFT TRUCK

01 CROSS MOBILE LIFT



P9

02 ARTICULATED BOOM TRUCK



P11

03 MASONRY HYDRAULIC LIFTING PLATFORM (TIRE-TYPE WALKING)



P15

04 MASONRY HYDRAULIC LIFTING PLATFORM (CRAWLER TYPE)



P17

05 SINGLE COLUMN ALUMINUM ALLOY LIFT ELECTRIC AERIAL ENGINEERING WORK LADDER



P19

06 DOUBLE COLUMN ALUMINUM ALLOY LIFT ELECTRIC AERIAL ENGINEERING WORK LADDER



P20

07 SELF-PROPELLED AERIAL PICK-UP MACHINE



P21



INTELLIGENT THREADING MACHINE

01 FULLY AUTOMATIC CNC THREADING MACHINE



P22



CONSTRUCTION COMPANY LIFT TRUCK

01 CROSS MOBILE LIFT



P23



CONCRETE PUMP

01 FINE STONE SECONDARY STRUCTURAL COLUMN PUMP



P24

02 TYPE 20 FINE STONE CONCRETE PUMP



P25

03 TYPE 25 LARGE PARTICLE DELIVERY PUMP



P27

04 TYPE 30 FINE STONE CONCRETE PUMP



P29

05 TYPE 40 FINE STONE CONCRETE PUMP



P31

06 50 TYPE LARGE AGGREGATE CONCRETE PUMP



P33

07 TYPE 60 CONCRETE PUMP



P34

08 DIESEL ENGINE CONCRETE PUMP



P35

09 DIESEL ENGINE CONCRETE PUMP



P37

10 MICRO LARGE PARTICLE CONVEYING PUMP



P39

CROSS MOBILE LIFT



PRODUCT SPECIFICATIONS

Fully self-propelled 6-meter electric drive (steel track) configuration list, fully self-propelled 8-meter electric drive (steel track), fully self-propelled 10-meter electric drive (steel track) configuration list, fully self-propelled 12-meter electric drive (steel track) configuration list, fully self-propelled 14-meter electric drive (steel track) configuration list, fully self-propelled 14-meter electric drive + one-button leveling + (steel track) configuration list, fully self-propelled 14-meter configuration list, fully self-propelled small 4-meter configuration list, fully self-propelled small 6-meter configuration list, fully self-propelled narrow 0810 configuration list

If you don't understand, please call us.: 1528903273



MATERIAL

| | |
|---------------------------|---|
| Safety guardrail | 35mm*35mm square tube |
| mesa | Anti-slip pattern plate |
| Support rod | Material: Q345 |
| Base | Q235 steel plate welding |
| Lifting cylinder | 1 piece |
| Outrigger Cylinder | 4 sticks |
| Power battery | Tianneng |
| Hydraulic oil | 32/46 |
| Electronic control system | HBL |
| Motor Controller | Trinity |
| Track chassis | Steel tracks |
| Motor pump | Guo Rui |
| Valve Group | Fubo Norma |
| Surface treatment | Shot blasting, rust removal, plastic spraying |

CROSS MOBILE LIFT

PRODUCT CONFIGURATION

| | | | |
|-----------------------|--------------------|---------------------------------|----------------------------|
| Proportional control | Braking system | Oil pipe explosion-proof system | Extended platform |
| Troubleshooting | Emergency descent | Safety maintenance support | Charging protection system |
| Emergency stop switch | One-click leveling | Tilt protection system | Folding guardrail |
| buzzer | trumpet | ECU (three in one) | PCU (nine-button button) |

BASIC PARAMETERS OF THE PRODUCT

| BASIC PARAMETERS | UNIT | MPZXLD-0608 |
|--|------|-------------|
| Safe working load | Kg | 320 |
| Extended platform safe working load | Kg | 113 |
| Maximum working height | m | 8.8 |
| Maximum platform height | m | 6 |
| Machine length | mm | 2780 |
| Machine width | mm | 1570 |
| Overall height (guardrails not folded) | mm | 2350 |
| Overall height (guardrail folded) | mm | 1780 |
| Working platform size | mm | 2270X1130 |
| Platform extension size | mm | 900 |
| Minimum ground clearance (folded state) | mm | 0 |
| Minimum ground clearance (lifting state) | mm | 0 |
| Minimum turning radius | mm | 0 |
| Lifting motor | V/Kw | 48V/4.5KW |
| Travel motor | V/Kw | 48V/4KW |
| Equipment travel speed (folded state) | Km/h | 1.8 |
| Equipment travel speed (lifting state) | Km/h | 0 |
| Ascent/descent speed | sec | 80/35 |
| Battery | V/Ah | 8x12v/240Ah |
| charger | V/A | 48/30 |
| Maximum climbing ability | % | 25 |
| Maximum allowable working angle | ° | 1.5-3 |
| Machine weight | Kg | 2770 |

ARTICULATED BOOM TRUCK



1, [MAIN PERFORMANCE ADVANTAGES]

- Large-scale cross-obstacle operation
- 360-degree rotation operation
- Adopt 48v combined battery pack to provide longer endurance
- Full-proportional distributed control, more flexible operation, adaptable to a variety of complex operating environments
- Battery/diesel engine dual power options to meet insufficient use environments
- Industry-leading turning drive technology, smaller turning radius, flexible maneuverability
- Advanced two-wheel/four-wheel drive technology, strong power, high climbing ability

2. MAIN STRUCTURAL ANALYSIS

CHASSIS PART

- ① Two-wheel drive ② Two-wheel steering ③ Solid rubber tires
- ④ DC drive motor, equipped with fast and slow speed adjustment to meet the driving speed requirements under different working conditions
- ⑤ With automatic parking function, parking and parking to ensure operation safety

BOOM PART

- ① Five-arm combination: 3-section folding arm + telescopic arm + small flying arm
- ② High-strength boom material, high strength and strong safety
- ③ Each arm can be controlled independently, simple and convenient to operate

ROTATING PART

- ① 360-degree rotation to meet multi-directional operation requirements
- ② High-efficiency and precise slewing support mechanism, more sensitive and stable rotation

WORKBENCH

- ① Customizable super-large workbench to meet the needs of multiple people
- ② Standard load 230kg, maximum load capacity can reach 500kg
- ③ The workbench is equipped with automatic leveling function

HYDRAULIC SYSTEM

- ① Advanced hydraulic wiring and pipeline technology, low failure rate, easy maintenance
- ② Equipped with manual emergency power unit to ensure emergency use under power shortage conditions
- ③ Multi-way hydraulic valve design, clear division of labor, no mutual influence, rapid response
- ④ Adopt brand anti-wear hydraulic oil to ensure stable operation

ELECTRICAL SYSTEM

- ① The electrical system is equipped with an operating sound and light alarm device to ensure the safety of the operating range.
- ② PLC microcomputer control technology, smarter and more accurate
- ③ Equipped with equipment status display, convenient for viewing the current operating status of the equipment
- ④ The equipment has a fault self-detection function, and the cause of the fault can be viewed through the display

ARTICULATED BOOM TRUCK

3. MAIN TECHNICAL PARAMETERS

| SERIAL NUMBER | DIMENSIONS | |
|---------------|--|------------------------------------|
| 1 | Machine length (folded) | 5.2m |
| 2 | Machine width (folded) | 1.65m |
| 3 | Overall height (folded) | 2.35m |
| 4 | Workbench size | 1.6*0.8m |
| 5 | Number of working arms | 5 sections |
| 6 | Folding Travel Speed | 4km/h |
| 7 | Lifting speed | 0.8km/h |
| 8 | Upper arm swing | ≤0.5% |
| 9 | Forearm Luffing Angle | 130° |
| 10 | Minimum turning radius | Outer wheel 4.4m Inner wheel 2.25m |
| 11 | Height of workbench from ground after retraction | 620mm |
| 12 | Wheelbase | 1907mm |
| 13 | Wheelbase | 1440mm |
| 14 | Equipment weight | 4900kg |
| 15 | Control voltage | 24v |
| 16 | Tire specifications | 28X9-15 solid tire |
| 17 | Tire size | 580mm |
| 18 | Device Color | yellow |

ARTICULATED BOOM TRUCK

MAIN PERFORMANCE PARAMETERS

| | | |
|----|-------------------------------------|---|
| 19 | Maximum operating height | 10m |
| 20 | Maximum platform height | 8m |
| 21 | Maximum operating radius | 5.3m |
| 22 | Maximum span height | 5.1m |
| 23 | Maximum allowable angle of chassis | 1.5°/3° |
| 24 | Drive type | 4x2x2 |
| 25 | Maximum climbing grade | 25% |
| 26 | Workbench load | 230kg |
| 27 | Maximum load capacity | 2 people |
| 28 | Workbench rotation angle (optional) | ±80° (after installation, the length of the whole machine increases by 200) |
| 29 | Wind resistance level | Level 3-4 |

DRIVE PARAMETERS - DIESEL

| | | |
|----|-----------------------------|---|
| 30 | Turntable rotation angle | 360° continuous |
| 31 | Power form | Cloud Engine |
| 32 | Maximum output power | 37kw |
| 33 | Starting battery | 12v/60A |
| 34 | Number of batteries | 2 pieces |
| 35 | Number of engine cylinders | 4 cylinders |
| 36 | Engine Type | Non-road environmentally friendly engines |
| 37 | Emission standards | Country 2 |
| 38 | Fuel Type | 0# Diesel |
| 39 | Hydraulic oil type | 46# anti-wear hydraulic oil |
| 40 | Engine oil tank capacity | 40L |
| 41 | Hydraulic oil tank capacity | 120L |

(Due to product upgrades and technology updates, the above parameters have changed, please refer to actual production)

ARTICULATED BOOM TRUCK

4. REFERENCE PICTURES



The self-propelled articulated boom lift work platform can perform overhang operations, cross certain obstacles, or lift in one place for multi-point operations; it can rotate 360 degrees, has a large platform load capacity, and can accommodate two or more people working at the same time and can carry certain equipment; the equipment has good mobility and is easy to transfer to another location; it has a beautiful appearance and is suitable for large-scale operations such as stations, docks, shopping malls, stadiums, residential properties, factories and mines.

If you have any questions, please call: 1528903273

5. PRODUCT SPECIFICATIONS

Technical parameters of the self-propelled articulated boom 8m diesel lifting work platform, technical parameters of the self-propelled articulated boom 10m diesel lifting work platform, technical parameters of the self-propelled articulated boom 12m diesel lifting work platform,

Technical parameters of the self-propelled articulated boom 14m diesel lifting work platform, technical parameters of the self-propelled articulated boom 8m diesel lifting work platform, technical parameters of the self-propelled articulated boom 16m diesel lifting work platform,

Technical parameters of the self-propelled articulated boom 18m diesel lifting work platform, technical parameters of the self-propelled articulated boom 20m diesel lifting work platform



MASONRY HYDRAULIC LIFTING PLATFORM (TIRE-TYPE WALKING)



Product name: Hydraulic masonry lifting platform Masonry plastering lifting platform Hydraulic lifting platform Mobile masonry lifting platform....

Product use scenarios: construction site Airport Factory Factory area Decoration industry Rental industry Warehouse....

Product accessories: Tire (located at the bottom of the machine walking wheel) Bar part (located on both sides of the keyhole at the front of the machine) Chain (located on the inside of the machine door frame) Cylinder (retractable hydraulic rod located in the center of the door frame)

Remote control (the machine is equipped with two, wireless remote control, wired remote control located on the bottom side of the machine)

If you don't understand, please call us.: 1528903273



MASONRY HYDRAULIC LIFTING PLATFORM (TIRE-TYPE WALKING)

| | 4M PLATFORM | 6M PLATFORM | 8M PLATFORM | 8M PLATFORM |
|------------------------------|---|-------------|-------------------------|-------------|
| Platform size | 4*1.35*1.85 | 4*1.35*2.9 | 4*1.35*2.9 | 4*1.75*3.4 |
| Platform load | 1 ton | 1 ton | 1 ton | 1 ton |
| Machine weight | 1.15 tons | 1.35 tons | 1.5 tons | 1.6 tons |
| Lifting motor brand | Huasheng | Huasheng | Huasheng | Huasheng |
| Lifting motor voltage | 220v | 220v | 220v | 220v |
| Lifting motor power | 2.2KW | 2.2KW | 2.2KW | 2.2KW |
| Travel motor brand | Yuhui | | | |
| Travel motor power | 1200w/48v | 1200w/48v | 1200w/48v | 1200w/48v |
| Hydraulic cylinder brand | Ludwig | | | |
| Battery Brand | Super Power | Super Power | Super Power | Super Power |
| Battery Specifications | 48v20ah | 48v20ah | 48v20ah | 48v20ah |
| Chassis steel grade | Q235/12 channel steel/10*10 square tube | | | |
| Lifting gantry steel grade | Q355/10C type 5.0 thick | | Q355/10C type 8.0 thick | |
| Overall transport dimensions | 2.5*1.1*1.86 | 2.5*1.1*2.9 | 2.5*1.2*2.9 | 2.5*1.3*3.4 |



MASONRY HYDRAULIC LIFTING PLATFORM (CRAWLER TYPE)



Product name: Hydraulic masonry lifting platform Masonry plastering lifting platform Hydraulic lifting platform Mobile masonry lifting platform....
Product use scenarios: construction site Airport Factory Factory area Decoration industry Rental industry Warehouse....
Product accessories: Tire (located at the bottom of the machine walking wheel) Bar part (located on both sides of the keyhole at the front of the machine) Chain (located on the inside of the machine door frame) Cylinder (retractable hydraulic rod located in the center of the door frame)
Remote control (the machine is equipped with two, wireless remote control, wired remote control located on the bottom side of the machine)

If you don't understand, please call us.: 1528903273



MASONRY HYDRAULIC LIFTING PLATFORM (CRAWLER TYPE)

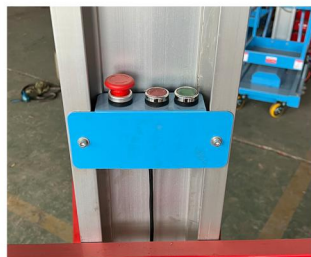
| | 4M PLATFORM | 6M PLATFORM | 8M PLATFORM | 8M PLATFORM |
|------------------------------|---|-------------|-------------------------|-------------|
| Platform size | 4*1.35*1.85 | 4*1.35*2.9 | 4*1.35*2.9 | 4*1.75*3.4 |
| Platform load | 1 ton | 1 ton | 1 ton | 1 ton |
| Machine weight | 1.3 tons | 1.55 tons | 1.75 tons | 2 tons |
| Lifting motor brand | Huasheng | Huasheng | Huasheng | Huasheng |
| Lifting motor voltage | 220v | 220v | 220v | 220v |
| Lifting motor power | 2.2KW | 2.2KW | 2.2KW | 2.2KW |
| Travel motor brand | Yuhui | | | |
| Travel motor power | 1500w/48v*2 | 1500w/48v*2 | 1500w/48v*2 | 1500w/48v*2 |
| Hydraulic cylinder brand | Ludwig | | | |
| Battery Brand | Super Power | Super Power | Super Power | Super Power |
| Battery Specifications | 48v32ah*2 | 48v32ah*2 | 48v32ah*2 | 48v32ah*2 |
| Chassis steel grade | Q235/12 channel steel/10*10 square tube | | | |
| Lifting gantry steel grade | Q355/10C type 5.0 thick | | Q355/10C type 8.0 thick | |
| Overall transport dimensions | 2.5*1.1*1.86 | 2.5*1.1*2.9 | 2.5*1.2*2.9 | 2.5*1.3*3.4 |



SINGLE COLUMN ALUMINUM ALLOY LIFT ELECTRIC AERIAL ENGINEERING WORK LADDER



| MODEL SPECIFICATIONS | LOAD 150KG 4M SINGLE COLUMN | LOAD 150KG 6M SINGLE COLUMN | LOAD 130KG 8M SINGLE COLUMN | LOAD 130KG 10M SINGLE COLUMN |
|----------------------|-----------------------------|-----------------------------|-----------------------------|------------------------------|
| Table size | 650*650MM | 650*650MM | 650*650MM | 650*650MM |
| Rated load | 150KG | 150KG | 130KG | 130KG |
| Maximum height | 4.0M | 6.0M | 8.0M | 10M |
| Dimensions | 1420*780*1970MM | 1420*780*1970MM | 1420*780*1970MM | 1420*780*1970MM |
| Vehicle weight | 340KG | 360KG | 380KG | 420KG |



DOUBLE COLUMN ALUMINUM ALLOY LIFT ELECTRIC AERIAL ENGINEERING WORK LADDER



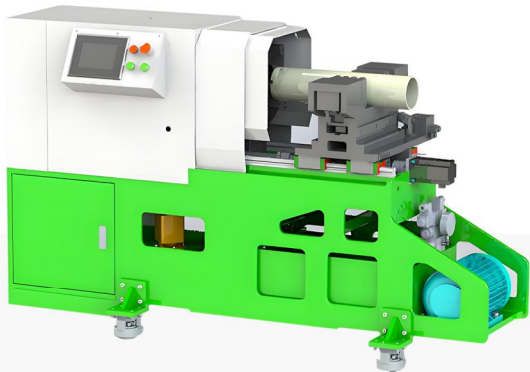
| MODEL SPECIFICATIONS | 300KG LOAD, 6M DOUBLE COLUMN | 300KG LOAD 8M DOUBLE COLUMN | 250KG LOAD 10M DOUBLE COLUMN |
|----------------------|------------------------------|-----------------------------|------------------------------|
| Table size | 1200*630MM | 1200*630MM | 1200*630MM |
| Rated load | 300KG | 300KG | 250KG |
| Maximum height | 6.0M | 8.0M | 10.0M |
| Dimensions | 1553*850*2000MM | 1553*850*2000MM | 1848*850*2000MM |
| Vehicle weight | 510KG | 550KG | 690KG |

SELF-PROPELLED AERIAL PICK-UP MACHINE



| Model Specifications | FSEP3-2.7 | FSEP3-3.3 | FSEP3-4.0 |
|--|-----------|-----------|-----------|
| Maximum platform height (H) mm | 2700 | 3300 | 4000 |
| Maximum machine height (H1) mm | 4020 | 4900 | 5310 |
| Distance from base to ground (H2) mm | 40 | 40 | 40 |
| Platform rated load kg | 300 | 300 | 300 |
| Working platform size mm | 600x700 | 600x700 | 600x700 |
| Maximum driving speed (platform lowered) | 4 | 4 | 4 |
| Maximum driving speed (platform angry) | 1.6 | 1.6 | 1.6 |
| Minimum turning radius mm | 1600 | 15-20 | 15-20 |
| Maximum climbing ability % | 15-20 | 3300 | 4000 |
| Driving wheel size mm | 230x80 | 4900 | 5310 |
| Universal wheel size mm | 150X40 | 40 | 40 |
| Drive motor v/kw | 2x24/0.4 | 300 | 300 |
| Lifting motor v/kw | 2x12/1.6 | 600x700 | 600x700 |
| Maintenance-free battery v/Ah | 2X12/100 | 4 | 4 |
| Charger v/A | 24/15 | 1.6 | 1.6 |
| Machine length (A) mm | 1530 | 1600 | 1600 |
| Machine width (B) mm | 760 | 760 | 760 |
| Overall height (C) mm | 1830 | 2130 | 1840 |
| Machine weight kg | 430 | 450 | 660 |

FULLY AUTOMATIC CNC THREADING MACHINE



| Basic parameters of the product: | |
|------------------------------------|-----------------------------------|
| Basic parameters | |
| Power supply mode | Three-phase AC 380V 50HZ |
| Rated power | 8.6KW |
| Spindle speed High | medium and low gear 126/87/48 rpm |
| Equipment weight | 870KG |
| Maximum working hydraulic pressure | 12MPA |
| Equipment model | 4-inch-4-inch |
| Equipment dimensions | 1.8x0.6x1. 1M |



STEEL PIPE RUST REMOVAL AND PAINTING MACHINE



PRODUCT ADVANTAGES

- 1

This machine adopts mechanical transmission,flat pressing and rotating two-way straightening Reasonable structure,stable performance,easy operation
- 2

Multifunctional integration (straightening, descaling, rust removal, painting) random combination to meet diversified needs, saving time and efficiency.
- 3

Product functions: dust removal, straightening, rust removal, painting

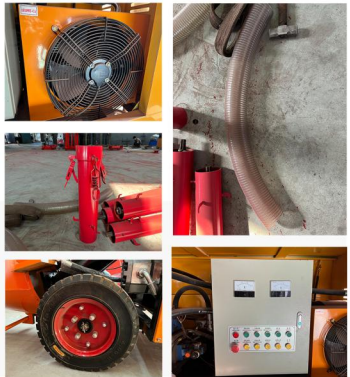
| | | | |
|----------------------|---|------------------------|---------------------------------------|
| In the past | 10th Anniversary of the International Monetary Fund | Scope of application | Steel pipe with diameter 45-51cm |
| Walking speed | 18m/min | Straightening the bend | 60° |
| Straightening effect | ≤3° | Motor power | 5.5kw+4kw+4kw |
| Voltage | 380v | weight | 1500kg |
| Dimensions | 3300*960*1200mm | Product Features | Straightening, painting, rust removal |

| | | | |
|----------------------|---|------------------------|---------------------------------------|
| In the past | 10th Anniversary of the International Monetary Fund | Scope of application | Steel pipe with diameter 45-51cm |
| Walking speed | 18m/min | Straightening the bend | 90° |
| Straightening effect | ≤3° | Motor power | 5.5kw+3kw+3kw |
| Voltage | 380v | weight | 1200kg |
| Dimensions | 3000*960*1200mm | Product Features | Straightening, painting, rust removal |

FINE STONE SECONDARY STRUCTURAL COLUMN PUMP



PRODUCT RELATED ACCESSORIES:



| MODEL | UNIT | SPECIFICATION |
|-------------------------------|------|--------------------------------|
| Motor power | Kw | 15 |
| power supply | V | 380 |
| Dimensions | mm | 1750*700*1200 |
| weight | Kg | 600 |
| Vertical Height | m | 20-30 |
| Horizontal conveying distance | m | 40-50 |
| Transport capacity | h | 5 ³ -6 ³ |
| Maximum particle diameter | cm | ≤1.5 |
| Discharge port diameter | mm | 80 |
| Cylinder stroke | mm | 350 |
| Cylinder diameter | mm | 120 |
| Delivery pipe diameter | mm | 80 |

This product is used in high-rise building mortar and fine stone concrete transportation, secondary structural column grouting, various pressure grouting in reservoirs, hydropower stations, ports, docks, foundation treatment, soft foundation, reinforcement grouting, tunnel, subway, mine construction backfill grouting anchor support. This product adopts hydraulic slurry delivery, vibration net filtration and double cylinder reciprocating operation, which can fully transport various mortars, fine stone concrete, etc. in construction applications. This product has the characteristics of large displacement, high pressure, labor and material saving, flexible movement, etc. It is an ideal mortar transportation equipment.

TYPE 20 FINE STONE CONCRETE PUMP

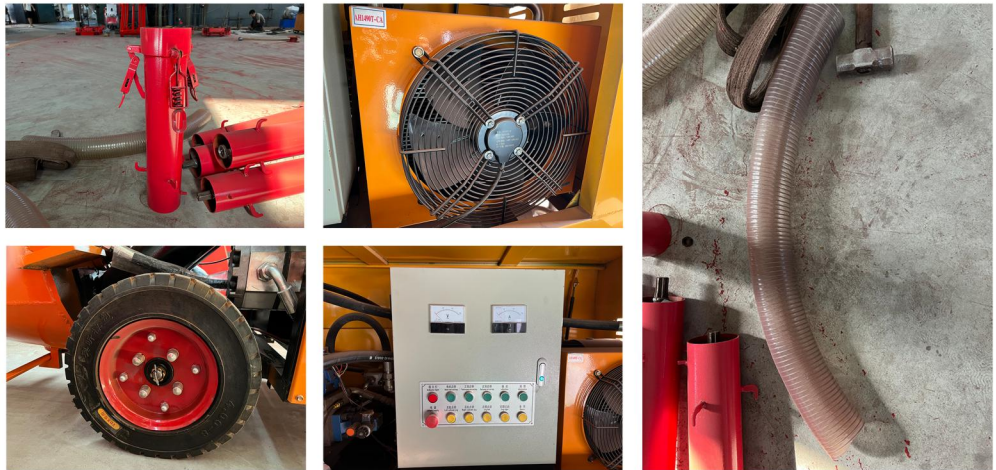


| MODEL | UNIT | SPECIFICATION |
|-------------------------------|------|--------------------------------|
| Motor power | Kw | 30 |
| power supply | V | 380 |
| Dimensions | mm | 4000*1500*1500 |
| weight | Kg | 1500 |
| Vertical Height | m | 100 |
| Horizontal conveying distance | m | 180 |
| Transport capacity | h | 5 ³ -7 ³ |
| Maximum particle diameter | cm | ≤1.5 |
| Discharge port diameter | mm | 125-64 |
| Cylinder stroke | mm | 1000 |
| Cylinder diameter | mm | 140 |
| Delivery pipe diameter | mm | 64 |

TYPE 20 FINE STONE CONCRETE PUMP

1. The advanced S-tube valve reversing is adopted to meet the transportation of fine stone concrete;
2. The eyeglass plate and cutting ring are made of high-hardness wear-resistant alloy materials with longer service life;
3. The imported main oil pump has high outlet pressure and can meet the transportation requirements of high-rise buildings and long-distance construction;
4. The hydraulic oil cooling adopts an air cooling system with good cooling effect and easy use;
5. It has a reverse pump function to minimize pipeline blockage when the concrete collapse is not good;
6. It is equipped with a centralized lubrication system, and the lubricating oil is distributed to various parts to ensure the service life of the rotating parts;
7. The electrical box adopts Mitsubishi electrical components and is equipped with a wireless remote control handle, which is stable and easy to operate.

THE FOLLOWING ARE PRODUCT-RELATED ACCESSORIES:



TYPE 25 LARGE PARTICLE DELIVERY PUMP



| MODEL | UNIT | SPECIFICATION |
|-------------------------------|------|-----------------|
| Motor power | Kw | 30 |
| power supply | V | 380 |
| Dimensions | mm | 3500*1600*1600 |
| weight | Kg | 1200 |
| Vertical Height | m | 70 |
| Horizontal conveying distance | m | 150 |
| Transport capacity | h | 15 ³ |
| Maximum particle diameter | cm | ≤3 |
| Discharge port diameter | mm | 125 |
| Cylinder stroke | mm | 750 |
| Cylinder diameter | mm | 140 |
| Delivery pipe diameter | mm | 80-125 |

TYPE 25 LARGE PARTICLE DELIVERY PUMP

1. Mixing, pumping and transportation are three-in-one, and the transfer is convenient and fast.
2. High construction efficiency; on-site mixing and continuous pumping, compared with traditional mixer mixing and manual feeding, the efficiency is more than 5 times higher.
3. Save labor and reduce use costs. The mixing and pumping process is operated by one person, with a high degree of automation. Compared with mixer mixing, manual feeding can save 4-5 manpower, and the labor intensity is greatly reduced.
4. Small footprint, easy to move, very suitable for rural and narrow area construction.
5. The quality of the produced concrete is good. After two mixing and pipeline transportation, the concrete is more uniform, has good density, high strength, and better anti-seepage and anti-bending properties.

THE FOLLOWING ARE PRODUCT-RELATED ACCESSORIES:



TYPE 30 FINE STONE CONCRETE PUMP



| MODEL | UNIT | SPECIFICATION |
|-------------------------------|------|----------------|
| Motor power | Kw | 37 |
| power supply | V | 380 |
| Dimensions | mm | 3800*1600*1600 |
| weight | Kg | 1600 |
| Vertical Height | m | 80 |
| Horizontal conveying distance | m | 200 |
| Transport capacity | h | 18-22 |
| Maximum particle diameter | cm | ≤2 |
| Discharge port diameter | mm | 140 |
| Cylinder stroke | mm | 1000 |
| Cylinder diameter | mm | 140 |
| Delivery pipe diameter | mm | 80-100 |

TYPE 30 FINE STONE CONCRETE PUMP

1. HYDRAULIC SYSTEM:

The application of the new electronic control reversing technology makes the pumping work more reliable and the failure rate of the hydraulic system is lower; the special valve of the hydraulic control system is configured, the large flow rate is low energy consumption and the impact is small, which prolongs the service life.

2. POWER SYSTEM:

The motor fine stone pump adopts Siemens motor, a well-known domestic and foreign brand, and the diesel engine fine stone pump adopts Tianjin Lovol and Yuchai brands with low energy consumption and high efficiency.

3. MAIN OIL PUMP:

The imported Kawasaki main oil pump is adopted. The main oil pump adopts electronic control displacement and the pumping speed is adjustable. It has a long life, strong and powerful work, and can work continuously for 24 hours. It adopts a joint venture brand constant power variable piston pump. The constant power control effectively prevents the motor and diesel engine from overloading, and can withstand higher pressure and load than conventional gear pumps.

4. COOLING SYSTEM:

The air-cooled or water-cooled dual cooling system can ensure the stable operation of the equipment under harsh climatic conditions such as high temperature and severe cold.

5. ELECTRONIC CONTROL SYSTEM:

The main electrical appliances adopt the Japanese Mitsubishi PLC control system, equipped with a wireless remote control, stable operation and easy operation.

THE FOLLOWING ARE PRODUCT-RELATED ACCESSORIES:



TYPE 40 FINE STONE CONCRETE PUMP



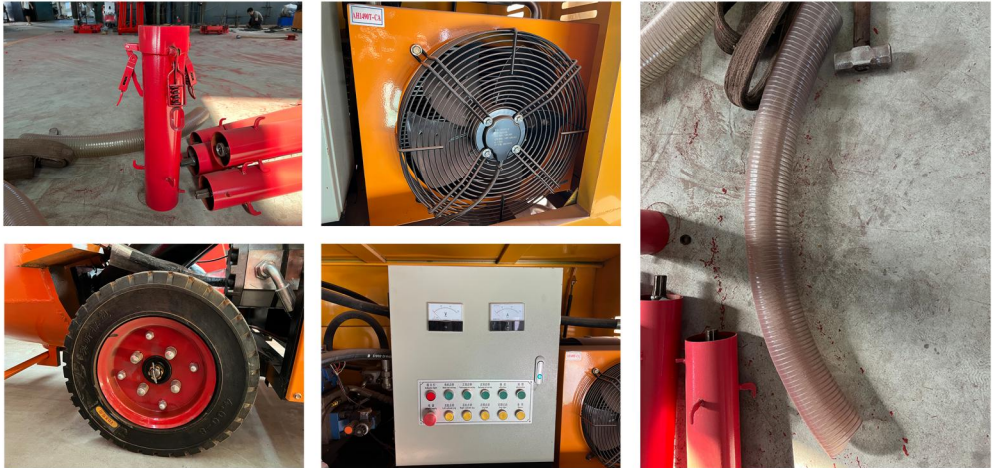
| MODEL | UNIT | SPECIFICATION |
|-------------------------------|------|----------------|
| Motor power | Kw | 45 |
| power supply | V | 380 |
| Dimensions | mm | 4200*1700*1700 |
| weight | Kg | 2500 |
| Vertical Height | m | 150-180 |
| Horizontal conveying distance | m | 300 |
| Transport capacity | h | 30³-35³ |
| Maximum particle diameter | cm | ≤2 |
| Discharge port diameter | mm | 150 |
| Cylinder stroke | mm | 1180 |
| Cylinder diameter | mm | 160-180 |
| Delivery pipe diameter | mm | 80-125 |

TYPE 40 FINE STONE CONCRETE PUMP

The 40-type fine stone concrete delivery pump is a fine stone concrete delivery equipment specially developed for the characteristics of floor heating construction. It is suitable for large-area, high-efficiency construction of fine stone concrete filling layer or mortar filling in floor heating projects. It can be used for the delivery of fine stone concrete pumps or mortar in construction projects, tunnels, mines and other projects. After adding spray accessories, it can also be used as a spraying pump for spraying and throwing concrete, mortar, refractory materials and greening soil.

WANCHI

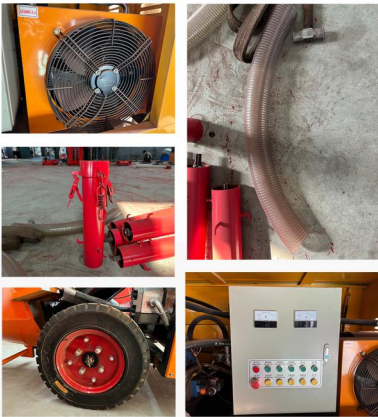
THE FOLLOWING ARE PRODUCT-RELATED ACCESSORIES:



50 TYPE LARGE AGGREGATE CONCRETE PUMP



PRODUCT RELATED ACCESSORIES:

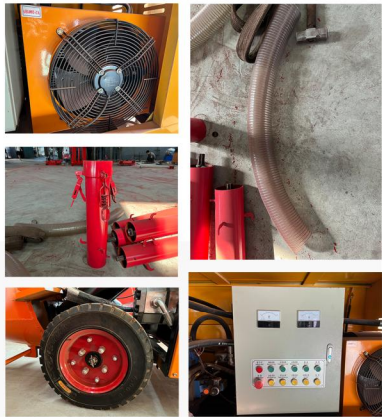


| MODEL | UNIT | SPECIFICATION |
|-------------------------------|------|----------------------------------|
| Motor power | Kw | 55 |
| power supply | V | 380 |
| Dimensions | mm | 4500*1800*1700 |
| weight | Kg | 3200 |
| Vertical Height | m | 180 |
| Horizontal conveying distance | m | 500 |
| Transport capacity | h | 30 ³ -40 ³ |
| Maximum particle diameter | cm | ≤4 |
| Discharge port diameter | mm | 180 |
| Cylinder stroke | mm | 1200 |
| Cylinder diameter | mm | 200 |
| Delivery pipe diameter | mm | 80-125 |

TYPE 60 CONCRETE PUMP



PRODUCT RELATED ACCESSORIES:



| MODEL | UNIT | SPECIFICATION |
|-------------------------------|------|---------------|
| Motor power | Kw | 90 |
| Maximum pressure | Mpa | 38 |
| weight | Kg | 4000 |
| Vertical Height | m | 220 |
| Horizontal conveying distance | m | 700 |
| Transport capacity | h | 40-60 |
| Maximum particle diameter | cm | 5 |
| Discharge port diameter | mm | 180 |
| Cylinder stroke | mm | 1600 |
| Cylinder diameter | mm | 200 |
| Delivery pipe diameter | mm | 100-125 |

DIESEL ENGINE CONCRETE PUMP



| MODEL | UNIT | SPECIFICATION |
|-------------------------------|------|----------------------------------|
| Motor power | Kw | 30-85 |
| power supply | V | Diesel Power |
| Dimensions | mm | 25 |
| weight | Kg | 2000-5000 |
| Vertical Height | m | 30-150 |
| Horizontal conveying distance | m | 70-300 |
| Transport capacity | h | 15 ³ -60 ³ |
| Maximum particle diameter | cm | ≤1-4 |
| Discharge port diameter | mm | 100-150 |
| Cylinder stroke | mm | 650-1500 |
| Cylinder diameter | mm | 140-200 |
| Delivery pipe diameter | mm | 100-150 |

DIESEL ENGINE CONCRETE PUMP

1. MAIN OIL PUMP:

constant power variable piston pump is adopted, constant power control effectively prevents diesel engine overload, and can withstand higher pressure and load than conventional gear pumps.

2. POWER SYSTEM:

diesel engine concrete pump has low energy consumption and high efficiency.

3. HOPPER DEVICE:

increase the hopper volume and equip the shed with a vibration motor to meet the requirements of pumping concrete.

4. ELECTRONIC CONTROL SYSTEM:

the main electrical appliances are Schneider, LS brand, and Chint.

5. COOLING SYSTEM:

air cooling or water cooling dual cooling system is adopted, which is not only suitable for high temperature weather, but also suitable for severe cold weather, controlling the oil temperature of the hydraulic system, and ensuring the safety and reliability of equipment operation.

6. CENTRALIZED LUBRICATION SYSTEM:

A plunger pump injects lubricant into the main line "point-to-point interlude protection", and the lubricant is distributed to the interlude slip points through the distributor. Protect key components from wear.

7. SPIPE VALVE:

It is made of high manganese steel as a whole casting, and the vulnerable surface is welded with anti-wear materials. It has the advantages of high pressure resistance and wear resistance: the inner cavity transition is smooth, the concrete flows smoothly inside, and the pumping performance is further improved; the spline shaft is made of alloy material for special surface treatment, which improves the wear resistance and fatigue strength.

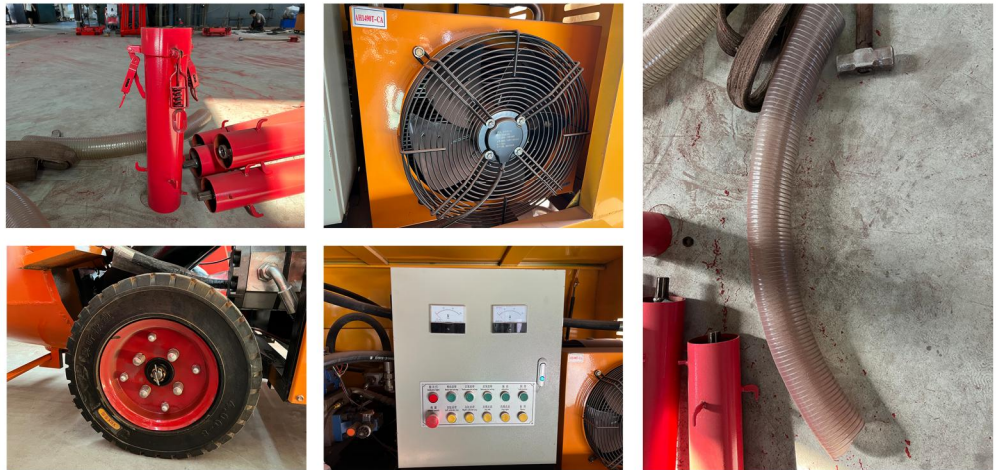
8. GLASSES PLATE, CUTTING RING GLASSES PLATE, CUTTING RING ARE MADE OF HARD TRIBUTE ALLOY INLAY AND DURABLE.

9. HYDRAULIC PIPE JOINT:

The hose is provided by Alfa Gama of Italy or Gates of the United States.

10. WIRELESS REMOTE CONTROL:

THE FOLLOWING ARE PRODUCT-RELATED ACCESSORIES:



DIESEL ENGINE CONCRETE PUMP

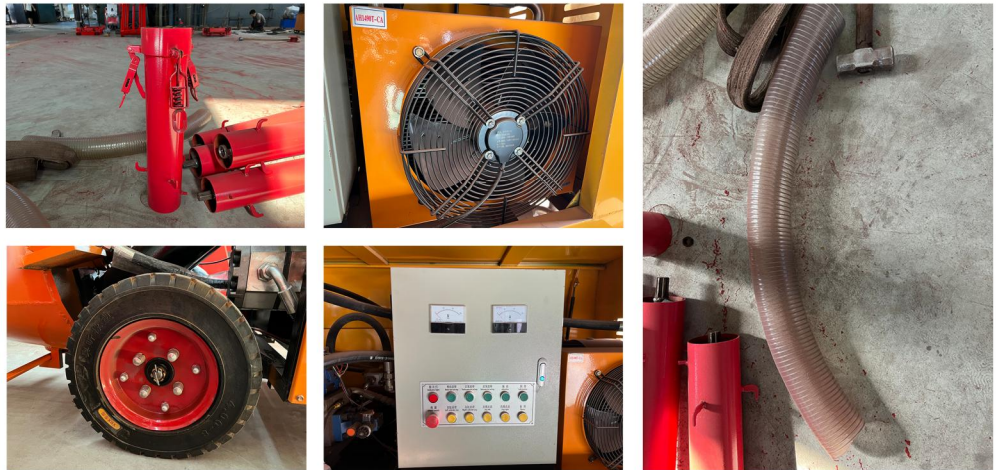


| MODEL | UNIT | SPECIFICATION |
|-------------------------------|------|--------------------------------|
| Motor power | Kw | 30 |
| power supply | V | 380 |
| Dimensions | mm | 4000*1600*1600 |
| weight | Kg | 1500 |
| Vertical Height | m | 100 |
| Horizontal conveying distance | m | 180 |
| Transport capacity | h | 5 ³ -7 ³ |
| Maximum particle diameter | cm | ≤1.5 |
| Discharge port diameter | mm | 125-64 |
| Cylinder stroke | mm | 1000 |
| Cylinder diameter | mm | 140 |
| Delivery pipe diameter | mm | 64 |

DIESEL ENGINE CONCRETE PUMP

1. HIGH WORKING EFFICIENCY
It adopts hydraulic pumping, with high system reliability and stable delivery volume.
2. THE INJECTION VOLUME IS CONTINUOUSLY ADJUSTABLE:
The main oil pump adopts a variable plunger pump, and the injection speed can be freely adjusted.
3. THE AMOUNT OF ACCELERATOR ADDED IS CONTINUOUSLY ADJUSTABLE:
It can be infinitely adjusted according to the amount of spraying.
4. LONG LIFE OF VULNERABLE PARTS:
The service life of the host vulnerable parts is not less than 4000M3 of injection.
5. EQUIPPED WITH AUTOMATIC LUBRICATION SYSTEM:
Automatic lubrication is adopted for the main sealing parts, and the grease filling amount and filling time are automatically controlled, which greatly extends the life of vulnerable parts.
6. HUMANIZED PRODUCT DESIGN:
It is more convenient to operate.

THE FOLLOWING ARE PRODUCT-RELATED ACCESSORIES:



MICRO LARGE PARTICLE CONVEYING PUMP



| MODEL | UNIT | SPECIFICATION |
|-------------------------------|------|--------------------------------|
| Motor power | Kw | 15 |
| power supply | V | 380 |
| Dimensions | mm | 2000*700*1200 |
| weight | Kg | 600 |
| Vertical Height | m | 30 |
| Horizontal conveying distance | m | 60-70 |
| Transport capacity | h | 5 ³ -8 ³ |
| Maximum particle diameter | cm | ≤3 |
| Discharge port diameter | mm | 125 |
| Cylinder stroke | mm | 550 |
| Cylinder diameter | mm | 120 |
| Delivery pipe diameter | mm | 100 |

MICRO LARGE PARTICLE CONVEYING PUMP

This machine adopts mature hydraulic propulsion technology, pump truck principle, and revolutionary italic lifting layout template components. It not only completely solves the shortcomings of the previous secondary structural column pump, such as bulky volume, fast wear, easy pipe blocking, and difficult maintenance, but also has powerful effects and excellent performance. Once launched on the market, it has won the favor of customers. The motor power of this machine is only 15 kilowatts, the head is up to 15 meters, the volume is only the size of a bucket truck, and the weight is only more than 600 kilograms. It is not only flexible and convenient to move, but also has no dead angle coverage of beams and columns within a radius of 30 to 40 meters every time it moves. It is fully hose-transported and has a flow rate of up to 8 cubic meters per hour. This machine has a back-suction function, which can suck back the liquid when moving the pipe, and it is easier to move the empty pipe. The machine is more convenient to operate. All switch buttons use 24V safe voltage, remote control and manual dual control operation. People next to the machine and people holding the pipe can accurately start and stop the machine as needed, and there is no residual material spilling during the working process. The lifting hopper rises when moving, and the hopper is placed on the ground when working. The bucket truck can directly pour the material into the hopper to save labor for loading. Imported motor oil pump control system, simulates phase loss, prevents reverse rotation, prevents leakage, and prevents machine burnout.

WANCHI

THE FOLLOWING ARE PRODUCT-RELATED ACCESSORIES:

