

Website: www.global-flange.com



CHINA FLANGE FITTINGS MANUFACTURER

Hebei Chiken Pipeline Equipment Co., Ltd.

Phone

+86 15733710333

WhatsApp / WeChat

+86 15733710333

E-mail

info@global-flange.com

Address

Wei Si East Road, Xiwang New Area,
Mengcun Hui Autonomous County,
Cangzhou City, Hebei Province.



Whatsapp



WeChat



Website



1

PART 1 01-08

About Chiken

01-02

- ◆ Company Overview
- ◆ Product Advantages
- ◆ Team Advantages
- ◆ Production Advantages

Production Process

03

Production

04

- ◆ Production workshop
- ◆ Key points in the synthetic production process

Service

05-08

- ◆ Service Market
- ◆ Cooperation Process
- ◆ After-sales service
- ◆ Service advantage

2

PART 2 09-38

Flange

11-18

- ◆ Neck welding flange
- ◆ Neck flat welding flange
- ◆ Plate type flat welding flange
- ◆ Blind Plate
- ◆ Socket flange
- ◆ Threaded flange
- ◆ Loose flange
- ◆ Eight-hole blind flange

Pipe fittings

19-30

- ◆ 90° Elbow
- ◆ 180° Elbow
- ◆ 45° Elbow
- ◆ Reducing elbow
- ◆ Tee
- ◆ Reducing Tee
- ◆ Four-way
- ◆ Oblique Tee
- ◆ Eccentric reducer
- ◆ Concentric reducer
- ◆ Pipe cap
- ◆ Pipe bending

Accessories

31-38

- ◆ Steel pipe
- ◆ Rubber soft connection
- ◆ Bellows
- ◆ Support bracket
- ◆ Compensator
- ◆ Rotary compensator
- ◆ Metal hose
- ◆ Manhole

Company Overview

Hebei Chiken Pipeline Equipment Co., Ltd. Located in Mengcun Hui Autonomous County, the "Pipe Fittings Capital" of China, near Tianjin Port and Beijing, with an advantageous location and convenient transportation. With rich experience and technical expertise, the company has become a comprehensive pipeline equipment enterprise integrating R&D, manufacturing, and sales, providing flange pipe fittings to 60 countries and regions.

Product Advantages

The company produces a wide range of flanges and pipe fittings, covering various standards and specifications such as national standards, American standards, Japanese standards, British standards, and German standards. The main materials include carbon steel, stainless steel, and alloy steel. Products include flanges, elbows, tees, reducers, bends, caps, and socket fittings, with an annual production capacity of 30,000 tons. Our products are widely used in petrochemical, power, chemical, shipbuilding, pharmaceutical, and paper industries.

Team Advantages

The company currently has 325 employees, including 18 senior engineers, 40 assistant engineers, and 20 technicians. Our sales team works closely with the R&D department to ensure we provide the latest technical support and solutions to customers. Our international sales team also offers professional service and support to global clients, committed to providing the best technical support and personalized service.



Production Advantages

20⁺ years



International Market Service Experience

30,000⁺ tons



Annual Production Capacity

70⁺ peoples



Technical Team

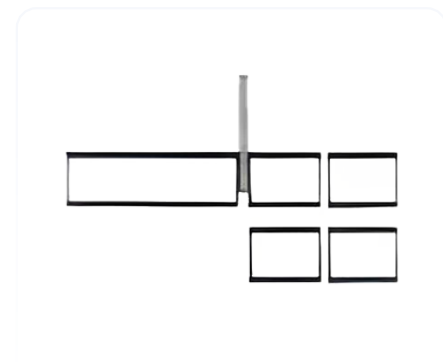
To ensure high product quality and precision, we strictly control every production process. From chemical element analysis and metal testing to non-destructive testing, we monitor quality from multiple dimensions. Our newly introduced direct-reading spectrometer equipment accurately tests the chemical composition of various metal materials to ensure that every product meets strict quality standards.

The company has been established for over 20 years, specializing in the design, production, and manufacturing of pipe fittings. It has complete production facilities and processes, covering an area of 50,000 square meters, with a building area of 20,000 square meters. It is equipped with more than 10 pipe fitting flange production lines, covering forging, pressing, medium-frequency extrusion, machining, cold forming, hot extrusion, and heat treatment processes. We have multiple standardized workshops, including cutting, welding, assembly, heat treatment, machining, and pre-treatment workshops, to meet various production requirements.

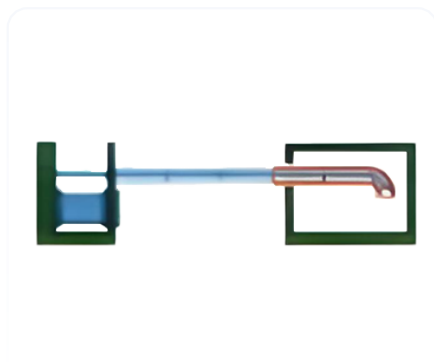
Our products are not only popular in China, covering more than 30 provinces and regions, but also exported to over 20 countries and regions worldwide, including Asia, Southeast Asia, Africa, and North America. The company will continue to expand its international market share, seeking more partners and providing more professional and diversified pipe fitting solutions globally.

Excellent Manufacturer Flanges and Fittings from China

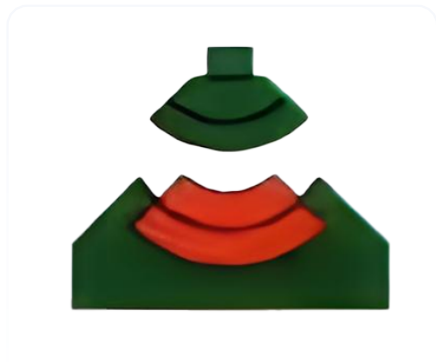




Material Cutting



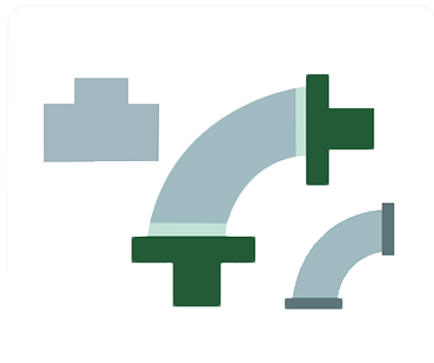
Medium Frequency
Heat Forming



Calibration



Heat Treatment



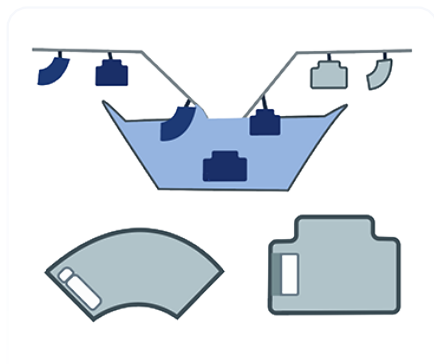
Final Processing



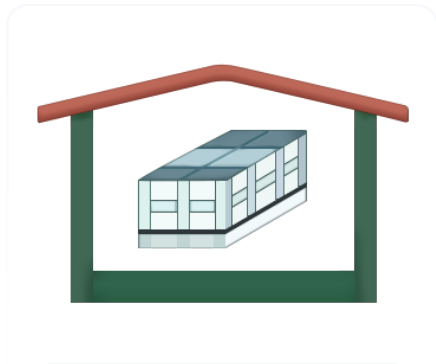
Non-destructive Testing



Surface Treatment



Coating and Marking



Packaging and Delivery

Production workshop



Key points in the synthetic production process

01

Precision

Precision ensures that every production step adheres strictly to design specifications, preventing deviations that could affect product functionality and assembly. High-precision equipment and strict process controls ensure the final product's accuracy and consistency.

02

Quality Control

Quality control spans the entire production process, from raw material inspection to finished product testing, ensuring the product meets standards and requirements. Different testing methods are used to ensure the product's safety and reliability.

03

Performance Optimization

Performance optimization improves the material's strength, corrosion, and wear resistance through process adjustments like heat and surface treatments. Effective process design ensures long-term efficiency and stability.

Service Market



Increase Global Brand Awareness: Expand business networks in multiple regions to enhance brand influence in the pipeline equipment industry, aiming to become a recognized global brand. **Hebei Chiken Pipeline Equipment Co., Ltd. expand International Market Share:** Increase sales in key markets such as Asia, Europe, North America, and Africa, with a focus on industries like petrochemicals, power, chemicals, and shipbuilding.

Build Long-Term Partnerships: Establish stable, long-term relationships with overseas distributors, agents, and end users to ensure sustainable growth.

Product Export Growth: Leverage existing production capacity of 6,000 tons per year to drive steady export growth, aiming for a 50% increase in international market sales within the next five years.

Global coverage: Customer Relations & Service In international markets, we focus on building long-term, stable customer relationships, providing comprehensive service guarantees. Our international business team is highly professional and communicates in multiple languages, ensuring accurate and efficient information exchange. We understand the diversity of international markets, so our solutions are flexible to meet the needs of different cultures and countries.

01

Participating in International Exhibitions

We actively participate in industry exhibitions worldwide to showcase our latest products and technological achievements, while also establishing connections.

02

Establishing Overseas Branches

We plan to establish overseas branches in key international markets to better understand local demand, provide localized services, and strengthen communication and cooperation with local customers.

03

Online Promotion & Social Media

We use the internet and social media platforms to enhance the company's visibility in international markets. By regularly posting company updates and case studies, we attract more attention from international customers.

04

Cooperating with International Traders

We seek to build partnerships with international traders to expand our global reach and promote our products to a wider market through their networks.

Cooperation Process



Initial Communication & Requirement Confirmation

The customer contacts us via phone, email, or online consultation to confirm the intention to cooperate. We will conduct initial discussions based on the customer's needs (e.g., product type, specifications, quantity) to confirm project details.



Technical Support & Solution Design

Our technical team provides professional support, answering questions on product applications, specifications, and technical issues. If the customer has special requirements, we offer customized product solutions and design adjustments as needed.



Quotation & Contract Signing

Based on the customer's needs and design solution, we provide a detailed quote, including product pricing, delivery times, and payment terms. After the customer confirms the quote, both parties sign a formal contract to ensure smooth cooperation.



Production & Manufacturing

Following the contract, we begin production of customized products or prepare in-stock items. During production, the customer can track progress, and we ensure timely completion of the order.



Quality Inspection & Confirmation

Once production is complete, the products undergo strict quality inspection and testing, including size, performance, and appearance. The customer may request on-site inspection or a test report to ensure compliance with standards.



Packaging & Logistics Arrangement

We ensure safe transport through rigorous packaging processes. Based on customer requirements, we offer flexible logistics options and delivery times to ensure timely delivery.

After-sales service

Multilingual Online Technical Support

We have a dedicated multilingual support team available 24/7 to respond to customer inquiries and issues. Through email, video conferencing, and other channels, we provide real-time, efficient technical support for our international customers, ensuring a smooth experience with our products.

Regular Remote Monitoring & Diagnostics

The company is equipped with a professional repair team skilled in pipeline and flange fault diagnosis and repair. Whether it's wear and aging during normal use or damage caused by unexpected events, the repair team can efficiently restore and provide solid after-sales support.

Customer Emergency Response Plan

An emergency response plan for major customer failures is in place, mobilizing the company's strongest technical resources to assist customers in restoring production as quickly as possible.

International Logistics & Spare Parts Service

We cooperate with reliable international logistics companies to offer fast and secure shipping services. For parts replacement or repairs, we ensure timely delivery, minimizing downtime caused by logistics issues.

Regular Customer Satisfaction Surveys

We regularly send customer satisfaction surveys to our international clients to gather feedback on their experience. Based on this feedback, we continuously optimize our after-sales service process to ensure customer satisfaction with our products and services.

Global Service Network Coverage

For products requiring factory repairs or maintenance, we provide comprehensive cross-border services, including logistics and customs handling. This ensures international customers can easily and quickly maintain their products, reducing maintenance time.

Service advantage

With a professional team and innovative technology, we offer fully customized services to ensure precise and efficient product manufacturing.

For buyers



Abundant supply

Provide a stable supply chain to ensure distributors always have sufficient product inventory, avoiding stockouts. We have strong production capacity to adjust resources based on market demand and meet distributors' sales needs.



Product Diversification

Offer a wide range of product series and various specifications, including pipes, flanges, elbows, tees, etc., to meet the needs of different customer groups.



Customization Service

Offer customized services based on distributor needs, with products tailored to specific specifications, materials, and surface treatments, helping distributors meet various customer demands.



Delivery Assurance

Provide flexible delivery schedules and various shipping methods to ensure distributors receive goods on time and deliver them to end customers as promised.

For end customers



High-Quality Products

Offer high-quality products that meet international standards to ensure brand competitiveness. Strict quality control to ensure the stability and reliability of every product.



Customization Service

Provide customized products and packaging to meet the specific needs of brand owners. Support exclusive designs and specifications to help brands create unique products.



Brand Support

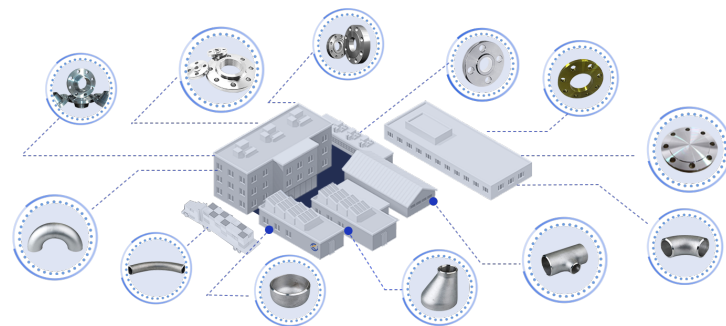
Provide private label and brand promotion services to help brand owners enhance their market presence. Offer marketing materials and advertising support to increase brand exposure.



Flexible Supply and Inventory Management

Provide flexible supply methods and inventory management to ensure timely delivery, avoiding stockouts or excess inventory. Adjust production and distribution plans according to demand to ensure smooth brand operations.

PRODUCT CATALOG



Flange

11-18

- ◆ Neck welding flange
- ◆ Neck flat welding flange
- ◆ Plate type flat welding flange
- ◆ Blind Plate
- ◆ Socket flange
- ◆ Threaded flange
- ◆ Loose flange
- ◆ Eight-hole blind flange

Pipe fittings

19-30

- ◆ 90° Elbow
- ◆ 180° Elbow
- ◆ 45° Elbow
- ◆ Reducing elbow
- ◆ Tee
- ◆ Reducing Tee
- ◆ Four-way
- ◆ Oblique Tee
- ◆ Eccentric reducer
- ◆ Concentric reducer
- ◆ Pipe cap
- ◆ Pipe bending

Accessories

31-38

- ◆ Steel pipe
- ◆ Rubber soft connection
- ◆ Bellows
- ◆ Support bracket
- ◆ Compensator
- ◆ Rotary compensator
- ◆ Metal hose
- ◆ Manhole

Neck welding flange



Describe

Neck welding flange is a flange commonly used in high-pressure pipeline systems. It has strong pressure resistance and good sealing. The flange is welded to the pipeline through the flange neck and can effectively withstand the high pressure and high temperature in the pipeline. Neck welding flange is widely used in petroleum, chemical, metallurgy, electric power and other industries, and is suitable for pipeline systems that need to withstand high working pressure and temperature.

Product Features

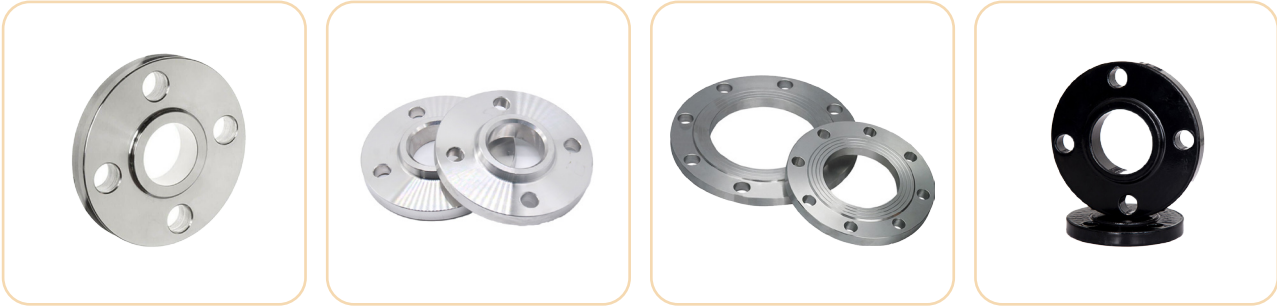
- Strong pressure bearing capacity: The neck design makes the welding part of the flange consistent with the wall thickness of the pipe, which can effectively disperse stress and is suitable for high-pressure environments.
- Excellent sealing: The inner and outer walls of the flange are smooth, there is no gap after welding, and the sealing performance is excellent.
- High temperature and high pressure resistance: widely used in high temperature and high pressure pipeline systems to ensure the safety and stability of pipeline operation.
- Compact structure: The neck of the flange can be tightly combined with the pipeline, providing strong support to avoid loosening or deformation caused by pipeline pressure.
- Strong applicability: It is suitable for a variety of working conditions, especially for heavy-load pipeline systems that require long-term stable operation.

Technical parameters

Material	Carbon steel, stainless steel, alloy steel, cast steel, etc.
Specification	DN15 ~ DN1200 (1/2" ~ 48")
Pressure level	PN6 ~ PN400
standard	Comply with international standards such as GB, ANSI, DIN, JIS, etc.
Surface treatment	Galvanizing, spraying, phosphating, etc.
Connection	Butt welding connection (suitable for high pressure pipelines)
Temperature range	-50°C ~ 450°C
Pipe wall thickness	Usually suitable for Schedule 40/80 pipe wall thickness, can also be customized according to customer requirements

- Packaging: The flanges are packaged in protective packaging such as wooden boxes, pallets, and bubble films to ensure that they are not damaged during transportation.

Neck flat welding flange



Describe

The flat welding flange with neck is a high-strength, high-sealing flange commonly used for pipeline connections in high-pressure and high-temperature environments. It is welded to the pipeline through its neck, offering a strong connection and better pressure resistance.

Product Features

- Strong connectivity: The flange neck is welded to the pipe, which enhances the strength and pressure resistance of the connection and is suitable for pipeline systems that withstand high pressure and high temperature.
- Superior sealing: The neck design ensures that the flange and the pipe are tightly connected, providing excellent sealing effect and preventing leakage.
- Adapt to high temperature and high pressure: It is suitable for high temperature and high pressure working environment and can operate stably for a long time under extreme conditions.
- High reliability: The flange neck is usually consistent with the wall thickness of the pipe, and the pressure is evenly distributed, which reduces stress concentration and helps to improve durability.
- Wide applicability: It is suitable for various industries, especially for pipeline connections in oil, natural gas, chemical, electric power, metallurgy and other industries.

Technical parameters

Material	Carbon steel, stainless steel, alloy steel, cast steel, etc.
Specification	DN15 ~ DN1200 (1/2" ~ 48")
Pressure level	PN6 ~ PN250
standard	Comply with international standards such as GB, ANSI, DIN, JIS, etc.
Surface treatment	Spraying, galvanizing, phosphating, etc.
Connection	Neck welding
Temperature range	-50°C ~ 450°C
Pipe wall thickness	Applicable to Schedule 40/80 pipe wall thickness, special requirements can be customized

- Packaging: Flanges choose appropriate packaging methods according to size and quantity, such as wooden boxes, pallets, bubble films, etc., to ensure that the products are not damaged during transportation.
- Transportation: According to customer needs, you can choose sea, air, land and other methods to ensure on-time delivery.

Plate type flat welding flange



Describe

Plate-type flat-weld flange is a common pipe connection flange with the characteristics of simple structure, low cost and convenient installation. It is suitable for pipeline systems with low to medium pressure and is widely used in industries such as petroleum, natural gas, chemical industry, and electric power. Plate-type flat-weld flange is connected to the pipeline by welding, without the need for additional threads or holes, ensuring the sealing and stability of the connection.

Product Features

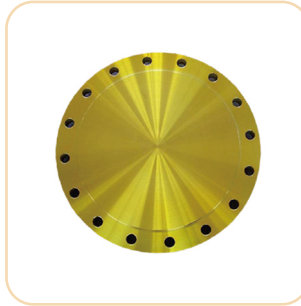
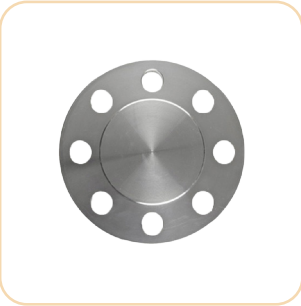
- Simple structure: simple design, low production cost, easy to produce and process.
- Easy to install: connected to the pipeline by flat welding, the installation process is simple and efficient.
- Good sealing: flat welding design makes the connection between flange and pipeline tighter, ensuring good sealing of the system.
- High durability: made of high-quality steel, with strong corrosion resistance and high temperature resistance, suitable for various harsh environments.
- Widely applicable: suitable for many industries such as petroleum, chemical, electric power, metallurgy, pharmaceuticals, etc.

Technical parameters

Material	Carbon steel, stainless steel, alloy steel, low alloy steel, etc.
Specification	DN15 ~ DN1200 (1/2" ~ 48")
Pressure level	PN6 ~ PN64
standard	Comply with international standards such as GB, ANSI, DIN, JIS, etc.
Surface treatment	Galvanizing, spraying, anti-corrosion coating, etc.
Connection	Flat welding connection
Temperature range	-20°C ~ 300°C
Thickness range	Adjustable according to standard requirements to meet different pressure needs.

- Packaging: According to customer needs, we provide wooden boxes, pallets or bubble film packaging to ensure safety during transportation.
- Transportation: We can provide sea, air, land and other modes according to customer requirements to ensure on-time delivery.

Blind Plate



Describe

A blind flange is a solid flange used to seal ports or openings in pipelines, preventing leakage during installation, maintenance, or testing. It is bolted to flange joints to close openings securely and is widely used in industries like petroleum, natural gas, chemicals, and power.

Product Features

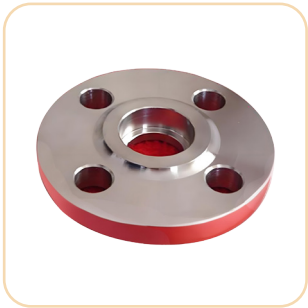
- Strong sealing: The blind flange provides extremely high sealing through the tight connection with the pipe flange, effectively preventing the leakage of fluid, gas or other media.
- Hole-free design: The blind flange does not have any through holes, completely closes the opening of the pipe, and is suitable for the end of the pipe that does not require flowing media.
- High strength: Made of high-strength materials, the blind flange has good pressure resistance and high temperature and corrosion resistance, and is suitable for harsh working environments.
- Easy installation: It is connected to the flange by bolts, which is simple to install and disassemble, and is convenient for long-term use and maintenance.
- Strong adaptability: The blind flange is suitable for pipeline systems of various specifications, and can be customized in different materials and sizes according to customer needs.

Technical parameters

Material	Carbon steel, stainless steel, alloy steel, cast steel, etc.
Specification	DN15 ~ DN1200 (1/2" ~ 48")
Pressure level	PN6 ~ PN250
standard	Comply with international standards such as GB, ANSI, DIN, JIS, etc.
Surface treatment	Spraying, galvanizing, phosphating, etc.
Connection	Bolted connections
Temperature range	-50°C ~ 450°C
Pipe wall thickness	Suitable for different pipe wall thicknesses, can be customized according to customer requirements

- Packaging: According to the size and quantity of blind flanges, wooden boxes, pallets, bubble films and other packaging methods are usually used to ensure that the products are intact during transportation.

Socket flange



Describe

Socket welding flange is a flange used in high pressure systems, usually used to connect small diameter pipes. It is sealed and connected by inserting the pipe into the inner hole of the flange and welding it on the flange. Socket welding flange has good strength and sealing performance, and is widely used in pipeline connections under high pressure, low temperature and high temperature conditions in petroleum, chemical, electric power, steel and other industries.

Product Features

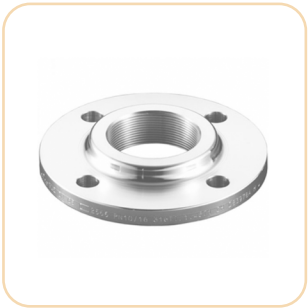
- Excellent sealing: The insertion design of the socket welding flange ensures that the connection surface is tight and has excellent sealing performance.
- Suitable for high-pressure systems: Suitable for small-diameter pipeline systems, withstand high pressure and temperature, and are often used in high-pressure, low-temperature and high-temperature environments.
- Strong structure: The socket design enhances the integrity of the flange and the pipeline and reduces the risk of leakage.
- Easy to install: The installation process is simple, and the pipeline is directly welded after being inserted into the flange, which is easy and fast to operate.
- Widely used: Suitable for various industrial fields, especially for occasions with high requirements for sealing and strength.

Technical parameters

Material	Carbon steel, stainless steel, alloy steel, cast steel, etc.
Specification	DN15 ~ DN1200 (1/2" ~ 48")
Pressure level	PN6 ~ PN250
standard	Comply with international standards such as GB, ANSI, DIN, JIS, etc.
Surface treatment	Spraying, hot-dip galvanizing, chrome plating, etc.
Connection	Socket welding
Temperature range	-50°C ~ 450°C
Pipe wall thickness	Usually used for Schedule 40/80 pipes, but can also be customized upon request.

- Packaging: wooden boxes, pallets, bubble films and other packaging methods are used to ensure the safety of flanges during transportation.
- Transportation: It can be delivered by sea, air, land and other means to ensure on-time delivery.

Threaded flange



Describe

Threaded flange is a pipe flange connected by threads. It is widely used in industries such as petroleum, chemical, electric power, and shipbuilding to connect pipelines or equipment. The main feature of threaded flange is that it does not require welding and is directly connected to the pipeline through threads, which is easy to disassemble and install. This flange is widely used in low-pressure systems and pipeline connections, especially in places where welding is not suitable.

Product Features

- No welding design: Through threaded connection, the influence of high temperature during welding is avoided, which is suitable for places with high welding requirements or inconvenient welding.
- Easy to install and disassemble: The threaded flange connection method is simple, easy to install and disassemble, saving a lot of time and labor costs.
- High reliability: The threaded connection is tight and has good sealing, which can ensure the long-term stable operation of the pipeline system.
- Widely applicable: Applicable to low-pressure pipeline systems, petrochemicals, food, pharmaceuticals, shipbuilding and other industries.

Technical parameters

Material	Carbon steel, stainless steel, alloy steel, etc.
Specification	1/2" ~ 48" (DN15 ~ DN1200)
Pressure level	PN6 ~ PN25
standard	Comply with international standards such as GB, ANSI, DIN, etc.
Surface treatment	Hot dip galvanizing, electroplating, spraying, etc.
Connection	Threaded connection (NPT, BSP, etc.)
Temperature range	-20°C ~ 300°C

- Packaging: wooden boxes, pallets or customized packaging according to customer needs.
- Transportation: can be shipped by sea, air, land, etc. to ensure timely and safe delivery.

Loose flange



Describe

A loose flange is a pipe connection flange that uses bolts and gaskets instead of welding. It allows easy disassembly and replacement due to the gap between the flange and pipe. Commonly used in medium and low-pressure systems that require regular maintenance or inspection, loose flanges offer easy installation, lower maintenance costs, and flexibility. They are widely used in industries like chemicals, power, oil and gas, and water supply.

Product Features

- No welding connection: Loose flanges do not require welding, and rely on bolts and gaskets to achieve connection, avoiding the process difficulty and cost brought by welding.
- Easy to disassemble: Due to the bolt connection method, the installation and disassembly of loose flanges are more convenient, suitable for pipeline systems that require regular inspection and maintenance.
- Easy maintenance: When parts need to be replaced, cleaned or inspected, the flange can be easily disassembled to reduce the downtime of the pipeline system.
- High flexibility: Loose flanges are suitable for a variety of pipeline systems, especially medium and low pressure pipelines, and can be quickly adjusted and replaced as needed.
- Economical and practical: Compared with fully welded flanges, loose flanges reduce the cost of welding processes, making installation and maintenance more economical.

Technical parameters

Material	Carbon steel, stainless steel, alloy steel, cast steel, etc.
Specification	DN15 ~ DN1200 (1/2" ~ 48")
Pressure level	PN6 ~ PN40
standard	Comply with international standards such as GB, ANSI, DIN, JIS, etc.
Surface treatment	Spraying, galvanizing, phosphating, etc.
Connection	Bolted connections
Temperature range	-20°C ~ 250°C
Pipe wall thickness	Suitable for different pipe wall thicknesses, can be customized according to customer requirements

- Packaging: According to the size and quantity of flanges, protective packaging methods such as wooden boxes, pallets or bubble films are used to ensure that the products are intact during transportation.

Eight-hole blind flange



- Packaging: According to the size and quantity of the blind plate, wooden boxes, pallets, bubble films and other protective packaging methods are usually used to ensure that the product is intact during transportation.
- Transportation: We provide a variety of transportation methods, including sea, air, land, etc., to ensure that the product arrives on time according to customer needs.

Describe

Plate-type flat-weld flange is a common pipe connection flange with the characteristics of simple structure, low cost and convenient installation. It is suitable for pipeline systems with low to medium pressure and is widely used in industries such as petroleum, natural gas, chemical industry, and electric power. Plate-type flat-weld flange is connected to the pipeline by welding, without the need for additional threads or holes, ensuring the sealing and stability of the connection.

Product Features

- High sealing: By connecting with the pipeline flange, the eight-shaped blind plate provides excellent sealing effect and effectively prevents medium leakage.
- Multi-hole design: Unlike traditional blind plates, the eight-shaped blind plate is usually designed with multiple bolt holes to ensure a more secure installation and is suitable for large-diameter pipelines.
- Pressure-resistant and durable: Made of high-strength materials, the eight-shaped blind plate has excellent pressure resistance and corrosion resistance, and is suitable for use in various harsh working conditions.
- Convenient installation and disassembly: The eight-shaped blind plate is connected to the flange with bolts, which is easy to install and can be reused, suitable for long-term closed pipeline interfaces.
- Strong adaptability: Suitable for different working environments, especially an essential tool when the pipeline needs to be closed for inspection, pressure testing, dismantling, etc.

Technical parameters

Material	Carbon steel, stainless steel, alloy steel, cast steel, etc.
Specification	DN15 ~ DN1200 (1/2" ~ 48")
Pressure level	PN6 ~ PN250
standard	Comply with international standards such as GB, ANSI, DIN, JIS, etc.
Surface treatment	Spraying, galvanizing, phosphating, etc.
Connection	Bolted connections
Temperature range	-50°C ~ 450°C
Pipe wall thickness	Suitable for different pipe wall thicknesses, can be customized according to customer requirements.

90° Elbow



Describe

The 90° elbow is a fitting used to change the direction of pipelines. It helps adjust the pipeline direction, especially in tight spaces or complex layouts. Widely used in industries like petroleum, chemical, power, and water supply, it suits various fluid media, pressure, and temperature conditions.

Product Features

- Angle Design: The 90° elbow quickly changes the pipeline direction by 90 degrees, making it ideal for situations that need sharp turns.
- High Strength and Pressure Resistance: The 90° elbow is usually made of high-strength steel or alloy materials, has good pressure resistance, and is suitable for high-pressure environments.
- Corrosion Resistance: The appropriate material can be selected according to the use environment, such as stainless steel, carbon steel, alloy steel, etc., to ensure excellent corrosion resistance in corrosive media.
- Strong Adaptability: It can be used for a variety of pipeline connection methods, including welding, threading, flange connection, etc., to meet different installation requirements.
- Customizable Size: According to actual needs, the 90° elbow can provide different specifications and sizes to adapt to various pipeline systems.
- Fluid Flow Optimization: While the 90° elbow slightly increases flow resistance compared to the 45° elbow, its design still allows fluid to flow smoothly, making it suitable for various pipeline systems.

Technical parameters

Material	Carbon steel, stainless steel, alloy steel, copper, plastic, etc.
Specification	DN15 ~ DN1200 (1/2" ~ 48"), customized according to requirements
Pressure level	PN6 ~ PN250
Connection	Butt welding, threaded connection, flange connection, socket connection, etc.
Temperature range	-50°C ~ 450°C, depending on the material and working conditions
standard	Comply with international standards such as GB, ANSI, DIN, JIS, etc.

- Packaging: The 90° elbows are typically packaged using methods like wooden boxes, pallets, and bubble film, depending on their specifications. This ensures the products are protected from damage during transportation.

180° Elbow



Describe

The 180° elbow is a commonly used fitting in pipeline systems designed to change the flow direction of fluid or gas by 180 degrees. It is typically used to reverse the flow direction or avoid resistance caused by sharp turns, especially in situations where the direction needs to be adjusted during pipeline installation. This type of elbow is widely used in industries like petroleum, chemical, electric power, construction, and municipal systems, ensuring smooth operation and long-term pipeline stability.

Product Features

- High pressure bearing capacity: The 180° elbow design has a high pressure bearing capacity and can withstand the pressure of the fluid in the pipeline to ensure the stable operation of the pipeline system.
- Strong corrosion resistance: It is often made of anti-corrosion materials such as stainless steel and carbon steel, and is suitable for pipeline systems with various corrosive media, such as pipelines in the chemical, petroleum and other industries.
- Smooth fluid flow: Compared with 90° elbows, 180° elbows have lower fluid resistance, which can ensure smoother fluid flow in the pipeline and reduce energy loss.
- Space saving: 180° elbows are usually small in size and are suitable for the installation of pipelines in limited spaces. They can effectively save installation space and adjust the direction of the pipeline.
- Diverse specifications: According to different pipeline requirements, 180° elbows of different sizes, materials, and connection methods can be provided to meet the installation requirements of various systems.

Technical parameters

Carbon Steel	Commonly used in conventional industrial pipelines, with strong pressure bearing capacity and suitable for most non-corrosive fluids
Stainless steel	Suitable for corrosion-resistant, high-temperature-resistant, high-pressure environments, such as chemical, food processing and other industries
alloy steel	Applicable to high temperature and high pressure conditions, commonly used in oil and natural gas pipeline systems
PVC/Plastic	Used in low-pressure water supply and drainage piping systems, and has a narrow range of ambient temperature.
copper	Suitable for some pipes that require good conductivity

45° Elbow



Describe

The 45° elbow is a commonly used fitting in piping systems, designed to change the direction of the pipe by 45 degrees. It is ideal for situations that require a gentler turn, allowing smooth fluid flow while reducing friction and pressure loss. Due to its moderate angle, the 45° elbow is suitable for most fluid piping systems and is widely used in industries such as petroleum, chemical, electricity, construction, and water supply and drainage.

Product Features

- Angle design: The 45° bending angle can effectively change the flow direction of the fluid. Compared with the 90° elbow, the fluid friction loss is smaller, the pressure loss is lower, and the energy loss of the system is reduced.
- Wide applicability: It is suitable for a variety of pipeline connections, such as oil, natural gas, chemical, HVAC, water supply systems and other fields, especially in the pipeline layout that requires a certain angle of turning, it has strong adaptability.
- Multiple materials: 45° elbows of different materials can be selected according to different conditions such as the medium, temperature, and pressure of the pipeline, such as carbon steel, stainless steel, alloy steel, plastic, etc.
- High pressure resistance and corrosion resistance: Made of high-strength materials, it has excellent pressure resistance and corrosion resistance, and is suitable for high temperature, high pressure and corrosive media environments.
- Multiple connection methods: The 45° elbow can provide different connection methods, including welding, threading, flange connection, etc., to ensure tight connection and stability with the pipeline system.
- Easy to install: Due to its simple design, the 45° elbow is easy to install and disassemble, and can be used for various pipeline installation and maintenance work.

Technical parameters

Material	Carbon steel, stainless steel, alloy steel, copper, aluminum, plastic, etc.
Specification	DN15 ~ DN1200 (1/2" ~ 48") or customized according to customer needs
Pressure level	PN6 ~ PN250
Connection	Butt welding, threaded connection, flange connection, socket connection, etc.
Temperature range	-50°C ~ 450°C (specific temperature range varies according to material and application)
standard	Conforms to GB, ANSI, DIN, JIS and other international standards.

Reducing elbow



- Packaging: Depending on the size and quantity, the reducer elbows are usually packaged in protective packaging such as wooden boxes, pallets, bubble films, etc. to ensure that the products are intact during transportation.
- Transportation: We provide a variety of transportation methods such as sea, air, and land transportation to ensure that the products are delivered to customers on time.

Describe

The reducing elbow (unequal diameter elbow) connects pipes of different diameters, changing both the direction and size of the pipe. One end has a larger diameter than the other. It is ideal for connecting pipes of varying sizes and helps improve fluid flow, reduce resistance, and optimize pipeline layout. Reducing elbows are commonly used in industries like petroleum, chemical, electric power, metallurgy, and water supply.

Product Features

- The reducing elbow provides a smooth transition between pipe diameters, minimizing the impact of sudden size changes on fluid flow and reducing flow loss.
- Reduce fluid resistance: By optimizing the fluid transition path, the reducing elbow effectively reduces the resistance of the fluid and reduces pressure loss, thereby improving the operating efficiency of the pipeline system.
- Strong adaptability: The reducing elbow is suitable for the connection of pipes of various sizes, especially for applications that require the conversion of pipe direction and size in different industries and different working conditions.
- The reducing elbow is made of high-strength materials, offering strong pressure resistance, corrosion resistance, and high-temperature durability, making it suitable for harsh working conditions.
- Compact structure: The reducing elbow is compactly designed to save space in the pipeline system, especially for complex pipeline layout and narrow installation environment.
- Strong customizability: The reducing elbow can be customized according to customer needs, with different angles (such as 45°, 90°, 180°, etc.) and different pipe connection sizes to meet various engineering applications.

Technical parameters

Material	Carbon steel, stainless steel, alloy steel, copper, nickel-based alloy, etc.
Specification	DN15 ~ DN1200 (1/2" ~ 48"), can also be customized according to customer requirements
Pressure level	PN6 ~ PN250, suitable for medium and low pressure piping systems
Temperature range	-50°C ~ 450°C (depending on materials and working conditions)
standard	Comply with international standards such as GB, ANSI, DIN, JIS, ASME, etc.
angle	Common elbow angles such as 45°, 90°, 180°, etc. can also be customized according to needs
Connection	Welding, flanges, clamps, etc.
Surface treatment	Spraying, galvanizing, phosphating, etc.

Tee



Describe

A tee is a common pipe fitting used for flow diversion, convergence, or direction change in a pipe system. It connects three pipes, either in a straight or branch connection, to distribute or converge fluids. There are different types of tees, such as equal diameter tees and reducing tees, depending on the pipe requirements. Tees are widely used in industries like petroleum, chemical, electric power, construction, and water treatment.

Product Features

- Multi-flow design: The tee usually has three connection ports, one of which can be used to connect different pipes, or to divert the fluid in the pipe to multiple directions.
- Equal diameter and different diameters: Equal diameter tee: All pipes have the same diameter, suitable for connecting pipes of the same diameter.
- Different diameter tee: Suitable for connecting pipes of different diameters, usually used for flow distribution or reducing flow rate.
- High strength and pressure resistance: The tee is made of high-strength materials and has strong pressure resistance, suitable for use in high pressure and high temperature environments.
- Corrosion resistance: According to the properties of the medium, corrosion-resistant materials such as stainless steel, carbon steel, alloy steel, and plastic can be selected to ensure long-term stable operation.
- Various connection methods: The tee can be connected by welding, threading, flanges and other methods to meet the needs of different pipeline systems.
- Fluid distribution and convergence: The tee can effectively distribute fluids to different pipeline directions, or converge fluids from multiple flow paths into one pipeline to ensure the efficient operation of the pipeline system.

Technical parameters

Material	Carbon steel, stainless steel, alloy steel, cast steel, copper, plastic, etc.
Specification	DN15 ~ DN1200 (1/2" ~ 48"), can also be customized according to customer needs
Pressure level	PN6 ~ PN250, depending on the materials used and the working environment
Connection	Butt welding, threaded connection, flange connection, socket connection, etc.
Temperature range	-50°C ~ 450°C, the applicable temperature range varies depending on the material
standard	Comply with international standards such as GB, ANSI, DIN, JIS, etc.

Reducing Tee



- Packaging: According to the specifications and quantity of the reducer, wooden boxes, pallets, bubble films and other protective packaging methods are used to ensure that the product is not damaged during transportation.
- Transportation: Provide a variety of transportation methods such as sea, air, and land transportation, and ensure on-time delivery according to customer needs.

Describe

A reducing tee connects pipes of different diameters to divert or converge fluid. It allows fluid flow from a larger pipe to a smaller one, or vice versa, and is commonly used when pipe sizes need to change. Reducing tees come in two types: concentric and eccentric, based on whether the branch axes are in the same plane. They are widely used in industries like petroleum, chemical, power, construction, and metallurgy.

Product Features

- Diameter Change: Connects pipes of different diameters for efficient fluid distribution or convergence.
- Wide Applicability: Suitable for various pipeline systems handling liquids, gases, or mixtures under different pressures and temperatures.
- Concentric and Eccentric Design: Branch pipes can either share the same center for coaxial connections or have different centers for space-sensitive systems or specific fluid flow directions.
- High Strength and Pressure Resistance: Made of durable materials, able to withstand high pressures and harsh conditions.
- Space Saving: Reduces equipment and optimizes pipeline layout.
- Variety of Materials: Available in carbon steel, stainless steel, alloy steel, etc., to suit different conditions.
- Flexible Connection Methods: Supports welding, flange, and threaded connections for easy integration with other systems.

Technical parameters

Material	Carbon steel, stainless steel, alloy steel, cast steel, etc.
Specification	DN15 ~ DN1200 (1/2" ~ 48"), can be customized according to customer requirements
Pressure level	PN6 ~ PN250, depending on the material used and the working environment
Connection	Welding, threaded connection, flange connection, etc.
Temperature range	-50°C ~ 450°C (depending on material and working environment)
form	Concentric reducing tee, eccentric reducing tee
standard	Comply with international standards such as GB, ANSI, DIN, JIS, etc.

Four-way



- Packaging: According to the specifications and quantity of the reducer, wooden boxes, pallets, bubble films and other protective packaging methods are used to ensure that the product is not damaged during transportation.
- Transportation: Provide a variety of transportation methods such as sea, air, and land transportation, and ensure on-time delivery according to customer needs.

Describe

A cross is a pipe fitting that connects four pipes, allowing multi-directional fluid flow diversion or convergence. Similar to a tee but with an extra connection, it's used in complex systems across industries like petroleum, chemical, power, metallurgy, pharmaceuticals, and water supply.

Product Features

- Multi-directional connection: The four-way pipe connects the pipeline system through four connection ports, which can distribute or converge the fluid in four directions and is suitable for complex pipeline layouts.
- Various types: Equal diameter four-way pipe: The pipe diameters of all four connection ports are the same, which is suitable for connecting pipes of the same caliber.
- Reducing diameter four-way pipe: Used to connect pipes of different calibers, usually used for fluid distribution or flow rate regulation.
- High strength and pressure resistance: The four-way pipe is made of high-strength materials and has strong pressure resistance. It can withstand high pressure and high temperature environments to ensure the safe operation of the pipeline system.
- Corrosion resistance: The four-way pipe can be made from corrosion-resistant materials like stainless steel, carbon steel, alloy steel, or plastic, ideal for transporting chemical and corrosive fluids.
- Various connection methods: The connection methods of the four-way pipe are flexible, and the common ones are welding, threaded connection, flange connection, socket connection, etc., which are suitable for the needs of different pipeline systems.
- Fluid distribution and convergence: The cross-way can effectively distribute fluid from one pipe to four directions, or converge fluid from four directions into one pipe, ensuring the efficient operation of the pipeline system.

Technical parameters

Material	Carbon steel, stainless steel, alloy steel, cast steel, plastic, etc.
Specification	DN15 ~ DN1200 (1/2" ~ 48"), customized specifications can be provided according to customer needs
Pressure level	PN6 ~ PN250, depending on the materials used and the working environment
Connection	Butt welding, threaded connection, flange connection, socket connection, etc.
Temperature range	-50°C ~ 450°C, the specific temperature range depends on the selected material and working environment
standard	Comply with international standards such as GB, ANSI, DIN, JIS, etc.

Oblique Tee



- Packaging: According to the size and quantity of the inclined tees, wooden boxes, pallets, bubble films and other packaging methods are usually used to ensure that they are not damaged during transportation.
- Transportation: We provide a variety of transportation methods such as sea, air and land transportation to ensure on-time delivery according to customer needs.

Describe

An oblique tee is a pipe fitting with three ports that redirects fluid flow, reducing friction and improving efficiency. With a 45° or 60° angle between the branch and main pipe, it minimizes vortex formation. Commonly used in industries like petroleum, chemical, power, metallurgy, and water supply, it's ideal for high flow, pressure, and temperature conditions.

Product Features

- Smooth fluid flow: The design of the oblique tee makes the flow direction of the fluid inclined. Compared with ordinary tees, it can effectively reduce the resistance in the flow and ensure efficient and stable flow of the fluid.
- High sealing performance: The use of high-quality materials and precision processing ensures that the connection sealing performance of the oblique tee and the pipeline is good to avoid fluid leakage.
- Reduced turbulence: The oblique tee's design angle helps minimize turbulence, prevent energy loss, and enhance pipeline system efficiency.
- High pressure and high temperature resistance: The oblique tee adopts high-strength pressure-resistant materials, which is suitable for high temperature and high pressure working environments to ensure the stable operation of the pipeline system.
- Various types of materials: According to different working environments, the oblique tee can be made of carbon steel, stainless steel, alloy steel and other materials to meet the needs of different pipeline systems.
- Easy to install: The oblique tee usually adopts a variety of connection methods such as welding, threading, flange, etc., which is easy to install and convenient to connect with other pipeline equipment.
- Strong adaptability: It is suitable for pipeline systems of various pressures, temperatures and fluid types, and is widely used in the transmission of liquids, gases, steam and other media.

Technical parameters

Material	Carbon steel, stainless steel, alloy steel, cast steel, etc.
Specification	DN15 ~ DN1200 (1/2" ~ 48"), can be customized according to customer needs
Pressure level	PN6 ~ PN250, depending on the material used and the working environment
Temperature range	-50°C ~ 450°C (depending on materials and working environment)
Connection	Welding, threaded connection, flange connection, etc.
angle	Common angles are 45° and 60°, and other angles can be customized according to customer needs
standard	Comply with international standards such as GB, ANSI, DIN, JIS, etc.

Eccentric reducer



Describe

Eccentric reducers are pipe fittings with one end larger than the other, designed to transition fluid flow between pipes of different sizes. Unlike concentric reducers, their center lines are offset, creating an asymmetrical shape. They are commonly used to change fluid flow direction or adjust flow rates and are widely used in industries like petroleum, chemical, power, metallurgy, and shipbuilding.

Product Features

- Smooth fluid flow: Eccentric reducers minimize turbulence, maintaining stable fluid flow and reducing friction and flow loss.
- Wide application: Ideal for transitioning between different pipeline sizes, such as connecting pipes of varying diameters or liquid and gas systems.
- Reduce pressure loss: They minimize pressure loss during diameter changes, optimizing fluid flow and system efficiency.
- Adapt to harsh environments: Made from durable materials like carbon steel or stainless steel, they resist high temperatures, corrosion, and pressure.
- Reduce fluid collision: Their design lowers fluid collision and oscillation, extending pipeline lifespan.
- Easy installation: Eccentric reducers are easy to install, typically welded for quick pipe system construction.

Technical parameters

Material	Carbon steel, stainless steel, alloy steel, nickel-based alloy, etc.
Specification	DN15 ~ DN1200 (1/2" ~ 48"), etc., can be customized according to customer requirements
Pressure level	PN6 ~ PN250, suitable for piping systems with different pressure requirements
Temperature range	-50°C ~ 450°C (depending on the materials used and pipeline working conditions)
standard	Comply with international standards such as GB, ANSI, DIN, JIS, ASME, etc.
shape	Eccentric design, one side is thicker and the other side is thinner. Common shapes are 90°, 45°, 30°, etc.
Surface treatment	Anti-corrosion treatment such as spraying, galvanizing, phosphating, etc.
Connection	Connection methods such as welding, flange, clamp, etc.

- Packaging: Eccentric reducers are securely packaged in wooden boxes, pallets, or bubble film to prevent damage during transport.
- Transportation: We offer sea, air, and land transportation, ensuring timely delivery based on customer needs.

Concentric reducer



Describe

Concentric reducers connect pipes of different diameters, allowing smooth fluid transition. Their aligned pipe ports ensure stable fluid delivery. Widely used in industries like petroleum, chemical, power, and shipbuilding, they are ideal for connecting fluid and gas pipelines.

Product Features

- Smooth fluid flow: Ensures smooth fluid transition, reducing resistance and turbulence.
- Reduce pressure loss: Optimizes flow path, minimizing pressure loss and improving efficiency.
- Wide applications: Ideal for medium/low-pressure systems where pipeline symmetry is needed.
- Corrosion resistance: Made from corrosion-resistant materials like stainless steel, enhancing lifespan.
- High strength & durability: Withstands high pressure and temperature for stable long-term operation.
- Easy installation: Supports welding, flange, and threaded connections for easy setup.

Technical parameters

Material	Carbon steel, stainless steel, alloy steel, nickel-based alloy, etc.
Specification	DN15 ~ DN1200 (1/2" ~ 48"), can be customized according to customer needs
Pressure level	PN6 ~ PN250, suitable for medium and low pressure piping systems
Temperature range	-50°C ~ 450°C (depending on materials and working conditions)
standard	Comply with international standards such as GB, ANSI, DIN, JIS, ASME, etc.
Connection	Welding, flanges, clamps, etc.
Surface treatment	Spraying, galvanizing, phosphating, etc.
Design	Concentric design, smooth transition between the inner and outer diameters of the circular interfaces at both ends of the pipe

- Packaging: Concentric reducers are packed in wooden boxes, pallets, bubble films, etc. according to size and quantity to ensure that they are not damaged during transportation.
- Transportation: We provide a variety of transportation methods such as sea, air, and land transportation to ensure on-time delivery according to customer needs.

Pipe cap



Describe

Pipe caps are sealing devices used to close the ends of pipelines or temporarily plug them. They prevent contaminants from entering and leakage of media. Widely used in industries like petroleum, natural gas, chemicals, and power, pipe caps are essential in construction, maintenance, pressure testing, and transportation. They can be installed by welding, flange, or threaded connections to ensure a tight seal. Pipe caps come in various shapes (round, spherical, elliptical) and sizes, customized based on pipeline specifications and needs.

Product Features

- Powerful sealing: Effectively closes pipeline openings, preventing contaminants and ensuring medium stability.
- High sealing: High-strength materials provide excellent sealing to avoid leakage.
- Wide material selection: Materials like carbon steel, stainless steel, and alloy steel suit various conditions.
- Multiple connection methods: Options like welding, flange, and threaded connections for easy installation.
- High pressure & temperature resistance: Suitable for harsh environments, ensuring safe operation.
- Strong corrosion resistance: Corrosion-resistant materials ensure longevity in chemical environments.
- Customizable: Tailored size, thickness, material, and shape to meet specific needs.

Technical parameters

Material	Carbon steel, stainless steel, alloy steel, cast steel, etc.
Specification	DN15 ~ DN1200 (1/2" ~ 48"), can be customized according to customer requirements
Pressure level	PN6 ~ PN250 (select according to material and working conditions)
Connection	Welding, threaded connection, flange connection, etc.
Temperature range	-50°C ~ 450°C (depending on the material and working environment)
standard	Comply with international standards such as GB, ANSI, DIN, JIS, etc.
shape	Round, spherical, oval, etc.

- Packaging: According to the size and quantity of the pipe caps, protective packaging methods such as wooden boxes, pallets, bubble films, etc. are usually used to ensure that the products are not damaged during transportation.
- Transportation: We provide a variety of transportation methods such as sea transportation, air transportation, and land transportation to ensure on-time delivery according to customer needs.

Pipe bending



Describe

The elbow (or elbow pipe) is a crucial fitting used to change the direction of fluid flow in a piping system. It allows pipes to bend and connect different sections, optimizing the layout and ensuring smooth fluid movement. Elbows are categorized by bending angle, radius, material, and size, with common angles being 45°, 90°, and 180°. They are widely used in industries like petroleum, chemicals, power, construction, water supply, and drainage.

Product Features

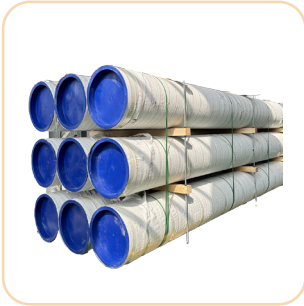
- Change the flow direction: Elbows guide fluid from one direction to another, saving space and eliminating the need for additional equipment in complex layouts.
- Multiple angles: Common angles like 45°, 90°, and 180° can be selected based on the pipeline's design requirements.
- Multiple radii: Standard and long radius elbows, with long radius elbows reducing flow resistance, are ideal for large flow, low pressure loss systems.
- High strength & pressure resistance: Made from high-strength materials, elbows withstand high pressure and temperature, suitable for demanding industrial systems.
- Strong adaptability: Available in various materials (stainless steel, carbon steel, plastic), sizes, pressure ratings, and connection types (welding, flanges, threads) to meet diverse needs.
- Fluid flow optimization: Designed to reduce friction, optimize fluid flow, and lower energy consumption by adjusting the angle and radius.

Technical parameters

Material	Carbon steel, stainless steel, alloy steel, plastic, copper, etc.
Specification	DN15 ~ DN1200 (1/2" ~ 48"), can be customized according to customer requirements
Bending Angle	Common angles such as 45°, 90°, 180°, and other angles can also be customized according to needs
Pressure level	PN6 ~ PN250 (select according to material and working conditions)
radius	Standard and long radius elbows
Connection	Welding, threaded connection, flange connection, socket connection, etc.
Temperature range	-50°C ~ 450°C, the specific temperature range depends on the material and working conditions

- Packaging: According to the specifications and quantity of the elbow, wooden boxes, pallets, bubble films, etc. are usually used for packaging to ensure that the product is not damaged during transportation.

Steel pipe



- Packaging: Steel pipes are packed in wooden boxes, pallets, wrapping films and other packaging methods according to specifications, quantity and customer needs to ensure that they are not damaged during transportation.
- Transportation: We provide a variety of transportation methods such as sea, air and land transportation to ensure that the steel pipes are delivered on time and safely.

Describe

Steel pipes are vital in both industrial and civil piping systems, made of steel to transport liquids, gases, solids, and other media. They are strong, durable, and resistant to corrosion. Available in types like seamless, welded, galvanized, and stainless steel, each is suited for different uses. These pipes are essential in industries such as petroleum, chemicals, construction, refrigeration, and electricity, playing a key role in modern infrastructure.

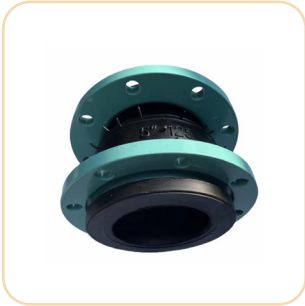
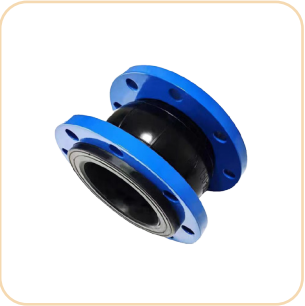
Product Features

- Excellent mechanical properties: Steel pipes are strong, resistant to compression, tension, and bending, able to handle high pressure and tough environments.
- Good corrosion resistance: Galvanized and coated to resist damage in humid or corrosive conditions, extending service life.
- High strength and light weight: Steel pipes are strong yet lighter than concrete and plastic, making them easy to install and transport.
- High and low temperature resistance: Suitable for extreme temperatures and pressure, used for steam, hot water, and frozen liquids.
- Excellent processing performance: Can be cut, bent, welded, and customized to fit various pipeline systems and installation needs.
- Long-term durability: With proper treatment, steel pipes can last a long time in harsh conditions.

Technical parameters

Material	Carbon steel, stainless steel, alloy steel, weathering steel, etc.
Specification	Outer diameter: 6mm ~ 1200mm, wall thickness: 1mm ~ 50mm, can also be customized according to customer requirements
standard	Comply with GB, ASTM, DIN, API, JIS, EN and other domestic and international standards
Surface treatment	Galvanizing, spraying, painting, anti-corrosion coating, etc.
Connection	Welding, threaded connection, flange connection, clamp connection, etc.
Work Pressure	Can be customized according to the working environment and design pressure, suitable for low pressure, medium pressure and high pressure environments
Temperature range	-50°C ~ 450°C (adjusted according to specific steel pipe type and purpose)

Rubber soft connection



Describe

Concentric reducers connect pipes of different diameters, allowing smooth fluid transition. Their aligned pipe ports ensure stable fluid delivery. Widely used in industries like petroleum, chemical, power, and shipbuilding, they are ideal for connecting fluid and gas pipelines.

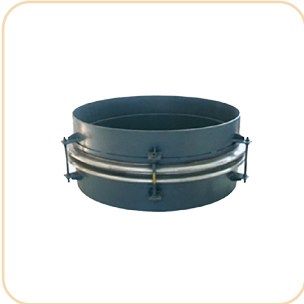
Product Features

- Excellent flexibility: Rubber soft links adapt to pipeline expansion, contraction, and displacement, reducing stress caused by external forces.
- Anti-vibration and noise: Effectively absorbs vibrations and noise, reducing system noise and extending equipment life.
- Corrosion resistance: Made from corrosion-resistant materials, they withstand acids, alkalis, salts, and chemicals, suited for harsh environments.
- High temperature resistance: Performs well under a wide temperature range (-20°C to +150°C), maintaining stability in high-temperature environments.
- Easy installation: Simple design allows for quick installation with bolts, saving time and labor costs.
- Reduce pipeline stress: Compensates for pipeline displacement, reducing stress and minimizing the risk of deformation or rupture.
- Multiple sizes and specifications: Can be customized for different pipeline diameters and pressure levels.

Technical parameters

Material	Rubber (natural rubber, nitrile rubber, fluororubber, EPDM, etc.), metal reinforcement layer (such as steel wire braid layer or steel plate reinforcement layer)
Connection	Flange connection, bolt connection, clamp connection, etc.
Operating temperature range	-20°C ~ +150°C (depending on the type of rubber and the working environment, some high temperature types can withstand temperatures up to +250°C)
Pressure range	PN6 ~ PN25 (higher pressure levels can be customized according to requirements)
Nominal diameter	DN25 ~ DN2000 (can be customized according to customer needs)
Application medium	Water, steam, oil, chemicals, gas, etc.
standard	Comply with ISO, ANSI, DIN, GB, JIS and other standards

Bellows



- Packaging: Corrugated pipes are generally packaged in protective packaging such as wooden boxes and pallets to ensure that the products are not damaged during transportation.
- Transportation: We provide a variety of transportation methods, including sea, air and land transportation, to ensure that the products are delivered on time.

Describe

Bellows are flexible, corrugated pipes made from materials like stainless steel or copper, used in pipelines to absorb deformation from temperature, pressure, and vibration. They are essential for shock resistance, high temperature tolerance, and corrosion resistance, commonly used in industries like petrochemical, power, metallurgy, and shipbuilding.

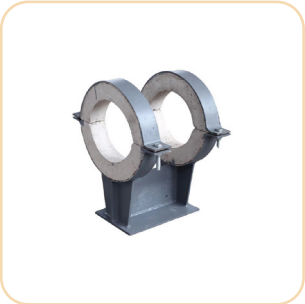
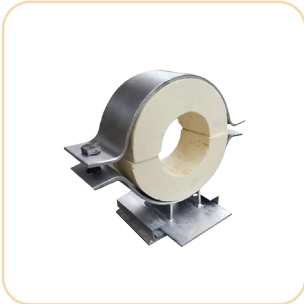
Product Features

- Excellent flexibility and elasticity: The bellows can absorb axial, lateral, and angular displacements, effectively reducing deformation from temperature changes and pressure fluctuations.
- High pressure resistance: Capable of withstanding high pressure without rupture, making them suitable for high-pressure pipeline systems.
- Corrosion resistance: Made from corrosion-resistant materials like stainless steel and alloy steel, ideal for harsh conditions with chemical or acid-base environments.
- High temperature resistance: Stable performance in high-temperature environments, particularly in industries like thermal power, metallurgy, and petroleum.
- Shock absorption and noise reduction: Their elasticity helps absorb vibrations, reducing mechanical noise during pipeline operation.
- Compact structure: The bellows' compact design is perfect for applications that require space-saving and simplified pipeline systems.
- Wear resistance: Constructed with high-strength materials, they offer excellent wear resistance for long-lasting use in demanding environments.

Technical parameters

Material	Stainless steel (304, 316, 316L, etc.), alloy steel, copper alloy, carbon steel, etc.
Specification	DN15 ~ DN1200, customized according to customer needs
Pressure level	Suitable for medium and low pressure (PN6 ~ PN160), high pressure series can also be customized according to needs
Temperature range	-196°C ~ 800°C (temperature range varies depending on material and design)
Wall thickness	Can be customized according to working environment and media type
journey	The stroke of the bellows can be adjusted according to the displacement required to be absorbed
length	The length of the bellows can be customized according to the needs of the installation site
type	Single bellows, double bellows, multi-bellows, etc., suitable for different application environments

Support bracket



Describe

Supports and hangers are essential components used to secure and stabilize pipelines, equipment, and mechanical systems. They help maintain the structure and position of pipelines during operation by supporting their weight, thermal expansion, vibration, and other forces. Commonly made from steel or aluminum alloy, they are used in industries like petroleum, natural gas, chemicals, electricity, metallurgy, and construction. Customizable based on specific needs, they come in various types, specifications, and load-bearing capacities to suit different working conditions.

Product Features

- Strong Load-Bearing Capacity: Supports and hangers effectively bear the weight of pipelines and equipment, ensuring system stability and safety.
- Adjustment Function: Some designs allow for height and position adjustments to accommodate pipeline expansion and contraction.
- Corrosion Resistance: Made from anti-corrosion materials, they are suitable for harsh environments like oceans and chemical plants.
- Wide Applicability: Customizable based on pressure, temperature, and medium characteristics, suitable for various pipeline systems (water, steam, gas).
- Easy Installation: Designed for easy installation and maintenance, reducing installation costs.
- Seismic Resistance: Absorbs vibration, protecting the pipeline and enhancing system stability.
- Flexibility: Available in various designs, adaptable to different pipeline systems and installation environments.

Technical parameters

Material	Carbon steel, stainless steel, aluminum alloy, plastic, etc.
Specification	Provide various specifications of supports and hangers according to the size, weight, type and use requirements of the pipeline
Operating temperature	'-20°C ~ +600°C (depending on the type and material selection)
Work Pressure	According to different needs, the support and hanger can withstand pipeline loads of different pressures.
Carrying capacity	The load-bearing capacity of the supports and hangers can range from tens of kilograms to several tons, and can be customized according to the pipe weight and requirements.
Connection	Flange connection, bolt connection, welding connection, etc.

Compensator



Describe

A compensator is a device that absorbs deformation or displacement in pipelines and equipment caused by temperature changes, pressure, vibration, or settlement. It reduces stress, prevents damage, and ensures stable operation, extending the service life of pipelines. Compensators are used in various industries like thermal engineering, water and gas supply, petrochemicals, and power equipment. They come in different types, such as metal bellows, expansion joints, and rubber compensators, based on the specific needs.

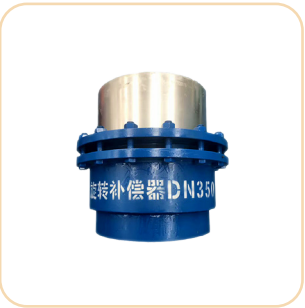
Product Features

- Absorbs Expansion and Contraction: The compensator absorbs pipeline expansion or contraction caused by temperature changes, maintaining system stability and preventing breakage or joint damage.
- Reduces Vibration and Noise: In high temperature and pressure environments, the compensator minimizes mechanical stress from vibration, reducing noise and ensuring smooth system operation.
- Strong Adaptability: Suitable for various pipeline specifications and pressure levels, the compensator effectively handles extreme temperature changes, displacement, and equipment settlement.
- Corrosion and High-Temperature Resistance: Metal compensators are made from materials resistant to corrosion and high temperatures, ideal for industries like petrochemicals, metallurgy, and electricity.
- Simple Structure and Easy Installation: The compensator's simple design allows for easy installation and quick commissioning, reducing the project timeline.
- Long-Term Stability: Designed for longevity, the compensator performs reliably in harsh conditions and minimizes maintenance needs.

Technical parameters

Material	Carbon steel, stainless steel, alloy steel, copper alloy, etc. The specific material is selected according to the use environment and requirements.
Operating temperature	-40° C ~ 800°C (depending on the specific type and material, the applicable temperature range varies)
Work Pressure	Can be designed according to different working pressure requirements, common range is from PN6 to PN160
size	Applicable to DN15 ~ DN3000 (customized according to customer needs)
Connection	Flange connection, threaded connection, welding connection, etc.
type	Axial, lateral, angular compensators, etc.
journey	The stroke of the compensator can be adjusted according to different working conditions such as temperature difference and displacement.

Rotary compensator



- Packaging: According to product specifications and quantity, protective packaging methods such as wooden boxes, bubble films, pallets, etc. are used to ensure safety during transportation.
- Transportation: Provide a variety of transportation methods, including sea, air, land, etc., to ensure that the product can arrive at the customer's designated location on time.

Describe

A rotary compensator, or rotary expansion joint, is used in piping systems to absorb thermal expansion, displacement, or vibration. It compensates for axial displacement caused by temperature changes, pressure fluctuations, or pipe deformation by allowing rotation. Installed at pipe corners or rotating parts, it reduces mechanical stress on pipes and equipment, preventing issues like pipe rupture, leakage, or failure due to excessive stress. Rotary compensators are commonly used in industries such as petroleum, chemical, electric power, steel, and metallurgy.

Product Features

- Rotation Function: The rotary compensator allows the pipeline or equipment to rotate with temperature changes or pressure fluctuations, absorbing displacement and expansion while preventing excessive mechanical stress.
- Compensation Performance: It effectively compensates for axial, lateral, and angular displacement, preventing stress buildup during pipeline expansion or contraction, thus extending equipment lifespan.
- High Temperature and Corrosion Resistance: Made from materials that resist high temperatures and corrosion, it's ideal for harsh environments like steam and chemical medium pipelines.
- Reducing Pipeline Stress: The compensator reduces internal pressure stress by absorbing pipeline displacement, preventing rupture, damage, or failure.
- Simple Structure and Easy Installation: With a straightforward design, it connects directly to pipeline flanges or equipment, simplifying installation and reducing time and costs.
- High Efficiency Performance: It resolves issues from temperature changes, vibration, and displacement, ensuring smooth operation of the entire system.

Technical parameters

Material	Mainly made of corrosion-resistant and high-temperature resistant metal materials such as carbon steel, stainless steel, and alloy steel
Connection	Flange connection, welding connection, etc.
Operating temperature range	-20°C ~ +500° C (wider temperature range available depending on model and material)
Working pressure range	PN6 ~ PN25 (higher pressure range can be customized)
Nominal diameter	DN50 ~ DN2000 (customized according to customer needs)
Compensation	The general compensation amount is 5mm ~ 50mm, which can be customized according to the actual needs of the pipeline.
standard	Comply with ISO, ANSI, DIN, GB, JIS and other international standards
Application medium	Water, steam, oil, chemical media, etc.

Metal hose



Describe

Metal hoses are flexible pipe components made from materials like stainless steel or alloy steel, known for their high temperature, pressure, and corrosion resistance. They consist of multi-layer bellows, braided mesh, and sealing rings. Metal hoses are used in pipelines for connection, compensation, sealing, shock absorption, and protection. Their main function is to absorb displacement and vibration, making them ideal for tough conditions such as high temperature, pressure, and corrosion. They are widely used in industries like petrochemical, steel metallurgy, electric power, aerospace, and automobiles.

Product Features

- Excellent Flexibility and Elasticity: The bellows structure absorbs pipeline expansion, contraction, and vibration due to temperature changes, allowing for axial, lateral, and angular displacements.
- High Temperature Resistance: Metal hoses can withstand extreme temperatures, typically from -196°C to 800°C, making them suitable for both high and low temperature environments.
- Corrosion Resistance: Made from materials like stainless steel and alloy steel, metal hoses resist corrosion from chemicals such as acids, alkalis, and salts, ideal for transporting corrosive gases and liquids.
- Pressure Resistance: They can endure high internal and external pressures, making them perfect for high-pressure applications.
- Shock and Noise Reduction: The elasticity and flexibility of metal hoses help absorb vibrations and reduce mechanical noise, ensuring stable equipment operation.
- Anti-aging and Wear Resistance: They are durable, resistant to aging, and can handle long-term use without deformation or damage.
- Flexible Installation: Due to their excellent bendability, metal hoses are easy to install in confined spaces or complex environments.

Technical parameters

Material	Stainless steel (304, 316, 316L, etc.), alloy steel, copper, aluminum, etc.
Specification	DN6 ~ DN3000, customized according to customer requirements
Pressure level	PN6 ~ PN250, the specific pressure level is selected according to the use requirements
Temperature range	-196°C ~ 800°C (Specific range depends on the selected material and design)
Wall thickness	Usually 0.2mm ~ 1mm, customized according to pressure and temperature requirements
Connection	Flange connection, threaded connection, clamp connection, welding, etc.
Structural form	Single bellows, double bellows, braided mesh enhanced type, etc.

Manhole



Describe

Manholes are openings used for inspecting, maintaining, and cleaning closed containers like pipelines, equipment, storage tanks, and sewage tanks. They are typically fitted with a cover that can be opened and closed. Manholes allow personnel to easily enter for regular maintenance and emergency repairs. They are commonly found in industrial piping systems, sewage treatment plants, chemical plants, power facilities, and oil and gas storage and transportation. Manholes provide strong sealing to prevent external contaminants from entering and ensure that the medium inside doesn't leak, offering safe and reliable access in various working environments.

Product Features

- High-strength material: Made from durable materials like cast iron, stainless steel, and carbon steel to withstand high pressure and impact.
- Good sealing: Designed to be leak-proof, preventing medium leakage and external pollutants from entering.
- Corrosion resistance: Coated or made of stainless steel to resist corrosion, ideal for chemical, sewage, and marine environments.
- High security: Equipped with safety locks and devices to prevent unauthorized access.
- Customizable: Custom designs available to fit different sizes, structures, and materials based on needs.
- Convenient installation and maintenance: Easy to install, reusable, and simplifies inspection and maintenance.
- Compression resistance and durability: Built to handle large static and dynamic loads in tough environments.

Technical parameters

Material	Cast iron, stainless steel, carbon steel, aluminum alloy, etc.
size	DN300 ~ DN2000 (specific size can be customized according to requirements)
Pressure level	PN6 ~ PN250 (customized according to the use environment)
Temperature range	-50°C ~ 200°C (specific range is adjusted according to material and working conditions)
Connection	Flange connection, bolt connection, etc.
Sealing method	Rubber seals, gaskets, etc.
Protection level	Waterproof and dustproof design, meeting IP68 and other protection standards

- Products are packaged using methods like wooden boxes, pallets, and bubble film based on customer needs. Multiple transportation options are available, including sea, air, and land, with on-time delivery according to customer requirements.