



VIRTUOUSBLUE

美容美妆宣传册

Beauty and Cosmetics Brochure

Yutong Makeup leads the trend



Cangzhou Yutong Cosmetic Tools Co., Ltd.

Address: Quanliuzhuang Village, Qingzhou Town, Qing County, Cangzhou City, Hebei Province

Phone: 15713277771



Cangzhou Yutong Cosmetic Tools Co., Ltd.

Cangzhou Yutong Cosmetic Tools Co., Ltd.

Company Information

Cangzhou Yutong Cosmetic Tools Co., Ltd. was founded in 2017 with a registered capital of 3.5 million RMB. Led by our CEO Mr. Peng Shujun, the company is located in Quanliuzhuang Village, Qingzhou Town, Qing County, Cangzhou City, Hebei Province. It covers an area of 1.3 mu (approx. 866.7 m²) with a building area of 1,600 m², and currently employs over 80 people.

Cangzhou Yutong Cosmetic Tools Co., Ltd. is a professional enterprise specializing in the R&D, production, and sales of cosmetic tools. Since its establishment, we have adhered to the business philosophy of "Quality First, Customer Foremost" and are committed to providing high-quality, diverse cosmetic tool products to global beauty consumers and brands.

Integrating design, production, and sales, our product line includes powder puffs, beauty sponges, makeup brushes, eyelash curlers, facial cleansing towels, and more. We strictly control the entire process from raw material procurement to manufacturing, ensuring that every product meets high-quality standards to satisfy the diverse needs of different markets and customers.

We have maintained long-term partnerships with well-known Korean brands such as fillimilli, wakemake, espoir, too cool for school, and CLIO, earning consistent praise from our clients.



USBLUE



XIANHUILAN XILIE

娴蕙兰化妆刷

10支化妆刷套装

精致妆容 细致描绘

DELICATE MAKEUP AND METICULOUS DESCRIPTION



Fine bristles

Even powder pickup

Soft and skin-friendly

Microcrystalline silk fibers

PLENTIFUL, SOFT AND FINE BRISTLES

THE FINE, SOFT BRISTLES FEEL AS GENTLE AS A BREEZE BRUSHING AGAINST THE SKIN.



BLENDS SEAMLESSLY WITH SKIN AND OFFERS EXCELLENT POWDER RETENTION

BLENDS SEAMLESSLY WITHOUT SMUDGING, AND FEELS AS LIGHT AS A FEATHER AGAINST THE SKIN.



SOLID WOOD HANDLE FOR A COMFORTABLE GRIP

WATER-PROOF AND SHAPE-RETAINING, WITH AN EXCEPTIONAL TEXTURE—JUST A GENTLE GRIP FOR A FLAWLESS MAKEUP LOOK.



EXQUISITE ALUMINUM TUBE, THICKENED AND DURABLE

MIRROR FINISH, 0.05MM THICKENED, DURABLE AND COLORFAST



BRUSH TYPE ANALYSIS

01 TONGUE-SHAPED LOOSE POWDER BRUSH



Tongue-shaped brush, easily sets makeup over a large area, saves makeup application time. Dip into loose powder/fixing powder/setting powder, sweep from the cheeks to the surrounding areas to cover the entire face.

02 ANGLED CONTOUR BRUSH



The beveled design adorns the angular contour lines, fits the curvature of the facial outline to enhance face-shaping, and easily creates a three-dimensional contour effect.

03 FLAME-SHAPED BLUSHER BRUSH



Flame-shaped blusher brush: the tip of the brush head makes it easier to pick up an appropriate amount of blusher, and a gentle tap instantly creates a vibrant look on both cheeks.

04 FAN-SHAPED HIGHLIGHTER BRUSH



Facial high fan-shaped light brush, the powder is easy to adhere, does not absorb powder or dump, making the makeup more compliant, natural, and not mask-like.

05 THE FLAME SPREADS SOFTLY BRUSH



The flame-shaped blending brush creates distinct layers for eye shadow, making the makeup more delicate, with colors transitioning naturally at the blended areas.

06 ANGLED NOSE CONTOUR BRUSH



The 30-degree bevel design can precisely contour the nose shadow. Sweep gently from the brow to the tip of the nose to create a three-dimensional small pointed nose.

07 LARGE EYESHADOW BRUSH



A brush head with thick and abundant bristles, used for applying base eyeshadow and blending eyeshadow over a large area of the eye.

08 SMALL EYESHADOW BRUSH



The brush head is flat and small, suitable for applying color to detailed areas of the eyes, small-range blending, and highlighting and coloring the eye bags.

09 FLAT-HEAD CONCEALER BRUSH



It is recommended to use it with concealer, which can cover facial blemishes, red blood streaks, acne marks, spots, etc.

10 ANGLED EYEBROW BRUSH



The delicate and small brush head can precisely outline exquisite eyebrow shapes and natural hair strands.

红韵 10支化妆刷

红韵

红韵系列



② Fan-shaped highlighter brush

Product size: bristle length is approximately 1.7 cm
Total product length: approximately 18.8 cm
Product material: fiber bristles, thickened aluminum tube, manchuhan ash solid wood handle
Product function: used for highlighting and blending on the cheekbones, lower jaw and hair



① Loose powder brush

Product size: bristle length is approximately 5.5 cm
Total product length: approximately 20.5 cm
Product material: fiber bristles, thickened aluminum tube, manchuhan ash solid wood handle
Product function: The loose powder, press of powder, and lightly sweep the entire face



③ Small eyeshadow brush

Product size: The bristle length is approximately 0.9 cm
Total product length: approximately 15.8 cm
Product material: horsehair, thickened aluminum tube, manchuhan ash solid wood handle
Product function: can be used for eye detail blending, and also for drawing lower lash line or eye bags



③ Angled eyebrow brush

Product size: Approximately 1.5 cm in bristle length
Total product length: approximately 15.5 cm
Product material: long hair, thickened aluminum tube, manchuhan ash solid wood handle
Product function: precisely outline eyebrows, allow and reveal hair flow



① Medium-sized eyeshadow brush

Product size: The bristle length is approximately 1.1 cm
The total length of the product is approximately 15.5 cm
Product material: horsehair, thickened aluminum tube, manchuhan ash solid wood handle
Product function: Used for eye makeup, such as pressing and applying eyeshadow color, and blending.



③ Tapered Blending Brush

Product size: bristle length is approximately 0.8 cm
Total product length: approximately 15.8 cm
Product material: horsehair, thickened aluminum tube, manchuhan ash solid wood handle
Product function: The pointed oval brush head design enables the color at the blended area to transition naturally



④ Stippling blush brush

Product size: Approximately bristle length is 2.2 cm
Total product length: approximately 17.8 cm
Product material: Wool blended fiber bristles, thickened aluminum tube, manchuhan ash solid wood handle
Product function: The brush head is loose and soft, making it better for "tong qi" (light) application, "qi" and "dai" or "chili", creating a transparent red color



③ Large eyeshadow brush

Product size: The bristle length is approximately 3.1 cm
Total product length: approximately 19 cm
Product material: horse hair, thickened aluminum tube, manchuhan ash solid wood handle
Product function: used for wide eyeshadow application and eye painting



③ Angled contour brush

Product size: The bristle length is approximately 3.8 cm
Total product length: approximately 23 cm
Product material: fiber bristles, thickened aluminum tube, manchuhan ash solid wood handle
Product function: apply contour powder to create a three-dimensional contour; the brush tip has contour and color



③ Angled nose shadow brush

Product size: The bristle length is approximately 2.8 cm
Total product length: approximately 17 cm
Product material: fiber bristles, thickened aluminum tube, manchuhan ash solid wood handle
Product function: beveled design for precise modification of nose contour shadow



红韵
精选动物毛刷毛
Selected animal hair bristles
/ 动物毛搭配纤维毛,柔软亲肤不扎脸 /
Bristled with animal hair and synthetic fibers,
it's soft and skin-friendly, never irritating the face.



红韵
加厚铝管
Thickened Aluminum Tube



红韵
水曲柳实木刷柄
Ash solid wood brush handle



简雪13支化妆刷

PROFESSIONAL BRUSH

一套搞定精致容颜

01

纳米仿生丝
NANO IMITATION SILK

02

加厚铝管
THICKENED ALUMINUM TUBE

03

实木刷杆
RES IN BRUSH ROD

Fan-shaped loose powder brush
Hair length 50mm Total length 180mm
● It adopts a flat oval tongue-shaped design, which is convenient for picking up powder and applying makeup. The large brush head has abundant bristles, making it suitable for quick full-face makeup application and creating a flawless base makeup.

Fan-shaped angled contour brush
Hair length 38mm Total length 173mm
● The beveled design adorns the angular contour lines, fitting the curvature of the facial outline. It enhances face-shaping and easily creates a three-dimensional contour effect.

Flame-shaped Blush Brush
Hair length 40mm Total length 175mm
● The flame-shaped blusher brush, does the tip of the brush head make it better to pick up an appropriate amount of blusher? Just a light touch, and you can instantly achieve a vibrant makeup look.

Fan-shaped highlighter brush
Hair length 38mm Total length 173mm
● Facial fan-shaped highlighter brush, the powder easily adheres, doesn't absorb or cake, making the makeup more compliant, natural and not looking fake.

Eye highlighter brush
Hair length 17mm Total length 150mm
● Dip some highlighter powder, apply it on the brow bone under the eyebrows, use a brush to blend it naturally and smudge, making the eye makeup have a stronger sense of layering.

Flat-head foundation brush
Hair length 26mm Total length 160mm
● The flat head design fits the face, which can greatly speed up makeup application, reduce the sense of heaviness and brush marks, and the foundation applied with it is translucent and light.

Eyeshadow packing brush
Hair length 13mm Total length 150mm
● A brush head with abundant bristles, used for applying base eyeshadow and blending eyeshadow over a large area of the eye.

Flame-shaped nose shadow brush
Hair length 20mm Total length 155mm
● The flame-shaped design can precisely contour the sides of the nose. Sweep lightly from the brow bone to the tip of the nose to create a three-dimensional, small and pointed nose.

Detail eye bag brush
Hair length 8mm Total length 145mm
● The brush head is flat and small, suitable for applying color to detailed areas of the eyes, small-range blending, and highlighting and coloring the eye bags.

Round smudge brush
Hair length 13mm Total length 150mm
● The flame-shaped blending brush creates distinct layers for eye shadow, making the makeup more exquisite. The colors at the blended areas transition naturally.

eyebrow brush
Hair length 8mm Total length 145mm
● The delicate and small brush head can accurately outline exquisite eyebrow shapes and natural hair strands.

Inner corner highlighting brush
Hair length 9mm Total length 145mm
● A fine-tipped brush can brighten the inner corners of the eyes, which can help widen the eye distance and add a cute and innocent effect to the makeup.

lip brush
Hair length 12mm Total length 149mm
● The tip of the brush outlines the details of the lip makeup. Applying a large area ensures even coloring without crossing the boundaries. Exquisite lips can be outlined with a single stroke.

-聆澜10支-

“刷”脸世界 要有一套

刷出你精致妆容



01
人造细纤维刷毛
Artificial microfiber bristles

02
实木手柄烫金logo
Solid wood handle with gold-stamped logo

03
加厚哑光铝管
Thickened matte aluminum tube

04
如春风拂面
刷毛柔软
Like the spring breeze caressing the face
The brush bristles are soft



01 loose powder brush
Dip some setting powder and apply it to the face in a circular motion or by pressing evenly from the middle to both sides.



Long hair 50mm Chief of General Staff 180mm

02 Blush brush
Dip some blusher powder, shake it gently, and then brush it on both cheeks.



Long hair 35mm Chief of General Staff 160mm

03 Foundation brush
Apply an appropriate amount of foundation to the face and spread it evenly from front to back.



Long hair 25mm Chief of General Staff 145mm

04 Fan-shaped highlighter brush
Dip into the highlighter powder and gently sweep it over the cheekbones, chin, and brow bones to brighten the highlight.



Long hair 28mm Chief of General Staff 160mm

05 concealer brush
Dip concealer and apply it with a brush to blemished areas such as dark circles, acne, acne marks, and spots.



Long hair 10mm Chief of General Staff 150mm

06 Round smudge brush
Blend the triangular area at the outer corner of the transition eyelid to make the eye color transition naturally.




Long hair 10mm Chief of General Staff 150mm

07 Eyeliner-Eyebrow Brush
As an eyeliner brush: Dip into the eyeliner cream and outline from the inner corner to the outer corner of the eye in one stroke to form the shape.
As an eyebrow brush: Dip into the eyebrow cream or eyebrow powder, use the beveled edge to draw the outline, and use the flat edge to fill in and blend.



Long hair 12mm Chief of General Staff 147mm

08 Large eyeshadow brush
Dip into the base eyeshadow color and blend it extensively over the eyelid.



Long hair 14mm Chief of General Staff 155mm

09 nose shadow brush
Dip in contour powder to enhance the three-dimensional effect of the nose, and it can also be used for eye smudging.



Long hair 15mm Chief of General Staff 155mm

10 Lower eyelid brush
Dip a dark eyeshadow and smudge it from the back to the front on the lower eyelid to create a gradient eye look.



Long hair 7mm Chief of General Staff 148mm

媚后

媚后10支化妆刷

媚后系列



精选巴斯夫刷毛
Selected BASF brush bristles
柔软亲肤不扎脸 媲美自然
Soft and skin-friendly, not irritating to the face
Natural smudging



加厚铝管
Thickened aluminum tube



桦木实木刷柄
Birch solid wood brush handle
个性·小蛮腰·镂空
Personality / Slender waist / design

Product size: Approximate bristle length is 32mm
Total product length: Approximately 212mm
Product material: Fiber bristles, thickened aluminum tube, solid wood small waist handle
Product function: Apply contour powder, or use as a three-dimensional contour, with an oblique angle that fits the contour



① Fan-shaped highlighter brush

Product size: The bristle length is approximately 57 mm
Total product length: Approximately 215 mm
Product material: Fiber bristles, thickened aluminum tube, birch solid wood small waist handle
Product function: Apply loose powder and sweep lightly over the entire face



② Tongue-shaped loose powder brush

Product size: bristle length is approximately 30mm
Total product length: approximately 172mm
Product material: Birch bristles, thickened aluminum tube, solid wood small waist handle
Product function: Used for defining the back end of the eye lid and creating subtle eye makeup



⑥ Small eyeshadow brush

Product size: Approximately 23mm bristle length
Total product length: approximately 171mm
Product material: Fiber bristles, thickened aluminum tube, birch solid wood small waist handle
Product function: Used for basic eyeshadow application and eye-to-eye blending



⑦ Large eyeshadow brush

Product size: bristle length is approximately 7mm
Total product length: approximately 155mm
Product material: Birch bristles, thickened aluminum tube, birch solid wood small waist handle
Product function: Used for applying facial foundation and concealing skin marks and spots



④ Concealer and foundation brush

Product size: The bristle length is approximately 47mm
Total product length: approximately 203mm
Product material: Fiber bristles, thickened aluminum tube, birch solid wood small waist handle
Product function: The top of the brush can have pick up powder, creating a translucent red color



③ Flame-shaped blusher brush

Product size: bristle length is approximately 30mm
Total product length: approximately 159mm
Product material: Fiber bristles, thickened aluminum tube, birch solid wood small waist handle
Product function: Used for eye makeup detail or deepening and blending at the inner and outer



⑧ Detail brush

Product size: bristle length is approximately 7mm
Total product length: approximately 162mm
Product material: Fiber bristles, thickened aluminum tube, birch solid wood small waist handle
Product function: Used for highlighting and shading the under-eye bags, and can also be used for creating low or high line



⑨ Angled eye bag brush

Product size: bristle length is approximately 15mm
Total product length: approximately 150mm
Product material: Fiber bristles, thickened aluminum tube, solid wood small waist handle
Product function: Beveled design for precise and fixation of nose contour shadow



⑤ Angled nose contour brush

Product size: The bristle length is approximately 22 mm
Total product length: approximately 155 mm
Product material: Birch bristles, thickened aluminum tube, birch solid wood small waist handle
Product function: For make a shadow of eyeshadow blending, and can also be used as a highlighter brush



⑥ Flame blur and spread (a color) brush

MOCHA HUAZHUANGSHUA 墨茶9支化妆套刷

温柔不飞粉 轻松自然晕染
Gentle, does not fly powder, easy and natural blending



NEW / FASHION



1# Fragrance Setting Powder Brush



Bristle length: approx. 52 mm Total length: approx. 178 mm

Sets makeup evenly, suitable for applying loose powder and finishing powder

2# Flame Blush Brush



Bristle length: approx. 48 mm Total length: approx. 163 mm

Applies blush and bronzer for a natural flush

3# Fan Highlighter Brush



Bristle length: approx. 30 mm Total length: approx. 149 mm

Highlights cheekbones, brow bones, and other facial features

4# Angled Nose Contour Brush



Bristle length: approx. 18 mm Total length: approx. 144 mm

Picks up contour powder to enhance facial definition, also suitable for applying local highlighter

5# Large Eyeshadow Brush



Bristle length: approx. 13 mm Total length: approx. 138 mm

Excellent at picking up eyeshadow for large-area blending on the eyelid

6# Flat Concealer Brush



Bristle length: approx. 13 mm Total length: approx. 136 mm

Picks up concealer to cover blemishes like dark circles, pimples, acne marks, and spots

7# Rounded Blending Brush



Bristle length: approx. 10 mm Total length: approx. 136 mm

Blends eyeshadow seamlessly on the eyelid, outer corner, and crease areas for a natural transition

8# Small Eyeshadow Brush



Bristle length: approx. 7 mm Total length: approx. 134 mm

Ideal for precise blending and detailed eye makeup application

9# Angled Brow Brush



Bristle length: approx. 8 mm Total length: approx. 134 mm

Picks up brow cream or powder; use the angled edge to define brow shape and the flat edge to fill and blend. Also works as an eyeliner brush

MOCHA HUAZHUANGSHUA 墨绿9支化妆套刷

温柔不飞粉 轻松自然晕染

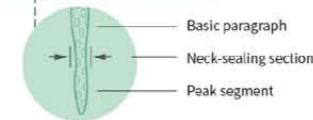


NEW FASHION



1. Bristles

Made of imported fiber hair
Soft and skin-friendly
Applies makeup evenly and naturally
No irritation to the face



Basic paragraph
Neck-sealing section
Peak segment



2. Pipe Brushing

Gold matte aluminum tube
Thickened by 0.5MM
Durable and non-deformable
Corrosion-resistant



3. Brush Handle

Made of solid birch wood
Has a substantial weight and good texture
Comfortable to hold

INTRODUCTION OF BRUSH TYPE

刷型介绍

Curated Set of 9 Essential Brush Types

舌形散粉刷
Fragrance Setting Powder Brush

火苗腮红刷
Flame Blush Brush

扇形高光刷
Fan highlighter Brush

斜角鼻影刷
Angled Nose Contour Brush

大号眼影刷
Large Eyeshadow Brush

扁平遮瑕刷
Flat Concealer Brush

圆头晕染刷
Rounded Blending Brush

小号眼影刷
Small Eyeshadow Brush

斜头眉粉刷
Angled Brow Brush

1# Fragrance Setting Powder Brush



Bristle length: approx. 52mm Total length: approx. 178mm

Sets makeup evenly, suitable for applying loose powder and finishing powder

2# Flame Blush Brush



Bristle length: approx. 48mm Total length: approx. 163mm

Applies blush and bronzer for a natural flush

3# Fan Highlighter Brush



Bristle length: approx. 30mm Total length: approx. 149mm

Highlights cheekbones, brow bones, and other facial features

4# Angled Nose Contour Brush



Bristle length: approx. 18mm Total length: approx. 144mm

Picks up contour powder to enhance facial definition, also suitable for applying local highlighter

5# Large Eyeshadow Brush



Bristle length: approx. 13mm Total length: approx. 138mm

Excellent at picking up eyeshadow for large-area blending on the eyelid

6# Flat Concealer Brush



Bristle length: approx. 13mm Total length: approx. 138mm

Picks up concealer to cover blemishes like dark circles, pimples, acne marks, and spots

7# Rounded Blending Brush



Bristle length: approx. 11mm Total length: approx. 136mm

Blends eyeshadow seamlessly on the eyelid, outer corner, and crease areas for a natural transition

8# Small Eyeshadow Brush



Bristle length: approx. 7mm Total length: approx. 134mm

Ideal for precise blending and detailed eye makeup application

9#



Bristle length: approx. 8mm Total length: approx. 134mm

Picks up brow cream or powder; use the angled edge to define brow shape and the flat edge to fill and blend. Also works as an eyeliner brush

上色晕染「凸」显层次

XINGYAO YANBUSHUA

星耀系列5支眼部化妆刷



01

人造细纤维
Man-made microfibers

02

加厚铝制管口
Thickened aluminum nozzle

03

实木烤漆刷柄
Solid wood baking varnish brush handle

1# Large Eyeshadow Brush



Bristle length: approx. 14 mm Total length: approx. 170 mm



Ultra-soft, dense bristles for applying base eyeshadow and blending large areas of color.

2# Small Eyeshadow Brush



Bristle length: approx. 12 mm Total length: approx. 167 mm



A compact, precise brush for adding depth to the outer corner of the eye.

3# Rounded Blending Brush



Bristle length: approx. 10 mm Total length: approx. 165 mm



Perfect for seamless blending in the eye crease and along the lash line for a smooth finish.

4# Eye Detail Brush



Bristle length: approx. 9 mm Total length: approx. 162 mm



Ideal for precise blending along the lash line and adding detail to the inner corner of the eye.

5# Flame Brush



Bristle length: approx. 7 mm Total length: approx. 172 mm



Unique flame-shaped bristles for applying highlighter to the brow bone and blending eyeshadow for a diffused, smoky effect.

星耀系列三色可选

THREE COLORS ARE AVAILABLE



Blue · Deep & Elegant

Blue symbolizes hope. In legend, the eyes of the Greek goddess Hera were blue, making it the color of hope.



Grey · Calm & Serene

Grey is a neutral, understated hue that evokes a sense of peace and stability, making it a timeless choice.



Burgundy · Luxe & Sophisticated

A rich blend of red and black, burgundy exudes luxury and authority, representing timeless elegance.

12支装化妆刷

幽澜系列套刷

YOULANXILIEHUAZHUANGSHUA

01

小马毛+纤维毛
Pony Hair + Synthetic Fibers

02

加厚铝管
Thickened Aluminum Ferrule

03

清漆刷杆
Clear Lacquered Wooden Handle

Powder Brush



Bristle length: approx. 55 mm Total length: approx. 170 mm

- The fluffy, dome-shaped head picks up powder evenly for a smooth, full-face application.

Contour Brush



Bristle length: approx. 35 mm Total length: approx. 142 mm

- Angled design follows the face's natural contours, perfect for sculpting and defining the jawline and cheekbones.

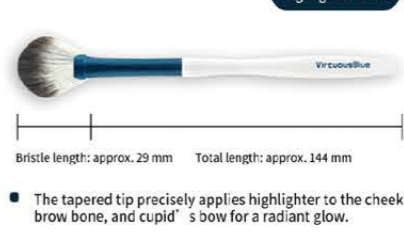
Blush Brush



Bristle length: approx. 36 mm Total length: approx. 145 mm

- Soft, dense bristles deliver a flush of color that blends seamlessly into the skin.

Highlighter Brush



Bristle length: approx. 29 mm Total length: approx. 144 mm

- The tapered tip precisely applies highlighter to the cheekbones, brow bone, and cupid's bow for a radiant glow.

Nose Contour Brush



Bristle length: approx. 11 mm Total length: approx. 139 mm

- 3D angled tip for precise contouring along the sides of the nose to enhance definition.

Foundation Brush



Bristle length: approx. 28 mm Total length: approx. 136 mm

- Dense, flat bristles blend liquid or cream foundation evenly for a flawless, airbrushed finish.

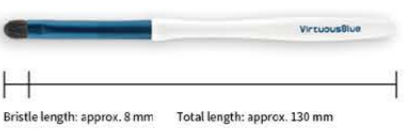
Eyeshadow Brush



Bristle length: approx. 12 mm Total length: approx. 133 mm

- Soft, fluffy bristles pick up and blend eyeshadow evenly across the eyelid.

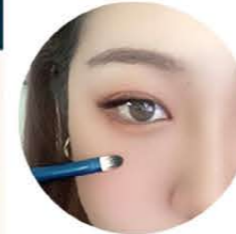
Detail Brush



Bristle length: approx. 8 mm Total length: approx. 130 mm

- Small, precise tip for detailed work, such as blending in the eye crease or adding color to the inner corner.

Flat Concealer Brush



Bristle length: approx. 13 mm Total length: approx. 134 mm

- Flat, dense bristles for applying and blending concealer to cover dark circles, blemishes, and redness.

Flame Blending Brush



Bristle length: approx. 12 mm Total length: approx. 139 mm

- Unique flame shape for seamless blending and creating gradient eyeshadow effects.

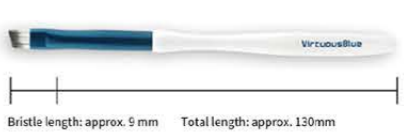
Lip Brush



Bristle length: approx. 12 mm Total length: approx. 133 mm

- Precise, pointed tip for applying lipstick or lip liner with sharp, clean lines.

Eyeliner Brush



Bristle length: approx. 9 mm Total length: approx. 130 mm

- Ultra-fine, angled tip for creating precise eyeliner looks, from thin lines to bold wings.

12支装化妆刷

幽雅系列套刷

YOUYANGXILIEHUAZHUANGSHUA

01

小马毛+纤维毛
Pony Hair + Synthetic Fibers

02

加厚铝管
Thickened Aluminum Ferrule

03

清漆刷杆
Clear Lacquered Wooden Handle

#01 舌型散粉刷

TONGUE LOOSE PAINT 舌型刷型 快速定妆

Bristle length: approx. 5.5 cm



Total length: approx. 17 cm

The tongue-shaped, large brush head allows quick setting, saving time. It picks up loose powder/setting powder/pressed powder evenly and diffuses it outward from the center for full-face coverage.

#02 斜角修容刷

OBLIQUE PROFILE BRUSH 斜角轮廓 精致收骨

Bristle length: approx. 3.5 cm



Total length: approx. 14.2 cm

The angled design follows the natural contours of your face, making it easy to sculpt and define your features for a three-dimensional look.

#03 火苗腮红刷

SLOPE FOUNDATION 火苗刷头 元气双颊

Bristle length: approx. 3.6 cm



Total length: approx. 14.6 cm

The flame-shaped head picks up the perfect amount of blush. A light sweep delivers a fresh, natural flush of color.

#04 扇形高光刷

FLAME HIGHLIGHT BRUSH 扇形刷型 自然服帖

Bristle length: approx. 2.9 cm



Total length: approx. 14.4 cm

This soft, fan-shaped brush picks up highlighter evenly for a sheer, natural glow that never looks patchy or cakey.

#05 斜头鼻影刷

ROUND EMOLOGING BRUSH 斜扫鼻影 自然过渡

Bristle length: approx. 1.1 cm



Total length: approx. 13.9 cm

The 30° angled tip precisely sculpts the sides of your nose, creating subtle shadows to enhance definition and a more prominent bridge.

#06 大号眼影刷

FLAME HIGHLIGHT BRUSH 均匀上色 妆效自然

Bristle length: approx. 1.6 cm



Total length: approx. 13.7 cm

The soft, fluffy bristles are ideal for applying base eye shadow and blending color across the entire eyelid.

#07 中号眼影刷

EYE COLOR BRUSH 柔软细腻 晕染自然

Bristle length: approx. 1.2 cm



Total length: approx. 13.3 cm

Soft, dense bristles pick up eyeshadow evenly and blend it smoothly for a seamless, diffused finish.

#08 小号眼影刷

EYE SHADOW BRUSH 扁小刷头 细节铺色

Bristle length: approx. 0.8 cm



Total length: approx. 13 cm

The compact, precise tip is perfect for detailed blending in small areas, such as the eye crease or inner corner.

#09 扁头遮瑕刷

SMALL SMUDGE BRUSH 一支多用 轻柔无痕

Bristle length: approx. 1.3 cm



Total length: approx. 13.4 cm

Designed to work with liquid or cream concealers, this brush precisely covers dark circles, blemishes, redness, and spots.

#10 火苗晕染刷

CONCEALER BRUSH 斜扫晕染 自然过渡

Bristle length: approx. 1.2 cm



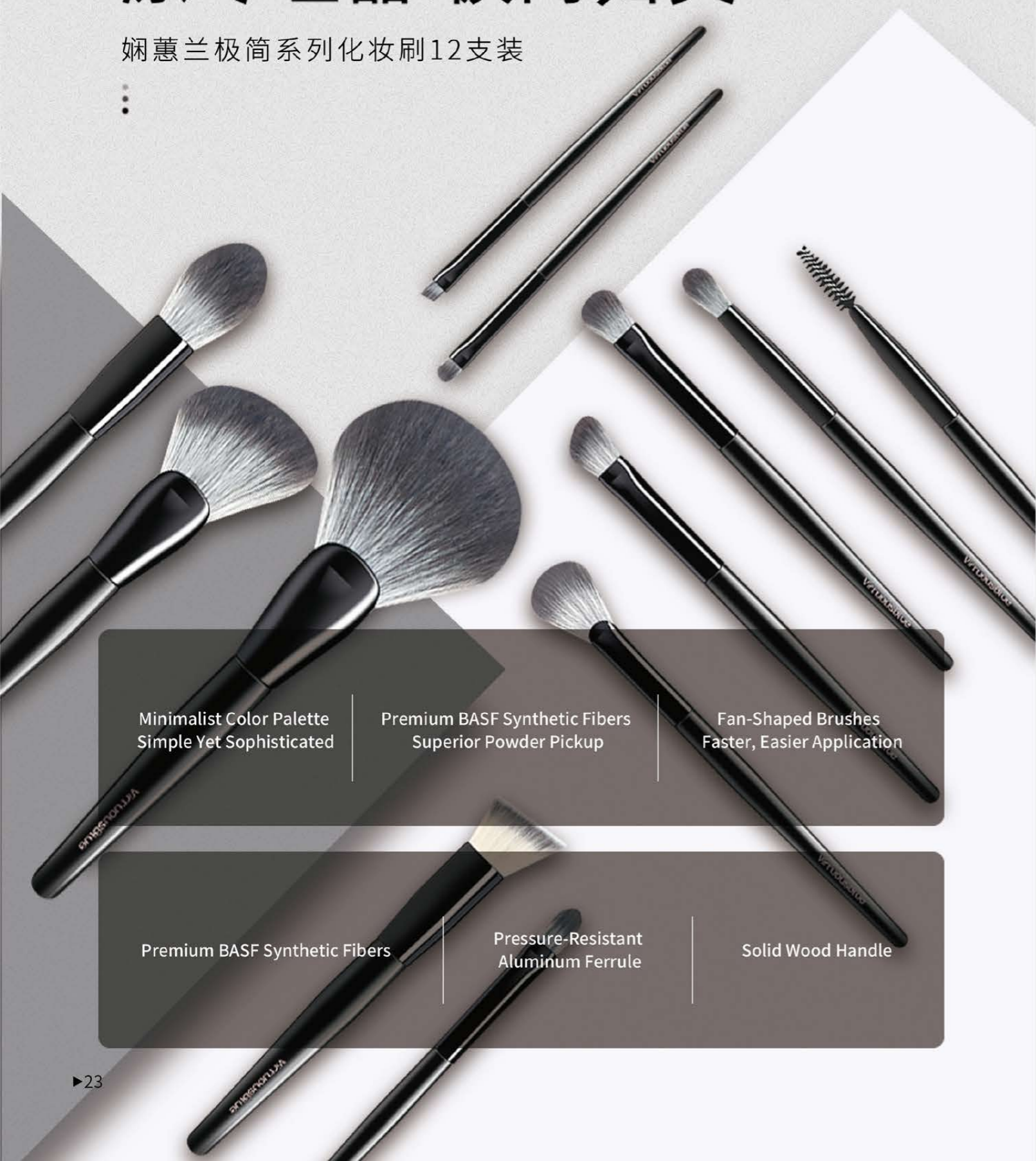
Total length: approx. 13.9 cm

The flame-shaped head blends eyeshadow seamlessly, creating smooth transitions and a more polished, professional eye look.

Original design

涤尽喧嚣 极简归真

娴蕙兰极简系列化妆刷12支装



Minimalist Color Palette
Simple Yet Sophisticated

Premium BASF Synthetic Fibers
Superior Powder Pickup

Fan-Shaped Brushes
Faster, Easier Application

Premium BASF Synthetic Fibers

Pressure-Resistant
Aluminum Ferrule

Solid Wood Handle

#01 Fan-Shaped Loose Powder Brush

XIANHUILAN BRUSH



Bristle length: approx. 5.8 cm Total length: approx. 18.5 cm

Picks up loose/setting/pressed powder evenly and applies it smoothly across the entire face for a flawless finish.

#02 Fan-Shaped Contour Brush

XIANHUILAN BRUSH



Bristle length: approx. 4 cm Total length: approx. 16.4 cm

The angled design follows your facial contours to create precise, sculpted definition and a three-dimensional look.

#03 Round Blush Brush

XIANHUILAN BRUSH



Bristle length: approx. 3.8 cm Total length: approx. 16.8 cm

The flame-shaped head picks up the perfect amount of blush for a natural, radiant flush that blends seamlessly.

#04 Angled Foundation Brush

XIANHUILAN BRUSH



Bristle length: approx. 2.3 cm Total length: approx. 15.3 cm

The angled head fits perfectly against the face, blending liquid or cream foundation evenly for a smooth, airbrushed base.

#05 Fan-Shaped Highlighter Brush

XIANHUILAN BRUSH



Bristle length: approx. 2.7 cm Total length: approx. 16.3 cm

The soft, fan-shaped tip applies highlighter gently to the cheekbones, brow bone, and cupid's bow for a natural, luminous glow.

#06 Angled Nose Contour Brush

XIANHUILAN BRUSH



Bristle length: approx. 1.7 cm Total length: approx. 16.3 cm

A 30° angled tip for precise contouring along the sides of the nose, creating subtle shadows to enhance definition.

#07 Rounded Blending Brush

XIANHUILAN BRUSH



Bristle length: approx. 1.7 cm Total length: approx. 16.3 cm

The flame-shaped head blends eyeshadow seamlessly in the crease and along the lash line for a smooth, diffused effect.

#08 Flat Concealer Brush

XIANHUILAN BRUSH



Bristle length: approx. 1.5 cm Total length: approx. 16 cm

Dense, flat bristles for precise application of liquid or cream concealer to cover dark circles, blemishes, redness, and spots.

#09 Large Eyeshadow Brush

XIANHUILAN BRUSH



Bristle length: approx. 1.5 cm Total length: approx. 16 cm

Soft, fluffy bristles are ideal for applying base eyeshadow and blending color across the entire eyelid.

#10 Small Eyeshadow Brush

XIANHUILAN BRUSH



Bristle length: approx. 0.9 cm Total length: approx. 15.5 cm

The compact, precise tip is perfect for detailed blending in small areas, such as the eye crease or inner corner.

#11 Angled Brow Brush

XIANHUILAN BRUSH



Bristle length: approx. 0.9 cm Total length: approx. 15.5 cm

A small, angled brush for precise brow grooming. Fills in sparse areas and defines the brow shape with cream or powder.

#12 Spiral Lash Brush

XIANHUILAN BRUSH



Bristle length: approx. 2.5 cm Total length: approx. 17 cm

The spiral design combs through lashes and brows to separate clumps, remove excess mascara, and create a natural, fluffy look.





Ebony Wood Handle with Natural Grain
乌木手柄
原生态花枝

Ebony Wood Handle with Natural Grain is made from the natural grain of ebony wood, which is known for its durability and resistance to moisture. It is a perfect choice for those who value natural materials and a classic aesthetic.

Pure Copper Rose Gold Ferrule - Durable & Long-lasting
纯铜玫瑰金
耐磨耐用

Pure Copper Rose Gold Ferrule is made from high-quality copper and rose gold, providing a durable and long-lasting finish. It is a perfect choice for those who value quality and a classic aesthetic.



**动物毛自然
精梳细选**

Animal hair brushes are hand-picked from the best quality animals, ensuring a soft and natural texture. They are perfect for those who value natural materials and a classic aesthetic.



6 Fan Highlighter Brush
Product Size: Bristle length approx. 30 mm / Diameter approx. 21 mm / Total length approx. 131 mm
Material: Snow Fox Hair + Pure Copper Ferrule + Solid Ebony Wood Handle
Function: Applies highlighter to the T-zone and bridge of the nose



5 Powder Finishing & Highlighting Brush
Product Size: Bristle length approx. 23 mm / Diameter approx. 37 mm / Total length approx. 80 mm
Material: Snow Fox Hair + Pure Copper Ferrule + Solid Ebony Wood Handle
Function: Applies powder evenly and applies targeted highlighting



4 Blush Brush
Product Size: Bristle length approx. 45 mm / Diameter approx. 30 mm / Total length approx. 120 mm
Material: Squirrel Hair mixed with Extra-soft Goat Hair + Pure Copper Ferrule + Solid Ebony Wood Handle
Function: Multi-purpose brush for applying blush, contour, or highlighter



3 Contour Brush
Product Size: Bristle length approx. 35 mm / Diameter approx. 40 mm / Total length approx. 92 mm
Material: Squirrel Hair + Pure Copper Ferrule + Solid Ebony Wood Handle
Function: Applies contour and shadow to sculpt and define the Cheekbones



2 Shaded Lace Powder Brush
Product Size: Bristle length approx. 24 mm / Diameter approx. 44 mm / Total length approx. 214 mm
Material: Squirrel Hair + Pure Copper Ferrule + Solid Ebony Wood Handle
Function: Applies loose powder or setting powder evenly across the face



1 Fan Powder Brush
Product Size: Bristle length approx. 50 mm / Diameter approx. 53 mm / Total length approx. 210 mm
Material: Squirrel Hair + Pure Copper Ferrule + Solid Ebony Wood Handle
Function: Brushes away excess powder after application for a flawless finish



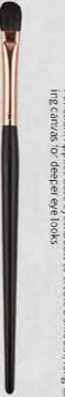
12 Under-Eye Blending Brush
Product Size: Bristle length approx. 7 mm / Diameter approx. 6 mm / Total length approx. 160 mm
Material: Snow Fox Hair + Pure Copper Ferrule + Solid Ebony Wood Handle
Function: Softly blends color to the lower lash line and outer corner, can also be used to smudge eyeliner



11 Small Eyeshadow Brush
Product Size: Bristle length approx. 9 mm / Diameter approx. 8 mm / Total length approx. 164 mm
Material: Squirrel Hair mixed with Extra-soft Goat Hair + Pure Copper Ferrule + Solid Ebony Wood Handle
Function: For precise blending and blending in small areas of the eye



10 Eyeshadow Brush
Product Size: Bristle length approx. 12 mm / Diameter approx. 10 mm / Total length approx. 171 mm
Material: Squirrel Hair mixed with Extra-soft Goat Hair + Pure Copper Ferrule + Solid Ebony Wood Handle
Function: Presses and applies base and light eyeshadows shades evenly



9 Eyeshadow Base Brush
Product Size: Bristle length approx. 14 mm / Diameter approx. 10 mm / Total length approx. 172 mm
Material: Squirrel Hair + Pure Copper Ferrule + Solid Ebony Wood Handle
Function: Applies base eyeshadow to create a smooth, long-lasting canvas or "desper" eye looks



8 Nose Contour Brush
Product Size: Bristle length approx. 15 mm / Diameter approx. 10 mm / Total length approx. 175 mm
Material: Squirrel Hair mixed with Extra-soft Goat Hair + Pure Copper Ferrule + Solid Ebony Wood Handle
Function: Applies and blends nose contour or dark eyeshadow shades



7 Blending Brush
Product Size: Bristle length approx. 22 mm / Diameter approx. 12 mm / Total length approx. 181 mm
Material: Squirrel Hair + Pure Copper Ferrule + Solid Ebony Wood Handle
Function: Blends eyeshadow seamlessly into the eyelid crease



18 Eye-Liner Brush
Product Size: Bristle length approx. 10 mm / Diameter approx. 2 mm / Total length approx. 169 mm
Material: Squirrel Hair + Pure Copper Ferrule + Solid Ebony Wood Handle
Function: Applies eye shadow powder to create precise eyeliner looks



17 Lip Brush
Product Size: Bristle length approx. 11 mm / Diameter approx. 6 mm / Total length approx. 170 mm
Material: Squirrel Hair + Pure Copper Ferrule + Solid Ebony Wood Handle
Function: The pointed tip defines lip contour, while the flat side applies lipstick or gloss evenly



16 Traced Blending Brush
Product Size: Bristle length approx. 9 mm / Diameter approx. 5 mm / Total length approx. 170 mm
Material: Snow Fox Hair + Pure Copper Ferrule + Solid Ebony Wood Handle
Function: Blends dark eyeshadow into the deep crease of the eye or defines the tip of the nose



14 Concealer Brush
Product Size: Bristle length approx. 14 mm / Diameter approx. 10 mm / Total length approx. 175 mm
Material: Snow Fox Hair + Pure Copper Ferrule + Solid Ebony Wood Handle
Function: Presses concealer to cover blemishes, spots, and dark circles with light coverage



13 Brow Brush
Product Size: Bristle length approx. 8 mm / Diameter approx. 8 mm / Total length approx. 163 mm
Material: Snow Fox Hair + Pure Copper Ferrule + Solid Ebony Wood Handle
Function: Applies and shapes brow powder or pomade for defined eyebrows



墨玉
18支

举手投足间，流露出端然与雅致，
一颦一笑间，自有一份似水的温润。



眼部
眼部化妆刷

眼影系列



眼影
纯铜口管

Pure Copper Ferrule

眼影
精选松鼠毛刷毛

Premium Squirrel Hair Bristles
Ultra soft, dense, and gentle on the eye area, ensuring smooth color pickup and blending.



眼影
花梨木实木刷柄

Solid Rosewood Handle



Wanru Shaped Eyeshadow Brush
Bristle length: 20 mm
Total length: 180 mm
Materials: Squirrel Hair & Solid Rosewood



Detail Eyeshadow Brush
Bristle length: 4 mm
Total length: 164 mm
Materials: Squirrel Hair & Solid Rosewood



Finger-Tip Eyeshadow Brush
Bristle length: 9 mm
Total length: 169 mm
Materials: Squirrel Hair & Solid Rosewood



Large Eyeshadow Brush
Bristle length: 17 mm
Total length: 177 mm
Materials: Squirrel Hair & Solid Rosewood



Under-Eye (Silkworm) Eyeshadow Brush
Bristle length: 6 mm
Total length: 166 mm
Materials: Squirrel Hair & Solid Rosewood



Medium Eyeshadow Brush
Bristle length: 14 mm
Total length: 174 mm
Materials: Squirrel Hair & Solid Rosewood



Tongue-Shaped Eyeshadow Brush
Bristle length: 8 mm
Total length: 165 mm
Materials: Squirrel Hair & Solid Rosewood



Small Eyeshadow Brush
Bristle length: 13 mm
Total length: 173 mm
Materials: Squirrel Hair & Solid Rosewood

晕染系列 过渡晕染刷

晕染系列



01

Premium Squirrel Hair Bristles

The brush head is full, fluffy, ultra-soft, and gentle on skin, causing no irritation.

02

Pure Copper Ferrule

03

Solid Rosewood Handle

Large Tapered Blending Brush
Materials: Squirrel Hair & Solid Rosewood
Bristle length: 13 mm
Total length: 173 mm



Small Tapered Blending Brush
Materials: Squirrel Hair & Solid Rosewood
Bristle length: 7 mm
Total length: 166 mm



Medium Tapered Blending Brush
Materials: Squirrel Hair & Solid Rosewood
Bristle length: 10 mm
Total length: 170 mm



Large Flame Blending Brush
Materials: Squirrel Hair & Solid Rosewood
Bristle length: 22 mm
Total length: 184 mm



Small Flame Blending Brush
Materials: Squirrel Hair & Solid Rosewood
Bristle length: 20 mm
Total length: 180 mm



Rounded Blending Brush
Materials: Squirrel Hair & Solid Rosewood
Bristle length: 19 mm
Total length: 180 mm



松鼠毛

松鼠毛11支化妆刷

松鼠毛系列



01
Premium Squirrel
Hair Bristles
Ultra-soft, dense, and gentle on skin,
causing no irritation.

02
Thickened Copper Ferrule

03
Solid Ebony Wood Handle

东方美人刷 Oriental Beauty Brush

柔滑细腻好吸收，气色自然更水润。
Cools down the garments, flows away the face,
brings across the oil, where dry zones with good.



Product Size: Bristle length approx. 33 mm / Total length approx. 125 mm
Material: Squirrel Hair + Thickened Copper Ferrule + Solid Ebony Wood Handle
Function: Creates the all-influors angled shape helps facial contours for precise application



3. Anglet Contour Brush
Product Size: Bristle length approx. 47 mm / Total length approx. 137 mm
Material: Squirrel Hair + Thickened Copper Ferrule + Solid Ebony Wood Handle
Function: Applies soft in circular motions for a sheer, natural flush on the cheeks



2. Blush Brush
Product Size: Bristle length approx. 47 mm / Total length approx. 137 mm
Material: Squirrel Hair + Thickened Copper Ferrule + Solid Ebony Wood Handle
Function: Picks up loose powder, setting powder and applies evenly across the entire face



Product Size: Bristle length approx. 40 mm / Total length approx. 120 mm
Material: Squirrel Hair + Thickened Copper Ferrule + Solid Ebony Wood Handle
Function: Flare-shaped head for seamless blending and soft transitions between eyeshadow shades



7. Flare Blending Brush
Product Size: Bristle length approx. 20 mm / Total length approx. 80 mm
Material: Squirrel Hair + Thickened Copper Ferrule + Solid Ebony Wood Handle
Function: Applies and blends base eyeshadow evenly across the eyelid



6. Eyeshadow Base Brush
Product Size: Bristle length approx. 14 mm / Total length approx. 54 mm
Material: Squirrel Hair + Thickened Copper Ferrule + Solid Ebony Wood Handle
Function: Defines the shape of a finger tip for precise nose contouring to create a refined nose bridge



5. Finger-Tip Nose Contour Brush
Product Size: Bristle length approx. 21 mm / Total length approx. 81 mm
Material: Squirrel Hair + Thickened Copper Ferrule + Solid Ebony Wood Handle
Function: Applies highlighter concentrated for all features and create dimension



Product Size: Bristle length approx. 7 mm / Total length approx. 127 mm
Material: Squirrel Hair + Thickened Copper Ferrule + Solid Ebony Wood Handle
Function: Small tapered tip for precise blending of accent shades in targeted areas



11. Tapered Blending Brush
Product Size: Bristle length approx. 8 mm / Total length approx. 126 mm
Material: Squirrel Hair + Thickened Copper Ferrule + Solid Ebony Wood Handle
Function: Small tapered tip for precise blending of eye shadow shades for detail and definition



10. Small Eyeshadow Brush
Product Size: Bristle length approx. 15 mm / Total length approx. 122 mm
Material: Squirrel Hair + Thickened Copper Ferrule + Solid Ebony Wood Handle
Function: Precision tip for applying and blending mid-tone eyeshadow shades



9. Medium Eyeshadow Brush
Product Size: Bristle length approx. 15 mm / Total length approx. 122 mm
Material: Squirrel Hair + Thickened Copper Ferrule + Solid Ebony Wood Handle
Function: Precision tip for applying and blending mid-tone eyeshadow shades



【Brush Set Collections】



Colorful Brush Set



Transparent Injection Handle Brush Set



Mini Brush Set



【Brush Set Collections】



【Foundation Brush Series】



【Foundation Brush Series】



【Silicone Brush Series】

